

Converting Colors

XYZ(32.3536, 32.2057, 23.9131)

Have a look what the booklet for
XYZ(32.3536, 32.2057, 23.9131)
contains.

XYZ(32.3536, 32.2057, 23.9131)	3
<i>Conversions</i>	4
<i>Details</i>	6
<i>Harmonies</i>	12
<i>Previews</i>	24
<i>Color Blindness Simulation</i>	28
<i>CSS Examples</i>	31

Color

**XYZ(32.3536, 32.2057,
23.9131)**

Conversions

Conversions Part 1

Format	Color
Hex	B0957D
RGB	176, 149, 125
RGB Percent	69%, 58%, 49%
CMY	0.3098, 0.4157, 0.5098
CMYK	0.00, 0.15, 0.29, 0.31
HSL	28°, 24%, 59%
HSV	28°, 29%, 69%
XYZ	32.3536, 32.2057, 23.9131
YIQ	154.3370, 23.7960, -1.7400

Conversions

Conversions Part 2

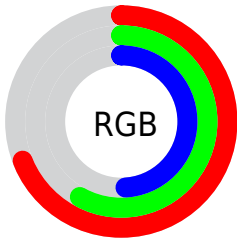
Format	Color
RYB	176, 170, 125
Decimal	11572605
CIELab	63.51, 6.39, 16.42
CIElCh	64, 17.621, 68.754
Yxy	32.2057, 0.3657, 0.3640
Android (android.graphics.Color)	4289762685 (0xFFB0957D)
YUV	154.3370, -14.4631, 18.9985
Hunter-Lab	56.7501, 2.4515, 14.7417

Details

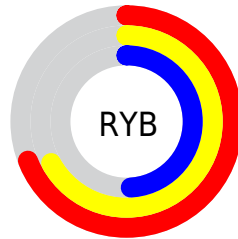
The XYZ color **32.3536, 32.2057, 23.9131** is a light color, and the websafe version is hex **CC9999**. A complement of this color would be **27.5218, 29.9500, 45.4047**, and the grayscale version is **30.9182, 32.5284, 35.4234**.

A 20% lighter version of the original color is **62.6705, 63.0820, 50.9924**, and **13.8406, 13.4681, 8.7076** is the 20% darker color. If you saturate the color by 10%, you get **29.9121, 28.9653, 18.0352**, and if you desaturate by 10%, it is **35.1139, 35.7646, 30.8810**.

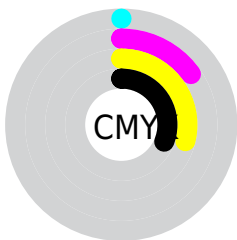
Distribution



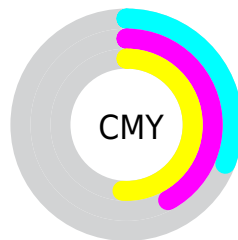
- Red (69%)
- Green (58%)
- Blue (49%)



- Red (69%)
- Yellow (67%)
- Blue (49%)



- Cyan (0%)
- Magenta (15%)
- Yellow (29%)
- Black (31%)



- Cyan (31%)
- Magenta (42%)
- Yellow (51%)

Brightness & Saturation Gradients

These gradients show how the XYZ color 32.3536, 32.2057, 23.9131 changes by changing the brightness by 10 percent. The first figure shows a shift by +10% for each color and the second figure -10%.

Similar to the brightness gradients but the following saturation gradients show a change of the XYZ color 32.3536, 32.2057, 23.9131 by changing the saturation by 10% instead.

■ 32.3536, 32.2057,
23.9131

■ 32.3536, 32.2057,
23.9131

304.4436,
312.0552, 285.6532

■ 21.7886, 21.5187,
15.0576

■ 62.7265, 63.1334,
50.8304

■ 13.8174, 13.5037,
8.7127

■ 83.2650, 84.1429,
69.7293

■ 8.0746, 7.7763,
4.4600

■ 107.8588,
109.3620, 92.8130

■ 4.1949, 3.9521,
1.8810

136.8732,
139.1751, 120.5001

■ 1.8130, 1.6468,
0.4806

170.6735,
173.9665, 153.2091

■ 0.5255, 0.3889,
0.0000

209.6251,

■ 0.0000, 0.0000,

214.1208, 191.3586

0.0000

254.0934,
260.0222, 235.3672

■ 32.3536, 32.2057,
23.9131

■ 32.3536, 32.2057,
23.9131

■ 29.9121, 28.9653,
18.0352

■ 35.1139, 35.7646,
30.8810

■ 27.7737, 26.0294,
13.1889

■ 38.2030, 39.6467,
38.9891

■ 25.9249, 23.3890,
9.3135

■ 41.6334, 43.8624,
48.2869

■ 24.3501, 21.0331,
6.3409

■ 45.4161, 48.4200,
58.8202

■ 23.0315, 18.9499,
4.1942

■ 49.5616, 53.3276,
70.6327

■ 21.9493, 17.1260,
2.7830

■ 54.0800, 58.5930,
83.7656

■ 21.0685, 15.5423,
1.9412

■ 58.9809, 64.2237,
98.2585

■ 20.9853, 15.3918,
1.8649

■ 62.4853, 69.5117,
104.7315

■ 65.0513, 74.6436,
105.5868

Harmonies

Analogous

The Analogous color harmony consists of three colors that are next to each other on the color wheel.



34.4422, 32.2057, 27.2649



32.3536, 32.2057, 23.9131



29.8976, 32.2057, 23.3279

Triad

The Triadic color harmony groups three colors that are evenly spaced from another and form a triangle on the color wheel.



32.3536, 32.2057, 23.9131



26.1772, 32.2057, 37.1649



33.6622, 32.2057, 46.7040

Complementary

The Complementary color scheme is a pair of colors which are on the opposite of each other on the color wheel.



32.3536, 32.2057, 23.9131



27.5218, 29.9500, 45.4047

Split Complementary

Split-complementary colors differ from the complementary color scheme. The scheme consists of three colors, the original color and two neighbors of the complement color.



31.3347, 32.2057, 50.2008



32.3536, 32.2057, 23.9131



27.0742, 32.2057, 44.2303

Square

The Square scheme is like the rectangle color scheme, but the four colors are evenly spaced on the color wheel.



32.3536, 32.2057, 23.9131



26.4175, 32.2057, 30.3911



28.9313, 32.2057, 49.2397



35.2254, 32.2057, 40.1984

Rectangle

The Rectangle color scheme consists of four colors that form a rectangle on the color wheel.



32.3536, 32.2057, 23.9131



28.3950, 32.2057, 24.4975



28.9313, 32.2057, 49.2397



32.9385, 32.2057, 48.3073

Sweetspot

The Sweet Spot groups the original color and five complimentary colors.



32.3544, 32.2072, 23.9138



69.1809, 71.7734, 70.4285



30.9222, 26.1712, 33.2137



14.8118, 15.3293, 14.7817



84.5950, 89.0005, 96.9216



16.2198, 17.0645, 18.5832

Same Dimension

The Same Dimension uses a secret algorithm to generate beautiful new colors.



32.3544, 32.2072, 23.9138



55.6780, 54.4486, 36.0822



36.8004, 41.0990, 25.3957



8.8151, 9.1428, 8.9527



15.4550, 11.4086, 1.3875



0.5448, 0.4761, 0.0632

Inverse Universe

The Inverse Universe completely reimagines the original color for something new.



27.5218, 29.9500, 45.4047



45.4216, 49.6560, 81.6859



23.8449, 22.5963, 44.1791



8.4018, 8.9499, 10.7910



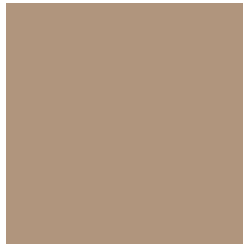
8.6913, 8.1830, 31.2584



0.3313, 0.3731, 1.0028

Previews

White Background



This preview shows how the XYZ color 32.3536, 32.2057, 23.9131 looks on a white background.

Color Contrast Check

Large Text (above 18pt) WCAG AA × Fail

Any Text WCAG AA × Fail

Large Text (above 18pt) WCAG AAA × Fail

Any Text WCAG AAA × Fail

Black Background



This preview shows how the XYZ color 32.3536, 32.2057, 23.9131 looks on a black background.

Color Contrast Check

Large Text (above 18pt) WCAG AA ✓ Pass

Any Text WCAG AA ✓ Pass

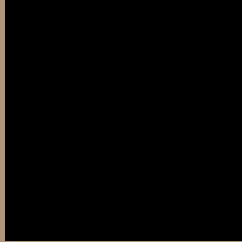
Large Text (above 18pt) WCAG AAA ✓ Pass

Any Text WCAG AAA ✓ Pass

If you want to check with other color combinations, try the [Color Contrast Checker](#).

XYZ 32.3536, 32.2057, 23.9131

Background



This preview shows how black text looks on a background with the XYZ color 32.3536, 32.2057, 23.9131.



This preview shows how white text looks on a background with the XYZ color 32.3536, 32.2057,

Color Blindness Simulation

Color vision deficiency is a very complex topic, and I could not describe the different causes any better than Wikipedia does, so if you want to learn more, you should check out their [article about color blindness](#).

Dichromacy



Original Color

32.3536, 32.2057, 23.9131

Protanopia

30.4906, 32.4300, 24.7313

Deuteranopia

32.8820, 32.2442, 23.8927



Tritanopia

34.9485, 32.3544, 35.8555

Trichromacy



Original Color

32.3536, 32.2057, 23.9131

Protanomaly

31.1426, 32.2877, 24.3294

Deuteranomaly

32.6517, 32.1255, 23.8819

Tritanomaly

33.9801, 32.1858, 31.2096

Monochromacy



Original Color

32.3536, 32.2057, 23.9131

Achromatopsia

30.7148, 32.3143, 35.1903

Achromatomaly

31.0865, 32.1210, 30.5481

CSS Examples

Text

The CSS property to change the color of the text to XYZ 32.3536, 32.2057, 23.9131 is called "color". The color property can be set on classes, ids or directly on the HTML element.

This example shows how text in the color `rgb(176, 149, 125)` looks like.

```
.text, #text, p{  
    color:rgb(176, 149, 125)  
}
```

If you want to add a text shadow in that color use the text-shadow property, you can generate a text shadow directly with our [CSS Text Shadow Generator](#).

Here you see how black text with a 4 pixel rgb(176, 149, 125) colored shadow looks like.

```
.shadow{ text-shadow: 4px 4px 2px rgb(176, 149, 125) }
```

Border

The CSS property to change the border of an element to XYZ 32.3536, 32.2057, 23.9131 is called "border". The border property can be set on classes, ids or directly on the HTML element.

This example shows the color as border, it can be applied via the CSS property "border" or "border-color".

```
.border, #border, table{ border:4px solid rgb(176, 149, 125) }
```


If only the border color should be changed use the property `border-color`.

```
.border{ border-color:rgb(176, 149, 125) }
```

If you want to add a box shadow in that color use:

Here you see how a box with a 4 pixel `rgb(176, 149, 125)` colored shadow looks like.

```
.boxshadow{ -moz-box-shadow:4px 4px 4px  
4px rgb(176, 149, 125); -webkit-box-  
shadow:4px 4px 4px 4px rgb(176, 149, 125);  
box-shadow:4px 4px 4px 4px rgb(176, 149,  
125) }
```

Background

The CSS property to change the background color of an element to XYZ 32.3536, 32.2057, 23.9131 is called "background". The background property can be set on classes, ids or directly on the HTML element.

```
.background, #background, body{  
background: rgb(176, 149, 125) }
```

If only the background color should be changed can be used:

```
.background{ background-color: rgb(176,  
149, 125) }
```

This example shows the color as background, it is applied via the CSS property "background".

To optimize and compress your CSS code, you can use our [online CSS compressor and optimizer](#) based on csstidy. If you want to create a linear or radial gradient as background or border, check our [CSS Gradient Generator](#).

Hey! You found this booklet interesting? Support Converting Colors with the new Membership Option!

The pro membership hides all ads, plus gives you double the colors in the color bucket, and more awesome pro features!

[Learn more, Memberships starting at \\$2.50/m!](#)

**Follow me
on Twitter!**

@ConvertingColor