

Converting Colors

XYZ(32.4252, 28.4839, 25.6204)

Have a look what the booklet for
XYZ(32.4252, 28.4839, 25.6204)
contains.

XYZ(32.4237, 28.4828, 25.6186)	3
<i>Conversions</i>	4
<i>Details</i>	6
<i>Harmonies</i>	12
<i>Previews</i>	24
<i>Color Blindness Simulation</i>	28
<i>CSS Examples</i>	31

Color

**XYZ(32.4237, 28.4828,
25.6186)**

Conversions

Conversions Part 1

Format	Color
Hex	B98484
RGB	185, 132, 132
RGB Percent	73%, 52%, 52%
CMY	0.2745, 0.4823, 0.4823
CMYK	0.00, 0.29, 0.29, 0.27
HSL	0°, 27%, 62%
HSV	0°, 29%, 73%
XYZ	32.4237, 28.4828, 25.6186
YIQ	147.8470, 31.5880, 11.2360

Conversions

Conversions Part 2

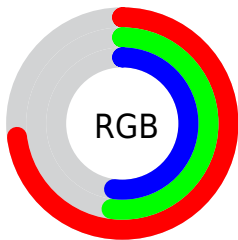
Format	Color
RYB	185, 132, 132
Decimal	12158084
CIELab	60.32, 20.39, 8.12
CIELCh	60, 21.946, 21.717
Yxy	28.4828, 0.3747, 0.3292
Android (android.graphics.Color)	4290348164 (0xFFB98484)
YUV	147.8470, -7.8126, 32.5832
Hunter-Lab	53.3693, 15.0487, 8.8978

Details

The XYZ color **32.4237, 28.4828, 25.6186** is a light color, and the websafe version is hex **CC9999**. A complement of this color would be **35.6210, 43.1047, 52.3416**, and the grayscale version is **28.1075, 29.5713, 32.2032**.

A 20% lighter version of the original color is **62.7239, 57.0780, 53.6102**, and **13.9387, 11.4844, 9.6657** is the 20% darker color. If you saturate the color by 10%, you get **28.9783, 23.4414, 18.7684**, and if you desaturate by 10%, it is **36.5399, 34.5062, 33.8006**.

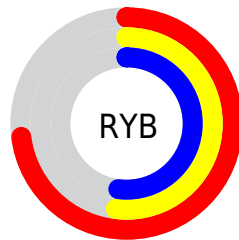
Distribution



Red (73%)

Green (52%)

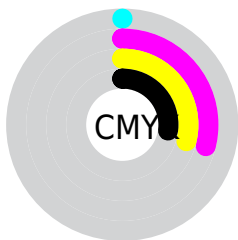
Blue (52%)



Red (73%)

Yellow (52%)

Blue (52%)

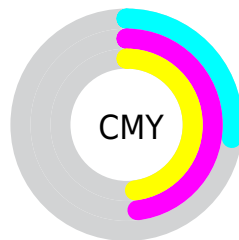


Cyan (0%)

Magenta (29%)

Yellow (29%)

Black (27%)



Cyan (27%)


Magenta (48%)

Yellow (48%)

Brightness & Saturation Gradients


These gradients show how the XYZ color 32.4237, 28.4828, 25.6186 changes by changing the brightness by 10 percent. The first figure shows a shift by +10% for each color and the second figure -10%.


Similar to the brightness gradients but the following saturation gradients show a change of the XYZ color 32.4237, 28.4828, 25.6186 by changing the saturation by 10% instead.


 32.4237, 28.4828,
25.6186


 32.4237, 28.4828,
25.6186


304.7560,
294.7668, 294.4504

 21.8424, 18.6899,
16.3153


 62.8355, 57.2543,
53.6355

 13.8571, 11.4464,
9.5908


 83.3967, 77.0018,
73.1862

 8.1024, 6.3680,
5.0265


 108.0152,
100.8362, 96.9899

 4.2129, 3.0701,
2.2038

137.0565,
129.1420, 125.4649

 1.8233, 1.1684,
0.6766

170.8859,
162.3036, 159.0300

 0.5316, 0.0357,
0.0000

209.8687,

 0.0000, 0.0000,

200.7053, 198.1036

0.0000

254.3702,
244.7316, 243.1042

■ 32.4237, 28.4828,
25.6186

■ 32.4237, 28.4828,
25.6186

■ 28.9783, 23.4414,
18.7684

■ 36.5399, 34.5062,
33.8006

■ 26.1661, 19.3264,
13.1780

■ 41.3575, 41.5557,
43.3779

■ 23.9493, 16.0824,
8.7711

■ 46.9077, 49.6772,
54.4117

■ 22.2849, 13.6470,
5.4627

■ 53.2195, 58.9129,
66.9595

■ 21.1246, 11.9490,
3.1563

■ 60.3199, 69.3028,
81.0754

■ 20.4114, 10.9053,
1.7386

■ 68.2350, 80.8846,
96.8107

■ 20.0486, 10.3744,
1.0176

■ 73.8176, 89.0543,
107.9063

■ 20.0078, 10.3146,
0.9364

Harmonies

Analogous

The Analogous color harmony consists of three colors that are next to each other on the color wheel.



32.7950, 28.4828, 33.3024



32.4237, 28.4828, 25.6186



30.5693, 28.4828, 20.3582

Triad

The Triadic color harmony groups three colors that are evenly spaced from another and form a triangle on the color wheel.



32.4237, 28.4828, 25.6186



23.0381, 28.4828, 22.3589



26.2990, 28.4828, 49.0406

Complementary

The Complementary color scheme is a pair of colors which are on the opposite of each other on the color wheel.



32.4237, 28.4828, 25.6186



35.6210, 43.1047, 52.3416

Split Complementary

Split-complementary colors differ from the complementary color scheme. The scheme consists of three colors, the original color and two neighbors of the complement color.



23.8523, 28.4828, 44.8565



32.4237, 28.4828, 25.6186



22.0569, 28.4828, 28.8309

Square

The Square scheme is like the rectangle color scheme, but the four colors are evenly spaced on the color wheel.



32.4237, 28.4828, 25.6186



25.1164, 28.4828, 18.7160



22.3443, 28.4828, 37.1158



29.1266, 28.4828, 47.7766

Rectangle

The Rectangle color scheme consists of four colors that form a rectangle on the color wheel.



32.4237, 28.4828, 25.6186



28.8075, 28.4828, 18.4898



22.3443, 28.4828, 37.1158



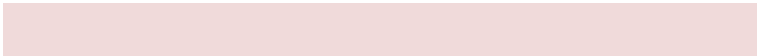
25.4077, 28.4828, 48.2020

Sweetspot

The Sweet Spot groups the original color and five complimentary colors.



32.4245, 28.4841, 25.6192



73.6097, 73.7510, 76.7725



37.0160, 30.3199, 49.8004



15.5844, 15.4831, 15.9852



88.6918, 93.3107, 101.6153



17.8044, 18.7317, 20.3988

Same Dimension

The Same Dimension uses a secret algorithm to generate beautiful new colors.



32.4245, 28.4841, 25.6192



54.2848, 45.4732, 38.3551



36.4849, 36.6051, 26.9727



9.0047, 9.0123, 9.3719



13.6235, 7.0234, 0.6376



0.4803, 0.2476, 0.0225

Inverse Universe

The Inverse Universe completely reimagines the original color for something new.



35.6210, 43.1047, 52.3416



60.8940, 75.7031, 93.6073



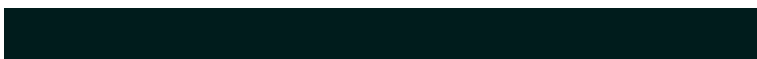
30.5853, 33.0332, 50.6630



9.2667, 10.2105, 11.5619



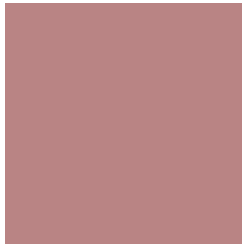
17.7738, 26.0073, 35.3362



0.6266, 0.9169, 1.2457

Previews

White Background



This preview shows how the XYZ color 32.4237, 28.4828, 25.6186 looks on a white background.

Color Contrast Check

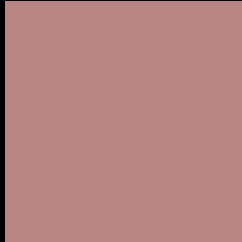
Large Text (above 18pt) WCAG AA ✓ Pass

Any Text WCAG AA ✗ Fail

Large Text (above 18pt) WCAG AAA ✗ Fail

Any Text WCAG AAA ✗ Fail

Black Background



This preview shows how the XYZ color 32.4237, 28.4828, 25.6186 looks on a black background.

Color Contrast Check

Large Text (above 18pt) WCAG AA ✓ Pass

Any Text WCAG AA ✓ Pass

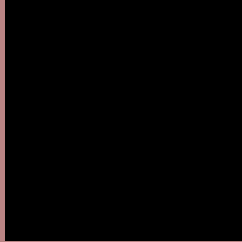
Large Text (above 18pt) WCAG AAA ✓ Pass

Any Text WCAG AAA × Fail

If you want to check with other color combinations, try the [Color Contrast Checker](#).

XYZ 32.4237, 28.4828, 25.6186

Background



This preview shows how black text looks on a background with the XYZ color 32.4237, 28.4828, 25.6186.



This preview shows how white text looks on a background with the XYZ color 32.4237, 28.4828,

25.6186.

Color Blindness Simulation

Color vision deficiency is a very complex topic, and I could not describe the different causes any better than Wikipedia does, so if you want to learn more, you should check out their [article about color blindness](#).

Dichromacy



Original Color

32.4237, 28.4828, 25.6186

Protanopia

27.3633, 28.5989, 28.5040

Deuteranopia

28.9244, 28.3672, 25.0700



Tritanopia

33.1737, 28.5948, 28.9702

Trichromacy



Original Color

32.4237, 28.4828, 25.6186

Protanomaly

28.9263, 28.3203, 27.2343

Deuteranomaly

30.0557, 28.3007, 25.3512

Tritanomaly

32.9534, 28.5067, 27.8103

Monochromacy



Original Color

32.4237, 28.4828, 25.6186

Achromatopsia

28.1479, 29.6138, 32.2495

Achromatomaly

29.2534, 28.8761, 29.6230

CSS Examples

Text

The CSS property to change the color of the text to XYZ 32.4237, 28.4828, 25.6186 is called "color". The color property can be set on classes, ids or directly on the HTML element.

This example shows how text in the color `rgb(185, 132, 132)` looks like.

```
.text, #text, p{  
    color:rgb(185, 132, 132)  
}
```

If you want to add a text shadow in that color use the text-shadow property, you can generate a text shadow directly with our [CSS Text Shadow Generator](#).

Here you see how black text with a 4 pixel rgb(185, 132, 132) colored shadow looks like.

```
.shadow{ text-shadow: 4px 4px 2px rgb(185, 132, 132) }
```

Border

The CSS property to change the border of an element to XYZ 32.4237, 28.4828, 25.6186 is called "border". The border property can be set on classes, ids or directly on the HTML element.

This example shows the color as border, it can be applied via the CSS property "border" or "border-color".

```
.border, #border, table{ border:4px solid rgb(185, 132, 132) }
```


If only the border color should be changed use the property `border-color`.

```
.border{ border-color:rgb(185, 132, 132) }
```

If you want to add a box shadow in that color use:

Here you see how a box with a 4 pixel `rgb(185, 132, 132)` colored shadow looks like.

```
.boxshadow{ -moz-box-shadow:4px 4px 4px  
4px rgb(185, 132, 132); -webkit-box-  
shadow:4px 4px 4px 4px rgb(185, 132, 132);  
box-shadow:4px 4px 4px 4px rgb(185, 132,  
132) }
```

Background

The CSS property to change the background color of an element to XYZ 32.4237, 28.4828, 25.6186 is called "background". The background property can be set on classes, ids or directly on the HTML element.

```
.background, #background, body{  
background: rgb(185, 132, 132) }
```

If only the background color should be changed can be used:

```
.background{ background-color: rgb(185,  
132, 132) }
```

This example shows the color as background, it is applied via the CSS property "background".

To optimize and compress your CSS code, you can use our [online CSS compressor and optimizer](#) based on csstidy. If you want to create a linear or radial gradient as background or border, check our [CSS Gradient Generator](#).

Hey! You found this booklet interesting? Support Converting Colors with the new Membership Option!

The pro membership hides all ads, plus gives you double the colors in the color bucket, and more awesome pro features!

[Learn more, Memberships starting at \\$2.50/m!](#)

**Follow me
on Twitter!**

@ConvertingColor