

Converting Colors

XYZ(32.4878, 28.1527, 27.9653)

Have a look what the booklet for
XYZ(32.4878, 28.1527, 27.9653)
contains.

XYZ(32.4100, 28.0197, 28.1262)	3
<i>Conversions</i>	4
<i>Details</i>	6
<i>Harmonies</i>	12
<i>Previews</i>	24
<i>Color Blindness Simulation</i>	28
<i>CSS Examples</i>	31

Color

**XYZ(32.4100, 28.0197,
28.1262)**

Conversions

Conversions Part 1

Format	Color
Hex	B8828B
RGB	184, 130, 139
RGB Percent	72%, 51%, 55%
CMY	0.2784, 0.4902, 0.4549
CMYK	0.00, 0.29, 0.24, 0.28
HSL	350°, 28%, 62%
HSV	350°, 29%, 72%
XYZ	32.4100, 28.0197, 28.1262
YIQ	147.1720, 29.2950, 14.2470

Conversions

Conversions Part 2

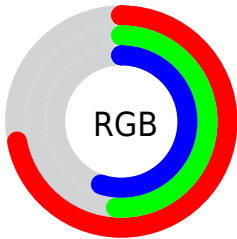
Format	Color
RYB	184, 130, 139
Decimal	12092043
CIELab	59.91, 22.13, 3.50
CIELCh	60, 22.406, 8.985
Yxy	28.0197, 0.3660, 0.3164
Android (android.graphics.Color)	4290282123 (0xFFB8828B)
YUV	147.1720, -4.0288, 32.2982
Hunter-Lab	52.9336, 16.6574, 5.5499

Details

The XYZ color **32.4100, 28.0197, 28.1262** is a light color, and the websafe version is hex **CC9999**. A complement of this color would be **34.0855, 42.1226, 46.8936**, and the grayscale version is **27.8126, 29.2611, 31.8653**.

A 20% lighter version of the original color is **62.7235, 56.3735, 57.4445**, and **13.8778, 11.2044, 10.8824** is the 20% darker color. If you saturate the color by 10%, you get **29.1349, 23.1385, 21.8889**, and if you desaturate by 10%, it is **36.2815, 33.8417, 35.3383**.

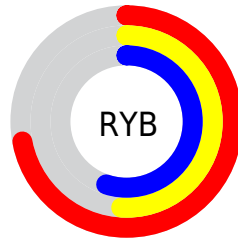
Distribution



Red (72%)

Green (51%)

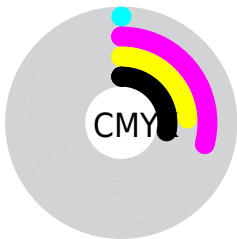
Blue (55%)



Red (72%)

Yellow (51%)

Blue (55%)

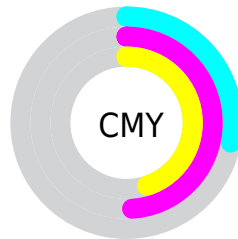


Cyan (0%)

Magenta (29%)

Yellow (24%)

Black (28%)



Cyan (28%)


Magenta (49%)


Yellow (45%)

Brightness & Saturation Gradients


These gradients show how the XYZ color 32.4100, 28.0197, 28.1262 changes by changing the brightness by 10 percent. The first figure shows a shift by +10% for each color and the second figure -10%.


Similar to the brightness gradients but the following saturation gradients show a change of the XYZ color 32.4100, 28.0197, 28.1262 by changing the saturation by 10% instead.


 32.4100, 28.0197,
28.1262


 32.4100, 28.0197,
28.1262


304.6949,
292.5610, 307.0003


 21.8319, 18.3405,
18.1809


 62.8142, 56.5159,
57.7114

 13.8494, 11.1947,
10.9092


 83.3709, 76.1017,
78.1884

 8.0970, 6.1980,
5.8924


 107.9847, 99.7585,
103.0131

 4.2094, 2.9658,
2.7120

137.0207,
127.8706, 132.6040

 1.8213, 1.1139,
0.9495

170.8444,
160.8226, 167.3796

 0.5304, 0.0000,
0.0000

209.8211,

 0.0000, 0.0000,

198.9987, 207.7585

0.0000

254.3161,
242.7834, 254.1592

■ 32.4100, 28.0197,
28.1262

■ 32.4100, 28.0197,
28.1262

■ 29.1349, 23.1385,
21.8889

■ 36.2815, 33.8417,
35.3383

■ 26.4241, 19.1449,
16.5828

■ 40.7747, 40.6461,
43.5630

■ 24.2458, 15.9863,
12.1631

■ 45.9165, 48.4770,
52.8382

■ 22.5642, 13.6034,
8.5810

■ 51.7313, 57.3745,
63.1991

■ 21.3391, 11.9283,
5.7825

■ 58.2423, 67.3765,
74.6796

■ 20.5235, 10.8820,
3.7074

■ 65.4715, 78.5192,
87.3118

■ 20.0364, 10.3190,
2.2781

■ 72.2144, 88.3852,
100.7181

■ 20.0101, 10.2875,
2.2037

■ 73.5773, 88.9304,
107.8951

Harmonies

Analogous

The Analogous color harmony consists of three colors that are next to each other on the color wheel.



32.0729, 28.0197, 36.4801



32.4100, 28.0197, 28.1262



31.1153, 28.0197, 21.6742

Triad

The Triadic color harmony groups three colors that are evenly spaced from another and form a triangle on the color wheel.



32.4100, 28.0197, 28.1262



23.3358, 28.0197, 19.8775



24.7176, 28.0197, 47.5986

Complementary

The Complementary color scheme is a pair of colors which are on the opposite of each other on the color wheel.



32.4100, 28.0197, 28.1262



34.0855, 42.1226, 46.8936

Split Complementary

Split-complementary colors differ from the complementary color scheme. The scheme consists of three colors, the original color and two neighbors of the complement color.



22.6013, 28.0197, 41.4669



32.4100, 28.0197, 28.1262



21.8439, 28.0197, 25.2273

Square

The Square scheme is like the rectangle color scheme, but the four colors are evenly spaced on the color wheel.



32.4100, 28.0197, 28.1262



25.7864, 28.0197, 17.5009



21.5849, 28.0197, 33.0221



27.4956, 28.0197, 48.7511

Rectangle

The Rectangle color scheme consists of four colors that form a rectangle on the color wheel.



32.4100, 28.0197, 28.1262



29.5517, 28.0197, 18.9532



21.5849, 28.0197, 33.0221



23.9110, 28.0197, 46.0052

Sweetspot

The Sweet Spot groups the original color and five complimentary colors.



32.4108, 28.0210, 28.1268



74.0852, 73.9405, 79.2787



34.3145, 28.5413, 49.0481



15.7009, 15.5295, 16.5993



88.6918, 93.3107, 101.6153



17.8044, 18.7317, 20.3988

Same Dimension

The Same Dimension uses a secret algorithm to generate beautiful new colors.



32.4108, 28.0210, 28.1268



54.9243, 45.0784, 43.7286



34.3873, 32.9831, 25.6747



9.0640, 9.0360, 9.6846



13.8089, 7.0973, 1.6145



0.5059, 0.2578, 0.1573

Inverse Universe

The Inverse Universe completely reimagines the original color for something new.



32.4108, 28.0210, 28.1268



54.9243, 45.0784, 43.7286



31.4950, 35.4800, 50.5360



9.0640, 9.0360, 9.6846



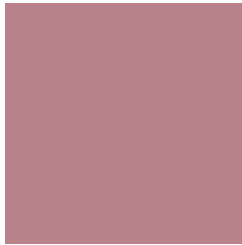
13.8089, 7.0973, 1.6145



0.5059, 0.2578, 0.1573

Previews

White Background



This preview shows how the XYZ color 32.4100, 28.0197, 28.1262 looks on a white background.

Color Contrast Check

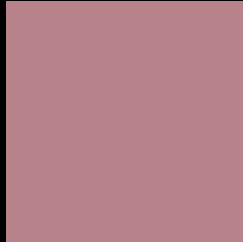
Large Text (above 18pt) WCAG AA ✓ Pass

Any Text WCAG AA ✗ Fail

Large Text (above 18pt) WCAG AAA ✗ Fail

Any Text WCAG AAA ✗ Fail

Black Background



This preview shows how the XYZ color 32.4100, 28.0197, 28.1262 looks on a black background.

Color Contrast Check

Large Text (above 18pt) WCAG AA ✓ Pass

Any Text WCAG AA ✓ Pass

Large Text (above 18pt) WCAG AAA ✓ Pass

Any Text WCAG AAA × Fail

If you want to check with other color combinations, try the [Color Contrast Checker](#).

XYZ 32.4100, 28.0197, 28.1262

Background



This preview shows how black text looks on a background with the XYZ color 32.4100, 28.0197, 28.1262.



This preview shows how white text looks on a background with the XYZ color 32.4100, 28.0197,

Color Blindness Simulation

Color vision deficiency is a very complex topic, and I could not describe the different causes any better than Wikipedia does, so if you want to learn more, you should check out their [article about color blindness](#).

Dichromacy



Original Color

32.4100, 28.0197, 28.1262

Protanopia

27.2723, 28.2561, 31.6203

Deuteranopia

28.5914, 28.1394, 27.5914



Tritanopia

32.4834, 28.0491, 28.5129

Trichromacy



Original Color

32.4100, 28.0197, 28.1262

Protanomaly

28.7639, 27.9524, 30.2649

Deuteranomaly

29.7538, 27.8783, 27.8576

Tritanomaly

32.4834, 28.0491, 28.5129

Monochromacy



Original Color

32.4100, 28.0197, 28.1262

Achromatopsia

27.7328, 29.1771, 31.7738

Achromatomaly

29.0561, 28.5370, 30.3623

CSS Examples

Text

The CSS property to change the color of the text to XYZ 32.4100, 28.0197, 28.1262 is called "color". The color property can be set on classes, ids or directly on the HTML element.

This example shows how text in the color `rgb(184, 130, 139)` looks like.

```
.text, #text, p{  
    color:rgb(184, 130, 139)  
}
```

If you want to add a text shadow in that color use the text-shadow property, you can generate a text shadow directly with our [CSS Text Shadow Generator](#).

Here you see how black text with a 4 pixel rgb(184, 130, 139) colored shadow looks like.

```
.shadow{ text-shadow: 4px 4px 2px rgb(184, 130, 139) }
```

Border

The CSS property to change the border of an element to XYZ 32.4100, 28.0197, 28.1262 is called "border". The border property can be set on classes, ids or directly on the HTML element.

This example shows the color as border, it can be applied via the CSS property "border" or "border-color".

```
.border, #border, table{ border:4px solid rgb(184, 130, 139) }
```


If only the border color should be changed use the property `border-color`.

```
.border{ border-color:rgb(184, 130, 139) }
```

If you want to add a box shadow in that color use:

Here you see how a box with a 4 pixel `rgb(184, 130, 139)` colored shadow looks like.

```
.boxshadow{ -moz-box-shadow:4px 4px 4px  
4px rgb(184, 130, 139); -webkit-box-  
shadow:4px 4px 4px 4px rgb(184, 130, 139);  
box-shadow:4px 4px 4px 4px rgb(184, 130,  
139) }
```

Background

The CSS property to change the background color of an element to XYZ 32.4100, 28.0197, 28.1262 is called "background". The background property can be set on classes, ids or directly on the HTML element.

```
.background, #background, body{  
background: rgb(184, 130, 139) }
```

If only the background color should be changed can be used:

```
.background{ background-color: rgb(184,  
130, 139) }
```

This example shows the color as background, it is applied via the CSS property "background".

To optimize and compress your CSS code, you can use our [online CSS compressor and optimizer](#) based on csstidy. If you want to create a linear or radial gradient as background or border, check our [CSS Gradient Generator](#).

Hey! You found this booklet interesting? Support Converting Colors with the new Membership Option!

The pro membership hides all ads, plus gives you double the colors in the color bucket, and more awesome pro features!

[Learn more, Memberships starting at \\$2.50/m!](#)

**Follow me
on Twitter!**

@ConvertingColor