

Converting Colors

XYZ(32.5716, 29.1822, 26.2390)

Have a look what the booklet for
XYZ(32.5716, 29.1822, 26.2390)
contains.

XYZ(32.4260, 29.0887, 26.0959)	3
<i>Conversions</i>	4
<i>Details</i>	6
<i>Harmonies</i>	12
<i>Previews</i>	24
<i>Color Blindness Simulation</i>	28
<i>CSS Examples</i>	31

Color

**XYZ(32.4260, 29.0887,
26.0959)**

Conversions

Conversions Part 1

Format	Color
Hex	B78785
RGB	183, 135, 133
RGB Percent	72%, 53%, 52%
CMY	0.2824, 0.4706, 0.4784
CMYK	0.00, 0.26, 0.27, 0.28
HSL	2°, 26%, 62%
HSV	2°, 27%, 72%
XYZ	32.4260, 29.0887, 26.0959
YIQ	149.1240, 29.2500, 9.5540

Conversions

Conversions Part 2

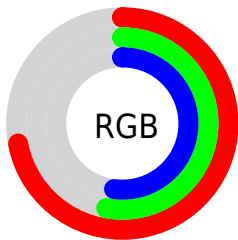
Format	Color
RYB	183, 135, 133
Decimal	12027781
CIELab	60.86, 18.08, 8.28
CIELCh	61, 19.888, 24.619
Yxy	29.0887, 0.3701, 0.3320
Android (android.graphics.Color)	4290217861 (0xFFB78785)
YUV	149.1240, -7.9491, 29.7093
Hunter-Lab	53.9339, 12.9328, 9.0663

Details

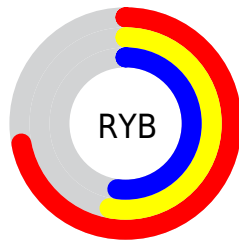
The XYZ color **32.4260, 29.0887, 26.0959** is a light color, and the websafe version is hex **CC9999**. A complement of this color would be **34.7433, 41.4516, 50.9695**, and the grayscale version is **28.6437, 30.1354, 32.8174**.

A 20% lighter version of the original color is **62.7813, 58.0369, 54.3477**, and **13.9020, 11.8042, 9.9332** is the 20% darker color. If you saturate the color by 10%, you get **29.0182, 24.1232, 19.2564**, and if you desaturate by 10%, it is **36.4600, 34.9538, 34.2316**.

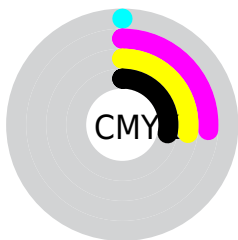
Distribution



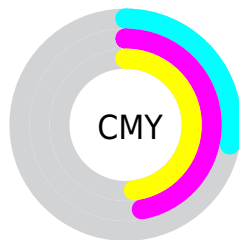
- Red (72%)
- Green (53%)
- Blue (52%)



- Red (72%)
- Yellow (53%)
- Blue (52%)



- Cyan (0%)
- Magenta (26%)
- Yellow (27%)
- Black (28%)





- Cyan (28%)
- Magenta (47%)
- Yellow (48%)

Brightness & Saturation Gradients


These gradients show how the XYZ color 32.4260, 29.0887, 26.0959 changes by changing the brightness by 10 percent. The first figure shows a shift by +10% for each color and the second figure -10%.


Similar to the brightness gradients but the following saturation gradients show a change of the XYZ color 32.4260, 29.0887, 26.0959 by changing the saturation by 10% instead.


 32.4260, 29.0887,
26.0959


 32.4260, 29.0887,
26.0959


304.7662,
297.6332, 296.8730

 21.8442, 19.1479,
16.6690


 62.8390, 58.2180,
54.4156

 13.8584, 11.7772,
9.8393


 83.4010, 78.1753,
74.1455

 8.1033, 6.5922,
5.1883


 108.0204,
102.2402, 98.1467

 4.2135, 3.2084,
2.2975

137.0625,
130.7972, 126.8379

 1.8236, 1.2415,
0.7298

170.8928,
164.2306, 160.6376

 0.5318, 0.0952,
0.0000

209.8767,

 0.0000, 0.0000,

202.9248, 199.9643

0.0000

254.3793,
247.2642, 245.2366

■ 32.4260, 29.0887,
26.0959

■ 32.4260, 29.0887,
26.0959

■ 29.0182, 24.1232,
19.2564

■ 36.4600, 34.9538,
34.2316

■ 26.2031, 20.0090,
13.6444

■ 41.1470, 41.7557,
43.7235

■ 23.9476, 16.6995,
9.1879

■ 46.5150, 49.5341,
54.6304

■ 22.2141, 14.1421,
5.8063

■ 52.5896, 58.3257,
67.0068

■ 20.9609, 12.2777,
3.4090

■ 59.3953, 68.1649,
80.9044

■ 20.1395, 11.0387,
1.8904

■ 66.9552, 79.0846,
96.3724

■ 19.6872, 10.3419,
1.0993

■ 73.3384, 88.8073,
107.8839

■ 19.6080, 10.2265,
0.9405

Harmonies

Analogous

The Analogous color harmony consists of three colors that are next to each other on the color wheel.



32.9073, 29.0887, 33.0289



32.4260, 29.0887, 26.0959



30.6323, 29.0887, 21.4109

Triad

The Triadic color harmony groups three colors that are evenly spaced from another and form a triangle on the color wheel.



32.4260, 29.0887, 26.0959



23.7838, 29.0887, 24.1127



27.1836, 29.0887, 48.0966

Complementary

The Complementary color scheme is a pair of colors which are on the opposite of each other on the color wheel.



32.4260, 29.0887, 26.0959



34.7433, 41.4516, 50.9695

Split Complementary

Split-complementary colors differ from the complementary color scheme. The scheme consists of three colors, the original color and two neighbors of the complement color.



24.8640, 29.0887, 44.7796



32.4260, 29.0887, 26.0959



22.9811, 29.0887, 30.3541

Square

The Square scheme is like the rectangle color scheme, but the four colors are evenly spaced on the color wheel.



32.4260, 29.0887, 26.0959



25.6252, 29.0887, 20.3972



23.3639, 29.0887, 37.9922



29.7745, 29.0887, 46.4854

Rectangle

The Rectangle color scheme consists of four colors that form a rectangle on the color wheel.



32.4260, 29.0887, 26.0959



28.9897, 29.0887, 19.8170



23.3639, 29.0887, 37.9922



26.3482, 29.0887, 47.5073

Sweetspot

The Sweet Spot groups the original color and five complimentary colors.



32.4268, 29.0901, 26.0965



72.9688, 73.7325, 76.8378



36.2908, 30.1925, 47.8106



15.8236, 15.8603, 16.3771



88.6918, 93.3107, 101.6153



17.8044, 18.7317, 20.3988

Same Dimension

The Same Dimension uses a secret algorithm to generate beautiful new colors.



32.4268, 29.0901, 26.0965



54.1488, 46.3800, 38.8494



36.2753, 36.7871, 27.3793



9.0327, 9.0684, 9.3812



13.6910, 7.1584, 0.6601



0.4925, 0.2720, 0.0265

Inverse Universe

The Inverse Universe completely reimagines the original color for something new.



34.7433, 41.4516, 50.9695



59.0110, 72.3362, 91.0878



30.1648, 32.2946, 49.4434



9.2350, 10.1472, 11.5513



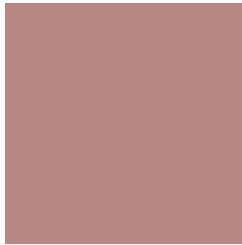
16.7601, 23.9800, 34.9983



0.6004, 0.8645, 1.2370

Previews

White Background



This preview shows how the XYZ color 32.4260, 29.0887, 26.0959 looks on a white background.

Color Contrast Check

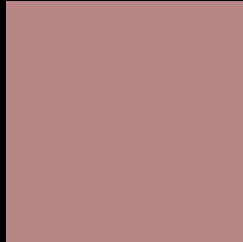
Large Text (above 18pt) WCAG AA ✓ Pass

Any Text WCAG AA × Fail

Large Text (above 18pt) WCAG AAA × Fail

Any Text WCAG AAA × Fail

Black Background



This preview shows how the XYZ color 32.4260, 29.0887, 26.0959 looks on a black background.

Color Contrast Check

Large Text (above 18pt) WCAG AA ✓ Pass

Any Text WCAG AA ✓ Pass

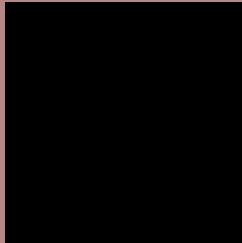
Large Text (above 18pt) WCAG AAA ✓ Pass

Any Text WCAG AAA × Fail

If you want to check with other color combinations, try the [Color Contrast Checker](#).

XYZ 32.4260, 29.0887, 26.0959

Background



This preview shows how black text looks on a background with the XYZ color 32.4260, 29.0887, 26.0959.



This preview shows how white text looks on a background with the XYZ color 32.4260, 29.0887,

Color Blindness Simulation

Color vision deficiency is a very complex topic, and I could not describe the different causes any better than Wikipedia does, so if you want to learn more, you should check out their [article about color blindness](#).

Dichromacy



Original Color

32.4260, 29.0887, 26.0959

Protanopia

28.0428, 29.4069, 28.6242

Deuteranopia

29.7742, 29.2274, 25.9020



Tritanopia

33.1887, 28.9790, 30.2298

Trichromacy



Original Color

32.4260, 29.0887, 26.0959

Protanomaly

29.4421, 29.2376, 27.7586

Deuteranomaly

30.6311, 29.0154, 25.8159

Tritanomaly

33.0259, 29.1340, 28.6937

Monochromacy



Original Color

32.4260, 29.0887, 26.0959

Achromatopsia

28.5667, 30.0544, 32.7292

Achromatomaly

29.6291, 29.5068, 30.1204

CSS Examples

Text

The CSS property to change the color of the text to XYZ 32.4260, 29.0887, 26.0959 is called "color". The color property can be set on classes, ids or directly on the HTML element.

This example shows how text in the color `rgb(183, 135, 133)` looks like.

```
.text, #text, p{  
    color:rgb(183, 135, 133)  
}
```

If you want to add a text shadow in that color use the text-shadow property, you can generate a text shadow directly with our [CSS Text Shadow Generator](#).

Here you see how black text with a 4 pixel rgb(183, 135, 133) colored shadow looks like.

```
.shadow{ text-shadow: 4px 4px 2px rgb(183, 135, 133) }
```

Border

The CSS property to change the border of an element to XYZ 32.4260, 29.0887, 26.0959 is called "border". The border property can be set on classes, ids or directly on the HTML element.

This example shows the color as border, it can be applied via the CSS property "border" or "border-color".

```
.border, #border, table{ border:4px solid rgb(183, 135, 133) }
```


If only the border color should be changed use the property `border-color`.

```
.border{ border-color:rgb(183, 135, 133) }
```

If you want to add a box shadow in that color use:

Here you see how a box with a 4 pixel `rgb(183, 135, 133)` colored shadow looks like.

```
.boxshadow{ -moz-box-shadow:4px 4px 4px  
4px rgb(183, 135, 133); -webkit-box-  
shadow:4px 4px 4px 4px rgb(183, 135, 133);  
box-shadow:4px 4px 4px 4px rgb(183, 135,  
133) }
```

Background

The CSS property to change the background color of an element to XYZ 32.4260, 29.0887, 26.0959 is called "background". The background property can be set on classes, ids or directly on the HTML element.

```
.background, #background, body{  
background: rgb(183, 135, 133) }
```

If only the background color should be changed can be used:

```
.background{ background-color: rgb(183,  
135, 133) }
```

This example shows the color as background, it is applied via the CSS property "background".

To optimize and compress your CSS code, you can use our [online CSS compressor and optimizer](#) based on csstidy. If you want to create a linear or radial gradient as background or border, check our [CSS Gradient Generator](#).

Hey! You found this booklet interesting? Support Converting Colors with the new Membership Option!

The pro membership hides all ads, plus gives you double the colors in the color bucket, and more awesome pro features!

[Learn more, Memberships starting at \\$2.50/m!](#)

**Follow me
on Twitter!**

@ConvertingColor