

Converting Colors

XYZ(32.6209, 32.0840, 24.9052)

Have a look what the booklet for
XYZ(32.6209, 32.0840, 24.9052)
contains.

XYZ(32.6176, 32.0854, 24.8960)	3
<i>Conversions</i>	4
<i>Details</i>	6
<i>Harmonies</i>	12
<i>Previews</i>	24
<i>Color Blindness Simulation</i>	28
<i>CSS Examples</i>	31

Color

**XYZ(32.6176, 32.0854,
24.8960)**

Conversions

Conversions Part 1

Format	Color
Hex	B19480
RGB	177, 148, 128
RGB Percent	69%, 58%, 50%
CMY	0.3059, 0.4196, 0.4980
CMYK	0.00, 0.16, 0.28, 0.31
HSL	24°, 24%, 60%
HSV	24°, 28%, 69%
XYZ	32.6176, 32.0854, 24.8960
YIQ	154.3910, 23.7040, -0.0720

Conversions

Conversions Part 2

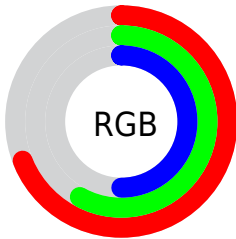
Format	Color
RYB	177, 162, 128
Decimal	11637888
CIELab	63.41, 7.76, 14.62
CIElCh	63, 16.553, 62.045
Yxy	32.0854, 0.3640, 0.3581
Android (android.graphics.Color)	4289827968 (0xFFB19480)
YUV	154.3910, -13.0108, 19.8281
Hunter-Lab	56.6440, 3.6596, 13.5918

Details

The XYZ color **32.6176, 32.0854, 24.8960** is a light color, and the websafe version is hex **CC9999**. A complement of this color would be **28.8945, 31.8764, 46.2249**, and the grayscale version is **30.9358, 32.5469, 35.4435**.

A 20% lighter version of the original color is **63.0653, 62.9009, 52.5332**, and **13.9982, 13.3990, 9.2456** is the 20% darker color. If you saturate the color by 10%, you get **29.9836, 28.5220, 18.7629**, and if you desaturate by 10%, it is **35.6052, 36.0305, 32.1504**.

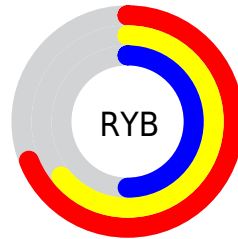
Distribution



Red (69%)

Green (58%)

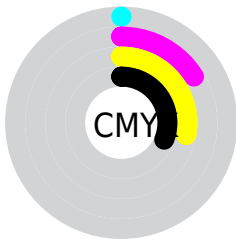
Blue (50%)



Red (69%)

Yellow (64%)

Blue (50%)

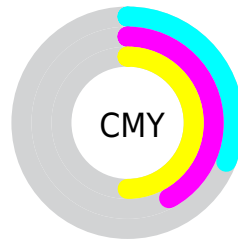


Cyan (0%)

Magenta (16%)

Yellow (28%)

Black (31%)



Cyan (31%)


Magenta (42%)


Yellow (50%)

Brightness & Saturation Gradients


These gradients show how the XYZ color 32.6176, 32.0854, 24.8960 changes by changing the brightness by 10 percent. The first figure shows a shift by +10% for each color and the second figure -10%.


Similar to the brightness gradients but the following saturation gradients show a change of the XYZ color 32.6176, 32.0854, 24.8960 by changing the saturation by 10% instead.


 32.6176, 32.0854,
24.8960


 32.6176, 32.0854,
24.8960


305.6186,
311.5081, 290.7507

 21.9915, 21.4267,
15.7813


 63.1367, 62.9449,
52.4505

 13.9672, 13.4363,
9.2168


 83.7605, 83.9146,
71.7273

 8.1794, 7.7297,
4.7841

 108.4475,
109.0901, 95.2286

 4.2627, 3.9225,
2.0647

137.5630,
138.8557, 123.3729

 1.8518, 1.6303,
0.5946

171.4726,
173.5960, 156.5787

 0.5486, 0.3779,
0.0000

210.5415,

 0.0000, 0.0000,

213.6952, 195.2646

0.0000

255.1350,
259.5377, 239.8491

■ 32.6176, 32.0854,
24.8960

■ 32.6176, 32.0854,
24.8960

■ 29.9836, 28.5220,
18.7629

■ 35.6052, 36.0305,
32.1504

■ 27.6863, 25.3236,
13.6923

■ 38.9575, 40.3642,
40.5769

■ 25.7108, 22.4792,
9.6227

■ 42.6882, 45.0991,
50.2256

■ 24.0402, 19.9749,
6.4857

■ 46.8092, 50.2455,
61.1431

■ 22.6556, 17.7960,
4.2042

■ 51.3324, 55.8135,
73.3735

■ 21.5355, 15.9264,
2.6881

■ 56.2686, 61.8129,
86.9589

■ 20.6487, 14.3457,
1.7985

■ 61.6285, 68.2531,
101.9394

■ 20.4656, 14.0154,
1.6266

■ 64.9812, 74.1665,
105.4984

■ 68.0146, 80.2333,
106.5096

Harmonies

Analogous

The Analogous color harmony consists of three colors that are next to each other on the color wheel.



34.4022, 32.0854, 28.6347



32.6176, 32.0854, 24.8960



30.3386, 32.0854, 23.7412

Triad

The Triadic color harmony groups three colors that are evenly spaced from another and form a triangle on the color wheel.



32.6176, 32.0854, 24.8960



26.2850, 32.0854, 35.3896



32.9044, 32.0854, 46.8139

Complementary

The Complementary color scheme is a pair of colors which are on the opposite of each other on the color wheel.



32.6176, 32.0854, 24.8960



28.8945, 31.8764, 46.2249

Split Complementary

Split-complementary colors differ from the complementary color scheme. The scheme consists of three colors, the original color and two neighbors of the complement color.



30.6543, 32.0854, 49.1897



32.6176, 32.0854, 24.8960



26.8977, 32.0854, 42.0988

Square

The Square scheme is like the rectangle color scheme, but the four colors are evenly spaced on the color wheel.



32.6176, 32.0854, 24.8960



26.7528, 32.0854, 29.3260



28.4689, 32.0854, 47.3655



34.5735, 32.0854, 41.2184

Rectangle

The Rectangle color scheme consists of four colors that form a rectangle on the color wheel.



32.6176, 32.0854, 24.8960



28.8656, 32.0854, 24.4581



28.4689, 32.0854, 47.3655



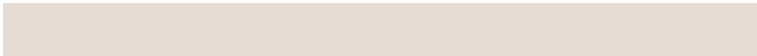
32.1871, 32.0854, 48.0451

Sweetspot

The Sweet Spot groups the original color and five complimentary colors.



32.6184, 32.0869, 24.8967



69.4848, 71.9235, 71.9405



31.9709, 27.2338, 35.6495



14.8577, 15.3293, 15.0802



84.5950, 89.0005, 96.9216



16.2198, 17.0645, 18.5832

Same Dimension

The Same Dimension uses a secret algorithm to generate beautiful new colors.



32.6184, 32.0869, 24.8967



55.5688, 53.6311, 37.8924



36.7994, 40.4489, 26.2903



8.7717, 9.0560, 8.9382



14.8847, 10.2679, 1.1974



0.5264, 0.4391, 0.0570

Inverse Universe

The Inverse Universe completely reimagines the original color for something new.



28.8945, 31.8764, 46.2249



47.8219, 53.1868, 82.2409



25.2121, 24.5116, 44.9974



8.4459, 9.0380, 10.8057



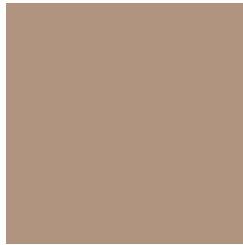
9.4516, 9.7035, 31.5118



0.3530, 0.4166, 1.0100

Previews

White Background



This preview shows how the XYZ color 32.6176, 32.0854, 24.8960 looks on a white background.

Color Contrast Check

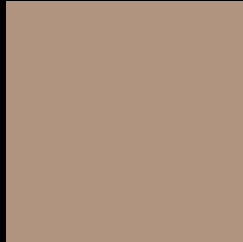
Large Text (above 18pt) WCAG AA × Fail

Any Text WCAG AA × Fail

Large Text (above 18pt) WCAG AAA × Fail

Any Text WCAG AAA × Fail

Black Background



This preview shows how the XYZ color 32.6176, 32.0854, 24.8960 looks on a black background.

Color Contrast Check

Large Text (above 18pt) WCAG AA ✓ Pass

Any Text WCAG AA ✓ Pass

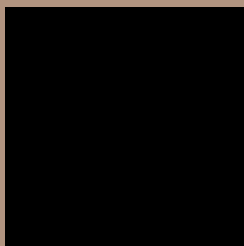
Large Text (above 18pt) WCAG AAA ✓ Pass

Any Text WCAG AAA ✓ Pass

If you want to check with other color combinations, try the [Color Contrast Checker](#).

XYZ 32.6176, 32.0854, 24.8960

Background



This preview shows how black text looks on a background with the XYZ color 32.6176, 32.0854, 24.8960.



This preview shows how white text looks on a background with the XYZ color 32.6176, 32.0854,

Color Blindness Simulation

Color vision deficiency is a very complex topic, and I could not describe the different causes any better than Wikipedia does, so if you want to learn more, you should check out their [article about color blindness](#).

Dichromacy



Original Color

32.6176, 32.0854, 24.8960

Protanopia

30.3883, 32.1025, 26.0675

Deuteranopia

32.8463, 32.2033, 24.9067



Tritanopia

34.7120, 32.0164, 35.3606

Trichromacy



Original Color

32.6176, 32.0854, 24.8960

Protanomaly

31.0322, 31.9604, 25.6525

Deuteranomaly

32.8463, 32.2033, 24.9067

Tritanomaly

33.8266, 31.8788, 31.1584

Monochromacy



Original Color

32.6176, 32.0854, 24.8960

Achromatopsia

30.7148, 32.3143, 35.1903

Achromatomaly

31.2394, 32.1822, 31.3534

CSS Examples

Text

The CSS property to change the color of the text to XYZ 32.6176, 32.0854, 24.8960 is called "color". The color property can be set on classes, ids or directly on the HTML element.

This example shows how text in the color `rgb(177, 148, 128)` looks like.

```
.text, #text, p{  
    color:rgb(177, 148, 128)  
}
```

If you want to add a text shadow in that color use the text-shadow property, you can generate a text shadow directly with our [CSS Text Shadow Generator](#).

Here you see how black text with a 4 pixel rgb(177, 148, 128) colored shadow looks like.

```
.shadow{ text-shadow: 4px 4px 2px rgb(177, 148, 128) }
```

Border

The CSS property to change the border of an element to XYZ 32.6176, 32.0854, 24.8960 is called "border". The border property can be set on classes, ids or directly on the HTML element.

This example shows the color as border, it can be applied via the CSS property "border" or "border-color".

```
.border, #border, table{ border:4px solid rgb(177, 148, 128) }
```


If only the border color should be changed use the property `border-color`.

```
.border{ border-color:rgb(177, 148, 128) }
```

If you want to add a box shadow in that color use:

Here you see how a box with a 4 pixel `rgb(177, 148, 128)` colored shadow looks like.

```
.boxshadow{ -moz-box-shadow:4px 4px 4px  
4px rgb(177, 148, 128); -webkit-box-  
shadow:4px 4px 4px 4px rgb(177, 148, 128);  
box-shadow:4px 4px 4px 4px rgb(177, 148,  
128) }
```

Background

The CSS property to change the background color of an element to XYZ 32.6176, 32.0854, 24.8960 is called "background". The background property can be set on classes, ids or directly on the HTML element.

```
.background, #background, body{  
background: rgb(177, 148, 128) }
```

If only the background color should be changed can be used:

```
.background{ background-color: rgb(177,  
148, 128) }
```

This example shows the color as background, it is applied via the CSS property "background".

To optimize and compress your CSS code, you can use our [online CSS compressor and optimizer](#) based on csstidy. If you want to create a linear or radial gradient as background or border, check our [CSS Gradient Generator](#).

Hey! You found this booklet interesting? Support Converting Colors with the new Membership Option!

The pro membership hides all ads, plus gives you double the colors in the color bucket, and more awesome pro features!

[Learn more, Memberships starting at \\$2.50/m!](#)

**Follow me
on Twitter!**

@ConvertingColor