

Converting Colors

XYZ(32.7152, 30.0326, 28.4987)

Have a look what the booklet for
XYZ(32.7152, 30.0326, 28.4987)
contains.

XYZ(32.7152, 30.0326, 28.4987)	3
<i>Conversions</i>	4
<i>Details</i>	6
<i>Harmonies</i>	12
<i>Previews</i>	24
<i>Color Blindness Simulation</i>	28
<i>CSS Examples</i>	31

Color

**XYZ(32.7152, 30.0326,
28.4987)**

Conversions

Conversions Part 1

Format	Color
Hex	B48B8B
RGB	180, 139, 139
RGB Percent	71%, 55%, 55%
CMY	0.2941, 0.4549, 0.4549
CMYK	0.00, 0.23, 0.23, 0.29
HSL	0°, 21%, 63%
HSV	0°, 23%, 71%
XYZ	32.7152, 30.0326, 28.4987
YIQ	151.2590, 24.4360, 8.6920

Conversions

Conversions Part 2

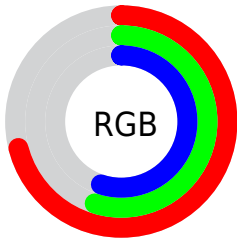
Format	Color
R_{YB}	180, 139, 139
Decimal	11832203
CIE _{Lab}	61.68, 15.57, 6.00
CIE _{LCh}	62, 16.687, 21.079
Yxy	30.0326, 0.3585, 0.3291
Android (android.graphics.Color)	4290022283 (0xFFB48B8B)
YUV	151.2590, -6.0437, 25.2059
Hunter-Lab	54.8020, 10.6558, 7.5288

Details

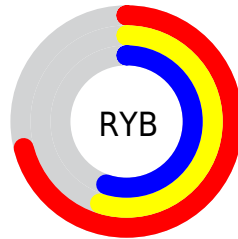
The XYZ color **32.7152, 30.0326, 28.4987** is a light color, and the websafe version is hex **CC9999**. A complement of this color would be **35.2065, 41.4257, 49.3206**, and the grayscale version is **29.5447, 31.0834, 33.8498**.

A 20% lighter version of the original color is **63.1765, 59.7786, 58.0778**, and **13.9797, 12.3016, 11.0888** is the 20% darker color. If you saturate the color by 10%, you get **29.1118, 24.7600, 21.3343**, and if you desaturate by 10%, it is **36.9659, 36.2527, 36.9479**.

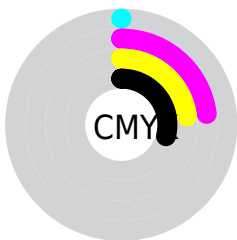
Distribution



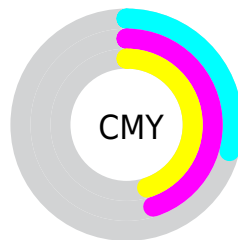
- Red (71%)
- Green (55%)
- Blue (55%)



- Red (71%)
- Yellow (55%)
- Blue (55%)



- Cyan (0%)
- Magenta (23%)
- Yellow (23%)
- Black (29%)



- Cyan (29%)
- Magenta (45%)
- Yellow (45%)

Brightness & Saturation Gradients

These gradients show how the XYZ color 32.7152, 30.0326, 28.4987 changes by changing the brightness by 10 percent. The first figure shows a shift by +10% for each color and the second figure -10%.

Similar to the brightness gradients but the following saturation gradients show a change of the XYZ color 32.7152, 30.0326, 28.4987 by changing the saturation by 10% instead.

■ 32.7152, 30.0326,
28.4987

■ 32.7152, 30.0326,
28.4987

306.0522,
302.0564, 308.8289

■ 22.0665, 19.8633,
18.4596

■ 63.2883, 59.7137,
58.3123

■ 14.0227, 12.2957,
11.1076

■ 83.9434, 79.9944,
78.9239

■ 8.2183, 6.9454,
6.0242

■ 108.6648,
104.4143, 103.8968

■ 4.2879, 3.4280,
2.7908

137.8177,
133.3578, 133.6494

■ 1.8663, 1.3590,
0.9888

171.7676,
167.2094, 168.6004

■ 0.5571, 0.1862,
0.0000

210.8797,

■ 0.0000, 0.0000,

206.3534, 209.1683

0.0000

255.5194,
251.1743, 255.7716

■ 32.7152, 30.0326,
28.4987

■ 32.7152, 30.0326,
28.4987

■ 29.1118, 24.7600,
21.3343

■ 36.9659, 36.2527,
36.9479

■ 26.1217, 20.3846,
15.3901

■ 41.8907, 43.4591,
46.7386

■ 23.7114, 16.8576,
10.5986

■ 47.5182, 51.6936,
57.9261

■ 21.8434, 14.1241,
6.8853

■ 53.8744, 60.9944,
70.5624

■ 20.4757, 12.1227,
4.1666

■ 60.9840, 71.3976,
84.6966

■ 19.5601, 10.7829,
2.3468

■ 68.8706, 82.9377,
100.3754

■ 19.0392, 10.0206,
1.3115

■ 72.6325, 88.4433,
107.8509

■ 18.8226, 9.7037,
0.8809

Harmonies

Analogous

The Analogous color harmony consists of three colors that are next to each other on the color wheel.



32.9721, 30.0326, 34.6326



32.7152, 30.0326, 28.4987



31.3111, 30.0326, 24.0833

Triad

The Triadic color harmony groups three colors that are evenly spaced from another and form a triangle on the color wheel.



32.7152, 30.0326, 28.4987



25.3519, 30.0326, 25.6071



27.8884, 30.0326, 46.3218

Complementary

The Complementary color scheme is a pair of colors which are on the opposite of each other on the color wheel.



32.7152, 30.0326, 28.4987



35.2065, 41.4257, 49.3206

Split Complementary

Split-complementary colors differ from the complementary color scheme. The scheme consists of three colors, the original color and two neighbors of the complement color.



25.9470, 30.0326, 43.1609



32.7152, 30.0326, 28.4987



24.5332, 30.0326, 30.8414

Square

The Square scheme is like the rectangle color scheme, but the four colors are evenly spaced on the color wheel.



32.7152, 30.0326, 28.4987



27.0376, 30.0326, 22.5704



24.7453, 30.0326, 37.2960



30.1076, 30.0326, 45.4819

Rectangle

The Rectangle color scheme consists of four colors that form a rectangle on the color wheel.



32.7152, 30.0326, 28.4987



29.9514, 30.0326, 22.4477



24.7453, 30.0326, 37.2960



27.1835, 30.0326, 45.6783

Sweetspot

The Sweet Spot groups the original color and five complimentary colors.



32.7160, 30.0340, 28.4993



71.9252, 72.9013, 76.7324



36.2935, 31.4642, 47.3405



15.4326, 15.5912, 16.3600



86.6293, 91.1408, 99.2523



17.0014, 17.8868, 19.4787

Same Dimension

The Same Dimension uses a secret algorithm to generate beautiful new colors.



32.7160, 30.0340, 28.4993



56.1170, 49.7697, 45.3060



35.9672, 36.5363, 29.5830



8.4964, 8.5054, 8.8464



13.1370, 6.7726, 0.6148



0.4134, 0.2131, 0.0194

Inverse Universe

The Inverse Universe completely reimagines the original color for something new.



35.2065, 41.4257, 49.3206



61.3809, 73.8469, 89.3134



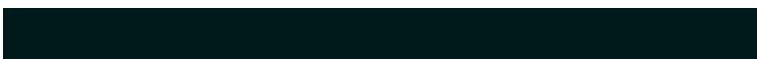
31.3703, 33.7532, 48.0418



8.7426, 9.6314, 10.9046



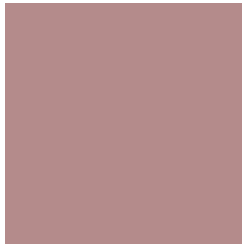
17.1389, 25.0782, 34.0743



0.5393, 0.7891, 1.0721

Previews

White Background



This preview shows how the XYZ color 32.7152, 30.0326, 28.4987 looks on a white background.

Color Contrast Check

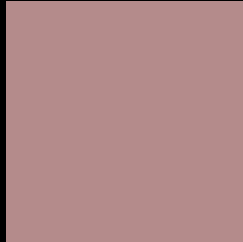
Large Text (above 18pt) WCAG AA ✓ Pass

Any Text WCAG AA ✗ Fail

Large Text (above 18pt) WCAG AAA ✗ Fail

Any Text WCAG AAA ✗ Fail

Black Background



This preview shows how the XYZ color 32.7152, 30.0326, 28.4987 looks on a black background.

Color Contrast Check

Large Text (above 18pt) WCAG AA ✓ Pass

Any Text WCAG AA ✓ Pass

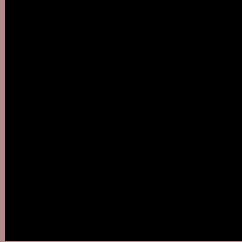
Large Text (above 18pt) WCAG AAA ✓ Pass

Any Text WCAG AAA ✓ Pass

If you want to check with other color combinations, try the [Color Contrast Checker](#).

XYZ 32.7152, 30.0326, 28.4987

Background



This preview shows how black text looks on a background with the XYZ color 32.7152, 30.0326, 28.4987.



This preview shows how white text looks on a background with the XYZ color 32.7152, 30.0326,

Color Blindness Simulation

Color vision deficiency is a very complex topic, and I could not describe the different causes any better than Wikipedia does, so if you want to learn more, you should check out their [article about color blindness](#).

Dichromacy



Original Color

32.7152, 30.0326, 28.4987

Protanopia

28.9184, 30.2808, 30.7062

Deuteranopia

30.7092, 30.1063, 28.2373



Tritanopia

33.4898, 30.1388, 32.0692

Trichromacy



Original Color

32.7152, 30.0326, 28.4987

Protanomaly

30.1121, 29.9903, 29.7928

Deuteranomaly

31.2737, 29.9516, 28.1777

Tritanomaly

33.2554, 30.0450, 30.8346

Monochromacy



Original Color

32.7152, 30.0326, 28.4987

Achromatopsia

29.4150, 30.9469, 33.7012

Achromatomaly

30.6005, 30.6554, 31.9080

CSS Examples

Text

The CSS property to change the color of the text to XYZ 32.7152, 30.0326, 28.4987 is called "color". The color property can be set on classes, ids or directly on the HTML element.

This example shows how text in the color `rgb(180, 139, 139)` looks like.

```
.text, #text, p{  
    color:rgb(180, 139, 139)  
}
```

If you want to add a text shadow in that color use the text-shadow property, you can generate a text shadow directly with our [CSS Text Shadow Generator](#).

Here you see how black text with a 4 pixel rgb(180, 139, 139) colored shadow looks like.

```
.shadow{ text-shadow: 4px 4px 2px rgb(180, 139, 139) }
```

Border

The CSS property to change the border of an element to XYZ 32.7152, 30.0326, 28.4987 is called "border". The border property can be set on classes, ids or directly on the HTML element.

This example shows the color as border, it can be applied via the CSS property "border" or "border-color".

```
.border, #border, table{ border:4px solid rgb(180, 139, 139) }
```


If only the border color should be changed use the property `border-color`.

```
.border{ border-color:rgb(180, 139, 139) }
```

If you want to add a box shadow in that color use:

Here you see how a box with a 4 pixel `rgb(180, 139, 139)` colored shadow looks like.

```
.boxshadow{ -moz-box-shadow:4px 4px 4px  
4px rgb(180, 139, 139); -webkit-box-  
shadow:4px 4px 4px 4px rgb(180, 139, 139);  
box-shadow:4px 4px 4px 4px rgb(180, 139,  
139) }
```

Background

The CSS property to change the background color of an element to XYZ 32.7152, 30.0326, 28.4987 is called "background". The background property can be set on classes, ids or directly on the HTML element.

```
.background, #background, body{  
background: rgb(180, 139, 139) }
```

If only the background color should be changed can be used:

```
.background{ background-color: rgb(180,  
139, 139) }
```

This example shows the color as background, it is applied via the CSS property "background".

To optimize and compress your CSS code, you can use our [online CSS compressor and optimizer](#) based on csstidy. If you want to create a linear or radial gradient as background or border, check our [CSS Gradient Generator](#).

Hey! You found this booklet interesting? Support Converting Colors with the new Membership Option!

The pro membership hides all ads, plus gives you double the colors in the color bucket, and more awesome pro features!

[Learn more, Memberships starting at \\$2.50/m!](#)

**Follow me
on Twitter!**

@ConvertingColor