

# Converting Colors

XYZ(32.7703, 32.2690, 28.9286)

Have a look what the booklet for  
XYZ(32.7703, 32.2690, 28.9286)  
contains.

<b>XYZ(32.8632, 32.3576, 28.9397)</b> .....	3
<b><i>Conversions</i></b> .....	4
<b><i>Details</i></b> .....	6
<b><i>Harmonies</i></b> .....	12
<b><i>Previews</i></b> .....	24
<b><i>Color Blindness Simulation</i></b> .....	28
<b><i>CSS Examples</i></b> .....	31

# Color

**XYZ(32.8632, 32.3576,  
28.9397)**

# Conversions

## Conversions Part 1

Format	Color
Hex	AE958B
RGB	174, 149, 139
RGB Percent	68%, 58%, 55%
CMY	0.3176, 0.4157, 0.4549
CMYK	0.00, 0.14, 0.20, 0.32
HSL	17°, 18%, 61%
HSV	17°, 20%, 68%
XYZ	32.8632, 32.3576, 28.9397
YIQ	155.3350, 18.1100, 2.1900

# Conversions

## Conversions Part 2

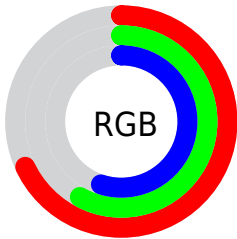
<b>Format</b>	<b>Color</b>
<b>RYB</b>	174, 153, 139
Decimal	11441547
CIELab	63.64, 7.67, 8.72
CIELCh	64, 11.611, 48.647
Yxy	32.3576, 0.3490, 0.3436
Android (android.graphics.Color)	4289631627 (0xFFAE958B)
YUV	155.3350, -8.0532, 16.3692
Hunter-Lab	56.8837, 3.5775, 9.6547

# Details

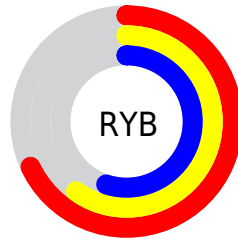
The XYZ color **32.8632, 32.3576, 28.9397** is a light color, and the websafe version is hex **999999**. A complement of this color would be **31.5627, 35.0951, 45.1552**, and the grayscale version is **31.3338, 32.9656, 35.8995**.

A 20% lighter version of the original color is **63.5035, 63.3406, 58.7481**, and **14.0560, 13.5216, 11.3203** is the 20% darker color. If you saturate the color by 10%, you get **29.8295, 28.1653, 22.1473**, and if you desaturate by 10%, it is **36.3108, 37.0534, 36.8692**.

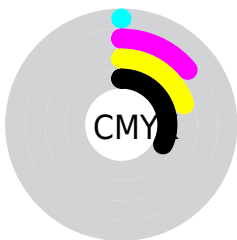
# Distribution



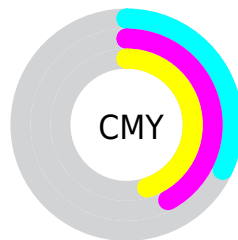
- Red (68%)
- Green (58%)
- Blue (55%)



- Red (68%)
- Yellow (60%)
- Blue (55%)



- Cyan (0%)
- Magenta (14%)
- Yellow (20%)
- Black (32%)



- Cyan (32%)
- Magenta (42%)
- Yellow (45%)

# Brightness & Saturation Gradients

These gradients show how the XYZ color 32.8632, 32.3576, 28.9397 changes by changing the brightness by 10 percent. The first figure shows a shift by +10% for each color and the second figure -10%.

Similar to the brightness gradients but the following saturation gradients show a change of the XYZ color 32.8632, 32.3576, 28.9397 by changing the saturation by 10% instead.



■ 32.8632, 32.3576,  
28.9397

■ 32.8632, 32.3576,  
28.9397

306.7088,  
312.7450, 310.9824

■ 22.1804, 21.6348,  
18.7900

■ 63.5180, 63.3713,  
59.0223

■ 14.1069, 13.5888,  
11.3434

■ 84.2207, 84.4309,  
79.7923

■ 8.2772, 7.8352,  
6.1812

■ 108.9941,  
109.7050, 104.9395

■ 4.3261, 3.9897,  
2.8850

138.2035,  
139.5778, 134.8825

■ 1.8882, 1.6678,  
1.0362

172.2144,  
174.4338, 170.0397

■ 0.5700, 0.4027,  
0.0000

211.3919,

■ 0.0000, 0.0000,

214.6575, 210.8297

0.0000

256.1016,  
260.6331, 257.6711

■ 32.8632, 32.3576,  
28.9397

■ 32.8632, 32.3576,  
28.9397

■ 29.8295, 28.1653,  
22.1473

■ 36.3108, 37.0534,  
36.8692

■ 27.1911, 24.4553,  
16.4375

■ 40.1850, 42.2644,  
45.9828

■ 24.9315, 21.2109,  
11.7544

■ 44.5009, 48.0074,  
56.3274

■ 23.0323, 18.4133,  
8.0359

■ 49.2723, 54.2971,  
67.9467

■ 21.4731, 16.0419,  
5.2136

■ 54.5123, 61.1476,  
80.8822

■ 20.2315, 14.0745,  
3.2096

■ 60.2333, 68.5727,  
95.1735

■ 19.2819, 12.4867,  
1.9325

■ 65.4993, 76.2059,  
105.8648

■ 18.5848, 11.2569,  
1.1933

■ 69.2025, 83.6124,  
107.0992

■ 71.2657, 87.7387,  
107.7869

# Harmonies

## Analogous

The Analogous color harmony consists of three colors that are next to each other on the color wheel.



33.8076, 32.3576, 32.4508



32.8632, 32.3576, 28.9397



31.3733, 32.3576, 27.1756

# Triad

The Triadic color harmony groups three colors that are evenly spaced from another and form a triangle on the color wheel.



32.8632, 32.3576, 28.9397



27.7956, 32.3576, 33.5017



31.7636, 32.3576, 44.3970

# Complementary

The Complementary color scheme is a pair of colors which are on the opposite of each other on the color wheel.



32.8632, 32.3576, 28.9397



31.5627, 35.0951, 45.1552

# Split Complementary

Split-complementary colors differ from the complementary color scheme. The scheme consists of three colors, the original color and two neighbors of the complement color.



30.1447, 32.3576, 44.7412



32.8632, 32.3576, 28.9397



27.8918, 32.3576, 38.1676

# Square

The Square scheme is like the rectangle color scheme, but the four colors are evenly spaced on the color wheel.



32.8632, 32.3576, 28.9397



28.4713, 32.3576, 29.6507



28.7388, 32.3576, 42.3759



33.1575, 32.3576, 41.4730



# Rectangle

The Rectangle color scheme consists of four colors that form a rectangle on the color wheel.



32.8632, 32.3576, 28.9397



30.2881, 32.3576, 27.1140



28.7388, 32.3576, 42.3759



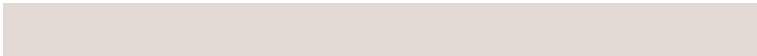
31.2265, 32.3576, 44.8272

# Sweetspot

The Sweet Spot groups the original color and five complimentary colors.



32.8641, 32.3591, 28.9404



68.5862, 70.8855, 73.2400



33.3969, 30.1477, 39.2207



15.1464, 15.6236, 16.0495



84.5950, 89.0005, 96.9216



16.2198, 17.0645, 18.5832



# Same Dimension

The Same Dimension uses a secret algorithm to generate beautiful new colors.



32.8641, 32.3591, 28.9404



57.1493, 55.3073, 46.9362



35.8282, 38.2873, 29.9284



8.1847, 8.3743, 8.3984



13.5245, 8.2545, 0.8805



0.4234, 0.3240, 0.0402



# Inverse Universe

The Inverse Universe completely reimagines the original color for something new.



31.5627, 35.0951, 45.1552



54.3670, 61.1476, 81.5741



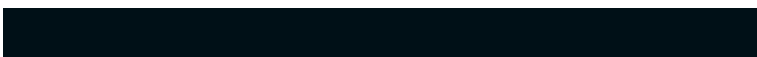
28.6569, 29.2835, 44.1866



8.0400, 8.6794, 10.2042



10.8462, 12.8262, 30.9486



0.3453, 0.4439, 0.8755



# Previews

## White Background



This preview shows how the XYZ color 32.8632, 32.3576, 28.9397 looks on a white background.

## Color Contrast Check

Large Text (above 18pt) WCAG AA × Fail

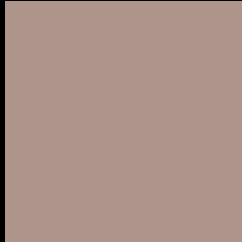
Any Text WCAG AA × Fail

Large Text (above 18pt) WCAG AAA × Fail

Any Text WCAG AAA × Fail



# Black Background



This preview shows how the XYZ color 32.8632, 32.3576, 28.9397 looks on a black background.

## Color Contrast Check

Large Text (above 18pt) WCAG AA ✓ Pass

Any Text WCAG AA ✓ Pass

Large Text (above 18pt) WCAG AAA ✓ Pass

Any Text WCAG AAA ✓ Pass

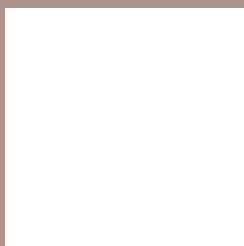
If you want to check with other color combinations, try the [Color Contrast Checker](#).

**XYZ 32.8632, 32.3576, 28.9397**

## **Background**



This preview shows how black text looks on a background with the XYZ color 32.8632, 32.3576, 28.9397.



This preview shows how white text looks on a background with the XYZ color 32.8632, 32.3576,



# Color Blindness Simulation

Color vision deficiency is a very complex topic, and I could not describe the different causes any better than Wikipedia does, so if you want to learn more, you should check out their [article about color blindness](#).

## Dichromacy



### Original Color

32.8632, 32.3576, 28.9397

### Protanopia

30.8605, 32.5079, 29.8474

### Deuteranopia

33.0868, 32.4729, 28.9501



## Tritanopia

34.3549, 32.2565, 36.7632

# Trichromacy



## Original Color

32.8632, 32.3576, 28.9397

## Protanomaly

31.4789, 32.3493, 29.3959

## Deuteranomaly

33.0868, 32.4729, 28.9501

## Tritanomaly

33.6988, 32.2158, 33.7203

# Monochromacy



## Original Color

32.8632, 32.3576, 28.9397

## Achromatopsia

31.1553, 32.7778, 35.6950

## Achromatomaly

31.7163, 32.6338, 33.0611

# CSS Examples

## Text

The CSS property to change the color of the text to XYZ 32.8632, 32.3576, 28.9397 is called "color". The color property can be set on classes, ids or directly on the HTML element.

This example shows how text in the color `rgb(174, 149, 139)` looks like.

```
.text, #text, p{  
    color:rgb(174, 149, 139)  
}
```

If you want to add a text shadow in that color use the text-shadow property, you can generate a text shadow directly with our [CSS Text Shadow Generator](#).

Here you see how black text with a 4 pixel rgb(174, 149, 139) colored shadow looks like.

```
.shadow{ text-shadow: 4px 4px 2px rgb(174, 149, 139) }
```

## Border

The CSS property to change the border of an element to XYZ 32.8632, 32.3576, 28.9397 is called "border". The border property can be set on classes, ids or directly on the HTML element.

This example shows the color as border, it can be applied via the CSS property "border" or "border-color".

```
.border, #border, table{ border:4px solid rgb(174, 149, 139) }
```



If only the border color should be changed use the property `border-color`.

```
.border{ border-color:rgb(174, 149, 139) }
```

If you want to add a box shadow in that color use:

Here you see how a box with a 4 pixel `rgb(174, 149, 139)` colored shadow looks like.

```
.boxshadow{ -moz-box-shadow:4px 4px 4px  
4px rgb(174, 149, 139); -webkit-box-  
shadow:4px 4px 4px 4px rgb(174, 149, 139);  
box-shadow:4px 4px 4px 4px rgb(174, 149,  
139) }
```

# Background

The CSS property to change the background color of an element to XYZ 32.8632, 32.3576, 28.9397 is called "background". The background property can be set on classes, ids or directly on the HTML element.

```
.background, #background, body{  
background: rgb(174, 149, 139) }
```

If only the background color should be changed can be used:

```
.background{ background-color: rgb(174,  
149, 139) }
```

This example shows the color as background, it is applied via the CSS property "background".

To optimize and compress your CSS code, you can use our [online CSS compressor and optimizer](#) based on csstidy. If you want to create a linear or radial gradient as background or border, check our [CSS Gradient Generator](#).

Hey! You found this booklet interesting? Support Converting Colors with the new Membership Option!

The pro membership hides all ads, plus gives you double the colors in the color bucket, and more awesome pro features!

**[Learn more, Memberships starting at \\$2.50/m!](#)**

**Follow me  
on Twitter!**

@ConvertingColor