

Converting Colors

XYZ(32.7801, 31.7481, 30.6099)

Have a look what the booklet for
XYZ(32.7801, 31.7481, 30.6099)
contains.

XYZ(32.9233, 31.8797, 30.8037)	3
<i>Conversions</i>	4
<i>Details</i>	6
<i>Harmonies</i>	12
<i>Previews</i>	24
<i>Color Blindness Simulation</i>	28
<i>CSS Examples</i>	31

Color

**XYZ(32.9233, 31.8797,
30.8037)**

Conversions

Conversions Part 1

Format	Color
Hex	AE9390
RGB	174, 147, 144
RGB Percent	68%, 58%, 56%
CMY	0.3176, 0.4235, 0.4353
CMYK	0.00, 0.16, 0.17, 0.32
HSL	6°, 16%, 62%
HSV	6°, 17%, 68%
XYZ	32.9233, 31.8797, 30.8037
YIQ	154.7310, 17.0550, 4.7910

Conversions

Conversions Part 2

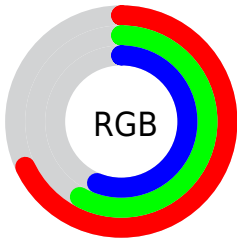
Format	Color
RYB	174, 147, 144
Decimal	11441040
CIELab	63.24, 9.58, 5.33
CIELCh	63, 10.967, 29.094
Yxy	31.8797, 0.3444, 0.3334
Android (android.graphics.Color)	4289631120 (0xFFAE9390)
YUV	154.7310, -5.2904, 16.8989
Hunter-Lab	56.4621, 5.2754, 7.1770

Details

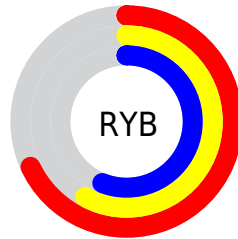
The XYZ color **32.9233, 31.8797, 30.8037** is a light color, and the websafe version is hex **CC9999**. A complement of this color would be **33.7042, 38.1102, 45.6243**, and the grayscale version is **31.0549, 32.6722, 35.5800**.

A 20% lighter version of the original color is **63.7128, 62.6735, 62.1652**, and **14.0884, 13.2388, 12.4025** is the 20% darker color. If you saturate the color by 10%, you get **29.4233, 26.8464, 23.5737**, and if you desaturate by 10%, it is **36.9615, 37.6608, 39.2251**.

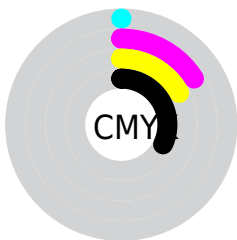
Distribution



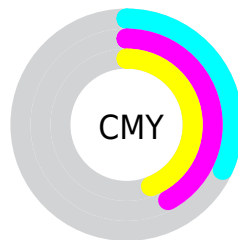
- Red (68%)
- Green (58%)
- Blue (56%)



- Red (68%)
- Yellow (58%)
- Blue (56%)



- Cyan (0%)
- Magenta (16%)
- Yellow (17%)
- Black (32%)



- Cyan (32%)
- Magenta (42%)
- Yellow (44%)

Brightness & Saturation Gradients

These gradients show how the XYZ color 32.9233, 31.8797, 30.8037 changes by changing the brightness by 10 percent. The first figure shows a shift by +10% for each color and the second figure -10%.

Similar to the brightness gradients but the following saturation gradients show a change of the XYZ color 32.9233, 31.8797, 30.8037 by changing the saturation by 10% instead.

■ 32.9233, 31.8797,
30.8037

■ 32.9233, 31.8797,
30.8037

306.9751,
310.5709, 319.9561

■ 22.2266, 21.2696,
20.1922

■ 63.6112, 62.6224,
62.0068

■ 14.1411, 13.3212,
12.3494

■ 84.3332, 83.5239,
83.4356

■ 8.3012, 7.6501,
6.8567

109.1277,
108.6246, 109.3071

■ 4.3417, 3.8719,
3.2955

138.3601,
138.3090, 140.0400

■ 1.8972, 1.6022,
1.2474

172.3956,
172.9614, 176.0528

■ 0.5752, 0.3591,
0.0181

211.5998,

■ 0.0000, 0.0000,

212.9663, 217.7641

0.0000

256.3378,
258.7080, 265.5923

■ 32.9233, 31.8797,
30.8037

■ 32.9233, 31.8797,
30.8037

■ 29.4233, 26.8464,
23.5737

■ 36.9615, 37.6608,
39.2251

■ 26.4363, 22.5261,
17.4794

■ 41.5565, 44.2139,
48.8863

■ 23.9388, 18.8880,
12.4637

■ 46.7295, 51.5675,
59.8353

■ 21.9045, 15.8970,
8.4635

■ 52.4995, 59.7475,
72.1171

■ 20.3047, 13.5152,
5.4095

■ 58.8847, 68.7785,
85.7743

■ 19.1075, 11.7005,
3.2234

■ 65.9028, 78.6839,
100.8479

■ 18.2764, 10.4054,
1.8144

■ 71.2657, 87.7387,
107.7869

■ 17.7639, 9.5731,
1.0494

■ 17.6627, 9.4127,
0.8859

Harmonies

Analogous

The Analogous color harmony consists of three colors that are next to each other on the color wheel.



33.3137, 31.8797, 34.8439



32.9233, 31.8797, 30.8037



31.8247, 31.8797, 28.0222

Triad

The Triadic color harmony groups three colors that are evenly spaced from another and form a triangle on the color wheel.



32.9233, 31.8797, 30.8037



27.8648, 31.8797, 30.5928



30.2546, 31.8797, 43.7581

Complementary

The Complementary color scheme is a pair of colors which are on the opposite of each other on the color wheel.



32.9233, 31.8797, 30.8037



33.7042, 38.1102, 45.6243

Split Complementary

Split-complementary colors differ from the complementary color scheme. The scheme consists of three colors, the original color and two neighbors of the complement color.



28.8262, 31.8797, 42.3888



32.9233, 31.8797, 30.8037



27.4751, 31.8797, 34.5796

Square

The Square scheme is like the rectangle color scheme, but the four colors are evenly spaced on the color wheel.



32.9233, 31.8797, 30.8037



28.9036, 31.8797, 27.9078



27.8212, 31.8797, 38.9367



31.7422, 31.8797, 42.5400

Rectangle

The Rectangle color scheme consists of four colors that form a rectangle on the color wheel.



32.9233, 31.8797, 30.8037



30.8563, 31.8797, 27.1337



27.8212, 31.8797, 38.9367



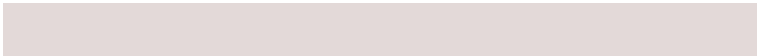
29.7519, 31.8797, 43.5833

Sweetspot

The Sweet Spot groups the original color and five complimentary colors.



32.9242, 31.8811, 30.8044



68.7516, 70.7511, 74.7294



34.7798, 31.8859, 42.8499



15.1582, 15.5502, 16.3523



84.5950, 89.0005, 96.9216



16.2198, 17.0645, 18.5832

Same Dimension

The Same Dimension uses a secret algorithm to generate beautiful new colors.



32.9242, 31.8811, 30.8044



56.9822, 53.8958, 50.2017



35.4103, 36.8533, 31.6331



8.0674, 8.1396, 8.3593



12.8323, 6.8702, 0.6497



0.3771, 0.2314, 0.0248

Inverse Universe

The Inverse Universe completely reimagines the original color for something new.



33.7042, 38.1102, 45.6243



58.6847, 67.4993, 82.5725



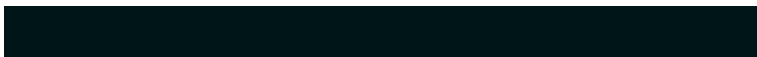
31.0304, 32.7626, 44.7330



8.1668, 8.9330, 10.2465



14.2597, 19.6532, 32.0864



0.4160, 0.5853, 0.8990

Previews

White Background



This preview shows how the XYZ color 32.9233, 31.8797, 30.8037 looks on a white background.

Color Contrast Check

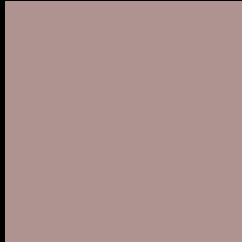
Large Text (above 18pt) WCAG AA × Fail

Any Text WCAG AA × Fail

Large Text (above 18pt) WCAG AAA × Fail

Any Text WCAG AAA × Fail

Black Background



This preview shows how the XYZ color 32.9233, 31.8797, 30.8037 looks on a black background.

Color Contrast Check

Large Text (above 18pt) WCAG AA ✓ Pass

Any Text WCAG AA ✓ Pass

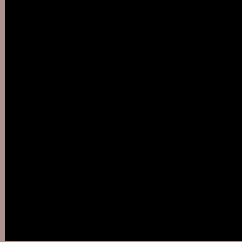
Large Text (above 18pt) WCAG AAA ✓ Pass

Any Text WCAG AAA ✓ Pass

If you want to check with other color combinations, try the [Color Contrast Checker](#).

XYZ 32.9233, 31.8797, 30.8037

Background



This preview shows how black text looks on a background with the XYZ color 32.9233, 31.8797, 30.8037.



This preview shows how white text looks on a background with the XYZ color 32.9233, 31.8797,

Color Blindness Simulation

Color vision deficiency is a very complex topic, and I could not describe the different causes any better than Wikipedia does, so if you want to learn more, you should check out their [article about color blindness](#).

Dichromacy



Original Color

32.9233, 31.8797, 30.8037

Protanopia

30.5623, 32.0571, 32.1806

Deuteranopia

32.6372, 31.9641, 30.8351



Tritanopia

34.0306, 31.8812, 35.8126

Trichromacy



Original Color

32.9233, 31.8797, 30.8037

Protanomaly

31.3592, 31.9951, 31.7170

Deuteranomaly

32.8575, 32.0777, 30.8454

Tritanomaly

33.6256, 31.9387, 34.0983

Monochromacy



Original Color

32.9233, 31.8797, 30.8037

Achromatopsia

31.1553, 32.7778, 35.6950

Achromatomaly

31.7144, 32.3722, 33.8551

CSS Examples

Text

The CSS property to change the color of the text to XYZ 32.9233, 31.8797, 30.8037 is called "color". The color property can be set on classes, ids or directly on the HTML element.

This example shows how text in the color `rgb(174, 147, 144)` looks like.

```
.text, #text, p{  
    color:rgb(174, 147, 144)  
}
```

If you want to add a text shadow in that color use the text-shadow property, you can generate a text shadow directly with our [CSS Text Shadow Generator](#).

Here you see how black text with a 4 pixel rgb(174, 147, 144) colored shadow looks like.

```
.shadow{ text-shadow: 4px 4px 2px rgb(174, 147, 144) }
```

Border

The CSS property to change the border of an element to XYZ 32.9233, 31.8797, 30.8037 is called "border". The border property can be set on classes, ids or directly on the HTML element.

This example shows the color as border, it can be applied via the CSS property "border" or "border-color".

```
.border, #border, table{ border:4px solid rgb(174, 147, 144) }
```


If only the border color should be changed use the property `border-color`.

```
.border{ border-color:rgb(174, 147, 144) }
```

If you want to add a box shadow in that color use:

Here you see how a box with a 4 pixel `rgb(174, 147, 144)` colored shadow looks like.

```
.boxshadow{ -moz-box-shadow:4px 4px 4px  
4px rgb(174, 147, 144); -webkit-box-  
shadow:4px 4px 4px 4px rgb(174, 147, 144);  
box-shadow:4px 4px 4px 4px rgb(174, 147,  
144) }
```

Background

The CSS property to change the background color of an element to XYZ 32.9233, 31.8797, 30.8037 is called "background". The background property can be set on classes, ids or directly on the HTML element.

```
.background, #background, body{  
background: rgb(174, 147, 144) }
```

If only the background color should be changed can be used:

```
.background{ background-color: rgb(174,  
147, 144) }
```

This example shows the color as background, it is applied via the CSS property "background".

To optimize and compress your CSS code, you can use our [online CSS compressor and optimizer](#) based on csstidy. If you want to create a linear or radial gradient as background or border, check our [CSS Gradient Generator](#).

Hey! You found this booklet interesting? Support Converting Colors with the new Membership Option!

The pro membership hides all ads, plus gives you double the colors in the color bucket, and more awesome pro features!

[Learn more, Memberships starting at \\$2.50/m!](#)

**Follow me
on Twitter!**

@ConvertingColor