

Converting Colors

XYZ(32.9900, 29.0086, 29.0979)

Have a look what the booklet for
XYZ(32.9900, 29.0086, 29.0979)
contains.

XYZ(33.1000, 29.1636, 29.0839)	3
<i>Conversions</i>	4
<i>Details</i>	6
<i>Harmonies</i>	12
<i>Previews</i>	24
<i>Color Blindness Simulation</i>	28
<i>CSS Examples</i>	31

Color

**XYZ(33.1000, 29.1636,
29.0839)**

Conversions

Conversions Part 1

Format	Color
Hex	B8868D
RGB	184, 134, 141
RGB Percent	72%, 53%, 55%
CMY	0.2784, 0.4745, 0.4471
CMYK	0.00, 0.27, 0.23, 0.28
HSL	352°, 26%, 62%
HSV	352°, 27%, 72%
XYZ	33.1000, 29.1636, 29.0839
YIQ	149.7480, 27.5530, 12.7770

Conversions

Conversions Part 2

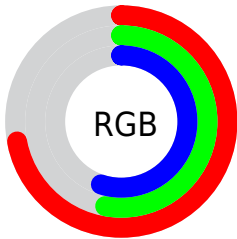
Format	Color
RYB	184, 134, 141
Decimal	12093069
CIELab	60.93, 20.20, 3.83
CIElCh	61, 20.559, 10.728
Yxy	29.1636, 0.3624, 0.3193
Android (android.graphics.Color)	4290283149 (0xFFB8868D)
YUV	149.7480, -4.3128, 30.0390
Hunter-Lab	54.0033, 14.9013, 5.8713

Details

The XYZ color **33.1000, 29.1636, 29.0839** is a light color, and the websafe version is hex **CC9999**. A complement of this color would be **34.9090, 42.5244, 47.9652**, and the grayscale version is **28.8928, 30.3975, 33.1029**.

A 20% lighter version of the original color is **63.8963, 58.1816, 59.4922**, and **14.2646, 11.8418, 11.4314** is the 20% darker color. If you saturate the color by 10%, you get **29.6801, 24.0753, 22.5437**, and if you desaturate by 10%, it is **37.1323, 35.2068, 36.6590**.

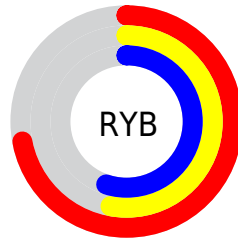
Distribution



Red (72%)

Green (53%)

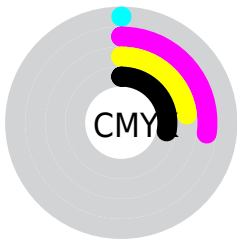
Blue (55%)



Red (72%)

Yellow (53%)

Blue (55%)

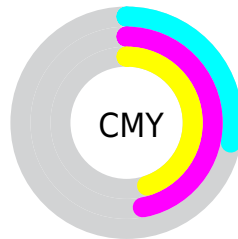


Cyan (0%)

Magenta (27%)

Yellow (23%)

Black (28%)



Cyan (28%)


Magenta (47%)


Yellow (45%)

Brightness & Saturation Gradients


These gradients show how the XYZ color 33.1000, 29.1636, 29.0839 changes by changing the brightness by 10 percent. The first figure shows a shift by +10% for each color and the second figure -10%.


Similar to the brightness gradients but the following saturation gradients show a change of the XYZ color 33.1000, 29.1636, 29.0839 by changing the saturation by 10% instead.


 33.1000, 29.1636,
29.0839


 33.1000, 29.1636,
29.0839


307.7571,
297.9861, 311.6839


 22.3627, 19.2046,
18.8982


 63.8853, 58.3369,
59.2541

 14.2417, 11.8182,
11.4207


 84.6639, 78.3200,
80.0757

 8.3718, 6.6200,
6.2328


 109.5203,
102.4133, 105.2797

 4.3876, 3.2256,
2.9161

138.8199,
131.0012, 135.2846

 1.9236, 1.2506,
1.0519

172.9281,
164.4680, 170.5089

 0.5905, 0.1025,
0.0000

212.2101,

 0.0000, 0.0000,

203.1981, 211.3712

0.0000

257.0313,
247.5760, 258.2900

■ 33.1000, 29.1636,
29.0839

■ 33.1000, 29.1636,
29.0839

■ 29.6801, 24.0753,
22.5437

■ 37.1323, 35.2068,
36.6590

■ 26.8401, 19.8893,
16.9916

■ 41.8024, 42.2461,
45.3095

■ 24.5483, 16.5538,
12.3798

■ 47.1375, 50.3251,
55.0759

■ 22.7688, 14.0104,
8.6558

■ 53.1622, 59.4837,
65.9961

■ 21.4615, 12.1931,
5.7619

■ 59.9000, 69.7597,
78.1060

■ 20.5800, 11.0251,
3.6334

■ 67.3732, 81.1890,
91.4402

■ 20.0610, 10.3983,
2.1932

■ 73.0626, 88.7245,
105.1848

■ 19.9510, 10.2639,
1.8923

■ 73.5773, 88.9304,
107.8951

Harmonies

Analogous

The Analogous color harmony consists of three colors that are next to each other on the color wheel.



32.8767, 29.1636, 36.8815



33.1000, 29.1636, 29.0839



31.8130, 29.1636, 23.0609

Triad

The Triadic color harmony groups three colors that are evenly spaced from another and form a triangle on the color wheel.



33.1000, 29.1636, 29.0839



24.4892, 29.1636, 21.8269



26.0520, 29.1636, 47.8326

Complementary

The Complementary color scheme is a pair of colors which are on the opposite of each other on the color wheel.



33.1000, 29.1636, 29.0839



34.9090, 42.5244, 47.9652

Split Complementary

Split-complementary colors differ from the complementary color scheme. The scheme consists of three colors, the original color and two neighbors of the complement color.



23.9925, 29.1636, 42.3964



33.1000, 29.1636, 29.0839



23.1313, 29.1636, 27.1256

Square

The Square scheme is like the rectangle color scheme, but the four colors are evenly spaced on the color wheel.



33.1000, 29.1636, 29.0839



26.7703, 29.1636, 19.3431



22.9555, 29.1636, 34.5831



28.6901, 29.1636, 48.5847

Rectangle

The Rectangle color scheme consists of four colors that form a rectangle on the color wheel.



33.1000, 29.1636, 29.0839



30.3174, 29.1636, 20.5363



22.9555, 29.1636, 34.5831



25.2737, 29.1636, 46.4556

Sweetspot

The Sweet Spot groups the original color and five complimentary colors.



33.1008, 29.1650, 29.0845



74.9116, 75.2736, 80.5398



35.1955, 29.8008, 49.2448



15.8629, 15.7949, 16.8342



88.6918, 93.3107, 101.6153



17.8044, 18.7317, 20.3988

Same Dimension

The Same Dimension uses a secret algorithm to generate beautiful new colors.



33.1008, 29.1650, 29.0845



55.9229, 46.7884, 44.9467



35.2184, 34.2073, 27.3023



9.0544, 9.0321, 9.6341



13.7660, 7.0801, 1.3884



0.5018, 0.2562, 0.1357

Inverse Universe

The Inverse Universe completely reimagines the original color for something new.



33.1008, 29.1650, 29.0845



55.9229, 46.7884, 44.9467



32.2117, 35.9847, 50.5957



9.0544, 9.0321, 9.6341



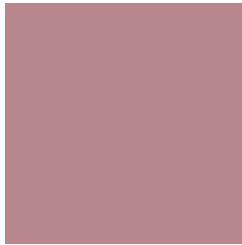
13.7660, 7.0801, 1.3884



0.5018, 0.2562, 0.1357

Previews

White Background



This preview shows how the XYZ color 33.1000, 29.1636, 29.0839 looks on a white background.

Color Contrast Check

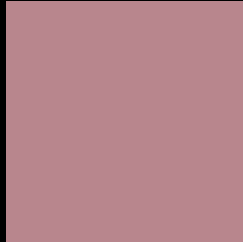
Large Text (above 18pt) WCAG AA ✓ Pass

Any Text WCAG AA ✗ Fail

Large Text (above 18pt) WCAG AAA ✗ Fail

Any Text WCAG AAA ✗ Fail

Black Background



This preview shows how the XYZ color 33.1000, 29.1636, 29.0839 looks on a black background.

Color Contrast Check

Large Text (above 18pt) WCAG AA ✓ Pass

Any Text WCAG AA ✓ Pass

Large Text (above 18pt) WCAG AAA ✓ Pass

Any Text WCAG AAA × Fail

If you want to check with other color combinations, try the [Color Contrast Checker](#).

XYZ 33.1000, 29.1636, 29.0839

Background



This preview shows how black text looks on a background with the XYZ color 33.1000, 29.1636, 29.0839.



This preview shows how white text looks on a background with the XYZ color 33.1000, 29.1636,

Color Blindness Simulation

Color vision deficiency is a very complex topic, and I could not describe the different causes any better than Wikipedia does, so if you want to learn more, you should check out their [article about color blindness](#).

Dichromacy



Original Color

33.1000, 29.1636, 29.0839

Protanopia

28.3567, 29.4896, 32.2145

Deuteranopia

29.6430, 29.1026, 28.4811



Tritanopia

33.3263, 29.2542, 30.2757

Trichromacy



Original Color

33.1000, 29.1636, 29.0839

Protanomaly

29.6841, 29.0717, 30.8349

Deuteranomaly

30.7608, 29.0166, 28.7904

Tritanomaly

33.2502, 29.2237, 29.8749

Monochromacy



Original Color

33.1000, 29.1636, 29.0839

Achromatopsia

28.9890, 30.4987, 33.2131

Achromatomaly

30.1400, 29.7345, 31.7545

CSS Examples

Text

The CSS property to change the color of the text to XYZ 33.1000, 29.1636, 29.0839 is called "color". The color property can be set on classes, ids or directly on the HTML element.

This example shows how text in the color `rgb(184, 134, 141)` looks like.

```
.text, #text, p{  
    color:rgb(184, 134, 141)  
}
```

If you want to add a text shadow in that color use the text-shadow property, you can generate a text shadow directly with our [CSS Text Shadow Generator](#).

Here you see how black text with a 4 pixel rgb(184, 134, 141) colored shadow looks like.

```
.shadow{ text-shadow: 4px 4px 2px rgb(184, 134, 141) }
```

Border

The CSS property to change the border of an element to XYZ 33.1000, 29.1636, 29.0839 is called "border". The border property can be set on classes, ids or directly on the HTML element.

This example shows the color as border, it can be applied via the CSS property "border" or "border-color".

```
.border, #border, table{ border:4px solid rgb(184, 134, 141) }
```


If only the border color should be changed use the property `border-color`.

```
.border{ border-color:rgb(184, 134, 141) }
```

If you want to add a box shadow in that color use:

Here you see how a box with a 4 pixel `rgb(184, 134, 141)` colored shadow looks like.

```
.boxshadow{ -moz-box-shadow:4px 4px 4px  
4px rgb(184, 134, 141); -webkit-box-  
shadow:4px 4px 4px 4px rgb(184, 134, 141);  
box-shadow:4px 4px 4px 4px rgb(184, 134,  
141) }
```

Background

The CSS property to change the background color of an element to XYZ 33.1000, 29.1636, 29.0839 is called "background". The background property can be set on classes, ids or directly on the HTML element.

```
.background, #background, body{  
background: rgb(184, 134, 141) }
```

If only the background color should be changed can be used:

```
.background{ background-color: rgb(184,  
134, 141) }
```

This example shows the color as background, it is applied via the CSS property "background".

To optimize and compress your CSS code, you can use our [online CSS compressor and optimizer](#) based on csstidy. If you want to create a linear or radial gradient as background or border, check our [CSS Gradient Generator](#).

Hey! You found this booklet interesting? Support Converting Colors with the new Membership Option!

The pro membership hides all ads, plus gives you double the colors in the color bucket, and more awesome pro features!

[Learn more, Memberships starting at \\$2.50/m!](#)

**Follow me
on Twitter!**

@ConvertingColor