

Converting Colors

XYZ(32.9955, 29.0906, 26.2843)

Have a look what the booklet for
XYZ(32.9955, 29.0906, 26.2843)
contains.

XYZ(33.0779, 29.2105, 26.4491)	3
<i>Conversions</i>	4
<i>Details</i>	6
<i>Harmonies</i>	12
<i>Previews</i>	24
<i>Color Blindness Simulation</i>	28
<i>CSS Examples</i>	31

Color

**XYZ(33.0779, 29.2105,
26.4491)**

Conversions

Conversions Part 1

Format	Color
Hex	BA8686
RGB	186, 134, 134
RGB Percent	73%, 53%, 53%
CMY	0.2706, 0.4745, 0.4745
CMYK	0.00, 0.28, 0.28, 0.27
HSL	0°, 27%, 63%
HSV	0°, 28%, 73%
XYZ	33.0779, 29.2105, 26.4491
YIQ	149.5480, 30.9920, 11.0240

Conversions

Conversions Part 2

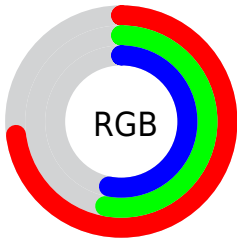
Format	Color
R _Y B	186, 134, 134
Decimal	12224134
CIE Lab	60.97, 19.94, 7.91
CIE LCh	61, 21.456, 21.638
Yxy	29.2105, 0.3728, 0.3292
Android (android.graphics.Color)	4290414214 (0xFFBA8686)
YUV	149.5480, -7.6652, 31.9684
Hunter-Lab	54.0467, 14.6645, 8.8177

Details

The XYZ color **33.0779, 29.2105, 26.4491** is a light color, and the websafe version is hex **CC9999**. A complement of this color would be **36.2529, 43.7302, 52.9846**, and the grayscale version is **28.8209, 30.3218, 33.0205**.

A 20% lighter version of the original color is **63.7021, 58.1832, 54.8867**, and **14.2863, 11.8863, 9.9288** is the 20% darker color. If you saturate the color by 10%, you get **29.5446, 24.0404, 19.4240**, and if you desaturate by 10%, it is **37.2931, 35.3787, 34.8278**.

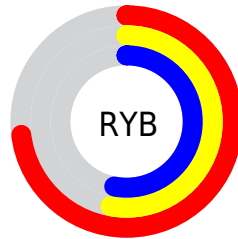
Distribution



Red (73%)

Green (53%)

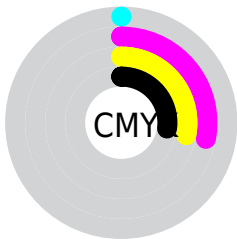
Blue (53%)



Red (73%)

Yellow (53%)

Blue (53%)

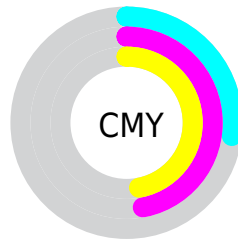


Cyan (0%)

Magenta (28%)

Yellow (28%)

Black (27%)



Cyan (27%)


Magenta (47%)


Yellow (47%)

Brightness & Saturation Gradients


These gradients show how the XYZ color 33.0779, 29.2105, 26.4491 changes by changing the brightness by 10 percent. The first figure shows a shift by +10% for each color and the second figure -10%.


Similar to the brightness gradients but the following saturation gradients show a change of the XYZ color 33.0779, 29.2105, 26.4491 by changing the saturation by 10% instead.


 33.0779, 29.2105,
26.4491


 33.0779, 29.2105,
26.4491


307.6594,
298.2069, 298.6551


 22.3456, 19.2401,
16.9311


 63.8510, 58.4114,
54.9915

 14.2291, 11.8439,
10.0240


 84.6226, 78.4106,
74.8531

 8.3630, 6.6375,
5.3090


 109.4713,
102.5217, 98.9996

 4.3818, 3.2364,
2.3678

138.7625,
131.1288, 127.8495

 1.9203, 1.2564,
0.7688

172.8615,
164.6165, 161.8215

 0.5886, 0.1070,
0.0000

212.1338,

 0.0000, 0.0000,

203.3692, 201.3341

0.0000

256.9446,
247.7712, 246.8058

■ 33.0779, 29.2105,
26.4491

■ 33.0779, 29.2105,
26.4491

■ 29.5446, 24.0404,
19.4240

■ 37.2931, 35.3787,
34.8278

■ 26.6551, 19.8123,
13.6800

■ 42.2208, 42.5894,
44.6240

■ 24.3714, 16.4705,
9.1402

■ 47.8927, 50.8889,
55.8997

■ 22.6504, 13.9521,
5.7191

■ 54.3379, 60.3200,
68.7127

■ 21.4434, 12.1859,
3.3198

■ 61.5838, 70.9227,
83.1177

■ 20.6934, 11.0883,
1.8291

■ 69.6567, 82.7354,
99.1666

■ 20.3120, 10.5303,
1.0711

■ 74.0598, 89.1792,
107.9177

■ 20.2499, 10.4394,
0.9477

Harmonies

Analogous

The Analogous color harmony consists of three colors that are next to each other on the color wheel.



33.4415, 29.2105, 34.1020



33.0779, 29.2105, 26.4491



31.2429, 29.2105, 21.1775

Triad

The Triadic color harmony groups three colors that are evenly spaced from another and form a triangle on the color wheel.



33.0779, 29.2105, 26.4491



23.7505, 29.2105, 23.1593



26.9876, 29.2105, 49.6402

Complementary

The Complementary color scheme is a pair of colors which are on the opposite of each other on the color wheel.



33.0779, 29.2105, 26.4491



36.2529, 43.7302, 52.9846

Split Complementary

Split-complementary colors differ from the complementary color scheme. The scheme consists of three colors, the original color and two neighbors of the complement color.



24.5529, 29.2105, 45.5001



33.0779, 29.2105, 26.4491



22.7680, 29.2105, 29.6140

Square

The Square scheme is like the rectangle color scheme, but the four colors are evenly spaced on the color wheel.



33.0779, 29.2105, 26.4491



25.8244, 29.2105, 19.5124



23.0515, 29.2105, 37.8397



29.7977, 29.2105, 48.4085

Rectangle

The Rectangle color scheme consists of four colors that form a rectangle on the color wheel.



33.0779, 29.2105, 26.4491



29.4955, 29.2105, 19.2954



23.0515, 29.2105, 37.8397



26.1011, 29.2105, 48.8087

Sweetspot

The Sweet Spot groups the original color and five complimentary colors.



33.0787, 29.2119, 26.4497



76.3589, 76.9488, 80.5482



37.6380, 31.0349, 50.4612



16.4993, 16.4827, 17.1094



90.7827, 95.5105, 104.0109



18.6292, 19.5994, 21.3438

Same Dimension

The Same Dimension uses a secret algorithm to generate beautiful new colors.



33.0787, 29.2119, 26.4497



55.5907, 46.5592, 39.2619



37.1239, 37.3023, 27.7981



9.0047, 9.0123, 9.3719



13.6235, 7.0233, 0.6376



0.4803, 0.2476, 0.0225

Inverse Universe

The Inverse Universe completely reimagines the original color for something new.



36.2529, 43.7302, 52.9846



62.3638, 77.5375, 95.8807



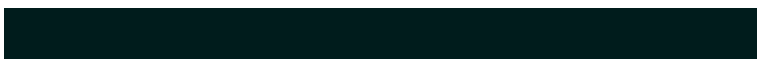
31.2656, 33.7555, 51.3222



9.2667, 10.2106, 11.5619



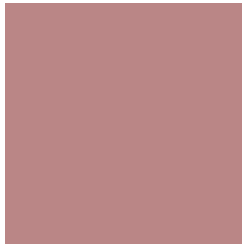
17.7741, 26.0078, 35.3363



0.6266, 0.9169, 1.2457

Previews

White Background



This preview shows how the XYZ color 33.0779, 29.2105, 26.4491 looks on a white background.

Color Contrast Check

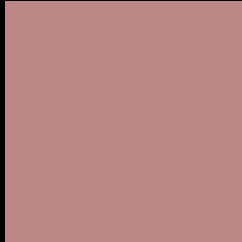
Large Text (above 18pt) WCAG AA ✓ Pass

Any Text WCAG AA × Fail

Large Text (above 18pt) WCAG AAA × Fail

Any Text WCAG AAA × Fail

Black Background



This preview shows how the XYZ color 33.0779, 29.2105, 26.4491 looks on a black background.

Color Contrast Check

Large Text (above 18pt) WCAG AA ✓ Pass

Any Text WCAG AA ✓ Pass

Large Text (above 18pt) WCAG AAA ✓ Pass

Any Text WCAG AAA × Fail

If you want to check with other color combinations, try the [Color Contrast Checker](#).

XYZ 33.0779, 29.2105, 26.4491

Background



This preview shows how black text looks on a background with the XYZ color 33.0779, 29.2105, 26.4491.



This preview shows how white text looks on a background with the XYZ color 33.0779, 29.2105,

Color Blindness Simulation

Color vision deficiency is a very complex topic, and I could not describe the different causes any better than Wikipedia does, so if you want to learn more, you should check out their [article about color blindness](#).

Dichromacy



Original Color

33.0779, 29.2105, 26.4491

Protanopia

28.1903, 29.4659, 29.4010

Deuteranopia

29.7742, 29.2274, 25.9020



Tritanopia

33.8390, 29.3230, 29.8630

Trichromacy



Original Color

33.0779, 29.2105, 26.4491

Protanomaly

29.5703, 29.0735, 28.0980

Deuteranomaly

30.9218, 29.1574, 26.1885

Tritanomaly

33.6147, 29.2333, 28.6818

Monochromacy



Original Color

33.0779, 29.2105, 26.4491

Achromatopsia

28.9890, 30.4987, 33.2131

Achromatomaly

30.1116, 29.7467, 30.5402

CSS Examples

Text

The CSS property to change the color of the text to XYZ 33.0779, 29.2105, 26.4491 is called "color". The color property can be set on classes, ids or directly on the HTML element.

This example shows how text in the color `rgb(186, 134, 134)` looks like.

```
.text, #text, p{  
    color:rgb(186, 134, 134)  
}
```

If you want to add a text shadow in that color use the text-shadow property, you can generate a text shadow directly with our [CSS Text Shadow Generator](#).

Here you see how black text with a 4 pixel rgb(186, 134, 134) colored shadow looks like.

```
.shadow{ text-shadow: 4px 4px 2px rgb(186, 134, 134) }
```

Border

The CSS property to change the border of an element to XYZ 33.0779, 29.2105, 26.4491 is called "border". The border property can be set on classes, ids or directly on the HTML element.

This example shows the color as border, it can be applied via the CSS property "border" or "border-color".

```
.border, #border, table{ border:4px solid rgb(186, 134, 134) }
```


If only the border color should be changed use the property `border-color`.

```
.border{ border-color:rgb(186, 134, 134) }
```

If you want to add a box shadow in that color use:

Here you see how a box with a 4 pixel `rgb(186, 134, 134)` colored shadow looks like.

```
.boxshadow{ -moz-box-shadow:4px 4px 4px  
4px rgb(186, 134, 134); -webkit-box-  
shadow:4px 4px 4px 4px rgb(186, 134, 134);  
box-shadow:4px 4px 4px 4px rgb(186, 134,  
134) }
```

Background

The CSS property to change the background color of an element to XYZ 33.0779, 29.2105, 26.4491 is called "background". The background property can be set on classes, ids or directly on the HTML element.

```
.background, #background, body{  
background: rgb(186, 134, 134) }
```

If only the background color should be changed can be used:

```
.background{ background-color: rgb(186,  
134, 134) }
```

This example shows the color as background, it is applied via the CSS property "background".

To optimize and compress your CSS code, you can use our [online CSS compressor and optimizer](#) based on csstidy. If you want to create a linear or radial gradient as background or border, check our [CSS Gradient Generator](#).

Hey! You found this booklet interesting? Support Converting Colors with the new Membership Option!

The pro membership hides all ads, plus gives you double the colors in the color bucket, and more awesome pro features!

[Learn more, Memberships starting at \\$2.50/m!](#)

**Follow me
on Twitter!**

@ConvertingColor