

Converting Colors

XYZ(33.0821, 29.9468, 27.9464)

Have a look what the booklet for
XYZ(33.0821, 29.9468, 27.9464)
contains.

XYZ(33.2044, 30.0792, 28.1006)	3
<i>Conversions</i>	4
<i>Details</i>	6
<i>Harmonies</i>	12
<i>Previews</i>	24
<i>Color Blindness Simulation</i>	28
<i>CSS Examples</i>	31

Color

**XYZ(33.2044, 30.0792,
28.1006)**

Conversions

Conversions Part 1

Format	Color
Hex	B78A8A
RGB	183, 138, 138
RGB Percent	72%, 54%, 54%
CMY	0.2824, 0.4588, 0.4588
CMYK	0.00, 0.25, 0.25, 0.28
HSL	0°, 24%, 63%
HSV	0°, 25%, 72%
XYZ	33.2044, 30.0792, 28.1006
YIQ	151.4550, 26.8200, 9.5400

Conversions

Conversions Part 2

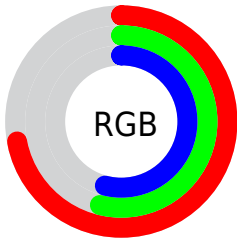
Format	Color
R_{YB}	183, 138, 138
Decimal	12028554
CIE _{Lab}	61.72, 17.13, 6.67
CIE _{LCh}	62, 18.387, 21.266
Yxy	30.0792, 0.3633, 0.3292
Android (android.graphics.Color)	4290218634 (0xFFB78A8A)
YUV	151.4550, -6.6333, 27.6650
Hunter-Lab	54.8445, 12.0910, 8.0128

Details

The XYZ color **33.2044, 30.0792, 28.1006** is a light color, and the websafe version is hex **CC9999**. A complement of this color would be **35.9616, 42.6881, 51.1443**, and the grayscale version is **29.6306, 31.1737, 33.9482**.

A 20% lighter version of the original color is **64.1888, 59.9861, 57.4856**, and **14.3044, 12.3512, 10.8626** is the 20% darker color. If you saturate the color by 10%, you get **29.5818, 24.7784, 20.8979**, and if you desaturate by 10%, it is **37.4943, 36.3567, 36.6278**.

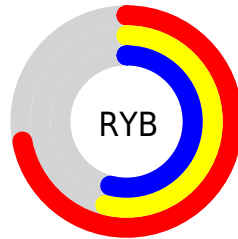
Distribution



Red (72%)

Green (54%)

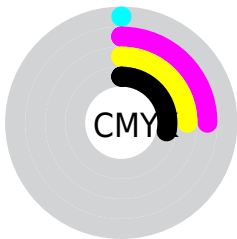
Blue (54%)



Red (72%)

Yellow (54%)

Blue (54%)

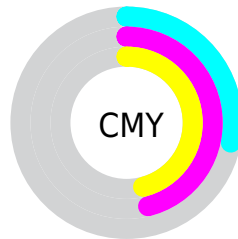


Cyan (0%)

Magenta (25%)

Yellow (25%)

Black (28%)



Cyan (28%)

Magenta (46%)


Yellow (46%)

Brightness & Saturation Gradients


These gradients show how the XYZ color 33.2044, 30.0792, 28.1006 changes by changing the brightness by 10 percent. The first figure shows a shift by +10% for each color and the second figure -10%.


Similar to the brightness gradients but the following saturation gradients show a change of the XYZ color 33.2044, 30.0792, 28.1006 by changing the saturation by 10% instead.

 33.2044, 30.0792,
28.1006


 33.2044, 30.0792,
28.1006


308.2185,
302.2734, 306.8744


 22.4431, 19.8987,
18.1618


 64.0471, 59.7874,
57.6700

 14.3012, 12.3214,
10.8956


 84.8591, 80.0839,
78.1378

 8.4136, 6.9630,
5.8834


 109.7521,
104.5212, 102.9522

 4.4147, 3.4390,
2.7067

139.0913,
133.4837, 132.5320

 1.9393, 1.3650,
0.9468

173.2423,
167.3558, 167.2955

 0.5995, 0.1907,
0.0000

212.5702,

 0.0000, 0.0000,

206.5218, 207.6614

0.0000

257.4405,
251.3663, 254.0482

■ 33.2044, 30.0792,
28.1006

■ 33.2044, 30.0792,
28.1006

■ 29.5818, 24.7784,
20.8979

■ 37.4943, 36.3567,
36.6278

■ 26.5905, 20.4014,
14.9516

■ 42.4799, 43.6520,
46.5392

■ 24.1954, 16.8965,
10.1902

■ 48.1912, 52.0092,
57.8932

■ 22.3563, 14.2055,
6.5345

■ 54.6555, 61.4682,
70.7443

■ 21.0287, 12.2627,
3.8954

■ 61.8989, 72.0671,
85.1443

■ 20.1609, 10.9928,
2.1705

■ 69.9460, 83.8422,
101.1421

■ 19.6904, 10.3043,
1.2354

■ 73.3386, 88.8073,
107.8839

■ 19.5287, 10.0676,
0.9140

Harmonies

Analogous

The Analogous color harmony consists of three colors that are next to each other on the color wheel.



33.4991, 30.0792, 34.8411



33.2044, 30.0792, 28.1006



31.6371, 30.0792, 23.3201

Triad

The Triadic color harmony groups three colors that are evenly spaced from another and form a triangle on the color wheel.



33.2044, 30.0792, 28.1006



25.0723, 30.0792, 25.0192



27.8806, 30.0792, 47.9653

Complementary

The Complementary color scheme is a pair of colors which are on the opposite of each other on the color wheel.



33.2044, 30.0792, 28.1006



35.9616, 42.6881, 51.1443

Split Complementary

Split-complementary colors differ from the complementary color scheme. The scheme consists of three colors, the original color and two neighbors of the complement color.



25.7440, 30.0792, 44.4334



33.2044, 30.0792, 28.1006



24.1844, 30.0792, 30.7465

Square

The Square scheme is like the rectangle color scheme, but the four colors are evenly spaced on the color wheel.



33.2044, 30.0792, 28.1006



26.9157, 30.0792, 21.7256



24.4231, 30.0792, 37.8884



30.3310, 30.0792, 46.9896

Rectangle

The Rectangle color scheme consists of four colors that form a rectangle on the color wheel.



33.2044, 30.0792, 28.1006



30.1280, 30.0792, 21.5709



24.4231, 30.0792, 37.8884



27.1040, 30.0792, 47.2494

Sweetspot

The Sweet Spot groups the original color and five complimentary colors.



33.2052, 30.0806, 28.1012



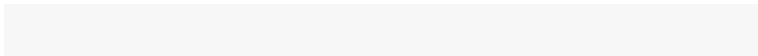
73.7043, 74.7028, 78.6268



37.1645, 31.6636, 48.9529



16.1580, 16.3225, 17.1257



88.6918, 93.3107, 101.6153



17.8044, 18.7317, 20.3988

Same Dimension

The Same Dimension uses a secret algorithm to generate beautiful new colors.



33.2052, 30.0806, 28.1012



55.4966, 48.0599, 42.4303



36.7739, 37.2180, 29.2908



9.0047, 9.0123, 9.3719



13.6235, 7.0234, 0.6376



0.4803, 0.2476, 0.0225

Inverse Universe

The Inverse Universe completely reimagines the original color for something new.



35.9616, 42.6881, 51.1443



61.3610, 74.8830, 91.4555



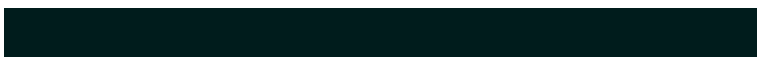
31.6865, 34.1379, 49.7193



9.2667, 10.2105, 11.5619



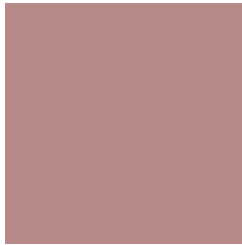
17.7739, 26.0074, 35.3362



0.6266, 0.9169, 1.2457

Previews

White Background



This preview shows how the XYZ color 33.2044, 30.0792, 28.1006 looks on a white background.

Color Contrast Check

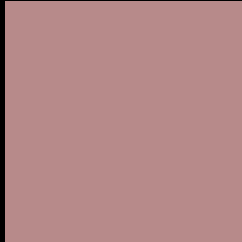
Large Text (above 18pt) WCAG AA × Fail

Any Text WCAG AA × Fail

Large Text (above 18pt) WCAG AAA × Fail

Any Text WCAG AAA × Fail

Black Background



This preview shows how the XYZ color 33.2044, 30.0792, 28.1006 looks on a black background.

Color Contrast Check

Large Text (above 18pt) WCAG AA ✓ Pass

Any Text WCAG AA ✓ Pass

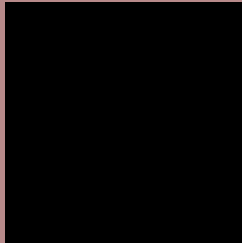
Large Text (above 18pt) WCAG AAA ✓ Pass

Any Text WCAG AAA ✓ Pass

If you want to check with other color combinations, try the [Color Contrast Checker](#).

XYZ 33.2044, 30.0792, 28.1006

Background



This preview shows how black text looks on a background with the XYZ color 33.2044, 30.0792, 28.1006.



This preview shows how white text looks on a background with the XYZ color 33.2044, 30.0792,

Color Blindness Simulation

Color vision deficiency is a very complex topic, and I could not describe the different causes any better than Wikipedia does, so if you want to learn more, you should check out their [article about color blindness](#).

Dichromacy



Original Color

33.2044, 30.0792, 28.1006

Protanopia

28.9184, 30.2808, 30.7062

Deuteranopia

30.6371, 30.0775, 27.8577



Tritanopia

33.9793, 30.1883, 31.6398

Trichromacy



Original Color

33.2044, 30.0792, 28.1006

Protanomaly

30.3177, 30.0963, 29.8024

Deuteranomaly

31.4219, 30.0364, 27.8084

Tritanomaly

33.7469, 30.0953, 30.4159

Monochromacy



Original Color

33.2044, 30.0792, 28.1006

Achromatopsia

29.4150, 30.9469, 33.7012

Achromatomaly

30.5714, 30.4196, 31.4544

CSS Examples

Text

The CSS property to change the color of the text to XYZ 33.2044, 30.0792, 28.1006 is called "color". The color property can be set on classes, ids or directly on the HTML element.

This example shows how text in the color `rgb(183, 138, 138)` looks like.

```
.text, #text, p{  
    color:rgb(183, 138, 138)  
}
```

If you want to add a text shadow in that color use the text-shadow property, you can generate a text shadow directly with our [CSS Text Shadow Generator](#).

Here you see how black text with a 4 pixel rgb(183, 138, 138) colored shadow looks like.

```
.shadow{ text-shadow: 4px 4px 2px rgb(183, 138, 138) }
```

Border

The CSS property to change the border of an element to XYZ 33.2044, 30.0792, 28.1006 is called "border". The border property can be set on classes, ids or directly on the HTML element.

This example shows the color as border, it can be applied via the CSS property "border" or "border-color".

```
.border, #border, table{ border:4px solid rgb(183, 138, 138) }
```


If only the border color should be changed use the property `border-color`.

```
.border{ border-color:rgb(183, 138, 138) }
```

If you want to add a box shadow in that color use:

Here you see how a box with a 4 pixel `rgb(183, 138, 138)` colored shadow looks like.

```
.boxshadow{ -moz-box-shadow:4px 4px 4px  
4px rgb(183, 138, 138); -webkit-box-  
shadow:4px 4px 4px 4px rgb(183, 138, 138);  
box-shadow:4px 4px 4px 4px rgb(183, 138,  
138) }
```

Background

The CSS property to change the background color of an element to XYZ 33.2044, 30.0792, 28.1006 is called "background". The background property can be set on classes, ids or directly on the HTML element.

```
.background, #background, body{  
background: rgb(183, 138, 138) }
```

If only the background color should be changed can be used:

```
.background{ background-color: rgb(183,  
138, 138) }
```

This example shows the color as background, it is applied via the CSS property "background".

To optimize and compress your CSS code, you can use our [online CSS compressor and optimizer](#) based on csstidy. If you want to create a linear or radial gradient as background or border, check our [CSS Gradient Generator](#).

Hey! You found this booklet interesting? Support Converting Colors with the new Membership Option!

The pro membership hides all ads, plus gives you double the colors in the color bucket, and more awesome pro features!

[Learn more, Memberships starting at \\$2.50/m!](#)

**Follow me
on Twitter!**

@ConvertingColor