

Converting Colors

XYZ(33.2114, 30.8030, 29.1955)

Have a look what the booklet for
XYZ(33.2114, 30.8030, 29.1955)
contains.

XYZ(33.0809, 30.6465, 28.9828)	3
<i>Conversions</i>	4
<i>Details</i>	6
<i>Harmonies</i>	12
<i>Previews</i>	24
<i>Color Blindness Simulation</i>	28
<i>CSS Examples</i>	31

Color

**XYZ(33.0809, 30.6465,
28.9828)**

Conversions

Conversions Part 1

Format	Color
Hex	B48D8C
RGB	180, 141, 140
RGB Percent	71%, 55%, 55%
CMY	0.2941, 0.4470, 0.4510
CMYK	0.00, 0.22, 0.22, 0.29
HSL	2°, 21%, 63%
HSV	2°, 22%, 71%
XYZ	33.0809, 30.6465, 28.9828
YIQ	152.5470, 23.5650, 7.9570

Conversions

Conversions Part 2

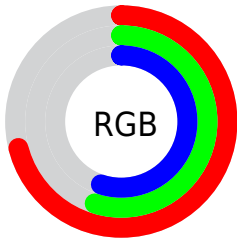
Format	Color
RYB	180, 141, 140
Decimal	11832716
CIELab	62.21, 14.60, 6.19
CIELCh	62, 15.861, 22.960
Yxy	30.6465, 0.3568, 0.3306
Android (android.graphics.Color)	4290022796 (0xFFB48D8C)
YUV	152.5470, -6.1857, 24.0763
Hunter-Lab	55.3593, 9.7870, 7.7108

Details

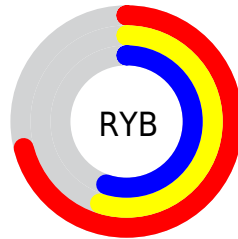
The XYZ color **33.0809, 30.6465, 28.9828** is a light color, and the websafe version is hex **CC9999**. A complement of this color would be **35.1732, 41.1099, 49.2614**, and the grayscale version is **30.1011, 31.6687, 34.4872**.

A 20% lighter version of the original color is **63.7328, 60.7133, 58.8118**, and **14.1907, 12.6560, 11.3678** is the 20% darker color. If you saturate the color by 10%, you get **29.4751, 25.3878, 21.7596**, and if you desaturate by 10%, it is **37.3156, 36.8148, 37.4875**.

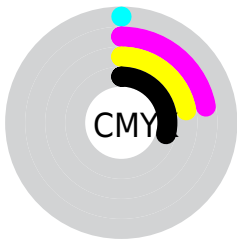
Distribution



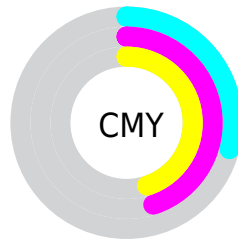
- Red (71%)
- Green (55%)
- Blue (55%)



- Red (71%)
- Yellow (55%)
- Blue (55%)



- Cyan (0%)
- Magenta (22%)
- Yellow (22%)
- Black (29%)





- Cyan (29%)
- Magenta (45%)
- Yellow (45%)

Brightness & Saturation Gradients


These gradients show how the XYZ color 33.0809, 30.6465, 28.9828 changes by changing the brightness by 10 percent. The first figure shows a shift by +10% for each color and the second figure -10%.

Similar to the brightness gradients but the following saturation gradients show a change of the XYZ color 33.0809, 30.6465, 28.9828 by changing the saturation by 10% instead.

 33.0809, 30.6465,
28.9828


 33.0809, 30.6465,
28.9828


307.6727,
304.9064, 311.1922

 22.3480, 20.3298,
18.8223


 63.8556, 60.6831,
59.0916

 14.2308, 12.6350,
11.3665


 84.6282, 81.1718,
79.8771

 8.3642, 7.1777,
6.1966

 109.4779,
105.8199, 105.0412

 4.3826, 3.5735,
2.8943

138.7703,
135.0119, 135.0027

 1.9208, 1.4380,
1.0409

172.8705,
169.1322, 170.1800

 0.5889, 0.2444,
0.0000

212.1441,

 0.0000, 0.0000,

208.5651, 210.9916

0.0000

256.9564,
253.6951, 257.8562

■ 33.0809, 30.6465,
28.9828

■ 33.0809, 30.6465,
28.9828

■ 29.4751, 25.3878,
21.7596

■ 37.3156, 36.8148,
37.4875

■ 26.4657, 20.9918,
15.7539

■ 42.2043, 43.9285,
47.3296

■ 24.0215, 17.4138,
10.8994

■ 47.7742, 52.0264,
58.5638

■ 22.1071, 14.6031,
7.1225

■ 54.0500, 61.1442,
71.2415

■ 20.6833, 12.5038,
4.3411

■ 61.0550, 71.3154,
85.4112

■ 19.7054, 11.0521,
2.4612

■ 68.8118, 82.5723,
101.1194

■ 19.1207, 10.1730,
1.3713

■ 72.6325, 88.4433,
107.8509

■ 18.8715, 9.8014,
0.8972

Harmonies

Analogous

The Analogous color harmony consists of three colors that are next to each other on the color wheel.



33.4028, 30.6465, 34.8329



33.0809, 30.6465, 28.9828



31.6762, 30.6465, 24.8243

Triad

The Triadic color harmony groups three colors that are evenly spaced from another and form a triangle on the color wheel.



33.0809, 30.6465, 28.9828



25.9683, 30.6465, 26.7664



28.6276, 30.6465, 46.4731

Complementary

The Complementary color scheme is a pair of colors which are on the opposite of each other on the color wheel.



33.0809, 30.6465, 28.9828



35.1732, 41.1099, 49.2614

Split Complementary

Split-complementary colors differ from the complementary color scheme. The scheme consists of three colors, the original color and two neighbors of the complement color.



26.7214, 30.6465, 43.6785



33.0809, 30.6465, 28.9828



25.2355, 30.6465, 31.9464

Square

The Square scheme is like the rectangle color scheme, but the four colors are evenly spaced on the color wheel.



33.0809, 30.6465, 28.9828



27.5539, 30.6465, 23.6582



25.5043, 30.6465, 38.1764



30.7621, 30.6465, 45.4282

Rectangle

The Rectangle color scheme consists of four colors that form a rectangle on the color wheel.



33.0809, 30.6465, 28.9828



30.3501, 30.6465, 23.3289



25.5043, 30.6465, 38.1764



27.9403, 30.6465, 45.9411

Sweetspot

The Sweet Spot groups the original color and five complimentary colors.



33.0817, 30.6479, 28.9834



72.0319, 73.1148, 76.7679



36.3712, 31.7281, 47.0322



15.4573, 15.6407, 16.3682



86.6293, 91.1408, 99.2523



17.0014, 17.8868, 19.4787

Same Dimension

The Same Dimension uses a secret algorithm to generate beautiful new colors.



33.0817, 30.6479, 28.9834



56.4185, 50.3727, 45.4065



36.2430, 36.9705, 30.0372



8.5129, 8.5383, 8.8519



13.1785, 6.8556, 0.6287



0.4203, 0.2270, 0.0217

Inverse Universe

The Inverse Universe completely reimagines the original color for something new.



35.1732, 41.1099, 49.2614



60.9306, 72.9461, 89.1632



31.5094, 33.7822, 48.0401



8.7240, 9.5942, 10.8984



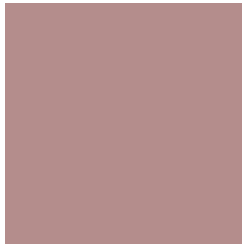
16.5229, 23.8462, 33.8689



0.5256, 0.7617, 1.0676

Previews

White Background



This preview shows how the XYZ color 33.0809, 30.6465, 28.9828 looks on a white background.

Color Contrast Check

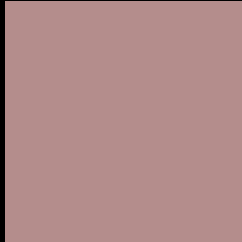
Large Text (above 18pt) WCAG AA × Fail

Any Text WCAG AA × Fail

Large Text (above 18pt) WCAG AAA × Fail

Any Text WCAG AAA × Fail

Black Background



This preview shows how the XYZ color 33.0809, 30.6465, 28.9828 looks on a black background.

Color Contrast Check

Large Text (above 18pt) WCAG AA ✓ Pass

Any Text WCAG AA ✓ Pass

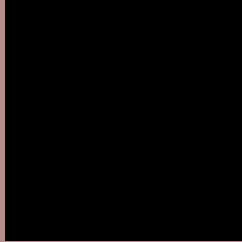
Large Text (above 18pt) WCAG AAA ✓ Pass

Any Text WCAG AAA ✓ Pass

If you want to check with other color combinations, try the [Color Contrast Checker](#).

XYZ 33.0809, 30.6465, 28.9828

Background



This preview shows how black text looks on a background with the XYZ color 33.0809, 30.6465, 28.9828.



This preview shows how white text looks on a background with the XYZ color 33.0809, 30.6465,

Color Blindness Simulation

Color vision deficiency is a very complex topic, and I could not describe the different causes any better than Wikipedia does, so if you want to learn more, you should check out their [article about color blindness](#).

Dichromacy



Original Color

33.0809, 30.6465, 28.9828

Protanopia

29.5347, 30.8256, 31.1813

Deuteranopia

31.1478, 30.5499, 28.6812



Tritanopia

33.7937, 30.4910, 32.9584

Trichromacy



Original Color

33.0809, 30.6465, 28.9828

Protanomaly

30.7015, 30.7431, 30.3025

Deuteranomaly

31.8670, 30.6948, 28.6712

Tritanomaly

33.6224, 30.6552, 31.3391

Monochromacy



Original Color

33.0809, 30.6465, 28.9828

Achromatopsia

30.2779, 31.8547, 34.6897

Achromatomaly

31.1970, 31.4195, 32.4373

CSS Examples

Text

The CSS property to change the color of the text to XYZ 33.0809, 30.6465, 28.9828 is called "color". The color property can be set on classes, ids or directly on the HTML element.

This example shows how text in the color `rgb(180, 141, 140)` looks like.

```
.text, #text, p{  
    color:rgb(180, 141, 140)  
}
```

If you want to add a text shadow in that color use the text-shadow property, you can generate a text shadow directly with our [CSS Text Shadow Generator](#).

Here you see how black text with a 4 pixel rgb(180, 141, 140) colored shadow looks like.

```
.shadow{ text-shadow: 4px 4px 2px rgb(180, 141, 140) }
```

Border

The CSS property to change the border of an element to XYZ 33.0809, 30.6465, 28.9828 is called "border". The border property can be set on classes, ids or directly on the HTML element.

This example shows the color as border, it can be applied via the CSS property "border" or "border-color".

```
.border, #border, table{ border:4px solid rgb(180, 141, 140) }
```


If only the border color should be changed use the property `border-color`.

```
.border{ border-color:rgb(180, 141, 140) }
```

If you want to add a box shadow in that color use:

Here you see how a box with a 4 pixel `rgb(180, 141, 140)` colored shadow looks like.

```
.boxshadow{ -moz-box-shadow:4px 4px 4px  
4px rgb(180, 141, 140); -webkit-box-  
shadow:4px 4px 4px 4px rgb(180, 141, 140);  
box-shadow:4px 4px 4px 4px rgb(180, 141,  
140) }
```

Background

The CSS property to change the background color of an element to XYZ 33.0809, 30.6465, 28.9828 is called "background". The background property can be set on classes, ids or directly on the HTML element.

```
.background, #background, body{  
background: rgb(180, 141, 140) }
```

If only the background color should be changed can be used:

```
.background{ background-color: rgb(180,  
141, 140) }
```

This example shows the color as background, it is applied via the CSS property "background".

To optimize and compress your CSS code, you can use our [online CSS compressor and optimizer](#) based on csstidy. If you want to create a linear or radial gradient as background or border, check our [CSS Gradient Generator](#).

Hey! You found this booklet interesting? Support Converting Colors with the new Membership Option!

The pro membership hides all ads, plus gives you double the colors in the color bucket, and more awesome pro features!

[Learn more, Memberships starting at \\$2.50/m!](#)

**Follow me
on Twitter!**

@ConvertingColor