

Converting Colors

XYZ(33.2306, 31.5425, 17.4062)

Have a look what the booklet for
XYZ(33.2306, 31.5425, 17.4062)
contains.

XYZ(33.2110, 31.6374, 17.4529)	3
<i>Conversions</i>	4
<i>Details</i>	6
<i>Harmonies</i>	12
<i>Previews</i>	24
<i>Color Blindness Simulation</i>	28
<i>CSS Examples</i>	31

Color

**XYZ(33.2110, 31.6374,
17.4529)**

Conversions

Conversions Part 1

Format	Color
Hex	BC9068
RGB	188, 144, 104
RGB Percent	74%, 56%, 41%
CMY	0.2627, 0.4353, 0.5922
CMYK	0.00, 0.23, 0.45, 0.26
HSL	29°, 39%, 57%
HSV	29°, 45%, 74%
XYZ	33.2110, 31.6374, 17.4529
YIQ	152.5960, 39.0640, -3.1120

Conversions

Conversions Part 2

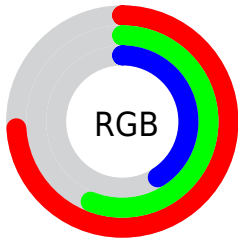
Format	Color
RYB	188, 180, 104
Decimal	12357736
CIELab	63.04, 11.47, 27.64
CIELCh	63, 29.923, 67.460
Yxy	31.6374, 0.4035, 0.3844
Android (android.graphics.Color)	4290547816 (0xFFBC9068)
YUV	152.5960, -23.9578, 31.0493
Hunter-Lab	56.2471, 6.9625, 20.9759

Details

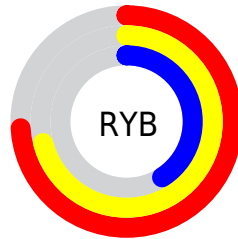
The XYZ color **33.2110, 31.6374, 17.4529** is a dark color, and the websafe version is hex **CC9966**. A complement of this color would be **25.3754, 27.7525, 51.5962**, and the grayscale version is **30.1923, 31.7646, 34.5917**.

A 20% lighter version of the original color is **64.2009, 62.3813, 40.1095**, and **14.3894, 13.2775, 5.5458** is the 20% darker color. If you saturate the color by 10%, you get **30.9337, 28.4445, 12.4963**, and if you desaturate by 10%, it is **35.8329, 35.1787, 23.5753**.

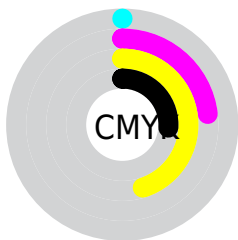
Distribution



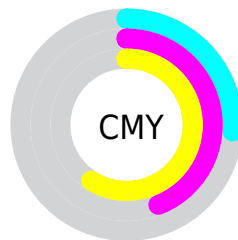
- Red (74%)
- Green (56%)
- Blue (41%)



- Red (74%)
- Yellow (71%)
- Blue (41%)



- Cyan (0%)
- Magenta (23%)
- Yellow (45%)
- Black (26%)





- Cyan (26%)
- Magenta (44%)
- Yellow (59%)

Brightness & Saturation Gradients

These gradients show how the XYZ color 33.2110, 31.6374, 17.4529 changes by changing the brightness by 10 percent. The first figure shows a shift by +10% for each color and the second figure -10%.


Similar to the brightness gradients but the following saturation gradients show a change of the XYZ color 33.2110, 31.6374, 17.4529 by changing the saturation by 10% instead.


 33.2110, 31.6374,
17.4529


 33.2110, 31.6374,
17.4529


308.2476,
309.4642, 249.9007


 22.4481, 21.0847,
10.3926


 64.0573, 62.2422,
39.9041


 14.3050, 13.1859,
5.5510


 84.8714, 83.0631,
56.1321

 8.4162, 7.5567,
2.5097


 109.7667,
108.0755, 76.2530

 4.4164, 3.8126,
0.8453

 139.1085,
137.6638, 100.6854

 1.9403, 1.5693,
0.0000

173.2621,
172.2125, 129.8478

 0.6001, 0.3368,
0.0000

212.5929,

 0.0000, 0.0000,

212.1058, 164.1588

0.0000

257.4663,
257.7282, 204.0369

■ 33.2110, 31.6374,
17.4529

■ 33.2110, 31.6374,
17.4529

■ 30.9337, 28.4445,
12.4963

■ 35.8329, 35.1787,
23.5753

■ 28.9810, 25.5831,
8.6271

■ 38.8131, 39.0754,
30.9312

■ 27.3342, 23.0413,
5.7601

■ 42.1676, 43.3400,
39.5850

■ 25.9711, 20.8047,
3.7964

■ 45.9104, 47.9829,
49.5965

■ 24.8655, 18.8567,
2.6163

■ 50.0548, 53.0139,
61.0214

■ 24.3560, 17.9253,
2.1762

■ 54.6135, 58.4427,
73.9123

■ 59.5984, 64.2783,
88.3192

■ 65.0211, 70.5296,
104.2897

■ 67.8217, 75.9768,
105.6981

Harmonies

Analogous

The Analogous color harmony consists of three colors that are next to each other on the color wheel.



36.8083, 31.6374, 22.4080



33.2110, 31.6374, 17.4529



29.0535, 31.6374, 16.4915

Triad

The Triadic color harmony groups three colors that are evenly spaced from another and form a triangle on the color wheel.



33.2110, 31.6374, 17.4529



22.8787, 31.6374, 37.4784



35.1512, 31.6374, 55.7812

Complementary

The Complementary color scheme is a pair of colors which are on the opposite of each other on the color wheel.



33.2110, 31.6374, 17.4529



25.3754, 27.7525, 51.5962

Split Complementary

Split-complementary colors differ from the complementary color scheme. The scheme consists of three colors, the original color and two neighbors of the complement color.



31.1108, 31.6374, 62.2006



33.2110, 31.6374, 17.4529



24.2095, 31.6374, 50.1735

Square

The Square scheme is like the rectangle color scheme, but the four colors are evenly spaced on the color wheel.



33.2110, 31.6374, 17.4529



23.3301, 31.6374, 26.4610



27.1343, 31.6374, 59.9429



37.9979, 31.6374, 43.8987

Rectangle

The Rectangle color scheme consists of four colors that form a rectangle on the color wheel.



33.2110, 31.6374, 17.4529



26.5629, 31.6374, 17.9812



27.1343, 31.6374, 59.9429



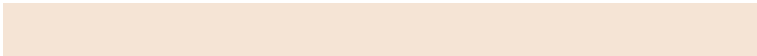
33.8739, 31.6374, 58.7600

Sweetspot

The Sweet Spot groups the original color and five complimentary colors.



33.2118, 31.6389, 17.4535



77.3734, 79.7389, 74.2479



31.0983, 22.7558, 31.1036



16.3317, 16.7623, 15.1583



90.7827, 95.5105, 104.0109



18.6292, 19.5994, 21.3438

Same Dimension

The Same Dimension uses a secret algorithm to generate beautiful new colors.



33.2118, 31.6389, 17.4535



55.9850, 51.4398, 22.4855



40.6286, 46.4725, 19.9258



9.8948, 10.2657, 10.0366



16.6563, 12.3514, 1.5062



0.7180, 0.6148, 0.0808

Inverse Universe

The Inverse Universe completely reimagines the original color for something new.



25.3754, 27.7525, 51.5962



39.9067, 43.4573, 92.5110



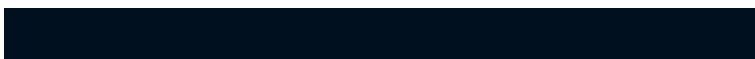
20.0232, 17.0480, 49.8121



9.4188, 10.0299, 12.1118



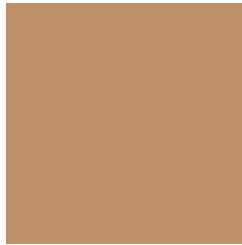
9.2586, 8.6289, 33.5705



0.4278, 0.4682, 1.3367

Previews

White Background



This preview shows how the XYZ color 33.2110, 31.6374, 17.4529 looks on a white background.

Color Contrast Check

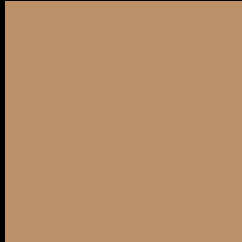
Large Text (above 18pt) WCAG AA × Fail

Any Text WCAG AA × Fail

Large Text (above 18pt) WCAG AAA × Fail

Any Text WCAG AAA × Fail

Black Background



This preview shows how the XYZ color 33.2110, 31.6374, 17.4529 looks on a black background.

Color Contrast Check

Large Text (above 18pt) WCAG AA ✓ Pass

Any Text WCAG AA ✓ Pass

Large Text (above 18pt) WCAG AAA ✓ Pass

Any Text WCAG AAA ✓ Pass

If you want to check with other color combinations, try the [Color Contrast Checker](#).

XYZ 33.2110, 31.6374, 17.4529

Background



This preview shows how black text looks on a background with the XYZ color 33.2110, 31.6374, 17.4529.



This preview shows how white text looks on a background with the XYZ color 33.2110, 31.6374,

Color Blindness Simulation

Color vision deficiency is a very complex topic, and I could not describe the different causes any better than Wikipedia does, so if you want to learn more, you should check out their [article about color blindness](#).

Dichromacy



Original Color

33.2110, 31.6374, 17.4529

Protanopia

29.6151, 31.8645, 18.7769

Deuteranopia

32.3060, 31.6245, 17.4981



Tritanopia

36.2515, 31.5534, 32.6135

Trichromacy



Original Color

33.2110, 31.6374, 17.4529

Protanomaly

30.7938, 31.7585, 18.4169

Deuteranomaly

32.6317, 31.5646, 17.4694

Tritanomaly

35.0976, 31.5260, 26.4256

Monochromacy



Original Color

33.2110, 31.6374, 17.4529

Achromatopsia

30.2779, 31.8547, 34.6897

Achromatomaly

31.0054, 31.6690, 27.4002

CSS Examples

Text

The CSS property to change the color of the text to XYZ 33.2110, 31.6374, 17.4529 is called "color". The color property can be set on classes, ids or directly on the HTML element.

This example shows how text in the color `rgb(188, 144, 104)` looks like.

```
.text, #text, p{  
    color:rgb(188, 144, 104)  
}
```

If you want to add a text shadow in that color use the text-shadow property, you can generate a text shadow directly with our [CSS Text Shadow Generator](#).

Here you see how black text with a 4 pixel rgb(188, 144, 104) colored shadow looks like.

```
.shadow{ text-shadow: 4px 4px 2px rgb(188, 144, 104) }
```

Border

The CSS property to change the border of an element to XYZ 33.2110, 31.6374, 17.4529 is called "border". The border property can be set on classes, ids or directly on the HTML element.

This example shows the color as border, it can be applied via the CSS property "border" or "border-color".

```
.border, #border, table{ border:4px solid rgb(188, 144, 104) }
```


If only the border color should be changed use the property `border-color`.

```
.border{ border-color:rgb(188, 144, 104) }
```

If you want to add a box shadow in that color use:

Here you see how a box with a 4 pixel `rgb(188, 144, 104)` colored shadow looks like.

```
.boxshadow{ -moz-box-shadow:4px 4px 4px  
4px rgb(188, 144, 104); -webkit-box-  
shadow:4px 4px 4px 4px rgb(188, 144, 104);  
box-shadow:4px 4px 4px 4px rgb(188, 144,  
104) }
```

Background

The CSS property to change the background color of an element to XYZ 33.2110, 31.6374, 17.4529 is called "background". The background property can be set on classes, ids or directly on the HTML element.

```
.background, #background, body{  
background: rgb(188, 144, 104) }
```

If only the background color should be changed can be used:

```
.background{ background-color: rgb(188,  
144, 104) }
```

This example shows the color as background, it is applied via the CSS property "background".

To optimize and compress your CSS code, you can use our [online CSS compressor and optimizer](#) based on csstidy. If you want to create a linear or radial gradient as background or border, check our [CSS Gradient Generator](#).

Hey! You found this booklet interesting? Support Converting Colors with the new Membership Option!

The pro membership hides all ads, plus gives you double the colors in the color bucket, and more awesome pro features!

[Learn more, Memberships starting at \\$2.50/m!](#)

**Follow me
on Twitter!**

@ConvertingColor