

Converting Colors

XYZ(33.3024, 31.1377, 29.7700)

Have a look what the booklet for
XYZ(33.3024, 31.1377, 29.7700)
contains.

XYZ(33.2954, 31.1816, 29.8550)	3
<i>Conversions</i>	4
<i>Details</i>	6
<i>Harmonies</i>	12
<i>Previews</i>	24
<i>Color Blindness Simulation</i>	28
<i>CSS Examples</i>	31

Color

**XYZ(33.2954, 31.1816,
29.8550)**

Conversions

Conversions Part 1

Format	Color
Hex	B38F8E
RGB	179, 143, 142
RGB Percent	70%, 56%, 56%
CMY	0.2980, 0.4392, 0.4431
CMYK	0.00, 0.20, 0.21, 0.30
HSL	2°, 20%, 63%
HSV	2°, 21%, 70%
XYZ	33.2954, 31.1816, 29.8550
YIQ	153.6500, 21.7770, 7.3210

Conversions

Conversions Part 2

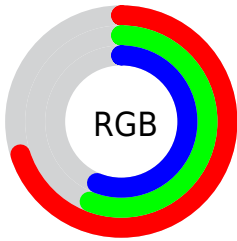
Format	Color
R_{YB}	179, 143, 142
Decimal	11767694
CIE Lab	62.66, 13.41, 5.69
CIE LCh	63, 14.570, 22.988
Yxy	31.1816, 0.3530, 0.3306
Android (android.graphics.Color)	4289957774 (0xFFB38F8E)
YUV	153.6500, -5.7434, 22.2320
Hunter-Lab	55.8405, 8.7114, 7.3891

Details

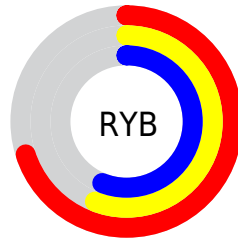
The XYZ color **33.2954, 31.1816, 29.8550** is a light color, and the websafe version is hex **CC9999**. A complement of this color would be **35.2122, 40.8454, 48.6763**, and the grayscale version is **30.5802, 32.1727, 35.0361**.

A 20% lighter version of the original color is **64.1910, 61.5802, 60.7275**, and **14.4503, 13.0370, 11.8800** is the 20% darker color. If you saturate the color by 10%, you get **29.6435, 25.8585, 22.5311**, and if you desaturate by 10%, it is **37.5707, 37.4056, 38.4522**.

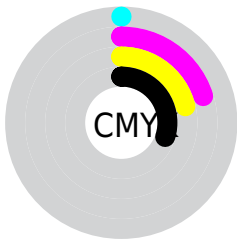
Distribution



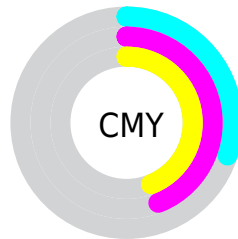
- Red (70%)
- Green (56%)
- Blue (56%)



- Red (70%)
- Yellow (56%)
- Blue (56%)



- Cyan (0%)
- Magenta (20%)
- Yellow (21%)
- Black (30%)



- Cyan (30%)
- Magenta (44%)
- Yellow (44%)

Brightness & Saturation Gradients

These gradients show how the XYZ color 33.2954, 31.1816, 29.8550 changes by changing the brightness by 10 percent. The first figure shows a shift by +10% for each color and the second figure -10%.

Similar to the brightness gradients but the following saturation gradients show a change of the XYZ color 33.2954, 31.1816, 29.8550 by changing the saturation by 10% instead.

■ 33.2954, 31.1816,
29.8550

■ 33.2954, 31.1816,
29.8550

308.6202,
307.3741, 315.4142

■ 22.5132, 20.7372,
19.4774

■ 64.1880, 61.5259,
60.4911

■ 14.3532, 12.9320,
11.8355

■ 85.0292, 82.1945,
81.5867

■ 8.4500, 7.3818,
6.5106

■ 109.9539,
107.0400, 107.0921

■ 4.4385, 3.7020,
3.0842

139.3277,
136.4467, 137.4257

■ 1.9531, 1.5083,
1.1378

173.5159,
170.7991, 173.0062

■ 0.6074, 0.2945,
0.0000

212.8838,

■ 0.0000, 0.0000,

210.4815, 214.2521

0.0000

257.7968,
255.8784, 261.5819

■ 33.2954, 31.1816,
29.8550

■ 33.2954, 31.1816,
29.8550

■ 29.6435, 25.8585,
22.5311

■ 37.5707, 37.4056,
38.4522

■ 26.5836, 21.3906,
16.4182

■ 42.4939, 44.5649,
48.3771

■ 24.0851, 17.7346,
11.4517

■ 48.0913, 52.6974,
59.6834

■ 22.1141, 14.8416,
7.5601

■ 54.3870, 61.8378,
72.4212

■ 20.6326, 12.6579,
4.6640

■ 61.4039, 72.0188,
86.6379

■ 19.5978, 11.1222,
2.6731

■ 69.1639, 83.2718,
102.3790

■ 18.9595, 10.1634,
1.4806

■ 72.4006, 88.3238,
107.8400

■ 18.6433, 9.6892,
0.8876

Harmonies

Analogous

The Analogous color harmony consists of three colors that are next to each other on the color wheel.



33.5933, 31.1816, 35.3049



33.2954, 31.1816, 29.8550



31.9972, 31.1816, 25.9422

Triad

The Triadic color harmony groups three colors that are evenly spaced from another and form a triangle on the color wheel.



33.2954, 31.1816, 29.8550



26.6898, 31.1816, 27.7813



29.1732, 31.1816, 46.0108

Complementary

The Complementary color scheme is a pair of colors which are on the opposite of each other on the color wheel.



33.2954, 31.1816, 29.8550



35.2122, 40.8454, 48.6763

Split Complementary

Split-complementary colors differ from the complementary color scheme. The scheme consists of three colors, the original color and two neighbors of the complement color.



27.3962, 31.1816, 43.4597



33.2954, 31.1816, 29.8550



26.0045, 31.1816, 32.6331

Square

The Square scheme is like the rectangle color scheme, but the four colors are evenly spaced on the color wheel.



33.2954, 31.1816, 29.8550



28.1700, 31.1816, 24.8417



26.2572, 31.1816, 38.4065



31.1544, 31.1816, 45.0537

Rectangle

The Rectangle color scheme consists of four colors that form a rectangle on the color wheel.



33.2954, 31.1816, 29.8550



30.7691, 31.1816, 24.5263



26.2572, 31.1816, 38.4065



28.5333, 31.1816, 45.5264

Sweetspot

The Sweet Spot groups the original color and five complimentary colors.



33.2963, 31.1830, 29.8556



71.1689, 72.6376, 76.6863



36.3383, 32.1599, 46.6142



15.6436, 15.9127, 16.7401



86.6293, 91.1408, 99.2523



17.0014, 17.8868, 19.4787

Same Dimension

The Same Dimension uses a secret algorithm to generate beautiful new colors.



33.2963, 31.1830, 29.8556



56.3876, 51.1197, 46.9587



36.2386, 37.0677, 30.8364



8.5142, 8.5409, 8.8523



13.1819, 6.8624, 0.6298



0.4208, 0.2281, 0.0218

Inverse Universe

The Inverse Universe completely reimagines the original color for something new.



35.2122, 40.8454, 48.6763



60.4663, 71.6916, 87.0321



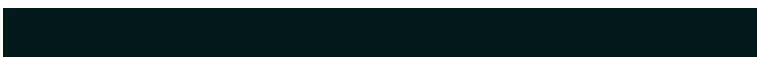
31.8430, 34.1071, 47.5533



8.7225, 9.5912, 10.8979



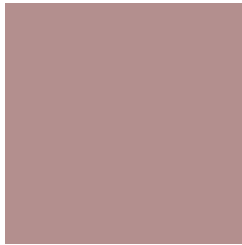
16.4738, 23.7480, 33.8525



0.5245, 0.7595, 1.0672

Previews

White Background



This preview shows how the XYZ color 33.2954, 31.1816, 29.8550 looks on a white background.

Color Contrast Check

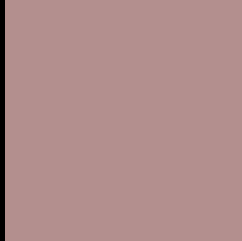
Large Text (above 18pt) WCAG AA × Fail

Any Text WCAG AA × Fail

Large Text (above 18pt) WCAG AAA × Fail

Any Text WCAG AAA × Fail

Black Background



This preview shows how the XYZ color 33.2954, 31.1816, 29.8550 looks on a black background.

Color Contrast Check

Large Text (above 18pt) WCAG AA ✓ Pass

Any Text WCAG AA ✓ Pass

Large Text (above 18pt) WCAG AAA ✓ Pass

Any Text WCAG AAA ✓ Pass

If you want to check with other color combinations, try the [Color Contrast Checker](#).

XYZ 33.2954, 31.1816, 29.8550

Background



This preview shows how black text looks on a background with the XYZ color 33.2954, 31.1816, 29.8550.



This preview shows how white text looks on a background with the XYZ color 33.2954, 31.1816,

Color Blindness Simulation

Color vision deficiency is a very complex topic, and I could not describe the different causes any better than Wikipedia does, so if you want to learn more, you should check out their [article about color blindness](#).

Dichromacy



Original Color

33.2954, 31.1816, 29.8550

Protanopia

29.9652, 31.2765, 31.6518

Deuteranopia

31.6642, 31.0269, 29.5192



Tritanopia

34.0148, 31.0200, 33.9005

Trichromacy



Original Color

33.2954, 31.1816, 29.8550

Protanomaly

31.0106, 31.1167, 31.1597

Deuteranomaly

32.1667, 31.0581, 29.4988

Tritanomaly

33.8407, 31.1874, 32.2531

Monochromacy



Original Color

33.2954, 31.1816, 29.8550

Achromatopsia

30.7148, 32.3143, 35.1903

Achromatomaly

31.5156, 31.8012, 33.3314

CSS Examples

Text

The CSS property to change the color of the text to XYZ 33.2954, 31.1816, 29.8550 is called "color". The color property can be set on classes, ids or directly on the HTML element.

This example shows how text in the color `rgb(179, 143, 142)` looks like.

```
.text, #text, p{  
    color:rgb(179, 143, 142)  
}
```

If you want to add a text shadow in that color use the text-shadow property, you can generate a text shadow directly with our [CSS Text Shadow Generator](#).

Here you see how black text with a 4 pixel rgb(179, 143, 142) colored shadow looks like.

```
.shadow{ text-shadow: 4px 4px 2px rgb(179, 143, 142) }
```

Border

The CSS property to change the border of an element to XYZ 33.2954, 31.1816, 29.8550 is called "border". The border property can be set on classes, ids or directly on the HTML element.

This example shows the color as border, it can be applied via the CSS property "border" or "border-color".

```
.border, #border, table{ border:4px solid rgb(179, 143, 142) }
```


If only the border color should be changed use the property `border-color`.

```
.border{ border-color:rgb(179, 143, 142) }
```

If you want to add a box shadow in that color use:

Here you see how a box with a 4 pixel `rgb(179, 143, 142)` colored shadow looks like.

```
.boxshadow{ -moz-box-shadow:4px 4px 4px  
4px rgb(179, 143, 142); -webkit-box-  
shadow:4px 4px 4px 4px rgb(179, 143, 142);  
box-shadow:4px 4px 4px 4px rgb(179, 143,  
142) }
```

Background

The CSS property to change the background color of an element to XYZ 33.2954, 31.1816, 29.8550 is called "background". The background property can be set on classes, ids or directly on the HTML element.

```
.background, #background, body{  
background: rgb(179, 143, 142) }
```

If only the background color should be changed can be used:

```
.background{ background-color: rgb(179,  
143, 142) }
```

This example shows the color as background, it is applied via the CSS property "background".

To optimize and compress your CSS code, you can use our [online CSS compressor and optimizer](#) based on csstidy. If you want to create a linear or radial gradient as background or border, check our [CSS Gradient Generator](#).

Hey! You found this booklet interesting? Support Converting Colors with the new Membership Option!

The pro membership hides all ads, plus gives you double the colors in the color bucket, and more awesome pro features!

[Learn more, Memberships starting at \\$2.50/m!](#)

**Follow me
on Twitter!**

@ConvertingColor