

Converting Colors

XYZ(33.3164, 32.1492, 18.4257)

Have a look what the booklet for
XYZ(33.3164, 32.1492, 18.4257)
contains.

XYZ(33.1824, 32.0584, 18.3489)	3
<i>Conversions</i>	4
<i>Details</i>	6
<i>Harmonies</i>	12
<i>Previews</i>	24
<i>Color Blindness Simulation</i>	28
<i>CSS Examples</i>	31

Color

**XYZ(33.1824, 32.0584,
18.3489)**

Conversions

Conversions Part 1

Format	Color
Hex	BA926B
RGB	186, 146, 107
RGB Percent	73%, 57%, 42%
CMY	0.2706, 0.4274, 0.5804
CMYK	0.00, 0.22, 0.42, 0.27
HSL	30°, 36%, 57%
HSV	30°, 42%, 73%
XYZ	33.1824, 32.0584, 18.3489
YIQ	153.5140, 36.3590, -3.6490

Conversions

Conversions Part 2

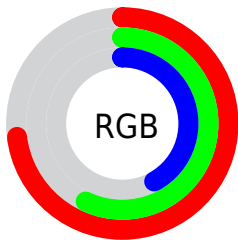
Format	Color
RYB	186, 184, 107
Decimal	12227179
CIELab	63.39, 9.86, 26.41
CIElCh	63, 28.193, 69.519
Yxy	32.0584, 0.3970, 0.3835
Android (android.graphics.Color)	4290417259 (0xFFBA926B)
YUV	153.5140, -22.9314, 28.4902
Hunter-Lab	56.6201, 5.5252, 20.4200

Details

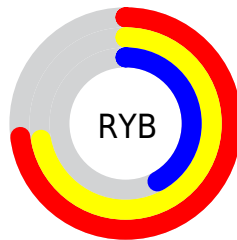
The XYZ color **33.1824, 32.0584, 18.3489** is a dark color, and the websafe version is hex **CC9966**. A complement of this color would be **25.3596, 27.5373, 50.4329**, and the grayscale version is **30.5890, 32.1820, 35.0462**.

A 20% lighter version of the original color is **64.2205, 63.0449, 41.5850**, and **14.3324, 13.5068, 5.9893** is the 20% darker color. If you saturate the color by 10%, you get **30.9150, 28.9248, 13.2736**, and if you desaturate by 10%, it is **35.7815, 35.5184, 24.5739**.

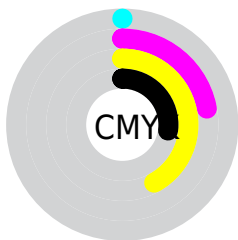
Distribution



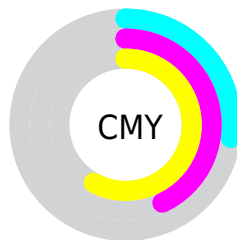
- Red (73%)
- Green (57%)
- Blue (42%)



- Red (73%)
- Yellow (72%)
- Blue (42%)



- Cyan (0%)
- Magenta (22%)
- Yellow (42%)
- Black (27%)



- Cyan (27%)
- Magenta (43%)
- Yellow (58%)

Brightness & Saturation Gradients

These gradients show how the XYZ color 33.1824, 32.0584, 18.3489 changes by changing the brightness by 10 percent. The first figure shows a shift by +10% for each color and the second figure -10%.

Similar to the brightness gradients but the following saturation gradients show a change of the XYZ color 33.1824, 32.0584, 18.3489 by changing the saturation by 10% instead.

■ 33.1824, 32.0584,
18.3489

■ 33.1824, 32.0584,
18.3489

308.1213,
311.3852, 255.1322

■ 22.4261, 21.4061,
11.0287

■ 64.0130, 62.9026,
41.4529

■ 14.2887, 13.4212,
5.9718

■ 84.8180, 83.8634,
58.0738

■ 8.4048, 7.7192,
2.7594

■ 109.7032,
109.0290, 78.6320

■ 4.4090, 3.9158,
0.9731

■ 139.0342,
138.7840, 103.5462

■ 1.9360, 1.6266,
0.0000

173.1761,
173.5127, 133.2347

■ 0.5976, 0.3754,
0.0000

212.4943,

■ 0.0000, 0.0000,

213.5996, 168.1162

0.0000

257.3543,
259.4289, 208.6091

■ 33.1824, 32.0584,
18.3489

■ 33.1824, 32.0584,
18.3489

■ 30.9150, 28.9248,
13.2736

■ 35.7815, 35.5184,
24.5739

■ 28.9604, 26.1019,
9.2733

■ 38.7251, 39.3108,
32.0130

■ 27.3012, 23.5791,
6.2676

■ 42.0281, 43.4470,
40.7281

■ 25.9169, 21.3432,
4.1634

■ 45.7037, 47.9365,
50.7761

■ 24.7833, 19.3796,
2.8499

■ 49.7646, 52.7883,
62.2106

■ 24.0623, 18.0644,
2.2186

■ 54.2226, 58.0110,
75.0823

■ 59.0891, 63.6131,
89.4392

■ 64.2456, 69.5509,
104.6463

■ 66.8071, 74.6739,
105.5001

Harmonies

Analogous

The Analogous color harmony consists of three colors that are next to each other on the color wheel.



36.6572, 32.0584, 22.9018



33.1824, 32.0584, 18.3489



29.2421, 32.0584, 17.6630

Triad

The Triadic color harmony groups three colors that are evenly spaced from another and form a triangle on the color wheel.



33.1824, 32.0584, 18.3489



23.6303, 32.0584, 38.5957



35.5184, 32.0584, 54.3280

Complementary

The Complementary color scheme is a pair of colors which are on the opposite of each other on the color wheel.



33.1824, 32.0584, 18.3489



25.3596, 27.5373, 50.4329

Split Complementary

Split-complementary colors differ from the complementary color scheme. The scheme consists of three colors, the original color and two neighbors of the complement color.



31.7330, 32.0584, 60.7911



33.1824, 32.0584, 18.3489



25.0223, 32.0584, 50.5081

Square

The Square scheme is like the rectangle color scheme, but the four colors are evenly spaced on the color wheel.



33.1824, 32.0584, 18.3489



23.9460, 32.0584, 27.8901



27.9106, 32.0584, 59.2603



38.0840, 32.0584, 43.0100

Rectangle

The Rectangle color scheme consists of four colors that form a rectangle on the color wheel.



33.1824, 32.0584, 18.3489



26.9085, 32.0584, 19.3003



27.9106, 32.0584, 59.2603



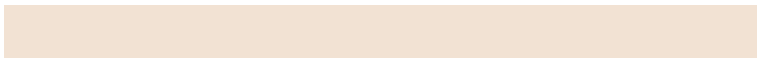
34.3338, 32.0584, 57.2398

Sweetspot

The Sweet Spot groups the original color and five complimentary colors.



33.1832, 32.0599, 18.3495



75.7110, 78.1719, 72.5670



30.8383, 23.0871, 30.7721



16.3696, 16.8381, 15.1709



90.7827, 95.5105, 104.0109



18.6292, 19.5994, 21.3438

Same Dimension

The Same Dimension uses a secret algorithm to generate beautiful new colors.



33.1832, 32.0599, 18.3495



56.2767, 52.7682, 24.5784



40.1863, 46.0661, 20.6839



9.3609, 9.7248, 9.4906



16.2632, 12.3028, 1.5175



0.6353, 0.5576, 0.0741

Inverse Universe

The Inverse Universe completely reimagines the original color for something new.



25.3596, 27.5373, 50.4329



40.2066, 43.4769, 90.4742



20.3226, 17.4634, 48.7539



8.8868, 9.4508, 11.4352



8.7408, 7.9412, 32.3252



0.3700, 0.4036, 1.1601

Previews

White Background



This preview shows how the XYZ color 33.1824, 32.0584, 18.3489 looks on a white background.

Color Contrast Check

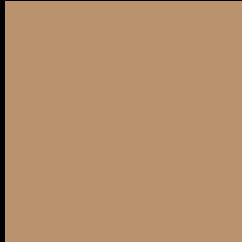
Large Text (above 18pt) WCAG AA × Fail

Any Text WCAG AA × Fail

Large Text (above 18pt) WCAG AAA × Fail

Any Text WCAG AAA × Fail

Black Background



This preview shows how the XYZ color 33.1824, 32.0584, 18.3489 looks on a black background.

Color Contrast Check

Large Text (above 18pt) WCAG AA ✓ Pass

Any Text WCAG AA ✓ Pass

Large Text (above 18pt) WCAG AAA ✓ Pass

Any Text WCAG AAA ✓ Pass

If you want to check with other color combinations, try the [Color Contrast Checker](#).

XYZ 33.1824, 32.0584, 18.3489

Background



This preview shows how black text looks on a background with the XYZ color 33.1824, 32.0584, 18.3489.



This preview shows how white text looks on a background with the XYZ color 33.1824, 32.0584,

Color Blindness Simulation

Color vision deficiency is a very complex topic, and I could not describe the different causes any better than Wikipedia does, so if you want to learn more, you should check out their [article about color blindness](#).

Dichromacy



Original Color

33.1824, 32.0584, 18.3489

Protanopia

30.0960, 32.3440, 19.4086

Deuteranopia

32.6160, 31.9963, 18.3668



Tritanopia

36.1992, 31.9377, 33.5348

Trichromacy



Original Color

33.1824, 32.0584, 18.3489

Protanomaly

31.0605, 32.1216, 19.0310

Deuteranomaly

32.8547, 32.1193, 18.3779

Tritanomaly

35.0324, 31.9141, 27.2353

Monochromacy



Original Color

33.1824, 32.0584, 18.3489

Achromatopsia

30.7148, 32.3143, 35.1903

Achromatomaly

31.3079, 32.0464, 28.2024

CSS Examples

Text

The CSS property to change the color of the text to XYZ 33.1824, 32.0584, 18.3489 is called "color". The color property can be set on classes, ids or directly on the HTML element.

This example shows how text in the color `rgb(186, 146, 107)` looks like.

```
.text, #text, p{  
    color:rgb(186, 146, 107)  
}
```

If you want to add a text shadow in that color use the text-shadow property, you can generate a text shadow directly with our [CSS Text Shadow Generator](#).

Here you see how black text with a 4 pixel rgb(186, 146, 107) colored shadow looks like.

```
.shadow{ text-shadow: 4px 4px 2px rgb(186, 146, 107) }
```

Border

The CSS property to change the border of an element to XYZ 33.1824, 32.0584, 18.3489 is called "border". The border property can be set on classes, ids or directly on the HTML element.

This example shows the color as border, it can be applied via the CSS property "border" or "border-color".

```
.border, #border, table{ border:4px solid rgb(186, 146, 107) }
```


If only the border color should be changed use the property `border-color`.

```
.border{ border-color:rgb(186, 146, 107) }
```

If you want to add a box shadow in that color use:

Here you see how a box with a 4 pixel `rgb(186, 146, 107)` colored shadow looks like.

```
.boxshadow{ -moz-box-shadow:4px 4px 4px  
4px rgb(186, 146, 107); -webkit-box-  
shadow:4px 4px 4px 4px rgb(186, 146, 107);  
box-shadow:4px 4px 4px 4px rgb(186, 146,  
107) }
```

Background

The CSS property to change the background color of an element to XYZ 33.1824, 32.0584, 18.3489 is called "background". The background property can be set on classes, ids or directly on the HTML element.

```
.background, #background, body{  
background: rgb(186, 146, 107) }
```

If only the background color should be changed can be used:

```
.background{ background-color: rgb(186,  
146, 107) }
```

This example shows the color as background, it is applied via the CSS property "background".

To optimize and compress your CSS code, you can use our [online CSS compressor and optimizer](#) based on csstidy. If you want to create a linear or radial gradient as background or border, check our [CSS Gradient Generator](#).

Hey! You found this booklet interesting? Support Converting Colors with the new Membership Option!

The pro membership hides all ads, plus gives you double the colors in the color bucket, and more awesome pro features!

[Learn more, Memberships starting at \\$2.50/m!](#)

**Follow me
on Twitter!**

@ConvertingColor