

Converting Colors

XYZ(33.3185, 31.8051, 32.0748)

Have a look what the booklet for
XYZ(33.3185, 31.8051, 32.0748)
contains.

XYZ(33.2245, 31.7783, 31.9865)	3
<i>Conversions</i>	4
<i>Details</i>	6
<i>Harmonies</i>	12
<i>Previews</i>	24
<i>Color Blindness Simulation</i>	28
<i>CSS Examples</i>	31

Color

**XYZ(33.2245, 31.7783,
31.9865)**

Conversions

Conversions Part 1

Format	Color
Hex	AF9293
RGB	175, 146, 147
RGB Percent	69%, 57%, 58%
CMY	0.3137, 0.4274, 0.4235
CMYK	0.00, 0.17, 0.16, 0.31
HSL	358°, 15%, 63%
HSV	358°, 17%, 69%
XYZ	33.2245, 31.7783, 31.9865
YIQ	154.7850, 16.9630, 6.4590

Conversions

Conversions Part 2

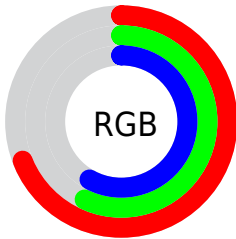
Format	Color
R_{YB}	175, 146, 147
Decimal	11506323
CIE _{Lab}	63.16, 11.01, 3.53
CIE _{LCh}	63, 11.565, 17.763
Yxy	31.7783, 0.3426, 0.3276
Android (android.graphics.Color)	4289696403 (0xFFAF9293)
YUV	154.7850, -3.8380, 17.7286
Hunter-Lab	56.3722, 6.5524, 5.8185

Details

The XYZ color **33.2245, 31.7783, 31.9865** is a light color, and the websafe version is hex **CC9999**. A complement of this color would be **34.8252, 39.8276, 45.8982**, and the grayscale version is **31.0726, 32.6907, 35.6002**.

A 20% lighter version of the original color is **64.1519, 62.5145, 63.9437**, and **14.2759, 13.1851, 13.1018** is the 20% darker color. If you saturate the color by 10%, you get **29.5006, 26.2987, 24.6766**, and if you desaturate by 10%, it is **37.5580, 38.1646, 40.4614**.

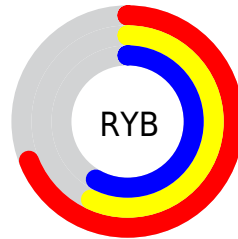
Distribution



Red (69%)

Green (57%)

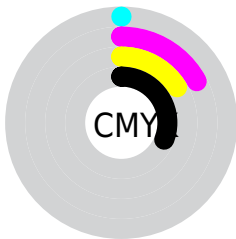
Blue (58%)



Red (69%)

Yellow (57%)

Blue (58%)

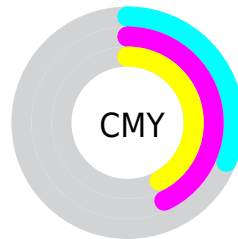


Cyan (0%)

Magenta (17%)

Yellow (16%)

Black (31%)



Cyan (31%)

Magenta (43%)

Yellow (42%)

Brightness & Saturation Gradients

These gradients show how the XYZ color 33.2245, 31.7783, 31.9865 changes by changing the brightness by 10 percent. The first figure shows a shift by +10% for each color and the second figure -10%.

Similar to the brightness gradients but the following saturation gradients show a change of the XYZ color 33.2245, 31.7783, 31.9865 by changing the saturation by 10% instead.

■ 33.2245, 31.7783,
31.9865

■ 33.2245, 31.7783,
31.9865

308.3073,
310.1081, 325.5486

■ 22.4585, 21.1922,
21.0865

■ 64.0782, 62.4634,
63.8876

■ 14.3127, 13.2646,
12.9954

■ 84.8967, 83.3312,
85.7257

■ 8.4216, 7.6110,
7.2947

109.7967,
108.3950, 112.0469

■ 4.4200, 3.8471,
3.5658

139.1436,
138.0392, 143.2698

■ 1.9424, 1.5884,
1.3903

173.3027,
172.6482, 179.8129

■ 0.6013, 0.3497,
0.1341

212.6395,

■ 0.0000, 0.0000,

212.6064, 222.0947

0.0000

257.5192,
258.2983, 270.5337

■ 33.2245, 31.7783,
31.9865

■ 33.2245, 31.7783,
31.9865

■ 29.5006, 26.2987,
24.6766

■ 37.5580, 38.1646,
40.4614

■ 26.3563, 21.6807,
18.4788

■ 42.5238, 45.4915,
50.1470

■ 23.7635, 17.8817,
13.3393

■ 48.1469, 53.7964,
61.0888

■ 21.6902, 14.8539,
9.1990

■ 54.4500, 63.1135,
73.3297

■ 20.1014, 12.5446,
5.9929

■ 61.4548, 73.4753,
86.9103

■ 18.9579, 10.8944,
3.6483

■ 69.1820, 84.9129,
101.8695

■ 18.2140, 9.8343,
2.0820

■ 71.4893, 87.8540,
107.7974

■ 17.8097, 9.2704,
1.1926

■ 17.7122, 9.1272,
1.0009

Harmonies

Analogous

The Analogous color harmony consists of three colors that are next to each other on the color wheel.



33.3062, 31.7783, 36.4991



33.2245, 31.7783, 31.9865



32.3161, 31.7783, 28.4891

Triad

The Triadic color harmony groups three colors that are evenly spaced from another and form a triangle on the color wheel.



33.2245, 31.7783, 31.9865



27.9871, 31.7783, 29.0192



29.5581, 31.7783, 43.9284

Complementary

The Complementary color scheme is a pair of colors which are on the opposite of each other on the color wheel.



33.2245, 31.7783, 31.9865



34.8252, 39.8276, 45.8982

Split Complementary

Split-complementary colors differ from the complementary color scheme. The scheme consists of three colors, the original color and two neighbors of the complement color.



28.1866, 31.7783, 41.5303



33.2245, 31.7783, 31.9865



27.3012, 31.7783, 32.7702

Square

The Square scheme is like the rectangle color scheme, but the four colors are evenly spaced on the color wheel.



33.2245, 31.7783, 31.9865



29.2770, 31.7783, 26.8826



27.3729, 31.7783, 37.3546



31.1510, 31.7783, 43.6716

Rectangle

The Rectangle color scheme consists of four colors that form a rectangle on the color wheel.



33.2245, 31.7783, 31.9865



31.3815, 31.7783, 27.0815



27.3729, 31.7783, 37.3546



29.0569, 31.7783, 43.3979

Sweetspot

The Sweet Spot groups the original color and five complimentary colors.



33.2254, 31.7797, 31.9872



68.5106, 70.1885, 74.8976



35.3730, 32.6014, 44.9860



15.0979, 15.4095, 16.3943



84.5950, 89.0005, 96.9216



16.2198, 17.0645, 18.5832

Same Dimension

The Same Dimension uses a secret algorithm to generate beautiful new colors.



33.2254, 31.7797, 31.9872



56.8605, 53.0226, 52.1030



35.2751, 36.0038, 32.2861



8.0160, 8.0196, 8.3950



12.6890, 6.5381, 0.7417



0.3565, 0.1833, 0.0392

Inverse Universe

The Inverse Universe completely reimagines the original color for something new.



33.2254, 31.7797, 31.9872



56.8605, 53.0226, 52.1030



32.5046, 35.0304, 45.6060



8.0160, 8.0196, 8.3950



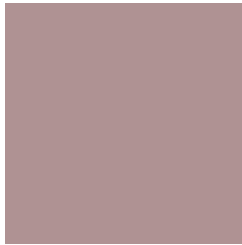
12.6890, 6.5381, 0.7417



0.3565, 0.1833, 0.0392

Previews

White Background



This preview shows how the XYZ color 33.2245, 31.7783, 31.9865 looks on a white background.

Color Contrast Check

Large Text (above 18pt) WCAG AA × Fail

Any Text WCAG AA × Fail

Large Text (above 18pt) WCAG AAA × Fail

Any Text WCAG AAA × Fail

Black Background



This preview shows how the XYZ color 33.2245, 31.7783, 31.9865 looks on a black background.

Color Contrast Check

Large Text (above 18pt) WCAG AA ✓ Pass

Any Text WCAG AA ✓ Pass

Large Text (above 18pt) WCAG AAA ✓ Pass

Any Text WCAG AAA ✓ Pass

If you want to check with other color combinations, try the [Color Contrast Checker](#).

XYZ 33.2245, 31.7783, 31.9865

Background



This preview shows how black text looks on a background with the XYZ color 33.2245, 31.7783, 31.9865.



This preview shows how white text looks on a background with the XYZ color 33.2245, 31.7783,

Color Blindness Simulation

Color vision deficiency is a very complex topic, and I could not describe the different causes any better than Wikipedia does, so if you want to learn more, you should check out their [article about color blindness](#).

Dichromacy



Original Color

33.2245, 31.7783, 31.9865

Protanopia

30.5245, 31.7588, 33.7994

Deuteranopia

32.4339, 31.8324, 32.0386



Tritanopia

34.0306, 31.8812, 35.8126

Trichromacy



Original Color

33.2245, 31.7783, 31.9865

Protanomaly

31.5156, 31.8012, 33.3314

Deuteranomaly

32.7134, 31.7447, 32.0069

Tritanomaly

33.7797, 31.7808, 34.4909

Monochromacy



Original Color

33.2245, 31.7783, 31.9865

Achromatopsia

31.1553, 32.7778, 35.6950

Achromatomaly

31.7960, 32.4049, 34.2847

CSS Examples

Text

The CSS property to change the color of the text to XYZ 33.2245, 31.7783, 31.9865 is called "color". The color property can be set on classes, ids or directly on the HTML element.

This example shows how text in the color `rgb(175, 146, 147)` looks like.

```
.text, #text, p{  
    color:rgb(175, 146, 147)  
}
```

If you want to add a text shadow in that color use the text-shadow property, you can generate a text shadow directly with our [CSS Text Shadow Generator](#).

Here you see how black text with a 4 pixel rgb(175, 146, 147) colored shadow looks like.

```
.shadow{ text-shadow: 4px 4px 2px rgb(175, 146, 147) }
```

Border

The CSS property to change the border of an element to XYZ 33.2245, 31.7783, 31.9865 is called "border". The border property can be set on classes, ids or directly on the HTML element.

This example shows the color as border, it can be applied via the CSS property "border" or "border-color".

```
.border, #border, table{ border:4px solid rgb(175, 146, 147) }
```


If only the border color should be changed use the property `border-color`.

```
.border{ border-color:rgb(175, 146, 147) }
```

If you want to add a box shadow in that color use:

Here you see how a box with a 4 pixel `rgb(175, 146, 147)` colored shadow looks like.

```
.boxshadow{ -moz-box-shadow:4px 4px 4px  
4px rgb(175, 146, 147); -webkit-box-  
shadow:4px 4px 4px 4px rgb(175, 146, 147);  
box-shadow:4px 4px 4px 4px rgb(175, 146,  
147) }
```

Background

The CSS property to change the background color of an element to XYZ 33.2245, 31.7783, 31.9865 is called "background". The background property can be set on classes, ids or directly on the HTML element.

```
.background, #background, body{  
background: rgb(175, 146, 147) }
```

If only the background color should be changed can be used:

```
.background{ background-color: rgb(175,  
146, 147) }
```

This example shows the color as background, it is applied via the CSS property "background".

To optimize and compress your CSS code, you can use our [online CSS compressor and optimizer](#) based on csstidy. If you want to create a linear or radial gradient as background or border, check our [CSS Gradient Generator](#).

Hey! You found this booklet interesting? Support Converting Colors with the new Membership Option!

The pro membership hides all ads, plus gives you double the colors in the color bucket, and more awesome pro features!

[Learn more, Memberships starting at \\$2.50/m!](#)

**Follow me
on Twitter!**

@ConvertingColor