

Converting Colors

XYZ(33.3738, 32.5812, 23.9928)

Have a look what the booklet for
XYZ(33.3738, 32.5812, 23.9928)
contains.

XYZ(33.3476, 32.4842, 23.9145)	3
<i>Conversions</i>	4
<i>Details</i>	6
<i>Harmonies</i>	12
<i>Previews</i>	24
<i>Color Blindness Simulation</i>	28
<i>CSS Examples</i>	31

Color

**XYZ(33.3476, 32.4842,
23.9145)**

Conversions

Conversions Part 1

Format	Color
Hex	B5947D
RGB	181, 148, 125
RGB Percent	71%, 58%, 49%
CMY	0.2902, 0.4196, 0.5098
CMYK	0.00, 0.18, 0.31, 0.29
HSL	25°, 27%, 60%
HSV	25°, 31%, 71%
XYZ	33.3476, 32.4842, 23.9145
YIQ	155.2450, 27.0510, -0.1570

Conversions

Conversions Part 2

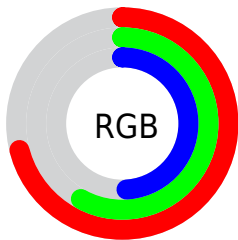
Format	Color
RYB	181, 164, 125
Decimal	11900029
CIELab	63.74, 8.94, 16.82
CIElCh	64, 19.044, 62.003
Yxy	32.4842, 0.3716, 0.3620
Android (android.graphics.Color)	4290090109 (0xFFB5947D)
YUV	155.2450, -14.9108, 22.5871
Hunter-Lab	56.9949, 4.6989, 15.0189

Details

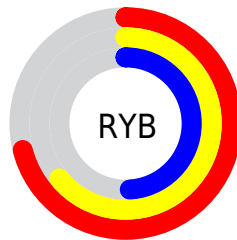
The XYZ color **33.3476, 32.4842, 23.9145** is a light color, and the websafe version is hex **CC9999**. A complement of this color would be **29.0244, 32.1489, 48.3917**, and the grayscale version is **31.3205, 32.9516, 35.8843**.

A 20% lighter version of the original color is **64.4163, 63.6326, 51.0067**, and **14.3316, 13.5832, 8.7039** is the 20% darker color. If you saturate the color by 10%, you get **30.6988, 28.8713, 17.8374**, and if you desaturate by 10%, it is **36.3630, 36.4927, 31.1541**.

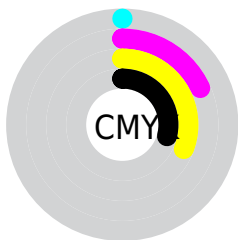
Distribution



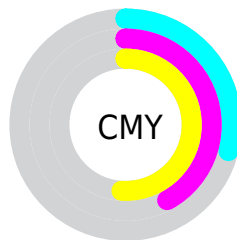
- Red (71%)
- Green (58%)
- Blue (49%)



- Red (71%)
- Yellow (64%)
- Blue (49%)



- Cyan (0%)
- Magenta (18%)
- Yellow (31%)
- Black (29%)



- Cyan (29%)
- Magenta (42%)
- Yellow (51%)

Brightness & Saturation Gradients

These gradients show how the XYZ color 33.3476, 32.4842, 23.9145 changes by changing the brightness by 10 percent. The first figure shows a shift by +10% for each color and the second figure -10%.

Similar to the brightness gradients but the following saturation gradients show a change of the XYZ color 33.3476, 32.4842, 23.9145 by changing the saturation by 10% instead.

■ 33.3476, 32.4842,
23.9145

■ 33.3476, 32.4842,
23.9145

308.8505,
313.3191, 285.6606

■ 22.5534, 21.7316,
15.0586

■ 64.2689, 63.5694,
50.8327

■ 14.3829, 13.6598,
8.7134

■ 85.1267, 84.6708,
69.7321

■ 8.4710, 7.8844,
4.4605

■ 110.0697,
109.9906, 92.8164

■ 4.4521, 4.0211,
1.8812

139.4632,
139.9131, 120.5042

■ 1.9609, 1.6854,
0.4807

173.6728,
174.8229, 153.2139

■ 0.6119, 0.4142,
0.0000

213.0636,

■ 0.0000, 0.0000,

215.1042, 191.3642

0.0000

258.0010,
261.1414, 235.3736

■ 33.3476, 32.4842,
23.9145

■ 33.3476, 32.4842,
23.9145

■ 30.6988, 28.8713,
17.8374

■ 36.3630, 36.4927,
31.1541

■ 28.3984, 25.6366,
12.8591

■ 39.7571, 40.9046,
39.6113

■ 26.4304, 22.7680,
8.9127

■ 43.5443, 45.7328,
49.3400

■ 24.7763, 20.2508,
5.9232

■ 47.7378, 50.9886,
60.3904

■ 23.4156, 18.0691,
3.8051

■ 52.3497, 56.6826,
72.8099

■ 22.3242, 16.2054,
2.4574

■ 57.3920, 62.8252,
86.6435

■ 21.5284, 14.7684,
1.7159

■ 62.8760, 69.4262,
101.9342

■ 66.3366, 75.5049,
105.6853

■ 69.4532, 81.7380,
106.7242

Harmonies

Analogous

The Analogous color harmony consists of three colors that are next to each other on the color wheel.



35.4351, 32.4842, 28.1383



33.3476, 32.4842, 23.9145



30.6962, 32.4842, 22.6204

Triad

The Triadic color harmony groups three colors that are evenly spaced from another and form a triangle on the color wheel.



33.3476, 32.4842, 23.9145



26.0251, 32.4842, 35.8860



33.6757, 32.4842, 49.3553

Complementary

The Complementary color scheme is a pair of colors which are on the opposite of each other on the color wheel.



33.3476, 32.4842, 23.9145



29.0244, 32.1489, 48.3917

Split Complementary

Split-complementary colors differ from the complementary color scheme. The scheme consists of three colors, the original color and two neighbors of the complement color.



31.0550, 32.4842, 52.1859



33.3476, 32.4842, 23.9145



26.7244, 32.4842, 43.7449

Square

The Square scheme is like the rectangle color scheme, but the four colors are evenly spaced on the color wheel.



33.3476, 32.4842, 23.9145



26.5619, 32.4842, 28.9091



28.5282, 32.4842, 49.9996



35.6320, 32.4842, 42.7277

Rectangle

The Rectangle color scheme consists of four colors that form a rectangle on the color wheel.



33.3476, 32.4842, 23.9145



28.9921, 32.4842, 23.4176



28.5282, 32.4842, 49.9996



32.8382, 32.4842, 50.8222

Sweetspot

The Sweet Spot groups the original color and five complimentary colors.



33.3484, 32.4857, 23.9152



72.3647, 74.7502, 73.8889



32.6132, 26.9807, 36.1083



15.4387, 15.8969, 15.4574



86.6293, 91.1408, 99.2523



17.0014, 17.8868, 19.4787

Same Dimension

The Same Dimension uses a secret algorithm to generate beautiful new colors.



33.3484, 32.4857, 23.9152



56.4858, 53.7807, 35.3368



38.1658, 42.1204, 25.5210



8.7735, 9.0595, 8.9388



14.9061, 10.3107, 1.2045



0.5271, 0.4406, 0.0573

Inverse Universe

The Inverse Universe completely reimagines the original color for something new.



29.0244, 32.1489, 48.3917



47.5243, 53.0729, 86.0339



24.8610, 23.8219, 47.0039



8.4441, 9.0344, 10.8051



9.4186, 9.6376, 31.5008



0.3521, 0.4147, 1.0097

Previews

White Background



This preview shows how the XYZ color 33.3476, 32.4842, 23.9145 looks on a white background.

Color Contrast Check

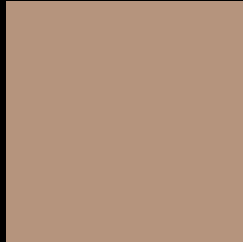
Large Text (above 18pt) WCAG AA × Fail

Any Text WCAG AA × Fail

Large Text (above 18pt) WCAG AAA × Fail

Any Text WCAG AAA × Fail

Black Background



This preview shows how the XYZ color 33.3476, 32.4842, 23.9145 looks on a black background.

Color Contrast Check

Large Text (above 18pt) WCAG AA ✓ Pass

Any Text WCAG AA ✓ Pass

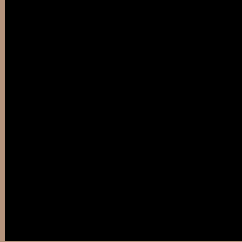
Large Text (above 18pt) WCAG AAA ✓ Pass

Any Text WCAG AAA ✓ Pass

If you want to check with other color combinations, try the [Color Contrast Checker](#).

XYZ 33.3476, 32.4842, 23.9145

Background



This preview shows how black text looks on a background with the XYZ color 33.3476, 32.4842, 23.9145.



This preview shows how white text looks on a background with the XYZ color 33.3476, 32.4842,

23.9145.

Color Blindness Simulation

Color vision deficiency is a very complex topic, and I could not describe the different causes any better than Wikipedia does, so if you want to learn more, you should check out their [article about color blindness](#).

Dichromacy



Original Color

33.3476, 32.4842, 23.9145

Protanopia

30.5561, 32.4562, 25.0763

Deuteranopia

33.2715, 32.6789, 23.9561



Tritanopia

35.6568, 32.5034, 35.4048

Trichromacy



Original Color

33.3476, 32.4842, 23.9145

Protanomaly

31.6366, 32.5348, 24.6911

Deuteranomaly

33.2715, 32.6789, 23.9561

Tritanomaly

34.6879, 32.3317, 30.7979

Monochromacy



Original Color

33.3476, 32.4842, 23.9145

Achromatopsia

31.1553, 32.7778, 35.6950

Achromatomaly

31.5721, 32.3626, 30.9681

CSS Examples

Text

The CSS property to change the color of the text to XYZ 33.3476, 32.4842, 23.9145 is called "color". The color property can be set on classes, ids or directly on the HTML element.

This example shows how text in the color `rgb(181, 148, 125)` looks like.

```
.text, #text, p{  
    color:rgb(181, 148, 125)  
}
```

If you want to add a text shadow in that color use the text-shadow property, you can generate a text shadow directly with our [CSS Text Shadow Generator](#).

Here you see how black text with a 4 pixel rgb(181, 148, 125) colored shadow looks like.

```
.shadow{ text-shadow: 4px 4px 2px rgb(181, 148, 125) }
```

Border

The CSS property to change the border of an element to XYZ 33.3476, 32.4842, 23.9145 is called "border". The border property can be set on classes, ids or directly on the HTML element.

This example shows the color as border, it can be applied via the CSS property "border" or "border-color".

```
.border, #border, table{ border:4px solid rgb(181, 148, 125) }
```


If only the border color should be changed use the property `border-color`.

```
.border{ border-color:rgb(181, 148, 125) }
```

If you want to add a box shadow in that color use:

Here you see how a box with a 4 pixel `rgb(181, 148, 125)` colored shadow looks like.

```
.boxshadow{ -moz-box-shadow:4px 4px 4px  
4px rgb(181, 148, 125); -webkit-box-  
shadow:4px 4px 4px 4px rgb(181, 148, 125);  
box-shadow:4px 4px 4px 4px rgb(181, 148,  
125) }
```

Background

The CSS property to change the background color of an element to XYZ 33.3476, 32.4842, 23.9145 is called "background". The background property can be set on classes, ids or directly on the HTML element.

```
.background, #background, body{  
background: rgb(181, 148, 125) }
```

If only the background color should be changed can be used:

```
.background{ background-color: rgb(181,  
148, 125) }
```

This example shows the color as background, it is applied via the CSS property "background".

To optimize and compress your CSS code, you can use our [online CSS compressor and optimizer](#) based on csstidy. If you want to create a linear or radial gradient as background or border, check our [CSS Gradient Generator](#).

Hey! You found this booklet interesting? Support Converting Colors with the new Membership Option!

The pro membership hides all ads, plus gives you double the colors in the color bucket, and more awesome pro features!

[Learn more, Memberships starting at \\$2.50/m!](#)

**Follow me
on Twitter!**

@ConvertingColor