

Converting Colors

XYZ(33.3954, 30.9791, 29.7112)

Have a look what the booklet for
XYZ(33.3954, 30.9791, 29.7112)
contains.

XYZ(33.3779, 31.0023, 29.8160)	3
<i>Conversions</i>	4
<i>Details</i>	6
<i>Harmonies</i>	12
<i>Previews</i>	24
<i>Color Blindness Simulation</i>	28
<i>CSS Examples</i>	31

Color

**XYZ(33.3779, 31.0023,
29.8160)**

Conversions

Conversions Part 1

Format	Color
Hex	B48E8E
RGB	180, 142, 142
RGB Percent	71%, 56%, 56%
CMY	0.2941, 0.4431, 0.4431
CMYK	0.00, 0.21, 0.21, 0.29
HSL	0°, 20%, 63%
HSV	0°, 21%, 71%
XYZ	33.3779, 31.0023, 29.8160
YIQ	153.3620, 22.6480, 8.0560

Conversions

Conversions Part 2

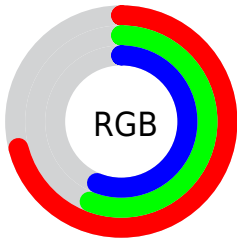
Format	Color
R_{YB}	180, 142, 142
Decimal	11832974
CIE _{Lab}	62.51, 14.35, 5.49
CIE _{LCh}	63, 15.367, 20.916
Yxy	31.0023, 0.3543, 0.3291
Android (android.graphics.Color)	4290023054 (0xFFB48E8E)
YUV	153.3620, -5.6015, 23.3615
Hunter-Lab	55.6797, 9.5646, 7.2265

Details

The XYZ color **33.3779, 31.0023, 29.8160** is a light color, and the websafe version is hex **CC9999**. A complement of this color would be **35.7145, 41.6875, 49.3445**, and the grayscale version is **30.4535, 32.0394, 34.8909**.

A 20% lighter version of the original color is **64.2958, 61.2982, 60.6675**, and **14.5113, 12.9390, 11.8579** is the 20% darker color. If you saturate the color by 10%, you get **29.6691, 25.5754, 22.4419**, and if you desaturate by 10%, it is **37.7391, 37.3841, 38.4850**.

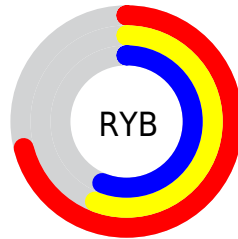
Distribution



Red (71%)

Green (56%)

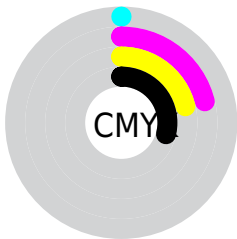
Blue (56%)



Red (71%)

Yellow (56%)

Blue (56%)

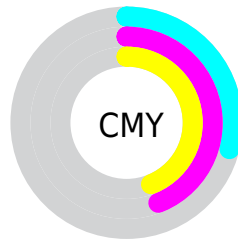


Cyan (0%)

Magenta (21%)

Yellow (21%)

Black (29%)



Cyan (29%)


Magenta (44%)


Yellow (44%)

Brightness & Saturation Gradients


These gradients show how the XYZ color 33.3779, 31.0023, 29.8160 changes by changing the brightness by 10 percent. The first figure shows a shift by +10% for each color and the second figure -10%.

Similar to the brightness gradients but the following saturation gradients show a change of the XYZ color 33.3779, 31.0023, 29.8160 by changing the saturation by 10% instead.


 33.3779, 31.0023,
29.8160


 33.3779, 31.0023,
29.8160


308.9841,
306.5489, 315.2264


 22.5767, 20.6006,
19.4481

 64.3158, 61.2437,
60.4286

 14.4002, 12.8324,
11.8144


 85.1833, 81.8522,
81.5105

 8.4831, 7.3132,
6.4964


 110.1368,
106.6317, 107.0007

 4.4600, 3.6587,
3.0756

139.5419,
135.9667, 137.3178

 1.9655, 1.4846,
1.1334

173.7638,
170.2415, 172.8804

 0.6145, 0.2778,
0.0000

213.1679,

 0.0000, 0.0000,

209.8405, 214.1070

0.0000

258.1195,
255.1482, 261.4162

■ 33.3779, 31.0023,
29.8160

■ 33.3779, 31.0023,
29.8160

■ 29.6691, 25.5754,
22.4419

■ 37.7391, 37.3841,
38.4850

■ 26.5789, 21.0536,
16.2988

■ 42.7792, 44.7591,
48.5047

■ 24.0745, 17.3889,
11.3202

■ 48.5263, 53.1687,
59.9302

■ 22.1189, 14.5272,
7.4327

■ 55.0064, 62.6507,
72.8128

■ 20.6709, 12.4084,
4.5545

■ 62.2438, 73.2409,
87.2012

■ 19.6837, 10.9637,
2.5922

■ 70.2621, 84.9737,
103.1419

■ 19.1016, 10.1118,
1.4352

■ 72.6325, 88.4434,
107.8509

■ 18.8227, 9.7037,
0.8809

Harmonies

Analogous

The Analogous color harmony consists of three colors that are next to each other on the color wheel.



33.6112, 31.0023, 35.6041



33.3779, 31.0023, 29.8160



32.0708, 31.0023, 25.5955

Triad

The Triadic color harmony groups three colors that are evenly spaced from another and form a triangle on the color wheel.



33.3779, 31.0023, 29.8160



26.4593, 31.0023, 27.0144



28.8375, 31.0023, 46.4291

Complementary

The Complementary color scheme is a pair of colors which are on the opposite of each other on the color wheel.



33.3779, 31.0023, 29.8160



35.7145, 41.6875, 49.3445

Split Complementary

Split-complementary colors differ from the complementary color scheme. The scheme consists of three colors, the original color and two neighbors of the complement color.



27.0076, 31.0023, 43.4898



33.3779, 31.0023, 29.8160



25.6778, 31.0023, 31.9734

Square

The Square scheme is like the rectangle color scheme, but the four colors are evenly spaced on the color wheel.



33.3779, 31.0023, 29.8160



28.0567, 31.0023, 24.1156



25.8737, 31.0023, 38.0292



30.9232, 31.0023, 45.6746

Rectangle

The Rectangle color scheme consists of four colors that form a rectangle on the color wheel.



33.3779, 31.0023, 29.8160



30.7989, 31.0023, 24.0153



25.8737, 31.0023, 38.0292



28.1736, 31.0023, 45.8286

Sweetspot

The Sweet Spot groups the original color and five complimentary colors.



33.3787, 31.0037, 29.8166



72.8481, 74.2518, 78.5671



36.7340, 32.3450, 47.4874



15.6198, 15.8652, 16.7322



86.6293, 91.1408, 99.2523



17.0014, 17.8868, 19.4787

Same Dimension

The Same Dimension uses a secret algorithm to generate beautiful new colors.



33.3787, 31.0037, 29.8166



57.4771, 51.7599, 48.0097



36.4501, 37.1464, 30.8404



8.4964, 8.5054, 8.8464



13.1370, 6.7726, 0.6148



0.4134, 0.2131, 0.0194

Inverse Universe

The Inverse Universe completely reimagines the original color for something new.



35.7145, 41.6875, 49.3445



62.4233, 74.3842, 89.3621



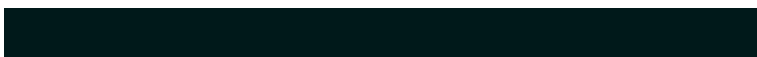
32.1388, 34.5362, 48.1526



8.7426, 9.6314, 10.9046



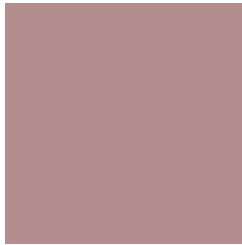
17.1387, 25.0778, 34.0742



0.5393, 0.7891, 1.0721

Previews

White Background



This preview shows how the XYZ color 33.3779, 31.0023, 29.8160 looks on a white background.

Color Contrast Check

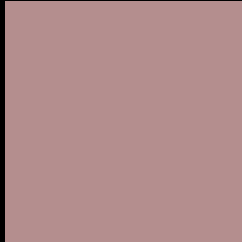
Large Text (above 18pt) WCAG AA × Fail

Any Text WCAG AA × Fail

Large Text (above 18pt) WCAG AAA × Fail

Any Text WCAG AAA × Fail

Black Background



This preview shows how the XYZ color 33.3779, 31.0023, 29.8160 looks on a black background.

Color Contrast Check

Large Text (above 18pt) WCAG AA ✓ Pass

Any Text WCAG AA ✓ Pass

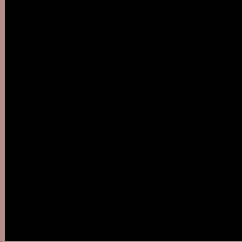
Large Text (above 18pt) WCAG AAA ✓ Pass

Any Text WCAG AAA ✓ Pass

If you want to check with other color combinations, try the [Color Contrast Checker](#).

XYZ 33.3779, 31.0023, 29.8160

Background



This preview shows how black text looks on a background with the XYZ color 33.3779, 31.0023, 29.8160.



This preview shows how white text looks on a background with the XYZ color 33.3779, 31.0023,

Color Blindness Simulation

Color vision deficiency is a very complex topic, and I could not describe the different causes any better than Wikipedia does, so if you want to learn more, you should check out their [article about color blindness](#).

Dichromacy



Original Color

33.3779, 31.0023, 29.8160

Protanopia

29.8506, 31.2084, 32.0543

Deuteranopia

31.6642, 31.0269, 29.5192



Tritanopia

34.1668, 31.1079, 33.4818

Trichromacy



Original Color

33.3779, 31.0023, 29.8160

Protanomaly

31.0106, 31.1167, 31.1597

Deuteranomaly

32.3887, 31.1726, 29.5091

Tritanomaly

33.9262, 31.0116, 32.2147

Monochromacy



Original Color

33.3779, 31.0023, 29.8160

Achromatopsia

30.2779, 31.8547, 34.6897

Achromatomaly

31.2765, 31.4513, 32.8560

CSS Examples

Text

The CSS property to change the color of the text to XYZ 33.3779, 31.0023, 29.8160 is called "color". The color property can be set on classes, ids or directly on the HTML element.

This example shows how text in the color `rgb(180, 142, 142)` looks like.

```
.text, #text, p{  
    color:rgb(180, 142, 142)  
}
```

If you want to add a text shadow in that color use the text-shadow property, you can generate a text shadow directly with our [CSS Text Shadow Generator](#).

Here you see how black text with a 4 pixel rgb(180, 142, 142) colored shadow looks like.

```
.shadow{ text-shadow: 4px 4px 2px rgb(180, 142, 142) }
```

Border

The CSS property to change the border of an element to XYZ 33.3779, 31.0023, 29.8160 is called "border". The border property can be set on classes, ids or directly on the HTML element.

This example shows the color as border, it can be applied via the CSS property "border" or "border-color".

```
.border, #border, table{ border:4px solid rgb(180, 142, 142) }
```


If only the border color should be changed use the property `border-color`.

```
.border{ border-color:rgb(180, 142, 142) }
```

If you want to add a box shadow in that color use:

Here you see how a box with a 4 pixel `rgb(180, 142, 142)` colored shadow looks like.

```
.boxshadow{ -moz-box-shadow:4px 4px 4px  
4px rgb(180, 142, 142); -webkit-box-  
shadow:4px 4px 4px 4px rgb(180, 142, 142);  
box-shadow:4px 4px 4px 4px rgb(180, 142,  
142) }
```

Background

The CSS property to change the background color of an element to XYZ 33.3779, 31.0023, 29.8160 is called "background". The background property can be set on classes, ids or directly on the HTML element.

```
.background, #background, body{  
background: rgb(180, 142, 142) }
```

If only the background color should be changed can be used:

```
.background{ background-color: rgb(180,  
142, 142) }
```

This example shows the color as background, it is applied via the CSS property "background".

To optimize and compress your CSS code, you can use our [online CSS compressor and optimizer](#) based on csstidy. If you want to create a linear or radial gradient as background or border, check our [CSS Gradient Generator](#).

Hey! You found this booklet interesting? Support Converting Colors with the new Membership Option!

The pro membership hides all ads, plus gives you double the colors in the color bucket, and more awesome pro features!

[Learn more, Memberships starting at \\$2.50/m!](#)

**Follow me
on Twitter!**

@ConvertingColor