

Converting Colors

XYZ(33.4099, 29.4137, 23.4793)

Have a look what the booklet for
XYZ(33.4099, 29.4137, 23.4793)
contains.

XYZ(33.4620, 29.4780, 23.3282)	3
<i>Conversions</i>	4
<i>Details</i>	6
<i>Harmonies</i>	12
<i>Previews</i>	24
<i>Color Blindness Simulation</i>	28
<i>CSS Examples</i>	31

Color

**XYZ(33.4620, 29.4780,
23.3282)**

Conversions

Conversions Part 1

Format	Color
Hex	BE867D
RGB	190, 134, 125
RGB Percent	75%, 53%, 49%
CMY	0.2549, 0.4745, 0.5098
CMYK	0.00, 0.29, 0.34, 0.25
HSL	8°, 33%, 62%
HSV	8°, 34%, 75%
XYZ	33.4620, 29.4780, 23.3282
YIQ	149.7180, 36.2650, 9.0730

Conversions

Conversions Part 2

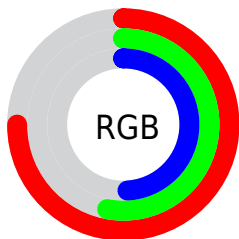
Format	Color
R_{YB}	190, 135, 125
Decimal	12486269
CIE Lab	61.20, 20.29, 13.43
CIE LCh	61, 24.333, 33.501
Yxy	29.4780, 0.3879, 0.3417
Android (android.graphics.Color)	4290676349 (0xFFBE867D)
YUV	149.7180, -12.1860, 35.3273
Hunter-Lab	54.2936, 14.9984, 12.5306

Details

The XYZ color **33.4620, 29.4780, 23.3282** is a dark color, and the websafe version is hex **CC9999**. A complement of this color would be **34.2750, 41.1241, 54.8466**, and the grayscale version is **28.9098, 30.4154, 33.1223**.

A 20% lighter version of the original color is **64.7305, 59.1373, 50.1224**, and **14.4665, 12.0133, 8.3938** is the 20% darker color. If you saturate the color by 10%, you get **30.2726, 24.8593, 16.8387**, and if you desaturate by 10%, it is **37.2353, 34.8927, 31.1584**.

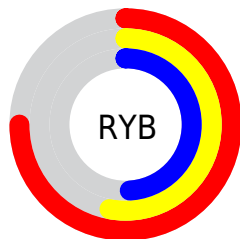
Distribution



Red (75%)

Green (53%)

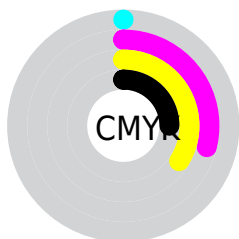
Blue (49%)



Red (75%)

Yellow (53%)

Blue (49%)

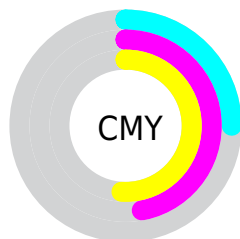


Cyan (0%)

Magenta (29%)

Yellow (34%)

Black (25%)



Cyan (25%)


Magenta (47%)


Yellow (51%)

Brightness & Saturation Gradients


These gradients show how the XYZ color 33.4620, 29.4780, 23.3282 changes by changing the brightness by 10 percent. The first figure shows a shift by +10% for each color and the second figure -10%.


Similar to the brightness gradients but the following saturation gradients show a change of the XYZ color 33.4620, 29.4780, 23.3282 by changing the saturation by 10% instead.


 33.4620, 29.4780,
23.3282


 33.4620, 29.4780,
23.3282


309.3547,
299.4637, 282.5826

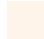
 22.6415, 19.4427,
14.6285


 64.4460, 58.8357,
49.8617

 14.4483, 11.9906,
8.4153

 85.3403, 78.9269,
68.5325

 8.5169, 6.7373,
4.2703


 110.3232,
103.1388, 91.3641

 4.4820, 3.2983,
1.7748

139.7601,
131.8559, 118.7750

 1.9783, 1.2894,
0.4112

174.0163,
165.4625, 151.1838

 0.6217, 0.1330,
0.0000

213.4573,

 0.0000, 0.0000,

204.3431, 189.0089

0.0000

258.4483,
248.8820, 232.6690

■ 33.4620, 29.4780,
23.3282

■ 33.4620, 29.4780,
23.3282

■ 30.2726, 24.8593,
16.8387

■ 37.2353, 34.8927,
31.1584

■ 27.6354, 20.9949,
11.6129

■ 41.6175, 41.1342,
40.3970

■ 25.5194, 17.8459,
7.5686

■ 46.6349, 48.2366,
51.1092

■ 23.8891, 15.3679,
4.6130

■ 52.3114, 56.2311,
63.3556

■ 22.7050, 13.5116,
2.6397

■ 58.6700, 65.1471,
77.1933

■ 21.9204, 12.2208,
1.5201

■ 65.7322, 75.0127,
92.6767

■ 21.6118, 11.7002,
1.1193

■ 73.0318, 85.6602,
107.2926

■ 75.0453, 89.6872,
107.9638

Harmonies

Analogous

The Analogous color harmony consists of three colors that are next to each other on the color wheel.



34.6114, 29.4780, 31.0335



33.4620, 29.4780, 23.3282



30.8507, 29.4780, 18.7801

Triad

The Triadic color harmony groups three colors that are evenly spaced from another and form a triangle on the color wheel.



33.4620, 29.4780, 23.3282



22.8695, 29.4780, 24.8659



28.3950, 29.4780, 53.0668

Complementary

The Complementary color scheme is a pair of colors which are on the opposite of each other on the color wheel.



33.4620, 29.4780, 23.3282



34.2750, 41.1241, 54.8466

Split Complementary

Split-complementary colors differ from the complementary color scheme. The scheme consists of three colors, the original color and two neighbors of the complement color.



25.3641, 29.4780, 50.5674



33.4620, 29.4780, 23.3282



22.3201, 29.4780, 33.1835

Square

The Square scheme is like the rectangle color scheme, but the four colors are evenly spaced on the color wheel.



33.4620, 29.4780, 23.3282



24.7606, 29.4780, 19.5422



23.1989, 29.4780, 42.8255



31.5491, 29.4780, 49.1259

Rectangle

The Rectangle color scheme consists of four colors that form a rectangle on the color wheel.



33.4620, 29.4780, 23.3282



28.7194, 29.4780, 17.5916



23.1989, 29.4780, 42.8255



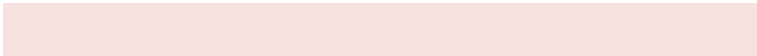
27.3280, 29.4780, 52.9547

Sweetspot

The Sweet Spot groups the original color and five complimentary colors.



33.4628, 29.4794, 23.3288



78.9563, 79.5600, 80.7354



36.9438, 28.9646, 47.5394



17.0600, 17.0767, 17.1363



92.9021, 97.7402, 106.4391



19.4759, 20.4902, 22.3138

Same Dimension

The Same Dimension uses a secret algorithm to generate beautiful new colors.



33.4628, 29.4794, 23.3288



56.2328, 47.0474, 33.2855



38.6036, 39.7612, 25.0424



9.6339, 9.7438, 9.9496



14.4052, 7.8493, 0.7558



0.5991, 0.3772, 0.0412

Inverse Universe

The Inverse Universe completely reimagines the original color for something new.



34.2750, 41.1241, 54.8466



57.9098, 71.2912, 98.9875



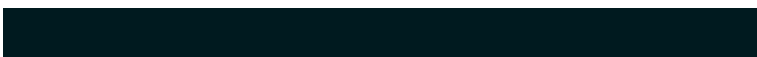
28.4731, 29.5202, 52.9126



9.6929, 10.5780, 12.2031



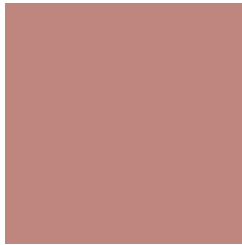
15.0125, 20.1367, 35.4884



0.6195, 0.8517, 1.4006

Previews

White Background



This preview shows how the XYZ color 33.4620, 29.4780, 23.3282 looks on a white background.

Color Contrast Check

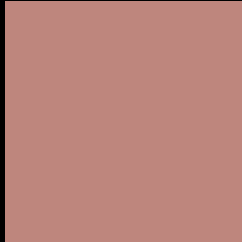
Large Text (above 18pt) WCAG AA ✓ Pass

Any Text WCAG AA ✗ Fail

Large Text (above 18pt) WCAG AAA ✗ Fail

Any Text WCAG AAA ✗ Fail

Black Background



This preview shows how the XYZ color 33.4620, 29.4780, 23.3282 looks on a black background.

Color Contrast Check

Large Text (above 18pt) WCAG AA ✓ Pass

Any Text WCAG AA ✓ Pass

Large Text (above 18pt) WCAG AAA ✓ Pass

Any Text WCAG AAA × Fail

If you want to check with other color combinations, try the [Color Contrast Checker](#).

XYZ 33.4620, 29.4780, 23.3282

Background



This preview shows how black text looks on a background with the XYZ color 33.4620, 29.4780, 23.3282.



This preview shows how white text looks on a background with the XYZ color 33.4620, 29.4780,

Color Blindness Simulation

Color vision deficiency is a very complex topic, and I could not describe the different causes any better than Wikipedia does, so if you want to learn more, you should check out their [article about color blindness](#).

Dichromacy



Original Color

33.4620, 29.4780, 23.3282

Protanopia

28.0812, 29.7158, 26.0855

Deuteranopia

30.0427, 29.4340, 22.8368



Tritanopia

34.8720, 29.6620, 29.4786

Trichromacy



Original Color

33.4620, 29.4780, 23.3282

Protanomaly

29.7213, 29.4454, 24.8859

Deuteranomaly

31.2308, 29.3855, 23.0947

Tritanomaly

34.3173, 29.6290, 27.2028

Monochromacy



Original Color

33.4620, 29.4780, 23.3282

Achromatopsia

28.9890, 30.4987, 33.2131

Achromatomaly

30.2980, 29.8689, 29.3677

CSS Examples

Text

The CSS property to change the color of the text to XYZ 33.4620, 29.4780, 23.3282 is called "color". The color property can be set on classes, ids or directly on the HTML element.

This example shows how text in the color `rgb(190, 134, 125)` looks like.

```
.text, #text, p{  
    color:rgb(190, 134, 125)  
}
```

If you want to add a text shadow in that color use the text-shadow property, you can generate a text shadow directly with our [CSS Text Shadow Generator](#).

Here you see how black text with a 4 pixel rgb(190, 134, 125) colored shadow looks like.

```
.shadow{ text-shadow: 4px 4px 2px rgb(190, 134, 125) }
```

Border

The CSS property to change the border of an element to XYZ 33.4620, 29.4780, 23.3282 is called "border". The border property can be set on classes, ids or directly on the HTML element.

This example shows the color as border, it can be applied via the CSS property "border" or "border-color".

```
.border, #border, table{ border:4px solid rgb(190, 134, 125) }
```


If only the border color should be changed use the property `border-color`.

```
.border{ border-color:rgb(190, 134, 125) }
```

If you want to add a box shadow in that color use:

Here you see how a box with a 4 pixel `rgb(190, 134, 125)` colored shadow looks like.

```
.boxshadow{ -moz-box-shadow:4px 4px 4px  
4px rgb(190, 134, 125); -webkit-box-  
shadow:4px 4px 4px 4px rgb(190, 134, 125);  
box-shadow:4px 4px 4px 4px rgb(190, 134,  
125) }
```

Background

The CSS property to change the background color of an element to XYZ 33.4620, 29.4780, 23.3282 is called "background". The background property can be set on classes, ids or directly on the HTML element.

```
.background, #background, body{  
background: rgb(190, 134, 125) }
```

If only the background color should be changed can be used:

```
.background{ background-color: rgb(190,  
134, 125) }
```

This example shows the color as background, it is applied via the CSS property "background".

To optimize and compress your CSS code, you can use our [online CSS compressor and optimizer](#) based on csstidy. If you want to create a linear or radial gradient as background or border, check our [CSS Gradient Generator](#).

Hey! You found this booklet interesting? Support Converting Colors with the new Membership Option!

The pro membership hides all ads, plus gives you double the colors in the color bucket, and more awesome pro features!

[Learn more, Memberships starting at \\$2.50/m!](#)

**Follow me
on Twitter!**

@ConvertingColor