

Converting Colors

XYZ(33.4314, 20.3048, 21.2308)

Have a look what the booklet for
XYZ(33.4314, 20.3048, 21.2308)
contains.

XYZ(33.4612, 20.3665, 21.2363)	3
<i>Conversions</i>	4
<i>Details</i>	6
<i>Harmonies</i>	12
<i>Previews</i>	24
<i>Color Blindness Simulation</i>	28
<i>CSS Examples</i>	31

Color

**XYZ(33.4612, 20.3665,
21.2363)**

Conversions

Conversions Part 1

Format	Color
Hex	D5497C
RGB	213, 73, 124
RGB Percent	84%, 29%, 49%
CMY	0.1647, 0.7137, 0.5137
CMYK	0.00, 0.66, 0.42, 0.16
HSL	338°, 62%, 56%
HSV	338°, 66%, 84%
XYZ	33.4612, 20.3665, 21.2363
YIQ	120.6740, 67.0690, 45.5410

Conversions

Conversions Part 2

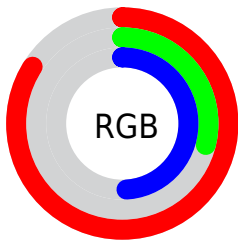
Format	Color
R_{YB}	213, 73, 124
Decimal	13977980
CIE _{Lab}	52.25, 58.87, 1.69
CIE _{LCh}	52, 58.898, 1.640
Yxy	20.3665, 0.4458, 0.2713
Android (android.graphics.Color)	4292168060 (0xFFD5497C)
YUV	120.6740, 1.6397, 80.9699
Hunter-Lab	45.1293, 53.3731, 3.6906

Details

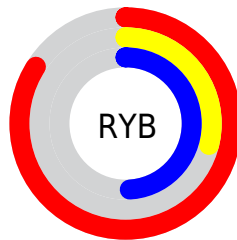
The XYZ color **33.4612, 20.3665, 21.2363** is a dark color, and the websafe version is hex **CC3366**. The color can be described as middle muted rose. A complement of this color would be **33.0648, 51.6141, 42.4061**, and the grayscale version is **18.0497, 18.9897, 20.6797**.

A 20% lighter version of the original color is **56.9267, 40.0951, 45.8131**, and **14.4069, 7.2803, 7.3025** is the 20% darker color. If you saturate the color by 10%, you get **31.4951, 17.7120, 16.6420**, and if you desaturate by 10%, it is **36.0251, 24.0283, 26.6104**.

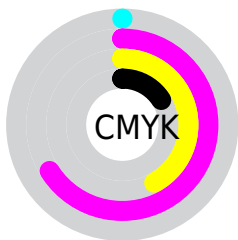
Distribution



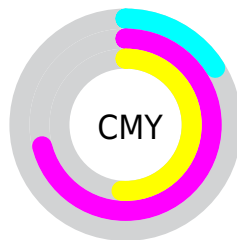
- Red (84%)
- Green (29%)
- Blue (49%)



- Red (84%)
- Yellow (29%)
- Blue (49%)



- Cyan (0%)
- Magenta (66%)
- Yellow (42%)
- Black (16%)



- Cyan (16%)
- Magenta (71%)
- Yellow (51%)

Brightness & Saturation Gradients

These gradients show how the XYZ color 33.4612, 20.3665, 21.2363 changes by changing the brightness by 10 percent. The first figure shows a shift by +10% for each color and the second figure -10%.

Similar to the brightness gradients but the following saturation gradients show a change of the XYZ color 33.4612, 20.3665, 21.2363 by changing the saturation by 10% instead.

■ 33.4612, 20.3665,
21.2363

■ 33.4612, 20.3665,
21.2363

309.3512,
253.8923, 271.3538

■ 22.6409, 12.6617,
13.1039

■ 64.4448, 44.0308,
46.3664

■ 14.4478, 7.1960,
7.3686

■ 85.3388, 60.7591,
64.2011

■ 8.5166, 3.5850,
3.6117

■ 110.3214, 81.2641,
86.1071

■ 4.4818, 1.4442,
1.4149

■ 139.7580,
105.9301, 112.5028

■ 1.9781, 0.2490,
0.1533

■ 174.0139,
135.1415, 143.8068

■ 0.6216, 0.0000,
0.0000

213.4545,

■ 0.0000, 0.0000,

169.2828, 180.4376

0.0000

258.4452,
208.7382, 222.8137

■ 33.4612, 20.3665,
21.2363

■ 33.4612, 20.3665,
21.2363

■ 31.4951, 17.7120,
16.6420

■ 36.0251, 24.0283,
26.6104

■ 30.0690, 15.9570,
12.7843

■ 39.2336, 28.7840,
32.8017

■ 29.1153, 14.9742,
9.6157

■ 43.1306, 34.7145,
39.8459

■ 28.8008, 14.6902,
8.4475

■ 47.7556, 41.8922,
47.7761

■ 53.1448, 50.3835,
56.6236

■ 59.3322, 60.2501,
66.4178

■ 66.3493, 71.5499,
77.1871

■ 74.2263, 84.3373,
88.9582

■ 79.8157, 92.3122,
100.6985

Harmonies

Analogous

The Analogous color harmony consists of three colors that are next to each other on the color wheel.



31.4978, 20.3665, 42.0519



33.4612, 20.3665, 21.2363



31.0397, 20.3665, 8.8928

Triad

The Triadic color harmony groups three colors that are evenly spaced from another and form a triangle on the color wheel.



33.4612, 20.3665, 21.2363



13.8766, 20.3665, 4.1909



14.3434, 20.3665, 66.2796

Complementary

The Complementary color scheme is a pair of colors which are on the opposite of each other on the color wheel.



33.4612, 20.3665, 21.2363



33.0648, 51.6141, 42.4061

Split Complementary

Split-complementary colors differ from the complementary color scheme. The scheme consists of three colors, the original color and two neighbors of the complement color.



11.0503, 20.3665, 44.6316



33.4612, 20.3665, 21.2363



10.8229, 20.3665, 9.8209

Square

The Square scheme is like the rectangle color scheme, but the four colors are evenly spaced on the color wheel.



33.4612, 20.3665, 21.2363



19.0269, 20.3665, 2.7665



9.9063, 20.3665, 23.1423



19.6924, 20.3665, 74.8921

Rectangle

The Rectangle color scheme consists of four colors that form a rectangle on the color wheel.



33.4612, 20.3665, 21.2363



27.5072, 20.3665, 4.9723



9.9063, 20.3665, 23.1423



13.0014, 20.3665, 59.8749

Sweetspot

The Sweet Spot groups the original color and five complimentary colors.



33.4618, 20.3676, 21.2367



76.0951, 69.7506, 78.9658



29.2266, 17.2172, 64.7335



15.8017, 14.1651, 16.1015



0.0000, 0.0000, 0.0000



20.3446, 21.4041, 23.3091

Same Dimension

The Same Dimension uses a secret algorithm to generate beautiful new colors.



33.4618, 20.3676, 21.2367



46.3644, 25.3871, 22.5106



32.4424, 22.2252, 8.8849



12.6083, 12.4948, 13.8778



17.6378, 8.9914, 5.3968



1.1030, 0.5580, 0.5316

Inverse Universe

The Inverse Universe completely reimagines the original color for something new.



33.4618, 20.3676, 21.2367



46.3644, 25.3871, 22.5106



34.1248, 44.9535, 69.8289



12.6083, 12.4948, 13.8778



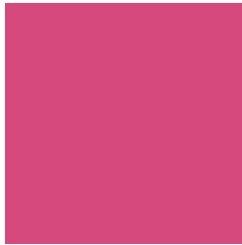
17.6378, 8.9914, 5.3968



1.1030, 0.5580, 0.5316

Previews

White Background



This preview shows how the XYZ color 33.4612, 20.3665, 21.2363 looks on a white background.

Color Contrast Check

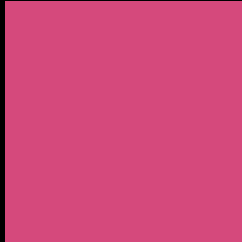
Large Text (above 18pt) WCAG AA ✓ Pass

Any Text WCAG AA × Fail

Large Text (above 18pt) WCAG AAA × Fail

Any Text WCAG AAA × Fail

Black Background



This preview shows how the XYZ color 33.4612, 20.3665, 21.2363 looks on a black background.

Color Contrast Check

Large Text (above 18pt) WCAG AA ✓ Pass

Any Text WCAG AA ✓ Pass

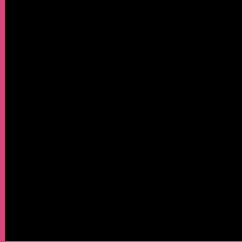
Large Text (above 18pt) WCAG AAA ✓ Pass

Any Text WCAG AAA × Fail

If you want to check with other color combinations, try the [Color Contrast Checker](#).

XYZ 33.4612, 20.3665, 21.2363

Background



This preview shows how black text looks on a background with the XYZ color 33.4612, 20.3665, 21.2363.



This preview shows how white text looks on a background with the XYZ color 33.4612, 20.3665,

Color Blindness Simulation

Color vision deficiency is a very complex topic, and I could not describe the different causes any better than Wikipedia does, so if you want to learn more, you should check out their [article about color blindness](#).

Dichromacy



Original Color

33.4612, 20.3665, 21.2363

Protanopia

20.5953, 20.6334, 33.9075

Deuteranopia

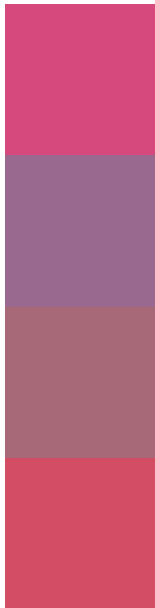
20.8635, 20.5345, 19.6936



Tritanopia

31.2005, 20.2584, 11.0699

Trichromacy



Original Color

33.4612, 20.3665, 21.2363

Protanomaly

23.2225, 18.8891, 28.8076

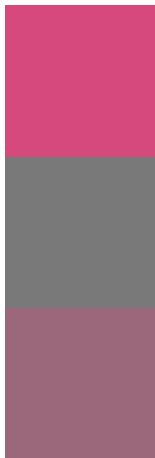
Deuteranomaly

24.2768, 19.4722, 20.2483

Tritanomaly

31.8886, 20.2178, 14.2783

Monochromacy



Original Color

33.4612, 20.3665, 21.2363

Achromatopsia

18.1737, 19.1202, 20.8219

Achromatomaly

21.7896, 18.1758, 20.7722

CSS Examples

Text

The CSS property to change the color of the text to XYZ 33.4612, 20.3665, 21.2363 is called "color". The color property can be set on classes, ids or directly on the HTML element.

This example shows how text in the color `rgb(213, 73, 124)` looks like.

```
.text, #text, p{  
    color:rgb(213, 73, 124)  
}
```

If you want to add a text shadow in that color use the text-shadow property, you can generate a text shadow directly with our [CSS Text Shadow Generator](#).

Here you see how black text with a 4 pixel rgb(213, 73, 124) colored shadow looks like.

```
.shadow{ text-shadow: 4px 4px 2px rgb(213, 73, 124) }
```

Border

The CSS property to change the border of an element to XYZ 33.4612, 20.3665, 21.2363 is called "border". The border property can be set on classes, ids or directly on the HTML element.

This example shows the color as border, it can be applied via the CSS property "border" or "border-color".

```
.border, #border, table{ border:4px solid rgb(213, 73, 124) }
```


If only the border color should be changed use the property `border-color`.

```
.border{ border-color:rgb(213, 73, 124) }
```

If you want to add a box shadow in that color use:

Here you see how a box with a 4 pixel `rgb(213, 73, 124)` colored shadow looks like.

```
.boxshadow{ -moz-box-shadow:4px 4px 4px  
4px rgb(213, 73, 124); -webkit-box-  
shadow:4px 4px 4px 4px rgb(213, 73, 124);  
box-shadow:4px 4px 4px 4px rgb(213, 73,  
124) }
```

Background

The CSS property to change the background color of an element to XYZ 33.4612, 20.3665, 21.2363 is called "background". The background property can be set on classes, ids or directly on the HTML element.

```
.background, #background, body{  
background: rgb(213, 73, 124) }
```

If only the background color should be changed can be used:

```
.background{ background-color: rgb(213, 73,  
124) }
```

This example shows the color as background, it is applied via the CSS property "background".

To optimize and compress your CSS code, you can use our [online CSS compressor and optimizer](#) based on csstidy. If you want to create a linear or radial gradient as background or border, check our [CSS Gradient Generator](#).

Hey! You found this booklet interesting? Support Converting Colors with the new Membership Option!

The pro membership hides all ads, plus gives you double the colors in the color bucket, and more awesome pro features!

[Learn more, Memberships starting at \\$2.50/m!](#)

**Follow me
on Twitter!**

@ConvertingColor