

Converting Colors

XYZ(33.4643, 30.2927, 30.0436)

Have a look what the booklet for
XYZ(33.4643, 30.2927, 30.0436)
contains.

XYZ(33.4819, 30.3935, 30.0884)	3
<i>Conversions</i>	4
<i>Details</i>	6
<i>Harmonies</i>	12
<i>Previews</i>	24
<i>Color Blindness Simulation</i>	28
<i>CSS Examples</i>	31

Color

**XYZ(33.4819, 30.3935,
30.0884)**

Conversions

Conversions Part 1

Format	Color
Hex	B68B8F
RGB	182, 139, 143
RGB Percent	71%, 55%, 56%
CMY	0.2863, 0.4549, 0.4392
CMYK	0.00, 0.24, 0.21, 0.29
HSL	354°, 23%, 63%
HSV	354°, 24%, 71%
XYZ	33.4819, 30.3935, 30.0884
YIQ	152.3130, 24.3440, 10.3600

Conversions

Conversions Part 2

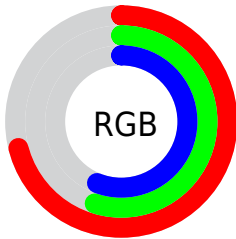
Format	Color
RYB	182, 139, 143
Decimal	11963279
CIELab	61.99, 16.95, 4.20
CIELCh	62, 17.463, 13.916
Yxy	30.3935, 0.3563, 0.3235
Android (android.graphics.Color)	4290153359 (0xFFB68B8F)
YUV	152.3130, -4.5913, 26.0355
Hunter-Lab	55.1303, 11.9291, 6.2326

Details

The XYZ color **33.4819, 30.3935, 30.0884** is a light color, and the websafe version is hex **CC9999**. A complement of this color would be **35.4125, 42.1599, 48.3928**, and the grayscale version is **29.9928, 31.5547, 34.3631**.

A 20% lighter version of the original color is **64.7446, 60.5219, 61.0928**, and **14.4502, 12.5243, 12.0117** is the 20% darker color. If you saturate the color by 10%, you get **29.9029, 25.0915, 23.1728**, and if you desaturate by 10%, it is **37.6854, 36.6493, 38.1209**.

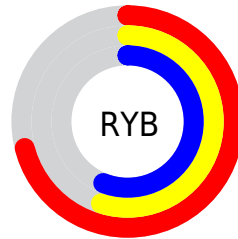
Distribution



Red (71%)

Green (55%)

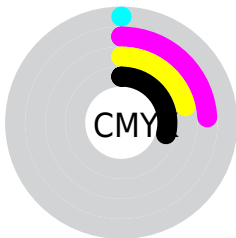
Blue (56%)



Red (71%)

Yellow (55%)

Blue (56%)

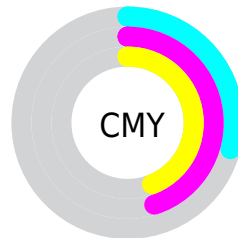


Cyan (0%)

Magenta (24%)

Yellow (21%)

Black (29%)



Cyan (29%)


Magenta (45%)


Yellow (44%)

Brightness & Saturation Gradients


These gradients show how the XYZ color 33.4819, 30.3935, 30.0884 changes by changing the brightness by 10 percent. The first figure shows a shift by +10% for each color and the second figure -10%.


Similar to the brightness gradients but the following saturation gradients show a change of the XYZ color 33.4819, 30.3935, 30.0884 by changing the saturation by 10% instead.


 33.4819, 30.3935,
30.0884


 33.4819, 30.3935,
30.0884


309.4424,
303.7344, 316.5364


 22.6569, 20.1375,
19.6531


 64.4768, 60.2839,
60.8646

 14.4596, 12.4950,
11.9615


 85.3774, 80.6871,
82.0426

 8.5249, 7.0817,
6.5953


 110.3673,
105.2414, 107.6385

 4.4872, 3.5133,
3.1357

139.8117,
134.3313, 138.0709

 1.9813, 1.4052,
1.1643

174.0760,
168.3412, 173.7584

 0.6234, 0.2206,
0.0000

213.5257,

 0.0000, 0.0000,

207.6554, 215.1194

0.0000

258.5260,
252.6583, 262.5726

■ 33.4819, 30.3935,
30.0884

■ 33.4819, 30.3935,
30.0884

■ 29.9029, 25.0915,
23.1728

■ 37.6854, 36.6493,
38.1209

■ 26.9161, 20.6926,
17.3227

■ 42.5385, 43.8981,
47.3147

■ 24.4902, 17.1475,
12.4858

■ 48.0682, 52.1821,
57.7141

■ 22.5900, 14.4008,
8.6041

■ 54.2991, 61.5397,
69.3605

■ 21.1764, 12.3905,
5.6143

■ 61.2544, 72.0073,
82.2935

■ 20.2045, 11.0453,
3.4450

■ 68.9566, 83.6198,
96.5507

■ 19.6212, 10.2798,
2.0140

■ 73.1014, 88.6851,
107.8728

■ 19.3920, 9.9853,
1.4322

Harmonies

Analogous

The Analogous color harmony consists of three colors that are next to each other on the color wheel.



33.4333, 30.3935, 36.7954



33.4819, 30.3935, 30.0884



32.2539, 30.3935, 24.9320

Triad

The Triadic color harmony groups three colors that are evenly spaced from another and form a triangle on the color wheel.



33.4819, 30.3935, 30.0884



25.8767, 30.3935, 24.6475



27.6587, 30.3935, 47.0919

Complementary

The Complementary color scheme is a pair of colors which are on the opposite of each other on the color wheel.



33.4819, 30.3935, 30.0884



35.4125, 42.1599, 48.3928

Split Complementary

Split-complementary colors differ from the complementary color scheme. The scheme consists of three colors, the original color and two neighbors of the complement color.



25.7650, 30.3935, 42.8658



33.4819, 30.3935, 30.0884



24.7748, 30.3935, 29.6484

Square

The Square scheme is like the rectangle color scheme, but the four colors are evenly spaced on the color wheel.



33.4819, 30.3935, 30.0884



27.8189, 30.3935, 22.0899



24.7350, 30.3935, 36.2920



29.9844, 30.3935, 47.2518

Rectangle

The Rectangle color scheme consists of four colors that form a rectangle on the color wheel.



33.4819, 30.3935, 30.0884



30.9131, 30.3935, 22.8116



24.7350, 30.3935, 36.2920



26.9536, 30.3935, 46.0765

Sweetspot

The Sweet Spot groups the original color and five complimentary colors.



33.4827, 30.3949, 30.0890



73.9100, 74.7846, 79.7116



35.9683, 31.2736, 48.3967



16.2069, 16.3419, 17.3833



88.6918, 93.3107, 101.6153



17.8044, 18.7317, 20.3988

Same Dimension

The Same Dimension uses a secret algorithm to generate beautiful new colors.



33.4827, 30.3949, 30.0890



57.4183, 50.2322, 48.2225



35.8745, 35.6544, 29.4191



9.0376, 9.0254, 9.5455



13.7058, 7.0561, 1.0715



0.4945, 0.2533, 0.0977

Inverse Universe

The Inverse Universe completely reimagines the original color for something new.



33.4827, 30.3949, 30.0890



57.4183, 50.2322, 48.2225



32.5112, 35.7057, 49.4344



9.0376, 9.0254, 9.5455



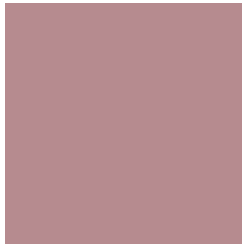
13.7058, 7.0561, 1.0715



0.4945, 0.2533, 0.0977

Previews

White Background



This preview shows how the XYZ color 33.4819, 30.3935, 30.0884 looks on a white background.

Color Contrast Check

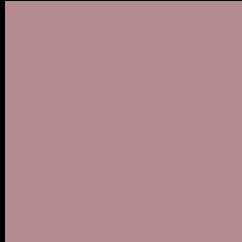
Large Text (above 18pt) WCAG AA × Fail

Any Text WCAG AA × Fail

Large Text (above 18pt) WCAG AAA × Fail

Any Text WCAG AAA × Fail

Black Background



This preview shows how the XYZ color 33.4819, 30.3935, 30.0884 looks on a black background.

Color Contrast Check

Large Text (above 18pt) WCAG AA ✓ Pass

Any Text WCAG AA ✓ Pass

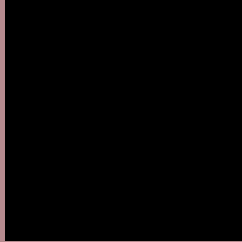
Large Text (above 18pt) WCAG AAA ✓ Pass

Any Text WCAG AAA ✓ Pass

If you want to check with other color combinations, try the [Color Contrast Checker](#).

XYZ 33.4819, 30.3935, 30.0884

Background



This preview shows how black text looks on a background with the XYZ color 33.4819, 30.3935, 30.0884.



This preview shows how white text looks on a background with the XYZ color 33.4819, 30.3935,

Color Blindness Simulation

Color vision deficiency is a very complex topic, and I could not describe the different causes any better than Wikipedia does, so if you want to learn more, you should check out their [article about color blindness](#).

Dichromacy



Original Color

33.4819, 30.3935, 30.0884

Protanopia

29.3091, 30.4371, 32.7640

Deuteranopia

31.1563, 30.5286, 29.8417



Tritanopia

34.0417, 30.4142, 32.5101

Trichromacy



Original Color

33.4819, 30.3935, 30.0884

Protanomaly

30.7017, 30.2499, 31.8244

Deuteranomaly

31.9385, 30.4822, 29.7915

Tritanomaly

33.8834, 30.3508, 31.6762

Monochromacy



Original Color

33.4819, 30.3935, 30.0884

Achromatopsia

29.8446, 31.3989, 34.1934

Achromatomaly

30.9628, 30.8239, 32.7515

CSS Examples

Text

The CSS property to change the color of the text to XYZ 33.4819, 30.3935, 30.0884 is called "color". The color property can be set on classes, ids or directly on the HTML element.

This example shows how text in the color `rgb(182, 139, 143)` looks like.

```
.text, #text, p{  
    color:rgb(182, 139, 143)  
}
```

If you want to add a text shadow in that color use the text-shadow property, you can generate a text shadow directly with our [CSS Text Shadow Generator](#).

Here you see how black text with a 4 pixel rgb(182, 139, 143) colored shadow looks like.

```
.shadow{ text-shadow: 4px 4px 2px rgb(182, 139, 143) }
```

Border

The CSS property to change the border of an element to XYZ 33.4819, 30.3935, 30.0884 is called "border". The border property can be set on classes, ids or directly on the HTML element.

This example shows the color as border, it can be applied via the CSS property "border" or "border-color".

```
.border, #border, table{ border:4px solid rgb(182, 139, 143) }
```


If only the border color should be changed use the property `border-color`.

```
.border{ border-color:rgb(182, 139, 143) }
```

If you want to add a box shadow in that color use:

Here you see how a box with a 4 pixel `rgb(182, 139, 143)` colored shadow looks like.

```
.boxshadow{ -moz-box-shadow:4px 4px 4px  
4px rgb(182, 139, 143); -webkit-box-  
shadow:4px 4px 4px 4px rgb(182, 139, 143);  
box-shadow:4px 4px 4px 4px rgb(182, 139,  
143) }
```

Background

The CSS property to change the background color of an element to XYZ 33.4819, 30.3935, 30.0884 is called "background". The background property can be set on classes, ids or directly on the HTML element.

```
.background, #background, body{  
background: rgb(182, 139, 143) }
```

If only the background color should be changed can be used:

```
.background{ background-color: rgb(182,  
139, 143) }
```

This example shows the color as background, it is applied via the CSS property "background".

To optimize and compress your CSS code, you can use our [online CSS compressor and optimizer](#) based on csstidy. If you want to create a linear or radial gradient as background or border, check our [CSS Gradient Generator](#).

Hey! You found this booklet interesting? Support Converting Colors with the new Membership Option!

The pro membership hides all ads, plus gives you double the colors in the color bucket, and more awesome pro features!

[Learn more, Memberships starting at \\$2.50/m!](#)

**Follow me
on Twitter!**

@ConvertingColor