

Converting Colors

XYZ(33.6219, 33.0225, 28.5334)

Have a look what the booklet for
XYZ(33.6219, 33.0225, 28.5334)
contains.

XYZ(33.6253, 32.9948, 28.6411)	3
<i>Conversions</i>	4
<i>Details</i>	6
<i>Harmonies</i>	12
<i>Previews</i>	24
<i>Color Blindness Simulation</i>	28
<i>CSS Examples</i>	31

Color

**XYZ(33.6253, 32.9948,
28.6411)**

Conversions

Conversions Part 1

Format	Color
Hex	B1968A
RGB	177, 150, 138
RGB Percent	69%, 59%, 54%
CMY	0.3059, 0.4117, 0.4588
CMYK	0.00, 0.15, 0.22, 0.31
HSL	18°, 20%, 62%
HSV	18°, 22%, 69%
XYZ	33.6253, 32.9948, 28.6411
YIQ	156.7050, 19.9440, 1.9920

Conversions

Conversions Part 2

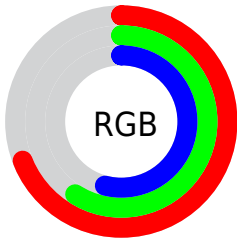
Format	Color
RYB	177, 155, 138
Decimal	11638410
CIELab	64.16, 8.12, 10.05
CIELCh	64, 12.927, 51.061
Yxy	32.9948, 0.3530, 0.3464
Android (android.graphics.Color)	4289828490 (0xFFB1968A)
YUV	156.7050, -9.2216, 17.7987
Hunter-Lab	57.4411, 3.9697, 10.6458

Details

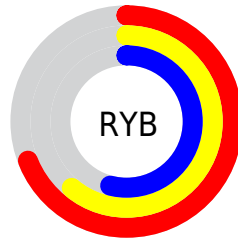
The XYZ color **33.6253, 32.9948, 28.6411** is a light color, and the websafe version is hex **CC9999**. A complement of this color would be **31.8719, 35.4870, 46.7652**, and the grayscale version is **31.9499, 33.6137, 36.6054**.

A 20% lighter version of the original color is **64.6011, 64.2710, 58.2909**, and **14.5355, 13.9133, 11.1520** is the 20% darker color. If you saturate the color by 10%, you get **30.5930, 28.8165, 21.8149**, and if you desaturate by 10%, it is **37.0727, 37.6686, 36.6368**.

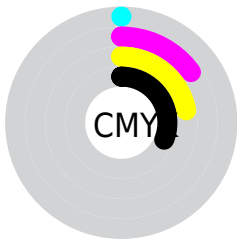
Distribution



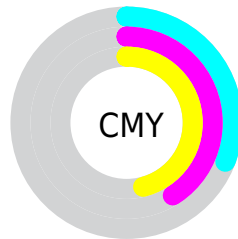
- Red (69%)
- Green (59%)
- Blue (54%)



- Red (69%)
- Yellow (61%)
- Blue (54%)



- Cyan (0%)
- Magenta (15%)
- Yellow (22%)
- Black (31%)





- Cyan (31%)
- Magenta (41%)
- Yellow (46%)

Brightness & Saturation Gradients


These gradients show how the XYZ color 33.6253, 32.9948, 28.6411 changes by changing the brightness by 10 percent. The first figure shows a shift by +10% for each color and the second figure -10%.


Similar to the brightness gradients but the following saturation gradients show a change of the XYZ color 33.6253, 32.9948, 28.6411 by changing the saturation by 10% instead.


 33.6253, 32.9948,
28.6411


 33.6253, 32.9948,
28.6411


310.0734,
315.6263, 309.5256


 22.7674, 22.1225,
18.5662


 64.6987, 64.3674,
58.5417

 14.5416, 13.9469,
11.1837


 85.6450, 85.6365,
79.2046

 8.5825, 8.0837,
6.0748


 110.6847,
111.1399, 104.2339

 4.5248, 4.1486,
2.8211

140.1833,
141.2621, 134.0481

 2.0031, 1.7570,
1.0040

174.5062,
176.3874, 169.0659

 0.6357, 0.4602,
0.0000

214.0185,

 0.0000, 0.0000,

216.9003, 209.7057

0.0000

259.0858,
263.1851, 256.3861

■ 33.6253, 32.9948,
28.6411

■ 33.6253, 32.9948,
28.6411

■ 30.5930, 28.8165,
21.8149

■ 37.0727, 37.6686,
36.6368

■ 27.9569, 25.1126,
16.1009

■ 40.9479, 42.8490,
45.8515

■ 25.7001, 21.8670,
11.4399

■ 45.2665, 48.5527,
56.3345

■ 23.8040, 19.0613,
7.7664

■ 50.0422, 54.7939,
68.1315

■ 22.2476, 16.6752,
5.0075

■ 55.2884, 61.5866,
81.2861

■ 21.0080, 14.6871,
3.0800

■ 61.0177, 68.9438,
95.8399

■ 20.0584, 13.0729,
1.8852

■ 66.1111, 76.4261,
105.8750

■ 19.4731, 12.0302,
1.2957

■ 69.7561, 83.7161,
107.0900

■ 71.9416, 88.0872,
107.8185

Harmonies

Analogous

The Analogous color harmony consists of three colors that are next to each other on the color wheel.



34.7615, 32.9948, 32.4233



33.6253, 32.9948, 28.6411



31.9107, 32.9948, 26.8589

Triad

The Triadic color harmony groups three colors that are evenly spaced from another and form a triangle on the color wheel.



33.6253, 32.9948, 28.6411



28.0102, 32.9948, 34.3820



32.6426, 32.9948, 46.1785

Complementary

The Complementary color scheme is a pair of colors which are on the opposite of each other on the color wheel.



33.6253, 32.9948, 28.6411



31.8719, 35.4870, 46.7652

Split Complementary

Split-complementary colors differ from the complementary color scheme. The scheme consists of three colors, the original color and two neighbors of the complement color.



30.8168, 32.9948, 46.8329



33.6253, 32.9948, 28.6411



28.1890, 32.9948, 39.6717

Square

The Square scheme is like the rectangle color scheme, but the four colors are evenly spaced on the color wheel.



33.6253, 32.9948, 28.6411



28.7015, 32.9948, 29.9550



29.1999, 32.9948, 44.3513



34.1790, 32.9948, 42.6414

Rectangle

The Rectangle color scheme consists of four colors that form a rectangle on the color wheel.



33.6253, 32.9948, 28.6411



30.6901, 32.9948, 26.9123



29.1999, 32.9948, 44.3513



32.0408, 32.9948, 46.7556

Sweetspot

The Sweet Spot groups the original color and five complimentary colors.



33.6262, 32.9963, 28.6418



69.7084, 71.9065, 73.4460



34.0392, 30.2520, 39.7862



15.0210, 15.4683, 15.7127



84.5950, 89.0005, 96.9216



16.2198, 17.0645, 18.5832

Same Dimension

The Same Dimension uses a secret algorithm to generate beautiful new colors.



33.6262, 32.9963, 28.6418



57.7375, 55.6862, 45.6514



36.9445, 39.6329, 29.7479



8.7026, 8.9178, 8.9152



14.1570, 8.8126, 0.9548



0.4985, 0.3835, 0.0477

Inverse Universe

The Inverse Universe completely reimagines the original color for something new.



31.8719, 35.4870, 46.7652



54.0814, 60.8677, 83.3936



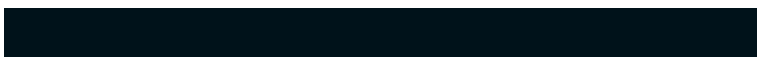
28.6655, 29.0742, 45.6964



8.5176, 9.1813, 10.8296



10.8945, 12.5893, 31.9928



0.3916, 0.4938, 1.0229

Previews

White Background



This preview shows how the XYZ color 33.6253, 32.9948, 28.6411 looks on a white background.

Color Contrast Check

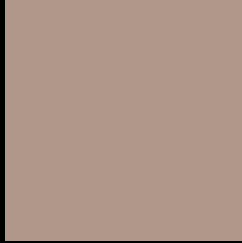
Large Text (above 18pt) WCAG AA × Fail

Any Text WCAG AA × Fail

Large Text (above 18pt) WCAG AAA × Fail

Any Text WCAG AAA × Fail

Black Background



This preview shows how the XYZ color 33.6253, 32.9948, 28.6411 looks on a black background.

Color Contrast Check

Large Text (above 18pt) WCAG AA ✓ Pass

Any Text WCAG AA ✓ Pass

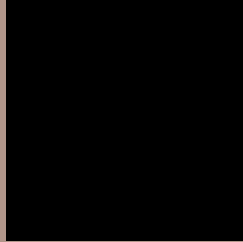
Large Text (above 18pt) WCAG AAA ✓ Pass

Any Text WCAG AAA ✓ Pass

If you want to check with other color combinations, try the [Color Contrast Checker](#).

XYZ 33.6253, 32.9948, 28.6411

Background



This preview shows how black text looks on a background with the XYZ color 33.6253, 32.9948, 28.6411.



This preview shows how white text looks on a background with the XYZ color 33.6253, 32.9948,

Color Blindness Simulation

Color vision deficiency is a very complex topic, and I could not describe the different causes any better than Wikipedia does, so if you want to learn more, you should check out their [article about color blindness](#).

Dichromacy



Original Color

33.6253, 32.9948, 28.6411

Protanopia

31.4294, 33.0472, 29.9215

Deuteranopia

33.6253, 32.9948, 28.6411



Tritanopia

35.1957, 32.9198, 36.8469

Trichromacy



Original Color

33.6253, 32.9948, 28.6411

Protanomaly

32.0612, 32.8914, 29.4698

Deuteranomaly

33.6253, 32.9948, 28.6411

Tritanomaly

34.5359, 32.8792, 33.8042

Monochromacy



Original Color

33.6253, 32.9948, 28.6411

Achromatopsia

32.0474, 33.7164, 36.7171

Achromatomaly

32.3705, 33.2057, 33.5574

CSS Examples

Text

The CSS property to change the color of the text to XYZ 33.6253, 32.9948, 28.6411 is called "color". The color property can be set on classes, ids or directly on the HTML element.

This example shows how text in the color `rgb(177, 150, 138)` looks like.

```
.text, #text, p{  
    color:rgb(177, 150, 138)  
}
```

If you want to add a text shadow in that color use the text-shadow property, you can generate a text shadow directly with our [CSS Text Shadow Generator](#).

Here you see how black text with a 4 pixel rgb(177, 150, 138) colored shadow looks like.

```
.shadow{ text-shadow: 4px 4px 2px rgb(177, 150, 138) }
```

Border

The CSS property to change the border of an element to XYZ 33.6253, 32.9948, 28.6411 is called "border". The border property can be set on classes, ids or directly on the HTML element.

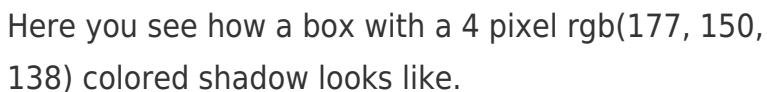
This example shows the color as border, it can be applied via the CSS property "border" or "border-color".

```
.border, #border, table{ border:4px solid rgb(177, 150, 138) }
```


If only the border color should be changed use the property `border-color`.

```
.border{ border-color:rgb(177, 150, 138) }
```

If you want to add a box shadow in that color use:



Here you see how a box with a 4 pixel `rgb(177, 150, 138)` colored shadow looks like.

```
.boxshadow{ -moz-box-shadow:4px 4px 4px 4px rgb(177, 150, 138); -webkit-box-shadow:4px 4px 4px 4px rgb(177, 150, 138); box-shadow:4px 4px 4px 4px rgb(177, 150, 138) }
```

Background

The CSS property to change the background color of an element to XYZ 33.6253, 32.9948, 28.6411 is called "background". The background property can be set on classes, ids or directly on the HTML element.

```
.background, #background, body{  
background: rgb(177, 150, 138) }
```

If only the background color should be changed can be used:

```
.background{ background-color: rgb(177,  
150, 138) }
```

This example shows the color as background, it is applied via the CSS property "background".

To optimize and compress your CSS code, you can use our [online CSS compressor and optimizer](#) based on csstidy. If you want to create a linear or radial gradient as background or border, check our [CSS Gradient Generator](#).

Hey! You found this booklet interesting? Support Converting Colors with the new Membership Option!

The pro membership hides all ads, plus gives you double the colors in the color bucket, and more awesome pro features!

[Learn more, Memberships starting at \\$2.50/m!](#)

**Follow me
on Twitter!**

@ConvertingColor