

Converting Colors

XYZ(33.6701, 33.8680, 25.4868)

Have a look what the booklet for
XYZ(33.6701, 33.8680, 25.4868)
contains.

XYZ(33.7138, 33.8324, 25.5223)	3
<i>Conversions</i>	4
<i>Details</i>	6
<i>Harmonies</i>	12
<i>Previews</i>	24
<i>Color Blindness Simulation</i>	28
<i>CSS Examples</i>	31

Color

**XYZ(33.7138, 33.8324,
25.5223)**

Conversions

Conversions Part 1

Format	Color
Hex	B29981
RGB	178, 153, 129
RGB Percent	70%, 60%, 51%
CMY	0.3020, 0.4000, 0.4941
CMYK	0.00, 0.14, 0.28, 0.30
HSL	29°, 24%, 60%
HSV	29°, 28%, 70%
XYZ	33.7138, 33.8324, 25.5223
YIQ	157.7390, 22.6040, -2.1640

Conversions

Conversions Part 2

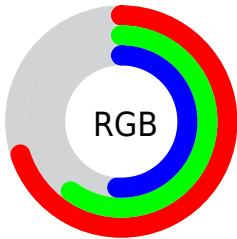
Format	Color
RYB	178, 176, 129
Decimal	11704705
CIELab	64.83, 5.54, 16.05
CIElCh	65, 16.974, 70.968
Yxy	33.8324, 0.3622, 0.3635
Android (android.graphics.Color)	4289894785 (0xFFB29981)
YUV	157.7390, -14.1683, 17.7689
Hunter-Lab	58.1656, 1.6718, 14.7003

Details

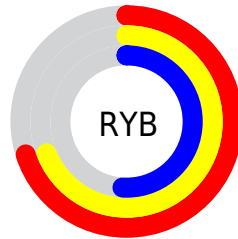
The XYZ color **33.7138, 33.8324, 25.5223** is a light color, and the websafe version is hex **CC9999**. A complement of this color would be **28.6446, 30.9919, 46.5920**, and the grayscale version is **32.4368, 34.1261, 37.1633**.

A 20% lighter version of the original color is **64.6880, 65.4955, 53.4884**, and **14.6568, 14.4419, 9.6045** is the 20% darker color. If you saturate the color by 10%, you get **31.2023, 30.5407, 19.3475**, and if you desaturate by 10%, it is **36.5464, 37.4359, 32.8218**.

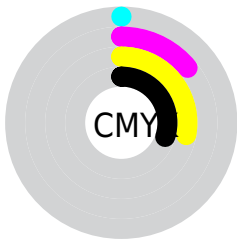
Distribution



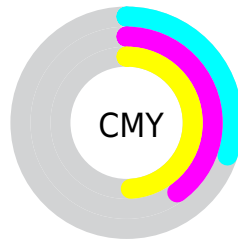
- Red (70%)
- Green (60%)
- Blue (51%)



- Red (70%)
- Yellow (69%)
- Blue (51%)



- Cyan (0%)
- Magenta (14%)
- Yellow (28%)
- Black (30%)



- Cyan (30%)
- Magenta (40%)
- Yellow (49%)

Brightness & Saturation Gradients

These gradients show how the XYZ color 33.7138, 33.8324, 25.5223 changes by changing the brightness by 10 percent. The first figure shows a shift by +10% for each color and the second figure -10%.

Similar to the brightness gradients but the following saturation gradients show a change of the XYZ color 33.7138, 33.8324, 25.5223 by changing the saturation by 10% instead.

■ 33.7138, 33.8324,
25.5223

■ 33.7138, 33.8324,
25.5223

310.4624,
319.3841, 293.9596

■ 22.8357, 22.7649,
16.2441

■ 64.8356, 65.6730,
53.4779

■ 14.5922, 14.4200,
9.5408

■ 85.8100, 87.2148,
72.9923

■ 8.6182, 8.4133,
4.9940

■ 110.8805,
113.0168, 96.7558

■ 4.5481, 4.3606,
2.1850

140.4125,
143.4635, 125.1871

■ 2.0166, 1.8772,
0.6657

174.7713,
178.9391, 158.7045

■ 0.6433, 0.5346,
0.0000

214.3224,

■ 0.0000, 0.0000,

219.8282, 197.7268

0.0000

259.4309,
266.5150, 242.6723

■ 33.7138, 33.8324,
25.5223

■ 33.7138, 33.8324,
25.5223

■ 31.2023, 30.5407,
19.3475

■ 36.5464, 37.4359,
32.8218

■ 28.9960, 27.5468,
14.2382

■ 39.7096, 41.3554,
41.2969

■ 27.0815, 24.8425,
10.1328

■ 43.2161, 45.6008,
50.9979

■ 25.4433, 22.4173,
6.9625

■ 47.0769, 50.1802,
61.9717

■ 24.0639, 20.2597,
4.6498

■ 51.3024, 55.1012,
74.2624

■ 22.9237, 18.3571,
3.1043

■ 55.9026, 60.3715,
87.9123

■ 21.9936, 16.6932,
2.1893

■ 60.8873, 65.9981,
102.9616

■ 21.7843, 16.3133,
2.0006

■ 63.5108, 70.8862,
104.9428

■ 66.0407, 75.9460,
105.7861

Harmonies

Analogous

The Analogous color harmony consists of three colors that are next to each other on the color wheel.



35.8376, 33.8324, 28.6988



33.7138, 33.8324, 25.5223



31.2708, 33.8324, 25.1406

Triad

The Triadic color harmony groups three colors that are evenly spaced from another and form a triangle on the color wheel.



33.7138, 33.8324, 25.5223



27.7598, 33.8324, 39.4583



35.3375, 33.8324, 47.9645

Complementary

The Complementary color scheme is a pair of colors which are on the opposite of each other on the color wheel.



33.7138, 33.8324, 25.5223



28.6446, 30.9919, 46.5920

Split Complementary

Split-complementary colors differ from the complementary color scheme. The scheme consists of three colors, the original color and two neighbors of the complement color.



33.0592, 33.8324, 51.6950



33.7138, 33.8324, 25.5223



28.7369, 33.8324, 46.3860

Square

The Square scheme is like the rectangle color scheme, but the four colors are evenly spaced on the color wheel.



33.7138, 33.8324, 25.5223



27.9152, 33.8324, 32.6204



30.6483, 33.8324, 51.0832



36.8074, 33.8324, 41.4037

Rectangle

The Rectangle color scheme consists of four colors that form a rectangle on the color wheel.



33.7138, 33.8324, 25.5223



29.7985, 33.8324, 26.4597



30.6483, 33.8324, 51.0832



34.6361, 33.8324, 49.6265

Sweetspot

The Sweet Spot groups the original color and five complimentary colors.



33.7147, 33.8339, 25.5230



71.6426, 74.5441, 73.8872



32.0699, 27.5096, 34.3303



15.6747, 16.2724, 15.8335



86.6293, 91.1408, 99.2523



17.0014, 17.8868, 19.4787

Same Dimension

The Same Dimension uses a secret algorithm to generate beautiful new colors.



33.7147, 33.8339, 25.5230



58.3180, 57.6803, 39.2790



38.0812, 42.5670, 26.9785



8.8286, 9.1696, 8.9571



15.6495, 11.7976, 1.4524



0.5509, 0.4881, 0.0652

Inverse Universe

The Inverse Universe completely reimagines the original color for something new.



28.6446, 30.9919, 46.5920



47.5929, 51.6679, 83.8457



25.0478, 23.7985, 45.3931



8.3884, 8.9229, 10.7865



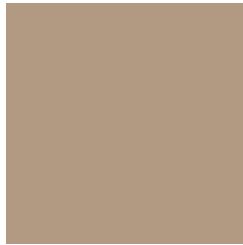
8.4777, 7.7558, 31.1872



0.3249, 0.3604, 1.0007

Previews

White Background



This preview shows how the XYZ color 33.7138, 33.8324, 25.5223 looks on a white background.

Color Contrast Check

Large Text (above 18pt) WCAG AA × Fail

Any Text WCAG AA × Fail

Large Text (above 18pt) WCAG AAA × Fail

Any Text WCAG AAA × Fail

Black Background



This preview shows how the XYZ color 33.7138, 33.8324, 25.5223 looks on a black background.

Color Contrast Check

Large Text (above 18pt) WCAG AA ✓ Pass

Any Text WCAG AA ✓ Pass

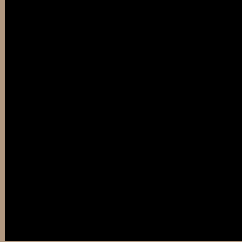
Large Text (above 18pt) WCAG AAA ✓ Pass

Any Text WCAG AAA ✓ Pass

If you want to check with other color combinations, try the [Color Contrast Checker](#).

XYZ 33.7138, 33.8324, 25.5223

Background



This preview shows how black text looks on a background with the XYZ color 33.7138, 33.8324, 25.5223.



This preview shows how white text looks on a background with the XYZ color 33.7138, 33.8324,

25.5223.

Color Blindness Simulation

Color vision deficiency is a very complex topic, and I could not describe the different causes any better than Wikipedia does, so if you want to learn more, you should check out their [article about color blindness](#).

Dichromacy



Original Color

33.7138, 33.8324, 25.5223

Protanopia

31.8796, 33.8596, 26.3281

Deuteranopia

34.3205, 33.6633, 25.4577



Tritanopia

36.3840, 33.9780, 37.8985

Trichromacy



Original Color

33.7138, 33.8324, 25.5223

Protanomaly

32.4953, 33.9347, 25.9565

Deuteranomaly

34.2467, 33.8652, 25.5005

Tritanomaly

35.3872, 33.8064, 33.0939

Monochromacy



Original Color

33.7138, 33.8324, 25.5223

Achromatopsia

32.4990, 34.1914, 37.2345

Achromatomaly

32.6720, 33.8829, 32.4218

CSS Examples

Text

The CSS property to change the color of the text to XYZ 33.7138, 33.8324, 25.5223 is called "color". The color property can be set on classes, ids or directly on the HTML element.

This example shows how text in the color `rgb(178, 153, 129)` looks like.

```
.text, #text, p{  
    color:rgb(178, 153, 129)  
}
```

If you want to add a text shadow in that color use the text-shadow property, you can generate a text shadow directly with our [CSS Text Shadow Generator](#).

Here you see how black text with a 4 pixel rgb(178, 153, 129) colored shadow looks like.

```
.shadow{ text-shadow: 4px 4px 2px rgb(178, 153, 129) }
```

Border

The CSS property to change the border of an element to XYZ 33.7138, 33.8324, 25.5223 is called "border". The border property can be set on classes, ids or directly on the HTML element.

This example shows the color as border, it can be applied via the CSS property "border" or "border-color".

```
.border, #border, table{ border:4px solid rgb(178, 153, 129) }
```


If only the border color should be changed use the property `border-color`.

```
.border{ border-color:rgb(178, 153, 129) }
```

If you want to add a box shadow in that color use:

Here you see how a box with a 4 pixel `rgb(178, 153, 129)` colored shadow looks like.

```
.boxshadow{ -moz-box-shadow:4px 4px 4px  
4px rgb(178, 153, 129); -webkit-box-  
shadow:4px 4px 4px 4px rgb(178, 153, 129);  
box-shadow:4px 4px 4px 4px rgb(178, 153,  
129) }
```

Background

The CSS property to change the background color of an element to XYZ 33.7138, 33.8324, 25.5223 is called "background". The background property can be set on classes, ids or directly on the HTML element.

```
.background, #background, body{  
background: rgb(178, 153, 129) }
```

If only the background color should be changed can be used:

```
.background{ background-color: rgb(178,  
153, 129) }
```

This example shows the color as background, it is applied via the CSS property "background".

To optimize and compress your CSS code, you can use our [online CSS compressor and optimizer](#) based on csstidy. If you want to create a linear or radial gradient as background or border, check our [CSS Gradient Generator](#).

Hey! You found this booklet interesting? Support Converting Colors with the new Membership Option!

The pro membership hides all ads, plus gives you double the colors in the color bucket, and more awesome pro features!

[Learn more, Memberships starting at \\$2.50/m!](#)

**Follow me
on Twitter!**

@ConvertingColor