

Converting Colors

XYZ(33.7017, 28.2008, 20.7689)

Have a look what the booklet for
XYZ(33.7017, 28.2008, 20.7689)
contains.

XYZ(33.6243, 28.2225, 20.8148)	3
<i>Conversions</i>	4
<i>Details</i>	6
<i>Harmonies</i>	12
<i>Previews</i>	24
<i>Color Blindness Simulation</i>	28
<i>CSS Examples</i>	31

Color

**XYZ(33.6243, 28.2225,
20.8148)**

Conversions

Conversions Part 1

Format	Color
Hex	C47F76
RGB	196, 127, 118
RGB Percent	77%, 50%, 46%
CMY	0.2314, 0.5019, 0.5373
CMYK	0.00, 0.35, 0.40, 0.23
HSL	7°, 40%, 62%
HSV	7°, 40%, 77%
XYZ	33.6243, 28.2225, 20.8148
YIQ	146.6050, 44.0130, 11.8290

Conversions

Conversions Part 2

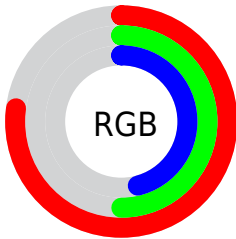
Format	Color
RYB	196, 128, 118
Decimal	12877686
CIELab	60.09, 25.65, 15.98
CIELCh	60, 30.221, 31.913
Yxy	28.2225, 0.4068, 0.3414
Android (android.graphics.Color)	4291067766 (0xFFC47F76)
YUV	146.6050, -14.1023, 43.3194
Hunter-Lab	53.1249, 20.0095, 13.9570

Details

The XYZ color **33.6243, 28.2225, 20.8148** is a dark color, and the websafe version is hex **CC9999**. A complement of this color would be **35.2045, 43.3758, 58.7413**, and the grayscale version is **27.6144, 29.0525, 31.6382**.

A 20% lighter version of the original color is **64.4500, 56.6156, 45.5612**, and **14.5746, 11.3254, 7.2122** is the 20% darker color. If you saturate the color by 10%, you get **30.5287, 23.7055, 14.6214**, and if you desaturate by 10%, it is **37.3487, 33.6096, 28.4124**.

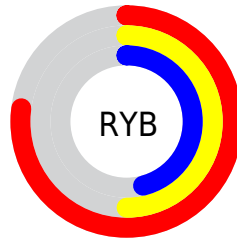
Distribution



Red (77%)

Green (50%)

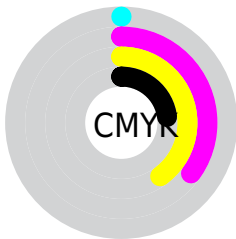
Blue (46%)



Red (77%)

Yellow (50%)

Blue (46%)

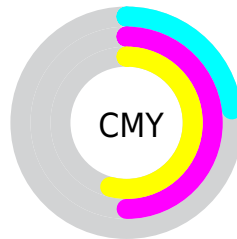


Cyan (0%)

Magenta (35%)

Yellow (40%)

Black (23%)



Cyan (23%)


Magenta (50%)


Yellow (54%)

Brightness & Saturation Gradients

These gradients show how the XYZ color 33.6243, 28.2225, 20.8148 changes by changing the brightness by 10 percent. The first figure shows a shift by +10% for each color and the second figure -10%.


Similar to the brightness gradients but the following saturation gradients show a change of the XYZ color 33.6243, 28.2225, 20.8148 by changing the saturation by 10% instead.


 33.6243, 28.2225,
20.8148


 33.6243, 28.2225,
20.8148


310.0690,
293.5286, 269.0413

 22.7666, 18.4935,
12.7988


 64.6972, 56.8395,
45.6559

 14.5410, 11.3048,
7.1610


 85.6431, 76.4962,
63.3180

 8.5821, 6.2723,
3.4830


 110.6825,
100.2309, 85.0326

 4.5246, 3.0113,
1.3463

140.1807,
128.4281, 111.2182

 2.0030, 1.1377,
0.0993

174.5032,
161.4720, 142.2933

 0.6356, 0.0099,
0.0000

214.0151,

 0.0000, 0.0000,

199.7471, 178.6765

0.0000

259.0819,
243.6379, 220.7863

■ 33.6243, 28.2225,
20.8148

■ 33.6243, 28.2225,
20.8148

■ 30.5287, 23.7055,
14.6214

■ 37.3487, 33.6096,
28.4124

■ 28.0248, 20.0091,
9.7443

■ 41.7319, 39.9050,
37.4912

■ 26.0752, 17.0849,
6.0884


■ 46.8044, 47.1492,
48.1248


■ 24.6369, 14.8778,
3.5453


■ 52.5944, 55.3795,
60.3814


■ 23.6608, 13.3254,
1.9869

■ 59.1283, 64.6310,
74.3249

 23.0731, 12.3487,
1.1790

 66.4313, 74.9368,
90.0161

 23.0639, 12.3338,
1.1651

 74.4951, 86.3161,
107.3421

 76.5749, 90.4757,
108.0354

Harmonies

Analogous

The Analogous color harmony consists of three colors that are next to each other on the color wheel.



34.9392, 28.2225, 30.0261



33.6243, 28.2225, 20.8148



30.4695, 28.2225, 15.5435

Triad

The Triadic color harmony groups three colors that are evenly spaced from another and form a triangle on the color wheel.



33.6243, 28.2225, 20.8148



20.8001, 28.2225, 21.7761



27.0729, 28.2225, 57.2162

Complementary

The Complementary color scheme is a pair of colors which are on the opposite of each other on the color wheel.



33.6243, 28.2225, 20.8148



35.2045, 43.3758, 58.7413

Split Complementary

Split-complementary colors differ from the complementary color scheme. The scheme consists of three colors, the original color and two neighbors of the complement color.



23.4827, 28.2225, 53.5309



33.6243, 28.2225, 20.8148



20.0751, 28.2225, 31.4438

Square

The Square scheme is like the rectangle color scheme, but the four colors are evenly spaced on the color wheel.



33.6243, 28.2225, 20.8148



23.0926, 28.2225, 15.9979



21.0097, 28.2225, 43.3784



30.9386, 28.2225, 52.5113

Rectangle

The Rectangle color scheme consists of four colors that form a rectangle on the color wheel.



33.6243, 28.2225, 20.8148



27.8814, 28.2225, 14.1347



21.0097, 28.2225, 43.3784



25.7949, 28.2225, 56.9149

Sweetspot

The Sweet Spot groups the original color and five complimentary colors.



33.6250, 28.2239, 20.8153



82.4737, 82.1132, 82.3084



38.3421, 28.3323, 51.1379



17.3848, 17.1933, 17.0545



0.0000, 0.0000, 0.0000



20.3446, 21.4041, 23.3091

Same Dimension

The Same Dimension uses a secret algorithm to generate beautiful new colors.



33.6250, 28.2239, 20.8153



55.8379, 43.7260, 27.5427



39.4541, 39.8820, 22.7584



10.1648, 10.2610, 10.5067



14.8528, 7.9913, 0.7596



0.6735, 0.4089, 0.0434

Inverse Universe

The Inverse Universe completely reimagines the original color for something new.



35.2045, 43.3758, 58.7413



59.0766, 75.0076, 105.9720



28.2143, 29.3955, 56.4113



10.2661, 11.2235, 12.9101



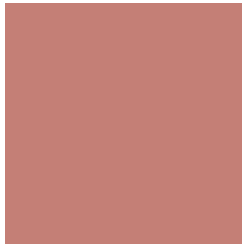
16.0907, 21.9379, 36.9430



0.7239, 1.0053, 1.6058

Previews

White Background



This preview shows how the XYZ color 33.6243, 28.2225, 20.8148 looks on a white background.

Color Contrast Check

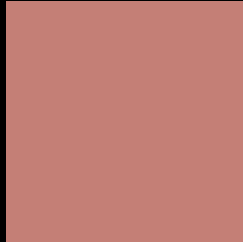
Large Text (above 18pt) WCAG AA ✓ Pass

Any Text WCAG AA × Fail

Large Text (above 18pt) WCAG AAA × Fail

Any Text WCAG AAA × Fail

Black Background



This preview shows how the XYZ color 33.6243, 28.2225, 20.8148 looks on a black background.

Color Contrast Check

Large Text (above 18pt) WCAG AA ✓ Pass

Any Text WCAG AA ✓ Pass

Large Text (above 18pt) WCAG AAA ✓ Pass

Any Text WCAG AAA × Fail

If you want to check with other color combinations, try the [Color Contrast Checker](#).

XYZ 33.6243, 28.2225, 20.8148

Background



This preview shows how black text looks on a background with the XYZ color 33.6243, 28.2225, 20.8148.



This preview shows how white text looks on a background with the XYZ color 33.6243, 28.2225,

Color Blindness Simulation

Color vision deficiency is a very complex topic, and I could not describe the different causes any better than Wikipedia does, so if you want to learn more, you should check out their [article about color blindness](#).

Dichromacy



Original Color

33.6243, 28.2225, 20.8148

Protanopia

26.9051, 28.4585, 24.1537

Deuteranopia

28.7472, 28.1612, 20.4435



Tritanopia

34.6626, 28.2588, 26.1818

Trichromacy



Original Color

33.6243, 28.2225, 20.8148

Protanomaly

28.8750, 27.9570, 22.9431

Deuteranomaly

30.4653, 28.1960, 20.6663

Tritanomaly

34.3831, 28.3505, 24.0821

Monochromacy



Original Color

33.6243, 28.2225, 20.8148

Achromatopsia

27.7328, 29.1771, 31.7738

Achromatomaly

29.3391, 28.5331, 27.2536

CSS Examples

Text

The CSS property to change the color of the text to XYZ 33.6243, 28.2225, 20.8148 is called "color". The color property can be set on classes, ids or directly on the HTML element.

This example shows how text in the color `rgb(196, 127, 118)` looks like.

```
.text, #text, p{  
    color:rgb(196, 127, 118)  
}
```

If you want to add a text shadow in that color use the text-shadow property, you can generate a text shadow directly with our [CSS Text Shadow Generator](#).

Here you see how black text with a 4 pixel rgb(196, 127, 118) colored shadow looks like.

```
.shadow{ text-shadow: 4px 4px 2px rgb(196, 127, 118) }
```

Border

The CSS property to change the border of an element to XYZ 33.6243, 28.2225, 20.8148 is called "border". The border property can be set on classes, ids or directly on the HTML element.

This example shows the color as border, it can be applied via the CSS property "border" or "border-color".

```
.border, #border, table{ border:4px solid rgb(196, 127, 118) }
```


If only the border color should be changed use the property border-color.

```
.border{ border-color:rgb(196, 127, 118) }
```

If you want to add a box shadow in that color use:

Here you see how a box with a 4 pixel rgb(196, 127, 118) colored shadow looks like.

```
.boxshadow{ -moz-box-shadow:4px 4px 4px  
4px rgb(196, 127, 118); -webkit-box-  
shadow:4px 4px 4px 4px rgb(196, 127, 118);  
box-shadow:4px 4px 4px 4px rgb(196, 127,  
118) }
```

Background

The CSS property to change the background color of an element to XYZ 33.6243, 28.2225, 20.8148 is called "background". The background property can be set on classes, ids or directly on the HTML element.

```
.background, #background, body{  
background: rgb(196, 127, 118) }
```

If only the background color should be changed can be used:

```
.background{ background-color: rgb(196,  
127, 118) }
```

This example shows the color as background, it is applied via the CSS property "background".

To optimize and compress your CSS code, you can use our [online CSS compressor and optimizer](#) based on csstidy. If you want to create a linear or radial gradient as background or border, check our [CSS Gradient Generator](#).

Hey! You found this booklet interesting? Support Converting Colors with the new Membership Option!

The pro membership hides all ads, plus gives you double the colors in the color bucket, and more awesome pro features!

[Learn more, Memberships starting at \\$2.50/m!](#)

**Follow me
on Twitter!**

@ConvertingColor