

# Converting Colors

XYZ(33.8053, 30.7786, 25.9777)

Have a look what the booklet for  
XYZ(33.8053, 30.7786, 25.9777)  
contains.

<b>XYZ(33.7926, 30.8612, 26.0055)</b> .....	3
<b><i>Conversions</i></b> .....	4
<b><i>Details</i></b> .....	6
<b><i>Harmonies</i></b> .....	12
<b><i>Previews</i></b> .....	24
<b><i>Color Blindness Simulation</i></b> .....	28
<b><i>CSS Examples</i></b> .....	31

# Color

**XYZ(33.7926, 30.8612,  
26.0055)**

# Conversions

## Conversions Part 1

Format	Color
Hex	BA8C84
RGB	186, 140, 132
RGB Percent	73%, 55%, 52%
CMY	0.2706, 0.4510, 0.4823
CMYK	0.00, 0.25, 0.29, 0.27
HSL	9°, 28%, 62%
HSV	9°, 29%, 73%
XYZ	33.7926, 30.8612, 26.0055
YIQ	152.8420, 29.9840, 7.2640

# Conversions

## Conversions Part 2

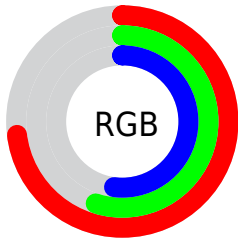
<b>Format</b>	<b>Color</b>
R <sub>Y</sub> B	186, 141, 132
Decimal	12225668
CIE Lab	62.39, 16.32, 11.07
CIE LCh	62, 19.722, 34.136
Yxy	30.8612, 0.3727, 0.3404
Android (android.graphics.Color)	4290415748 (0xFFBA8C84)
YUV	152.8420, -10.2751, 29.0796
Hunter-Lab	55.5529, 11.3634, 11.1321

# Details

The XYZ color **33.7926, 30.8612, 26.0055** is a light color, and the websafe version is hex **CC9999**. A complement of this color would be **34.2985, 40.2901, 52.4235**, and the grayscale version is **30.2444, 31.8194, 34.6513**.

A 20% lighter version of the original color is **65.0109, 61.1410, 54.2739**, and **14.7332, 12.8424, 9.8859** is the 20% darker color. If you saturate the color by 10%, you get **30.4809, 26.0963, 19.1720**, and if you desaturate by 10%, it is **37.6662, 36.3864, 34.1466**.

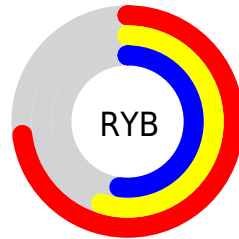
# Distribution



Red (73%)

Green (55%)

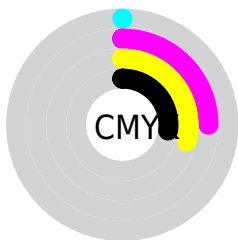
Blue (52%)



Red (73%)

Yellow (55%)

Blue (52%)

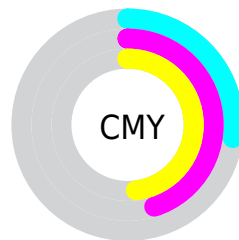


Cyan (0%)

Magenta (25%)

Yellow (29%)

Black (27%)



Cyan (27%)

Magenta (45%)


Yellow (48%)


# Brightness & Saturation Gradients

These gradients show how the XYZ color 33.7926, 30.8612, 26.0055 changes by changing the brightness by 10 percent. The first figure shows a shift by +10% for each color and the second figure -10%.


Similar to the brightness gradients but the following saturation gradients show a change of the XYZ color 33.7926, 30.8612, 26.0055 by changing the saturation by 10% instead.





 33.7926, 30.8612,  
26.0055


 33.7926, 30.8612,  
26.0055


310.8085,  
305.8984, 296.4154


 22.8964, 20.4932,  
16.6020


 64.9574, 61.0215,  
54.2680

 14.6373, 12.7540,  
9.7922


 85.9569, 81.5825,  
73.9641

 8.6499, 7.2594,  
5.1576


 111.0547,  
106.3100, 97.9280

 4.5688, 3.6249,  
2.2797

140.6164,  
135.5884, 126.5784

 2.0287, 1.4660,  
0.7198

175.0073,  
169.8020, 160.3338

 0.6500, 0.2646,  
0.0000

214.5927,

 0.0000, 0.0000,

209.3353, 199.6128

0.0000

259.7380,  
254.5726, 244.8338

■ 33.7926, 30.8612,  
26.0055

■ 33.7926, 30.8612,  
26.0055

■ 30.4809, 26.0963,  
19.1720

■ 37.6662, 36.3864,  
34.1466

■ 27.7025, 22.0542,  
13.5759

■ 42.1238, 42.6988,  
43.6566

■ 25.4297, 18.7006,  
9.1435

■ 47.1892, 49.8291,  
54.5954

■ 23.6315, 15.9970,  
5.7922

■ 52.8842, 57.8051,  
67.0185

■ 22.2735, 13.9006,  
3.4287

■ 59.2295, 66.6534,  
80.9786

■ 21.3159, 12.3637,  
1.9437

■ 66.2448, 76.3995,  
96.5258

■ 20.7015, 11.3268,  
1.1469

■ 72.7677, 86.5950,  
107.4870

■ 20.6548, 11.2493,  
1.0827

■ 74.0597, 89.1791,  
107.9177

# Harmonies

## Analogous

The Analogous color harmony consists of three colors that are next to each other on the color wheel.



34.7595, 30.8612, 32.5527



33.7926, 30.8612, 26.0055



31.6308, 30.8612, 22.0282

# Triad

The Triadic color harmony groups three colors that are evenly spaced from another and form a triangle on the color wheel.



33.7926, 30.8612, 26.0055



24.9494, 30.8612, 27.5856



29.7047, 30.8612, 50.5129

# Complementary

The Complementary color scheme is a pair of colors which are on the opposite of each other on the color wheel.



33.7926, 30.8612, 26.0055



34.2985, 40.2901, 52.4235

# Split Complementary

Split-complementary colors differ from the complementary color scheme. The scheme consists of three colors, the original color and two neighbors of the complement color.



27.1486, 30.8612, 48.6529



33.7926, 30.8612, 26.0055



24.5023, 30.8612, 34.6748

# Square

The Square scheme is like the rectangle color scheme, but the four colors are evenly spaced on the color wheel.



33.7926, 30.8612, 26.0055



26.5438, 30.8612, 22.8386



25.2835, 30.8612, 42.5515



32.3103, 30.8612, 47.3076



# Rectangle

The Rectangle color scheme consists of four colors that form a rectangle on the color wheel.



33.7926, 30.8612, 26.0055



29.8605, 30.8612, 20.9911



25.2835, 30.8612, 42.5515



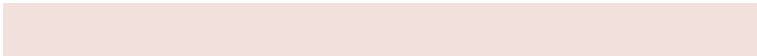
28.8110, 30.8612, 50.4622

# Sweetspot

The Sweet Spot groups the original color and five complimentary colors.



33.7934, 30.8626, 26.0061



76.2509, 77.2515, 78.9135



36.6176, 30.1885, 46.4390



16.5167, 16.6236, 16.7881



90.7827, 95.5105, 104.0109



18.6292, 19.5994, 21.3438



# Same Dimension

The Same Dimension uses a secret algorithm to generate beautiful new colors.



33.7934, 30.8626, 26.0061



57.2095, 50.1323, 38.7669



38.0873, 39.4504, 27.4374



9.1092, 9.2213, 9.4067



13.9309, 7.6381, 0.7401



0.5254, 0.3378, 0.0375



# Inverse Universe

The Inverse Universe completely reimagines the original color for something new.



34.2985, 40.2901, 52.4235



58.2682, 70.0577, 94.6528



29.5747, 30.8426, 50.8489



9.1502, 9.9776, 11.5230



14.2812, 19.0220, 34.1720

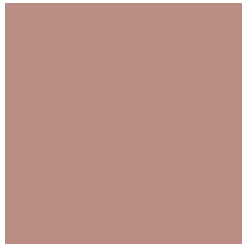


0.5346, 0.7329, 1.2150



# Previews

## White Background



This preview shows how the XYZ color 33.7926, 30.8612, 26.0055 looks on a white background.

## Color Contrast Check

Large Text (above 18pt) WCAG AA × Fail

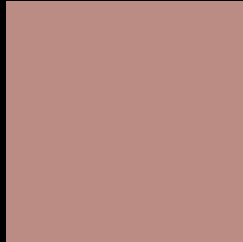
Any Text WCAG AA × Fail

Large Text (above 18pt) WCAG AAA × Fail

Any Text WCAG AAA × Fail



# Black Background



This preview shows how the XYZ color 33.7926, 30.8612, 26.0055 looks on a black background.

## Color Contrast Check

Large Text (above 18pt) WCAG AA ✓ Pass

Any Text WCAG AA ✓ Pass

Large Text (above 18pt) WCAG AAA ✓ Pass

Any Text WCAG AAA ✓ Pass

If you want to check with other color combinations, try the [Color Contrast Checker](#).

**XYZ 33.7926, 30.8612, 26.0055**

## **Background**



This preview shows how black text looks on a background with the XYZ color 33.7926, 30.8612, 26.0055.



This preview shows how white text looks on a background with the XYZ color 33.7926, 30.8612,



# Color Blindness Simulation

Color vision deficiency is a very complex topic, and I could not describe the different causes any better than Wikipedia does, so if you want to learn more, you should check out their [article about color blindness](#).

## Dichromacy



### Original Color

33.7926, 30.8612, 26.0055

### Protanopia

29.4866, 31.1075, 28.1171

### Deuteranopia

31.4557, 30.7737, 25.7548



## Tritanopia

35.1728, 31.0064, 32.1480

# Trichromacy



## Original Color

33.7926, 30.8612, 26.0055

## Protanomaly

30.9553, 30.9415, 27.2625

## Deuteranomaly

32.2793, 30.7486, 25.7065

## Tritanomaly

34.6086, 30.9830, 29.7474

# Monochromacy



## Original Color

33.7926, 30.8612, 26.0055

## Achromatopsia

30.2779, 31.8547, 34.6897

## Achromatomaly

31.2178, 31.2235, 31.1694

# CSS Examples

## Text

The CSS property to change the color of the text to XYZ 33.7926, 30.8612, 26.0055 is called "color". The color property can be set on classes, ids or directly on the HTML element.

This example shows how text in the color `rgb(186, 140, 132)` looks like.

```
.text, #text, p{  
    color:rgb(186, 140, 132)  
}
```

If you want to add a text shadow in that color use the text-shadow property, you can generate a text shadow directly with our [CSS Text Shadow Generator](#).

Here you see how black text with a 4 pixel rgb(186, 140, 132) colored shadow looks like.

```
.shadow{ text-shadow: 4px 4px 2px rgb(186, 140, 132) }
```

## Border

The CSS property to change the border of an element to XYZ 33.7926, 30.8612, 26.0055 is called "border". The border property can be set on classes, ids or directly on the HTML element.

This example shows the color as border, it can be applied via the CSS property "border" or "border-color".

```
.border, #border, table{ border:4px solid rgb(186, 140, 132) }
```



If only the border color should be changed use the property `border-color`.

```
.border{ border-color:rgb(186, 140, 132) }
```

If you want to add a box shadow in that color use:

Here you see how a box with a 4 pixel `rgb(186, 140, 132)` colored shadow looks like.

```
.boxshadow{ -moz-box-shadow:4px 4px 4px  
4px rgb(186, 140, 132); -webkit-box-  
shadow:4px 4px 4px 4px rgb(186, 140, 132);  
box-shadow:4px 4px 4px 4px rgb(186, 140,  
132) }
```

# Background

The CSS property to change the background color of an element to XYZ 33.7926, 30.8612, 26.0055 is called "background". The background property can be set on classes, ids or directly on the HTML element.

```
.background, #background, body{  
background: rgb(186, 140, 132) }
```

If only the background color should be changed can be used:

```
.background{ background-color: rgb(186,  
140, 132) }
```

This example shows the color as background, it is applied via the CSS property "background".

To optimize and compress your CSS code, you can use our [online CSS compressor and optimizer](#) based on csstidy. If you want to create a linear or radial gradient as background or border, check our [CSS Gradient Generator](#).

Hey! You found this booklet interesting? Support Converting Colors with the new Membership Option!

The pro membership hides all ads, plus gives you double the colors in the color bucket, and more awesome pro features!

**[Learn more, Memberships starting at \\$2.50/m!](#)**

**Follow me  
on Twitter!**

@ConvertingColor