

Converting Colors

XYZ(33.8387, 33.4900, 32.9853)

Have a look what the booklet for
XYZ(33.8387, 33.4900, 32.9853)
contains.

XYZ(33.8866, 33.5106, 33.1160)	3
<i>Conversions</i>	4
<i>Details</i>	6
<i>Harmonies</i>	12
<i>Previews</i>	24
<i>Color Blindness Simulation</i>	28
<i>CSS Examples</i>	31

Color

**XYZ(33.8866, 33.5106,
33.1160)**

Conversions

Conversions Part 1

Format	Color
Hex	AD9895
RGB	173, 152, 149
RGB Percent	68%, 60%, 58%
CMY	0.3216, 0.4039, 0.4157
CMYK	0.00, 0.12, 0.14, 0.32
HSL	8°, 13%, 63%
HSV	8°, 14%, 68%
XYZ	33.8866, 33.5106, 33.1160
YIQ	157.9370, 13.4790, 3.5190

Conversions

Conversions Part 2

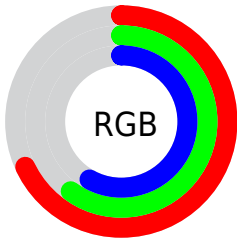
Format	Color
RYB	173, 152, 149
Decimal	11376789
CIELab	64.57, 7.25, 4.42
CIELCh	65, 8.487, 31.365
Yxy	33.5106, 0.3371, 0.3334
Android (android.graphics.Color)	4289566869 (0xFFAD9895)
YUV	157.9370, -4.4059, 13.2103
Hunter-Lab	57.8883, 3.1855, 6.6040

Details

The XYZ color **33.8866, 33.5106, 33.1160** is a light color, and the websafe version is hex **999999**. A complement of this color would be **34.3118, 38.1554, 45.0917**, and the grayscale version is **32.4866, 34.1785, 37.2203**.

A 20% lighter version of the original color is **65.1639, 65.1124, 65.6334**, and **14.6040, 14.1823, 13.5230** is the 20% darker color. If you saturate the color by 10%, you get **30.3052, 28.3961, 25.6065**, and if you desaturate by 10%, it is **37.9886, 39.3371, 41.8121**.

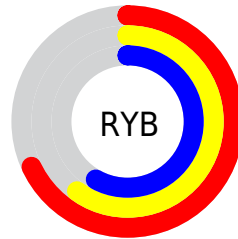
Distribution



Red (68%)

Green (60%)

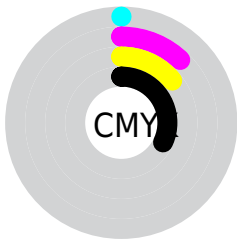
Blue (58%)



Red (68%)

Yellow (60%)

Blue (58%)

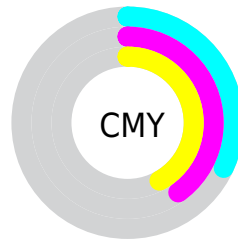


Cyan (0%)

Magenta (12%)

Yellow (14%)

Black (32%)



Cyan (32%)

Magenta (40%)

Yellow (42%)

Brightness & Saturation Gradients

These gradients show how the XYZ color 33.8866, 33.5106, 33.1160 changes by changing the brightness by 10 percent. The first figure shows a shift by +10% for each color and the second figure -10%.

Similar to the brightness gradients but the following saturation gradients show a change of the XYZ color 33.8866, 33.5106, 33.1160 by changing the saturation by 10% instead.

■ 33.8866, 33.5106,
33.1160

■ 33.8866, 33.5106,
33.1160

311.2209,
317.9443, 330.8201

■ 22.9690, 22.5179,
21.9435

■ 65.1027, 65.1719,
65.6747

■ 14.6912, 14.2379,
13.6175

■ 86.1320, 86.6092,
87.8979

■ 8.6878, 8.2863,
7.7194

111.2624,
112.2969, 114.6418

■ 4.5936, 4.2787,
3.8307

140.8595,
142.6194, 146.3249

■ 2.0431, 1.8307,
1.5330

175.2886,
177.9609, 183.3658

■ 0.6580, 0.5062,
0.2423

214.9149,

■ 0.0000, 0.0000,

218.7060, 226.1829

0.0000

260.1039,
265.2390, 275.1948

■ 33.8866, 33.5106,
33.1160

■ 33.8866, 33.5106,
33.1160

■ 30.3052, 28.3961,
25.6065

■ 37.9886, 39.3371,
41.8121

■ 27.2207, 23.9621,
19.2300

■ 42.6280, 45.8969,
51.7409

■ 24.6120, 20.1810,
13.9321

■ 47.8243, 53.2158,
62.9486

■ 22.4551, 17.0221,
9.6530

■ 53.5951, 61.3170,
75.4786

■ 20.7241, 14.4517,
6.3270

■ 59.9574, 70.2229,
89.3720

■ 19.3902, 12.4333,
3.8808

■ 66.9274, 79.9548,
104.6682

■ 18.4213, 10.9261,
2.2304

■ 71.0437, 87.6243,
107.7765

■ 17.7797, 9.8834,
1.2752

■ 17.5139, 9.4447,
0.8999

Harmonies

Analogous

The Analogous color harmony consists of three colors that are next to each other on the color wheel.



34.2428, 33.5106, 36.3282



33.8866, 33.5106, 33.1160



32.9830, 33.5106, 30.9268

Triad

The Triadic color harmony groups three colors that are evenly spaced from another and form a triangle on the color wheel.



33.8866, 33.5106, 33.1160



29.8449, 33.5106, 33.3754



31.9065, 33.5106, 43.5897

Complementary

The Complementary color scheme is a pair of colors which are on the opposite of each other on the color wheel.



33.8866, 33.5106, 33.1160



34.3118, 38.1554, 45.0917

Split Complementary

Split-complementary colors differ from the complementary color scheme. The scheme consists of three colors, the original color and two neighbors of the complement color.



30.7448, 33.5106, 42.6774



33.8866, 33.5106, 33.1160



29.5729, 33.5106, 36.6469

Square

The Square scheme is like the rectangle color scheme, but the four colors are evenly spaced on the color wheel.



33.8866, 33.5106, 33.1160



30.6508, 33.5106, 31.0697



29.8983, 33.5106, 40.0801



33.0818, 33.5106, 42.5008

Rectangle

The Rectangle color scheme consists of four colors that form a rectangle on the color wheel.



33.8866, 33.5106, 33.1160



32.2027, 33.5106, 30.2669



29.8983, 33.5106, 40.0801



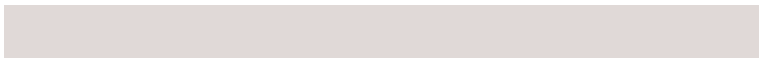
31.5015, 33.5106, 43.5066

Sweetspot

The Sweet Spot groups the original color and five complimentary colors.



33.8875, 33.5121, 33.1167



67.8812, 70.2320, 74.5544



35.2560, 33.2895, 42.6971



14.6281, 15.0872, 15.9382



82.5889, 86.8899, 94.6231



15.4596, 16.2647, 17.7123

Same Dimension

The Same Dimension uses a secret algorithm to generate beautiful new colors.



33.8875, 33.5121, 33.1167



58.3907, 56.7398, 54.4693



35.8984, 37.5339, 33.7870



8.0830, 8.1709, 8.3645



12.8906, 6.9867, 0.6692



0.3834, 0.2439, 0.0269

Inverse Universe

The Inverse Universe completely reimagines the original color for something new.



34.3118, 38.1554, 45.0917



59.3152, 66.8649, 80.5857



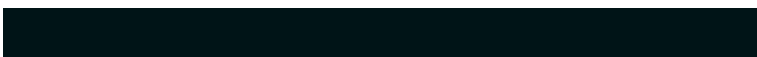
32.1987, 33.9292, 44.3874



8.1496, 8.8985, 10.2407



13.7418, 18.6175, 31.9138



0.4057, 0.5647, 0.8956

Previews

White Background



This preview shows how the XYZ color 33.8866, 33.5106, 33.1160 looks on a white background.

Color Contrast Check

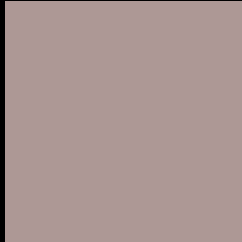
Large Text (above 18pt) WCAG AA × Fail

Any Text WCAG AA × Fail

Large Text (above 18pt) WCAG AAA × Fail

Any Text WCAG AAA × Fail

Black Background



This preview shows how the XYZ color 33.8866, 33.5106, 33.1160 looks on a black background.

Color Contrast Check

Large Text (above 18pt) WCAG AA ✓ Pass

Any Text WCAG AA ✓ Pass

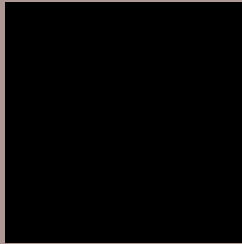
Large Text (above 18pt) WCAG AAA ✓ Pass

Any Text WCAG AAA ✓ Pass

If you want to check with other color combinations, try the [Color Contrast Checker](#).

XYZ 33.8866, 33.5106, 33.1160

Background



This preview shows how black text looks on a background with the XYZ color 33.8866, 33.5106, 33.1160.



This preview shows how white text looks on a background with the XYZ color 33.8866, 33.5106,

Color Blindness Simulation

Color vision deficiency is a very complex topic, and I could not describe the different causes any better than Wikipedia does, so if you want to learn more, you should check out their [article about color blindness](#).

Dichromacy



Original Color

33.8866, 33.5106, 33.1160

Protanopia

32.1723, 33.5884, 34.0657

Deuteranopia

34.1706, 33.4171, 33.0829



Tritanopia

35.1071, 33.5353, 38.8050

Trichromacy



Original Color

33.8866, 33.5106, 33.1160

Protanomaly

32.7434, 33.6440, 33.6223

Deuteranomaly

33.9470, 33.3018, 33.0725

Tritanomaly

34.6080, 33.5662, 36.5532

Monochromacy



Original Color

33.8866, 33.5106, 33.1160

Achromatopsia

32.4990, 34.1914, 37.2345

Achromatomaly

32.9091, 33.9300, 35.8250

CSS Examples

Text

The CSS property to change the color of the text to XYZ 33.8866, 33.5106, 33.1160 is called "color". The color property can be set on classes, ids or directly on the HTML element.

This example shows how text in the color `rgb(173, 152, 149)` looks like.

```
.text, #text, p{  
    color:rgb(173, 152, 149)  
}
```

If you want to add a text shadow in that color use the text-shadow property, you can generate a text shadow directly with our [CSS Text Shadow Generator](#).

Here you see how black text with a 4 pixel rgb(173, 152, 149) colored shadow looks like.

```
.shadow{ text-shadow: 4px 4px 2px rgb(173, 152, 149) }
```

Border

The CSS property to change the border of an element to XYZ 33.8866, 33.5106, 33.1160 is called "border". The border property can be set on classes, ids or directly on the HTML element.

This example shows the color as border, it can be applied via the CSS property "border" or "border-color".

```
.border, #border, table{ border:4px solid rgb(173, 152, 149) }
```


If only the border color should be changed use the property `border-color`.

```
.border{ border-color:rgb(173, 152, 149) }
```

If you want to add a box shadow in that color use:

Here you see how a box with a 4 pixel `rgb(173, 152, 149)` colored shadow looks like.

```
.boxshadow{ -moz-box-shadow:4px 4px 4px  
4px rgb(173, 152, 149); -webkit-box-  
shadow:4px 4px 4px 4px rgb(173, 152, 149);  
box-shadow:4px 4px 4px 4px rgb(173, 152,  
149) }
```

Background

The CSS property to change the background color of an element to XYZ 33.8866, 33.5106, 33.1160 is called "background". The background property can be set on classes, ids or directly on the HTML element.

```
.background, #background, body{  
background: rgb(173, 152, 149) }
```

If only the background color should be changed can be used:

```
.background{ background-color: rgb(173,  
152, 149) }
```

This example shows the color as background, it is applied via the CSS property "background".

To optimize and compress your CSS code, you can use our [online CSS compressor and optimizer](#) based on csstidy. If you want to create a linear or radial gradient as background or border, check our [CSS Gradient Generator](#).

Hey! You found this booklet interesting? Support Converting Colors with the new Membership Option!

The pro membership hides all ads, plus gives you double the colors in the color bucket, and more awesome pro features!

[Learn more, Memberships starting at \\$2.50/m!](#)

**Follow me
on Twitter!**

@ConvertingColor