

Converting Colors

XYZ(33.8662, 31.1755, 29.0332)

Have a look what the booklet for
XYZ(33.8662, 31.1755, 29.0332)
contains.

XYZ(33.9351, 31.3067, 29.0652)	3
<i>Conversions</i>	4
<i>Details</i>	6
<i>Harmonies</i>	12
<i>Previews</i>	24
<i>Color Blindness Simulation</i>	28
<i>CSS Examples</i>	31

Color

**XYZ(33.9351, 31.3067,
29.0652)**

Conversions

Conversions Part 1

Format	Color
Hex	B78E8C
RGB	183, 142, 140
RGB Percent	72%, 56%, 55%
CMY	0.2824, 0.4431, 0.4510
CMYK	0.00, 0.22, 0.23, 0.28
HSL	3°, 23%, 63%
HSV	3°, 23%, 72%
XYZ	33.9351, 31.3067, 29.0652
YIQ	154.0310, 25.0780, 8.0700

Conversions

Conversions Part 2

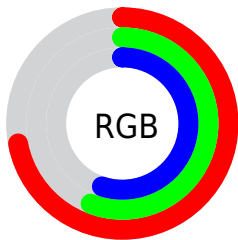
Format	Color
R _Y B	183, 142, 140
Decimal	12029580
CIE Lab	62.77, 15.20, 7.03
CIE LCh	63, 16.748, 24.807
Yxy	31.3067, 0.3598, 0.3320
Android (android.graphics.Color)	4290219660 (0xFFB78E8C)
YUV	154.0310, -6.9173, 25.4058
Hunter-Lab	55.9524, 10.3435, 8.3677

Details

The XYZ color **33.9351, 31.3067, 29.0652** is a light color, and the websafe version is hex **CC9999**. A complement of this color would be **35.8861, 42.0412, 51.0235**, and the grayscale version is **30.7511, 32.3526, 35.2320**.

A 20% lighter version of the original color is **65.4127, 61.9002, 59.5392**, and **14.7259, 13.0596, 11.4175** is the 20% darker color. If you saturate the color by 10%, you get **30.3006, 26.0204, 21.7408**, and if you desaturate by 10%, it is **38.2021, 37.4983, 37.7083**.

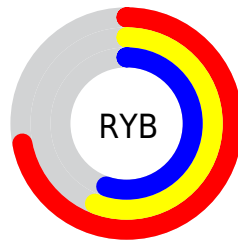
Distribution



Red (72%)

Green (56%)

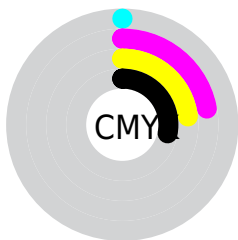
Blue (55%)



Red (72%)

Yellow (56%)

Blue (55%)

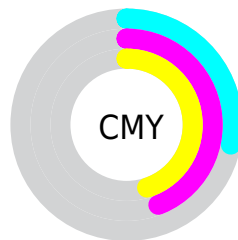


Cyan (0%)

Magenta (22%)

Yellow (23%)

Black (28%)



Cyan (28%)


Magenta (44%)


Yellow (45%)

Brightness & Saturation Gradients


These gradients show how the XYZ color 33.9351, 31.3067, 29.0652 changes by changing the brightness by 10 percent. The first figure shows a shift by +10% for each color and the second figure -10%.


Similar to the brightness gradients but the following saturation gradients show a change of the XYZ color 33.9351, 31.3067, 29.0652 by changing the saturation by 10% instead.


 33.9351, 31.3067,
29.0652


 33.9351, 31.3067,
29.0652


311.4336,
307.9488, 311.5930


 23.0064, 20.8325,
18.8841


 65.1777, 61.7226,
59.2241

 14.7190, 13.0016,
11.4106


 86.2223, 82.4331,
80.0390

 8.7074, 7.4297,
6.2261


 111.3696,
107.3245, 105.2356

 4.6064, 3.7322,
2.9120

140.9849,
136.7812, 135.2324

 2.0506, 1.5249,
1.0499

175.4336,
171.1876, 170.4481

 0.6621, 0.3062,
0.0000

215.0810,

 0.0000, 0.0000,

210.9281, 211.3010

0.0000

260.2926,
256.3870, 258.2098

■ 33.9351, 31.3067,
29.0652

■ 33.9351, 31.3067,
29.0652

■ 30.3006, 26.0204,
21.7408

■ 38.2021, 37.4983,
37.7083

■ 27.2661, 21.5929,
15.6685

■ 43.1270, 44.6304,
47.7284

■ 24.8000, 17.9802,
10.7788

■ 48.7369, 52.7412,
59.1827

■ 22.8670, 15.1327,
6.9946

■ 55.0565, 61.8659,
72.1244

■ 21.4276, 12.9952,
4.2298

■ 62.1097, 72.0379,
86.6044

■ 20.4371, 11.5052,
2.3854

■ 69.9187, 83.2888,
102.6706

■ 19.8422, 10.5895,
1.3428

■ 73.3386, 88.8074,
107.8839

■ 19.6211, 10.2524,
0.9448

Harmonies

Analogous

The Analogous color harmony consists of three colors that are next to each other on the color wheel.



34.3607, 31.3067, 35.2419



33.9351, 31.3067, 29.0652



32.3669, 31.3067, 24.7849

Triad

The Triadic color harmony groups three colors that are evenly spaced from another and form a triangle on the color wheel.



33.9351, 31.3067, 29.0652



26.3004, 31.3067, 27.3235



29.3593, 31.3067, 48.2536

Complementary

The Complementary color scheme is a pair of colors which are on the opposite of each other on the color wheel.



33.9351, 31.3067, 29.0652



35.8861, 42.0412, 51.0235

Split Complementary

Split-complementary colors differ from the complementary color scheme. The scheme consists of three colors, the original color and two neighbors of the complement color.



27.2896, 31.3067, 45.4680



33.9351, 31.3067, 29.0652



25.5824, 31.3067, 32.9589

Square

The Square scheme is like the rectangle color scheme, but the four colors are evenly spaced on the color wheel.



33.9351, 31.3067, 29.0652



27.9464, 31.3067, 23.8733



25.9351, 31.3067, 39.6578



31.6422, 31.3067, 46.8652

Rectangle

The Rectangle color scheme consists of four colors that form a rectangle on the color wheel.



33.9351, 31.3067, 29.0652



30.9251, 31.3067, 23.3077



25.9351, 31.3067, 39.6578



28.6169, 31.3067, 47.7648

Sweetspot

The Sweet Spot groups the original color and five complimentary colors.



33.9359, 31.3081, 29.0658



73.9081, 75.1104, 78.6947



37.3057, 32.1834, 48.2677



16.2064, 16.4193, 17.1418



88.6918, 93.3107, 101.6153



17.8044, 18.7317, 20.3988

Same Dimension

The Same Dimension uses a secret algorithm to generate beautiful new colors.



33.9359, 31.3081, 29.0658



57.4073, 51.1719, 45.2537



37.3478, 38.1319, 30.2031



9.0373, 9.0775, 9.3827



13.7020, 7.1804, 0.6638



0.4944, 0.2759, 0.0272

Inverse Universe

The Inverse Universe completely reimagines the original color for something new.



35.8861, 42.0412, 51.0235



61.4867, 73.6307, 91.2072



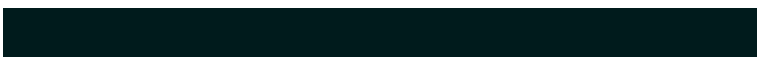
31.9452, 34.1595, 49.7098



9.2299, 10.1370, 11.5496



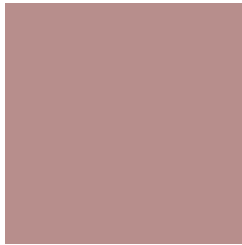
16.6003, 23.6602, 34.9450



0.5963, 0.8562, 1.2356

Previews

White Background



This preview shows how the XYZ color 33.9351, 31.3067, 29.0652 looks on a white background.

Color Contrast Check

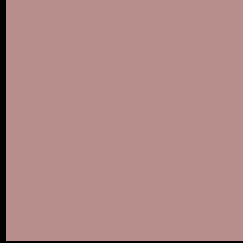
Large Text (above 18pt) WCAG AA × Fail

Any Text WCAG AA × Fail

Large Text (above 18pt) WCAG AAA × Fail

Any Text WCAG AAA × Fail

Black Background



This preview shows how the XYZ color 33.9351, 31.3067, 29.0652 looks on a black background.

Color Contrast Check

Large Text (above 18pt) WCAG AA ✓ Pass

Any Text WCAG AA ✓ Pass

Large Text (above 18pt) WCAG AAA ✓ Pass

Any Text WCAG AAA ✓ Pass

If you want to check with other color combinations, try the [Color Contrast Checker](#).

XYZ 33.9351, 31.3067, 29.0652

Background



This preview shows how black text looks on a background with the XYZ color 33.9351, 31.3067, 29.0652.



This preview shows how white text looks on a background with the XYZ color 33.9351, 31.3067,

Color Blindness Simulation

Color vision deficiency is a very complex topic, and I could not describe the different causes any better than Wikipedia does, so if you want to learn more, you should check out their [article about color blindness](#).

Dichromacy



Original Color

33.9351, 31.3067, 29.0652

Protanopia

29.8877, 31.2455, 31.2438

Deuteranopia

32.1072, 31.5022, 28.8144



Tritanopia

34.7312, 31.1809, 33.4661

Trichromacy



Original Color

33.9351, 31.3067, 29.0652

Protanomaly

31.2737, 31.2700, 30.3740

Deuteranomaly

32.6901, 31.3450, 28.7533

Tritanomaly

34.5585, 31.3467, 31.8328

Monochromacy



Original Color

33.9351, 31.3067, 29.0652

Achromatopsia

30.7148, 32.3143, 35.1903

Achromatomaly

31.8482, 31.9820, 32.9283

CSS Examples

Text

The CSS property to change the color of the text to XYZ 33.9351, 31.3067, 29.0652 is called "color". The color property can be set on classes, ids or directly on the HTML element.

This example shows how text in the color `rgb(183, 142, 140)` looks like.

```
.text, #text, p{  
    color:rgb(183, 142, 140)  
}
```

If you want to add a text shadow in that color use the text-shadow property, you can generate a text shadow directly with our [CSS Text Shadow Generator](#).

Here you see how black text with a 4 pixel rgb(183, 142, 140) colored shadow looks like.

```
.shadow{ text-shadow: 4px 4px 2px rgb(183, 142, 140) }
```

Border

The CSS property to change the border of an element to XYZ 33.9351, 31.3067, 29.0652 is called "border". The border property can be set on classes, ids or directly on the HTML element.

This example shows the color as border, it can be applied via the CSS property "border" or "border-color".

```
.border, #border, table{ border:4px solid rgb(183, 142, 140) }
```


If only the border color should be changed use the property `border-color`.

```
.border{ border-color:rgb(183, 142, 140) }
```

If you want to add a box shadow in that color use:

Here you see how a box with a 4 pixel `rgb(183, 142, 140)` colored shadow looks like.

```
.boxshadow{ -moz-box-shadow:4px 4px 4px  
4px rgb(183, 142, 140); -webkit-box-  
shadow:4px 4px 4px 4px rgb(183, 142, 140);  
box-shadow:4px 4px 4px 4px rgb(183, 142,  
140) }
```

Background

The CSS property to change the background color of an element to XYZ 33.9351, 31.3067, 29.0652 is called "background". The background property can be set on classes, ids or directly on the HTML element.

```
.background, #background, body{  
background: rgb(183, 142, 140) }
```

If only the background color should be changed can be used:

```
.background{ background-color: rgb(183,  
142, 140) }
```

This example shows the color as background, it is applied via the CSS property "background".

To optimize and compress your CSS code, you can use our [online CSS compressor and optimizer](#) based on csstidy. If you want to create a linear or radial gradient as background or border, check our [CSS Gradient Generator](#).

Hey! You found this booklet interesting? Support Converting Colors with the new Membership Option!

The pro membership hides all ads, plus gives you double the colors in the color bucket, and more awesome pro features!

[Learn more, Memberships starting at \\$2.50/m!](#)

**Follow me
on Twitter!**

@ConvertingColor