

# Converting Colors

XYZ(33.9041, 32.3061, 30.6215)

Have a look what the booklet for  
XYZ(33.9041, 32.3061, 30.6215)  
contains.

<b>XYZ(33.9820, 32.4343, 30.4560)</b> .....	3
<b><i>Conversions</i></b> .....	4
<b><i>Details</i></b> .....	6
<b><i>Harmonies</i></b> .....	12
<b><i>Previews</i></b> .....	24
<b><i>Color Blindness Simulation</i></b> .....	28
<b><i>CSS Examples</i></b> .....	31

# Color

**XYZ(33.9820, 32.4343,  
30.4560)**

# Conversions

## Conversions Part 1

<b>Format</b>	<b>Color</b>
Hex	B3938F
RGB	179, 147, 143
RGB Percent	70%, 58%, 56%
CMY	0.2980, 0.4235, 0.4392
CMYK	0.00, 0.18, 0.20, 0.30
HSL	7°, 19%, 63%
HSV	7°, 20%, 70%
XYZ	33.9820, 32.4343, 30.4560
YIQ	156.1120, 20.3560, 5.5400

# Conversions

## Conversions Part 2

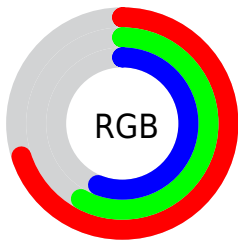
<b>Format</b>	<b>Color</b>
<b>R<sub>YB</sub></b>	179, 148, 143
Decimal	11768719
CIE Lab	63.70, 11.34, 6.62
CIE LCh	64, 13.127, 30.265
Yxy	32.4343, 0.3508, 0.3348
Android (android.graphics.Color)	4289958799 (0xFFB3938F)
YUV	156.1120, -6.4642, 20.0728
Hunter-Lab	56.9511, 6.8442, 8.1590

# Details

The XYZ color **33.9820, 32.4343, 30.4560** is a light color, and the websafe version is hex **CC9999**. A complement of this color would be **34.7939, 39.7531, 48.4872**, and the grayscale version is **31.6722, 33.3216, 36.2872**.

A 20% lighter version of the original color is **65.2256, 63.4667, 61.6359**, and **14.7628, 13.5917, 12.2013** is the 20% darker color. If you saturate the color by 10%, you get **30.4277, 27.3251, 23.1065**, and if you desaturate by 10%, it is **38.0967, 38.3173, 39.0606**.

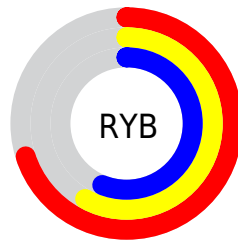
# Distribution



Red (70%)

Green (58%)

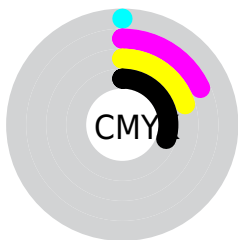
Blue (56%)



Red (70%)

Yellow (58%)

Blue (56%)

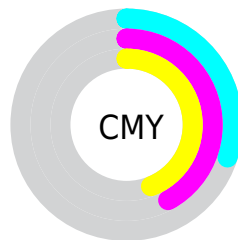


Cyan (0%)

Magenta (18%)

Yellow (20%)

Black (30%)



Cyan (30%)

Magenta (42%)


Yellow (44%)


# Brightness & Saturation Gradients

These gradients show how the XYZ color 33.9820, 32.4343, 30.4560 changes by changing the brightness by 10 percent. The first figure shows a shift by +10% for each color and the second figure -10%.


Similar to the brightness gradients but the following saturation gradients show a change of the XYZ color 33.9820, 32.4343, 30.4560 by changing the saturation by 10% instead.





 33.9820, 32.4343,  
30.4560


 33.9820, 32.4343,  
30.4560


311.6391,  
313.0929, 318.2974

 23.0426, 21.6934,  
19.9300

 65.2502, 63.4913,  
61.4521

 14.7458, 13.6318,  
12.1606

 86.3096, 84.5763,  
82.7592

 8.7263, 7.8650,  
6.7293


111.4731,  
109.8780, 108.4971

 4.6188, 4.0087,  
3.2175

141.1061,  
139.7810, 139.0844

 2.0578, 1.6784,  
1.2067

175.5738,  
174.6696, 174.9395

 0.6661, 0.4096,  
0.0000

215.2416,

 0.0000, 0.0000,

214.9282, 216.4810

0.0000

260.4749,  
260.9411, 264.1275

■ 33.9820, 32.4343,  
30.4560

■ 33.9820, 32.4343,  
30.4560

■ 30.4277, 27.3251,  
23.1065

■ 38.0967, 38.3173,  
39.0606

■ 27.4068, 22.9534,  
16.9514

■ 42.7917, 44.9998,  
48.9729

■ 24.8944, 19.2862,  
11.9281

■ 48.0895, 52.5118,  
60.2452

■ 22.8621, 16.2866,  
7.9676

■ 54.0104, 60.8804,  
72.9261

■ 21.2791, 13.9143,  
4.9931

■ 60.5738, 70.1316,  
87.0619

■ 20.1108, 12.1245,  
2.9176

■ 67.7982, 80.2900,  
102.6969

■ 19.3172, 10.8664,  
1.6388

■ 72.4005, 88.3237,  
107.8400

■ 18.8390, 10.0807,  
0.9529

# Harmonies

## Analogous

The Analogous color harmony consists of three colors that are next to each other on the color wheel.



34.4986, 32.4343, 35.2686



33.9820, 32.4343, 30.4560



32.6141, 32.4343, 27.2358

# Triad

The Triadic color harmony groups three colors that are evenly spaced from another and form a triangle on the color wheel.



33.9820, 32.4343, 30.4560



27.8598, 32.4343, 30.5296



30.8442, 32.4343, 46.4341

# Complementary

The Complementary color scheme is a pair of colors which are on the opposite of each other on the color wheel.



33.9820, 32.4343, 30.4560



34.7939, 39.7531, 48.4872

# Split Complementary

Split-complementary colors differ from the complementary color scheme. The scheme consists of three colors, the original color and two neighbors of the complement color.



29.1080, 32.4343, 44.8531



33.9820, 32.4343, 30.4560



27.4272, 32.4343, 35.3623

# Square

The Square scheme is like the rectangle color scheme, but the four colors are evenly spaced on the color wheel.



33.9820, 32.4343, 30.4560



29.0808, 32.4343, 27.2752



27.8751, 32.4343, 40.6661



32.6435, 32.4343, 44.7982



# Rectangle

The Rectangle color scheme consists of four colors that form a rectangle on the color wheel.



33.9820, 32.4343, 30.4560



31.4292, 32.4343, 26.2498



27.8751, 32.4343, 40.6661



30.2341, 32.4343, 46.2596

# Sweetspot

The Sweet Spot groups the original color and five complimentary colors.



33.9829, 32.4358, 30.4567



71.4745, 73.2489, 76.7882



36.1903, 32.3399, 45.0987



15.7178, 16.0611, 16.7648



86.6293, 91.1408, 99.2523



17.0014, 17.8868, 19.4787



# Same Dimension

The Same Dimension uses a secret algorithm to generate beautiful new colors.



33.9829, 32.4358, 30.4567



58.0080, 53.9952, 48.6250



36.9317, 38.3333, 31.4396



8.5699, 8.6524, 8.8709



13.3375, 7.1737, 0.6817



0.4441, 0.2746, 0.0296



# Inverse Universe

The Inverse Universe completely reimagines the original color for something new.



34.7939, 39.7531, 48.4872



59.7155, 69.4157, 86.6324



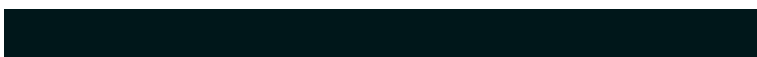
31.5895, 33.3442, 47.4191



8.6604, 9.4669, 10.8772



14.5518, 19.9040, 33.2119

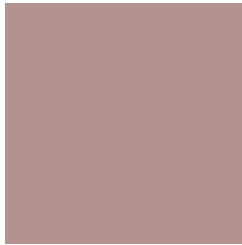


0.4807, 0.6719, 1.0526



# Previews

## White Background



This preview shows how the XYZ color 33.9820, 32.4343, 30.4560 looks on a white background.

## Color Contrast Check

Large Text (above 18pt) WCAG AA × Fail

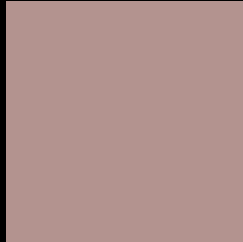
Any Text WCAG AA × Fail

Large Text (above 18pt) WCAG AAA × Fail

Any Text WCAG AAA × Fail



# Black Background



This preview shows how the XYZ color 33.9820, 32.4343, 30.4560 looks on a black background.

## Color Contrast Check

Large Text (above 18pt) WCAG AA ✓ Pass

Any Text WCAG AA ✓ Pass

Large Text (above 18pt) WCAG AAA ✓ Pass

Any Text WCAG AAA ✓ Pass

If you want to check with other color combinations, try the [Color Contrast Checker](#).

**XYZ 33.9820, 32.4343, 30.4560**

## **Background**



This preview shows how black text looks on a background with the XYZ color 33.9820, 32.4343, 30.4560.



This preview shows how white text looks on a background with the XYZ color 33.9820, 32.4343,

30.4560.

# Color Blindness Simulation

Color vision deficiency is a very complex topic, and I could not describe the different causes any better than Wikipedia does, so if you want to learn more, you should check out their [article about color blindness](#).

## Dichromacy



### Original Color

33.9820, 32.4343, 30.4560

### Protanopia

31.1201, 32.5887, 32.2538

### Deuteranopia

33.1609, 32.4767, 30.5075



## Tritanopia

35.1822, 32.4749, 35.8665

# Trichromacy



## Original Color

33.9820, 32.4343, 30.4560

## Protanomaly

31.9808, 32.3155, 31.7461

## Deuteranomaly

33.4523, 32.3931, 30.4760

## Tritanomaly

34.6872, 32.4954, 33.7222

# Monochromacy



## Original Color

33.9820, 32.4343, 30.4560

## Achromatopsia

31.5995, 33.2452, 36.2040

## Achromatomaly

32.2870, 32.9093, 33.9286

# CSS Examples

## Text

The CSS property to change the color of the text to XYZ 33.9820, 32.4343, 30.4560 is called "color". The color property can be set on classes, ids or directly on the HTML element.

This example shows how text in the color `rgb(179, 147, 143)` looks like.

```
.text, #text, p{  
    color:rgb(179, 147, 143)  
}
```

If you want to add a text shadow in that color use the text-shadow property, you can generate a text shadow directly with our [CSS Text Shadow Generator](#).

Here you see how black text with a 4 pixel rgb(179, 147, 143) colored shadow looks like.

```
.shadow{ text-shadow: 4px 4px 2px rgb(179, 147, 143) }
```

## Border

The CSS property to change the border of an element to XYZ 33.9820, 32.4343, 30.4560 is called "border". The border property can be set on classes, ids or directly on the HTML element.

This example shows the color as border, it can be applied via the CSS property "border" or "border-color".

```
.border, #border, table{ border:4px solid rgb(179, 147, 143) }
```



If only the border color should be changed use the property `border-color`.

```
.border{ border-color:rgb(179, 147, 143) }
```

If you want to add a box shadow in that color use:

Here you see how a box with a 4 pixel `rgb(179, 147, 143)` colored shadow looks like.

```
.boxshadow{ -moz-box-shadow:4px 4px 4px  
4px rgb(179, 147, 143); -webkit-box-  
shadow:4px 4px 4px 4px rgb(179, 147, 143);  
box-shadow:4px 4px 4px 4px rgb(179, 147,  
143) }
```

# Background

The CSS property to change the background color of an element to XYZ 33.9820, 32.4343, 30.4560 is called "background". The background property can be set on classes, ids or directly on the HTML element.

```
.background, #background, body{  
background: rgb(179, 147, 143) }
```

If only the background color should be changed can be used:

```
.background{ background-color: rgb(179,  
147, 143) }
```

This example shows the color as background, it is applied via the CSS property "background".

To optimize and compress your CSS code, you can use our [online CSS compressor and optimizer](#) based on csstidy. If you want to create a linear or radial gradient as background or border, check our [CSS Gradient Generator](#).

Hey! You found this booklet interesting? Support Converting Colors with the new Membership Option!

The pro membership hides all ads, plus gives you double the colors in the color bucket, and more awesome pro features!

**[Learn more, Memberships starting at \\$2.50/m!](#)**

**Follow me  
on Twitter!**

@ConvertingColor