

Converting Colors

XYZ(34.0009, 33.2622, 31.6408)

Have a look what the booklet for
XYZ(34.0009, 33.2622, 31.6408)
contains.

XYZ(34.1594, 33.4386, 31.8480)	3
<i>Conversions</i>	4
<i>Details</i>	6
<i>Harmonies</i>	12
<i>Previews</i>	24
<i>Color Blindness Simulation</i>	28
<i>CSS Examples</i>	31

Color

**XYZ(34.1594, 33.4386,
31.8480)**

Conversions

Conversions Part 1

Format	Color
Hex	B09792
RGB	176, 151, 146
RGB Percent	69%, 59%, 57%
CMY	0.3098, 0.4078, 0.4274
CMYK	0.00, 0.14, 0.17, 0.31
HSL	10°, 16%, 63%
HSV	10°, 17%, 69%
XYZ	34.1594, 33.4386, 31.8480
YIQ	157.9050, 16.5050, 3.7450

Conversions

Conversions Part 2

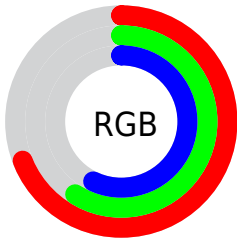
Format	Color
RYB	176, 152, 146
Decimal	11573138
CIELab	64.51, 8.44, 6.06
CIELCh	65, 10.392, 35.650
Yxy	33.4386, 0.3435, 0.3362
Android (android.graphics.Color)	4289763218 (0xFFB09792)
YUV	157.9050, -5.8692, 15.8693
Hunter-Lab	57.8261, 4.2489, 7.8240

Details

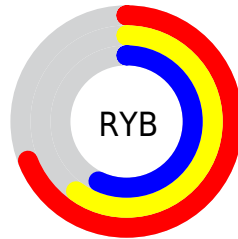
The XYZ color **34.1594, 33.4386, 31.8480** is a light color, and the websafe version is hex **999999**. A complement of this color would be **34.2532, 38.3706, 46.6756**, and the grayscale version is **32.4776, 34.1689, 37.2100**.

A 20% lighter version of the original color is **65.5354, 64.9886, 63.7335**, and **14.8369, 14.1698, 13.0194** is the 20% darker color. If you saturate the color by 10%, you get **30.6794, 28.5033, 24.4454**, and if you desaturate by 10%, it is **38.1456, 39.0484, 40.4600**.

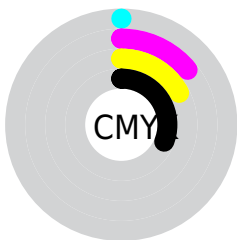
Distribution



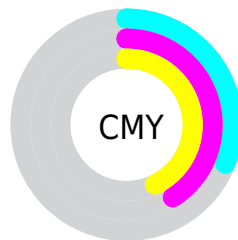
- Red (69%)
- Green (59%)
- Blue (57%)



- Red (69%)
- Yellow (60%)
- Blue (57%)



- Cyan (0%)
- Magenta (14%)
- Yellow (17%)
- Black (31%)



- Cyan (31%)
- Magenta (41%)
- Yellow (43%)

Brightness & Saturation Gradients

These gradients show how the XYZ color 34.1594, 33.4386, 31.8480 changes by changing the brightness by 10 percent. The first figure shows a shift by +10% for each color and the second figure -10%.

Similar to the brightness gradients but the following saturation gradients show a change of the XYZ color 34.1594, 33.4386, 31.8480 by changing the saturation by 10% instead.

■ 34.1594, 33.4386,
31.8480

■ 34.1594, 33.4386,
31.8480

312.4156,
317.6215, 324.8976

■ 23.1796, 22.4627,
20.9816

■ 65.5241, 65.0597,
63.6679

■ 14.8476, 14.1972,
12.9194

■ 86.6397, 86.4736,
85.4584

■ 8.7981, 8.2580,
7.2430

111.8646,
112.1357, 111.7273

■ 4.6658, 4.2605,
3.5338

141.5641,
142.4302, 142.8933

■ 2.0852, 1.8203,
1.3732

176.1036,
177.7417, 179.3747

■ 0.6812, 0.4998,
0.1207

215.8484,

■ 0.0000, 0.0000,

218.4545, 221.5902

0.0000

261.1640,
264.9529, 269.9584

■ 34.1594, 33.4386,
31.8480

■ 34.1594, 33.4386,
31.8480

■ 30.6794, 28.5033,
24.4454

■ 38.1456, 39.0484,
40.4600

■ 27.6826, 24.2128,
18.1960

■ 42.6545, 45.3521,
50.3301

■ 25.1480, 20.5415,
13.0421

■ 47.7052, 52.3741,
61.5068

■ 23.0524, 17.4606,
8.9202

■ 53.3149, 60.1361,
74.0355

■ 21.3701, 14.9391,
5.7603

■ 59.5001, 68.6588,
87.9594

■ 20.0728, 12.9428,
3.4837

■ 66.2768, 77.9623,
103.3197

■ 19.1286, 11.4339,
1.9989

■ 71.2881, 87.1170,
107.6657

■ 18.4962, 10.3677,
1.1757

■ 71.7146, 87.9702,
107.8079

■ 18.3527, 10.1263,
0.9873

Harmonies

Analogous

The Analogous color harmony consists of three colors that are next to each other on the color wheel.



34.7092, 33.4386, 35.6098



34.1594, 33.4386, 31.8480



32.9742, 33.4386, 29.4558

Triad

The Triadic color harmony groups three colors that are evenly spaced from another and form a triangle on the color wheel.



34.1594, 33.4386, 31.8480



29.2515, 33.4386, 33.1405



32.0643, 33.4386, 45.1676

Complementary

The Complementary color scheme is a pair of colors which are on the opposite of each other on the color wheel.



34.1594, 33.4386, 31.8480



34.2532, 38.3706, 46.6756

Split Complementary

Split-complementary colors differ from the complementary color scheme. The scheme consists of three colors, the original color and two neighbors of the complement color.



30.6196, 33.4386, 44.3783



34.1594, 33.4386, 31.8480



29.0249, 33.4386, 37.2200

Square

The Square scheme is like the rectangle color scheme, but the four colors are evenly spaced on the color wheel.



34.1594, 33.4386, 31.8480



30.1472, 33.4386, 30.1604



29.5183, 33.4386, 41.3858



33.4757, 33.4386, 43.4660

Rectangle

The Rectangle color scheme consists of four colors that form a rectangle on the color wheel.



34.1594, 33.4386, 31.8480



31.9994, 33.4386, 28.8489



29.5183, 33.4386, 41.3858



31.5663, 33.4386, 45.1862

Sweetspot

The Sweet Spot groups the original color and five complimentary colors.



34.1603, 33.4401, 31.8487



70.7082, 72.9579, 76.7024



35.5344, 32.7286, 42.9728



15.2070, 15.6479, 16.3686



84.5950, 89.0005, 96.9216



16.2198, 17.0645, 18.5832

Same Dimension

The Same Dimension uses a secret algorithm to generate beautiful new colors.



34.1603, 33.4401, 31.8487



59.7692, 57.5572, 53.0873



36.7294, 38.5783, 32.7051



8.6071, 8.7267, 8.8833



13.4956, 7.4898, 0.7344



0.4595, 0.3054, 0.0347

Inverse Universe

The Inverse Universe completely reimagines the original color for something new.



34.2532, 38.3706, 46.6756



59.9644, 67.9864, 84.4575



31.5794, 33.0229, 45.7843



8.6196, 9.3855, 10.8636



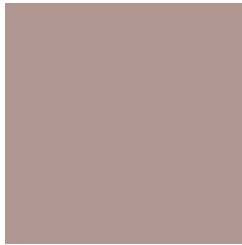
13.4018, 17.6039, 32.8285



0.4536, 0.6178, 1.0436

Previews

White Background



This preview shows how the XYZ color 34.1594, 33.4386, 31.8480 looks on a white background.

Color Contrast Check

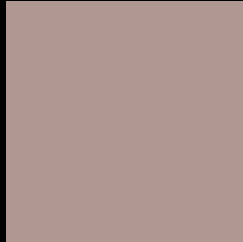
Large Text (above 18pt) WCAG AA × Fail

Any Text WCAG AA × Fail

Large Text (above 18pt) WCAG AAA × Fail

Any Text WCAG AAA × Fail

Black Background



This preview shows how the XYZ color 34.1594, 33.4386, 31.8480 looks on a black background.

Color Contrast Check

Large Text (above 18pt) WCAG AA ✓ Pass

Any Text WCAG AA ✓ Pass

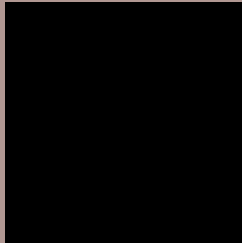
Large Text (above 18pt) WCAG AAA ✓ Pass

Any Text WCAG AAA ✓ Pass

If you want to check with other color combinations, try the [Color Contrast Checker](#).

XYZ 34.1594, 33.4386, 31.8480

Background



This preview shows how black text looks on a background with the XYZ color 34.1594, 33.4386, 31.8480.



This preview shows how white text looks on a background with the XYZ color 34.1594, 33.4386,

31.8480.

Color Blindness Simulation

Color vision deficiency is a very complex topic, and I could not describe the different causes any better than Wikipedia does, so if you want to learn more, you should check out their [article about color blindness](#).

Dichromacy



Original Color

34.1594, 33.4386, 31.8480

Protanopia

32.0112, 33.5239, 33.2174

Deuteranopia

34.1594, 33.4386, 31.8480



Tritanopia

35.4527, 33.4979, 37.8549

Trichromacy



Original Color

34.1594, 33.4386, 31.8480

Protanomaly

32.6268, 33.3563, 32.7358

Deuteranomaly

34.1594, 33.4386, 31.8480

Tritanomaly

34.9542, 33.5264, 35.6393

Monochromacy



Original Color

34.1594, 33.4386, 31.8480

Achromatopsia

32.4990, 34.1914, 37.2345

Achromatomaly

33.0711, 33.7751, 35.3481

CSS Examples

Text

The CSS property to change the color of the text to XYZ 34.1594, 33.4386, 31.8480 is called "color". The color property can be set on classes, ids or directly on the HTML element.

This example shows how text in the color `rgb(176, 151, 146)` looks like.

```
.text, #text, p{  
    color:rgb(176, 151, 146)  
}
```

If you want to add a text shadow in that color use the text-shadow property, you can generate a text shadow directly with our [CSS Text Shadow Generator](#).

Here you see how black text with a 4 pixel rgb(176, 151, 146) colored shadow looks like.

```
.shadow{ text-shadow: 4px 4px 2px rgb(176, 151, 146) }
```

Border

The CSS property to change the border of an element to XYZ 34.1594, 33.4386, 31.8480 is called "border". The border property can be set on classes, ids or directly on the HTML element.

This example shows the color as border, it can be applied via the CSS property "border" or "border-color".

```
.border, #border, table{ border:4px solid rgb(176, 151, 146) }
```


If only the border color should be changed use the property `border-color`.

```
.border{ border-color:rgb(176, 151, 146) }
```

If you want to add a box shadow in that color use:

Here you see how a box with a 4 pixel `rgb(176, 151, 146)` colored shadow looks like.

```
.boxshadow{ -moz-box-shadow:4px 4px 4px  
4px rgb(176, 151, 146); -webkit-box-  
shadow:4px 4px 4px 4px rgb(176, 151, 146);  
box-shadow:4px 4px 4px 4px rgb(176, 151,  
146) }
```

Background

The CSS property to change the background color of an element to XYZ 34.1594, 33.4386, 31.8480 is called "background". The background property can be set on classes, ids or directly on the HTML element.

```
.background, #background, body{  
background: rgb(176, 151, 146) }
```

If only the background color should be changed can be used:

```
.background{ background-color: rgb(176,  
151, 146) }
```

This example shows the color as background, it is applied via the CSS property "background".

To optimize and compress your CSS code, you can use our [online CSS compressor and optimizer](#) based on csstidy. If you want to create a linear or radial gradient as background or border, check our [CSS Gradient Generator](#).

Hey! You found this booklet interesting? Support Converting Colors with the new Membership Option!

The pro membership hides all ads, plus gives you double the colors in the color bucket, and more awesome pro features!

[Learn more, Memberships starting at \\$2.50/m!](#)

**Follow me
on Twitter!**

@ConvertingColor