

Converting Colors

XYZ(34.0329, 21.5596, 18.4326)

Have a look what the booklet for
XYZ(34.0329, 21.5596, 18.4326)
contains.

XYZ(34.0040, 21.5468, 18.2863)	3
<i>Conversions</i>	4
<i>Details</i>	6
<i>Harmonies</i>	12
<i>Previews</i>	24
<i>Color Blindness Simulation</i>	28
<i>CSS Examples</i>	31

Color

**XYZ(34.0040, 21.5468,
18.2863)**

Conversions

Conversions Part 1

Format	Color
Hex	D75172
RGB	215, 81, 114
RGB Percent	84%, 32%, 45%
CMY	0.1569, 0.6823, 0.5529
CMYK	0.00, 0.62, 0.47, 0.16
HSL	345°, 63%, 58%
HSV	345°, 62%, 84%
XYZ	34.0040, 21.5468, 18.2863
YIQ	124.8280, 69.2710, 38.6710

Conversions

Conversions Part 2

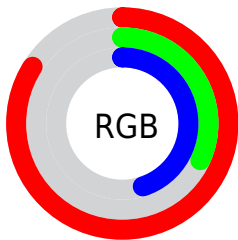
Format	Color
RYB	215, 81, 114
Decimal	14111090
CIELab	53.54, 55.20, 9.56
CIElCh	54, 56.018, 9.823
Yxy	21.5468, 0.4605, 0.2918
Android (android.graphics.Color)	4292301170 (0xFFD75172)
YUV	124.8280, -5.3382, 79.0808
Hunter-Lab	46.4185, 49.5282, 9.1360

Details

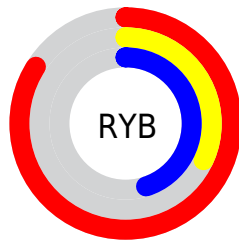
The XYZ color **34.0040, 21.5468, 18.2863** is a dark color, and the websafe version is hex **CC3366**. The color can be described as middle muted rose. A complement of this color would be **36.1386, 53.7281, 52.7257**, and the grayscale version is **19.4371, 20.4494, 22.2694**.

A 20% lighter version of the original color is **56.9271, 41.6215, 41.1098**, and **14.7014, 7.7628, 5.8778** is the 20% darker color. If you saturate the color by 10%, you get **31.8094, 18.5054, 13.3998**, and if you desaturate by 10%, it is **36.8688, 25.6672, 24.2029**.

Distribution



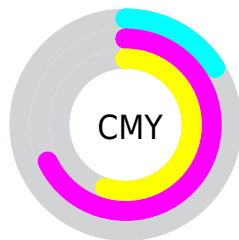
- Red (84%)
- Green (32%)
- Blue (45%)



- Red (84%)
- Yellow (32%)
- Blue (45%)



- Cyan (0%)
- Magenta (62%)
- Yellow (47%)
- Black (16%)



- Cyan (16%)
- Magenta (68%)
- Yellow (55%)

Brightness & Saturation Gradients

These gradients show how the XYZ color 34.0040, 21.5468, 18.2863 changes by changing the brightness by 10 percent. The first figure shows a shift by +10% for each color and the second figure -10%.

Similar to the brightness gradients but the following saturation gradients show a change of the XYZ color 34.0040, 21.5468, 18.2863 by changing the saturation by 10% instead.

■ 34.0040, 21.5468,
18.2863

■ 34.0040, 21.5468,
18.2863

311.7355,
260.1703, 254.7699

■ 23.0596, 13.5243,
10.9842

■ 65.2841, 45.9958,
41.3451

■ 14.7584, 7.7905,
5.9422

■ 86.3506, 63.1911,
57.9388

■ 8.7352, 3.9612,
2.7417

■ 111.5217, 84.2127,
78.4668

■ 4.6246, 1.6519,
0.9643

■ 141.1629,
109.4451, 103.3476

■ 2.0612, 0.3922,
0.0000

■ 175.6395,
139.2727, 132.9998

■ 0.6680, 0.0000,
0.0000

215.3169,

■ 0.0000, 0.0000,

174.0798, 167.8419

0.0000

260.5605,
214.2509, 208.2924

■ 34.0040, 21.5468,
18.2863

■ 34.0040, 21.5468,
18.2863

■ 31.8094, 18.5054,
13.3998

■ 36.8688, 25.6672,
24.2029

■ 30.2250, 16.4367,
9.4803

■ 40.4534, 30.9525,
31.2050

■ 29.1824, 15.2189,
6.4588

■ 44.8042, 37.4841,
39.3452

■ 28.6655, 14.7035,
4.6880

■ 49.9634, 45.3349,
48.6721

■ 55.9699, 54.5723,
59.2316

■ 62.8603, 65.2590,
71.0670

■ 70.6688, 77.4540,
84.2194

■ 79.4278, 91.2127,
98.7283

■ 81.8343, 93.1870,
108.2815

Harmonies

Analogous

The Analogous color harmony consists of three colors that are next to each other on the color wheel.



33.2575, 21.5468, 36.7288



34.0040, 21.5468, 18.2863



30.6241, 21.5468, 8.0747

Triad

The Triadic color harmony groups three colors that are evenly spaced from another and form a triangle on the color wheel.



34.0040, 21.5468, 18.2863



13.9715, 21.5468, 6.1841



16.7691, 21.5468, 69.8387

Complementary

The Complementary color scheme is a pair of colors which are on the opposite of each other on the color wheel.



34.0040, 21.5468, 18.2863



36.1386, 53.7281, 52.7257

Split Complementary

Split-complementary colors differ from the complementary color scheme. The scheme consists of three colors, the original color and two neighbors of the complement color.



12.8665, 21.5468, 51.4483



34.0040, 21.5468, 18.2863



11.4825, 21.5468, 13.8483

Square

The Square scheme is like the rectangle color scheme, but the four colors are evenly spaced on the color wheel.



34.0040, 21.5468, 18.2863



18.5826, 21.5468, 3.6871



11.1216, 21.5468, 29.5295



22.5015, 21.5468, 73.0656

Rectangle

The Rectangle color scheme consists of four colors that form a rectangle on the color wheel.



34.0040, 21.5468, 18.2863



26.8103, 21.5468, 4.9698



11.1216, 21.5468, 29.5295



15.2332, 21.5468, 64.9132

Sweetspot

The Sweet Spot groups the original color and five complimentary colors.



34.0046, 21.5480, 18.2867



76.1617, 70.7550, 76.3022



34.3827, 20.6768, 66.4687



15.7813, 14.3467, 15.4089



0.0000, 0.0000, 0.0000



20.3446, 21.4041, 23.3091

Same Dimension

The Same Dimension uses a secret algorithm to generate beautiful new colors.



34.0046, 21.5480, 18.2867



45.9198, 26.0429, 17.5997



35.5843, 27.1903, 11.1589



12.5474, 12.4705, 13.5569



17.1811, 8.8087, 2.9916



1.0695, 0.5446, 0.3555

Inverse Universe

The Inverse Universe completely reimagines the original color for something new.



34.0046, 21.5480, 18.2867



45.9198, 26.0429, 17.5997



32.2858, 39.9081, 70.2912



12.5474, 12.4705, 13.5569



17.1811, 8.8087, 2.9916



1.0695, 0.5446, 0.3555

Previews

White Background



This preview shows how the XYZ color 34.0040, 21.5468, 18.2863 looks on a white background.

Color Contrast Check

Large Text (above 18pt) WCAG AA ✓ Pass

Any Text WCAG AA × Fail

Large Text (above 18pt) WCAG AAA × Fail

Any Text WCAG AAA × Fail

Black Background



This preview shows how the XYZ color 34.0040, 21.5468, 18.2863 looks on a black background.

Color Contrast Check

Large Text (above 18pt) WCAG AA ✓ Pass

Any Text WCAG AA ✓ Pass

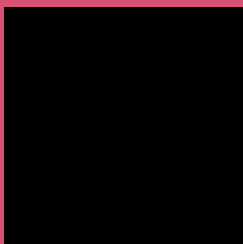
Large Text (above 18pt) WCAG AAA ✓ Pass

Any Text WCAG AAA × Fail

If you want to check with other color combinations, try the [Color Contrast Checker](#).

XYZ 34.0040, 21.5468, 18.2863

Background



This preview shows how black text looks on a background with the XYZ color 34.0040, 21.5468, 18.2863.



This preview shows how white text looks on a background with the XYZ color 34.0040, 21.5468,

Color Blindness Simulation

Color vision deficiency is a very complex topic, and I could not describe the different causes any better than Wikipedia does, so if you want to learn more, you should check out their [article about color blindness](#).

Dichromacy



Original Color

34.0040, 21.5468, 18.2863

Protanopia

21.2815, 21.8916, 27.5299

Deuteranopia

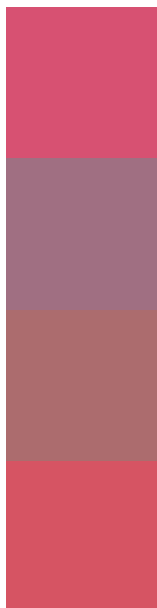
22.1272, 21.7939, 17.2278



Tritanopia

32.8684, 21.5485, 12.3244

Trichromacy



Original Color

34.0040, 21.5468, 18.2863

Protanomaly

24.2109, 20.4542, 23.7911

Deuteranomaly

25.1903, 20.6216, 17.4045

Tritanomaly

33.1540, 21.5376, 14.2142

Monochromacy



Original Color

34.0040, 21.5468, 18.2863

Achromatopsia

19.4927, 20.5079, 22.3331

Achromatomaly

23.0204, 19.5869, 20.6565

CSS Examples

Text

The CSS property to change the color of the text to XYZ 34.0040, 21.5468, 18.2863 is called "color". The color property can be set on classes, ids or directly on the HTML element.

This example shows how text in the color `rgb(215, 81, 114)` looks like.

```
.text, #text, p{  
    color:rgb(215, 81, 114)  
}
```

If you want to add a text shadow in that color use the text-shadow property, you can generate a text shadow directly with our [CSS Text Shadow Generator](#).

Here you see how black text with a 4 pixel rgb(215, 81, 114) colored shadow looks like.

```
.shadow{ text-shadow: 4px 4px 2px rgb(215, 81, 114) }
```

Border

The CSS property to change the border of an element to XYZ 34.0040, 21.5468, 18.2863 is called "border". The border property can be set on classes, ids or directly on the HTML element.

This example shows the color as border, it can be applied via the CSS property "border" or "border-color".

```
.border, #border, table{ border:4px solid rgb(215, 81, 114) }
```


If only the border color should be changed use the property `border-color`.

```
.border{ border-color:rgb(215, 81, 114) }
```

If you want to add a box shadow in that color use:

Here you see how a box with a 4 pixel `rgb(215, 81, 114)` colored shadow looks like.

```
.boxshadow{ -moz-box-shadow:4px 4px 4px  
4px rgb(215, 81, 114); -webkit-box-  
shadow:4px 4px 4px 4px rgb(215, 81, 114);  
box-shadow:4px 4px 4px 4px rgb(215, 81,  
114) }
```

Background

The CSS property to change the background color of an element to XYZ 34.0040, 21.5468, 18.2863 is called "background". The background property can be set on classes, ids or directly on the HTML element.

```
.background, #background, body{  
background: rgb(215, 81, 114) }
```

If only the background color should be changed can be used:

```
.background{ background-color: rgb(215, 81,  
114) }
```

This example shows the color as background, it is applied via the CSS property "background".

To optimize and compress your CSS code, you can use our [online CSS compressor and optimizer](#) based on csstidy. If you want to create a linear or radial gradient as background or border, check our [CSS Gradient Generator](#).

Hey! You found this booklet interesting? Support Converting Colors with the new Membership Option!

The pro membership hides all ads, plus gives you double the colors in the color bucket, and more awesome pro features!

[Learn more, Memberships starting at \\$2.50/m!](#)

**Follow me
on Twitter!**

@ConvertingColor