

Converting Colors

XYZ(34.0489, 30.7887, 30.7066)

Have a look what the booklet for
XYZ(34.0489, 30.7887, 30.7066)
contains.

XYZ(34.1793, 30.9601, 30.5600)	3
<i>Conversions</i>	4
<i>Details</i>	6
<i>Harmonies</i>	12
<i>Previews</i>	24
<i>Color Blindness Simulation</i>	28
<i>CSS Examples</i>	31

Color

**XYZ(34.1793, 30.9601,
30.5600)**

Conversions

Conversions Part 1

Format	Color
Hex	B88C90
RGB	184, 140, 144
RGB Percent	72%, 55%, 56%
CMY	0.2784, 0.4510, 0.4353
CMYK	0.00, 0.24, 0.22, 0.28
HSL	355°, 24%, 64%
HSV	355°, 24%, 72%
XYZ	34.1793, 30.9601, 30.5600
YIQ	153.6120, 24.9400, 10.5720

Conversions

Conversions Part 2

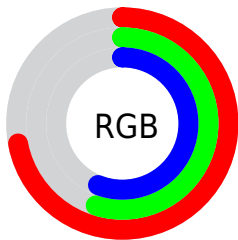
Format	Color
RYB	184, 140, 144
Decimal	12094608
CIELab	62.47, 17.31, 4.35
CIELCh	62, 17.848, 14.117
Yxy	30.9601, 0.3572, 0.3235
Android (android.graphics.Color)	4290284688 (0xFFB88C90)
YUV	153.6120, -4.7387, 26.6503
Hunter-Lab	55.6418, 12.2747, 6.3856

Details

The XYZ color **34.1793, 30.9601, 30.5600** is a light color, and the websafe version is hex **CC9999**. A complement of this color would be **36.1952, 43.1525, 49.6037**, and the grayscale version is **30.5583, 32.1497, 35.0111**.

A 20% lighter version of the original color is **65.7605, 61.3616, 61.8041**, and **14.8825, 12.8663, 12.2887** is the 20% darker color. If you saturate the color by 10%, you get **30.5269, 25.5519, 23.4949**, and if you desaturate by 10%, it is **38.4725, 37.3460, 38.7741**.

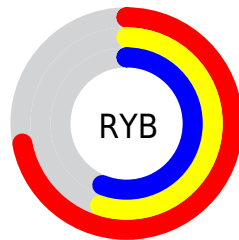
Distribution



Red (72%)

Green (55%)

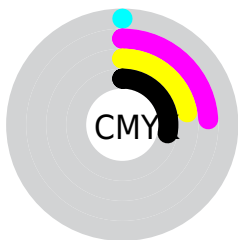
Blue (56%)



Red (72%)

Yellow (55%)

Blue (56%)

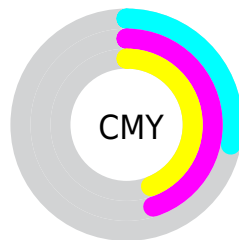


Cyan (0%)

Magenta (24%)

Yellow (22%)

Black (28%)



Cyan (28%)


Magenta (45%)


Yellow (44%)

Brightness & Saturation Gradients


These gradients show how the XYZ color 34.1793, 30.9601, 30.5600 changes by changing the brightness by 10 percent. The first figure shows a shift by +10% for each color and the second figure -10%.


Similar to the brightness gradients but the following saturation gradients show a change of the XYZ color 34.1793, 30.9601, 30.5600 by changing the saturation by 10% instead.


 34.1793, 30.9601,
30.5600


 34.1793, 30.9601,
30.5600


312.5027,
306.3545, 318.7943


 23.1949, 20.5685,
20.0084


 65.5548, 61.1772,
61.6181

 14.8590, 12.8089,
12.2170


 86.6767, 81.7716,
82.9617

 8.8061, 7.2971,
6.7673


 111.9084,
106.5355, 108.7396

 4.6711, 3.6486,
3.2408

141.6154,
135.8536, 139.3705

 2.0883, 1.4790,
1.2189

176.1630,
170.1101, 175.2729

 0.6829, 0.2739,
0.0000

215.9164,

 0.0000, 0.0000,

209.6895, 216.8653

0.0000

261.2412,
254.9762, 264.5662

■ 34.1793, 30.9601,
30.5600

■ 34.1793, 30.9601,
30.5600

■ 30.5269, 25.5519,
23.4949

■ 38.4725, 37.3460,
38.7741

■ 27.4821, 21.0693,
17.5259

■ 43.4324, 44.7502,
48.1833

■ 25.0125, 17.4615,
12.5983

■ 49.0869, 53.2158,
58.8335

■ 23.0818, 14.6713,
8.6525

■ 55.4612, 62.7826,
70.7676

■ 21.6495, 12.6347,
5.6224

■ 62.5795, 73.4880,
84.0263

■ 20.6693, 11.2781,
3.4340

■ 70.4646, 85.3678,
98.6487

■ 20.0860, 10.5131,
2.0015

■ 73.5773, 88.9304,
107.8951

■ 19.8663, 10.2300,
1.4462

Harmonies

Analogous

The Analogous color harmony consists of three colors that are next to each other on the color wheel.



34.1383, 30.9601, 37.4947



34.1793, 30.9601, 30.5600



32.8992, 30.9601, 25.2501

Triad

The Triadic color harmony groups three colors that are evenly spaced from another and form a triangle on the color wheel.



34.1793, 30.9601, 30.5600



26.3016, 30.9601, 25.0111



28.1701, 30.9601, 48.2387

Complementary

The Complementary color scheme is a pair of colors which are on the opposite of each other on the color wheel.



34.1793, 30.9601, 30.5600



36.1952, 43.1525, 49.6037

Split Complementary

Split-complementary colors differ from the complementary color scheme. The scheme consists of three colors, the original color and two neighbors of the complement color.



26.2075, 30.9601, 43.8761



34.1793, 30.9601, 30.5600



25.1698, 30.9601, 30.1895

Square

The Square scheme is like the rectangle color scheme, but the four colors are evenly spaced on the color wheel.



34.1793, 30.9601, 30.5600



28.3051, 30.9601, 22.3570



25.1363, 30.9601, 37.0700



30.5775, 30.9601, 48.3739

Rectangle

The Rectangle color scheme consists of four colors that form a rectangle on the color wheel.



34.1793, 30.9601, 30.5600



31.5073, 30.9601, 23.0759



25.1363, 30.9601, 37.0700



27.4397, 30.9601, 47.1937

Sweetspot

The Sweet Spot groups the original color and five complimentary colors.



34.1802, 30.9615, 30.5606



75.7150, 76.6120, 81.6350



36.7601, 31.8736, 49.5625



16.2058, 16.3415, 17.3774



88.6918, 93.3107, 101.6153



17.8044, 18.7317, 20.3988

Same Dimension

The Same Dimension uses a secret algorithm to generate beautiful new colors.



34.1802, 30.9615, 30.5606



58.1294, 50.4469, 48.0084



36.6605, 36.4025, 29.9068



9.0369, 9.0251, 9.5415



13.7035, 7.0552, 1.0596



0.4942, 0.2532, 0.0960

Inverse Universe

The Inverse Universe completely reimagines the original color for something new.



34.1802, 30.9615, 30.5606



58.1294, 50.4469, 48.0084



33.1772, 36.4554, 50.6357



9.0369, 9.0251, 9.5415



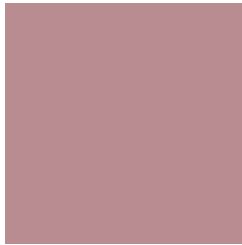
13.7035, 7.0552, 1.0596



0.4942, 0.2532, 0.0960

Previews

White Background



This preview shows how the XYZ color 34.1793, 30.9601, 30.5600 looks on a white background.

Color Contrast Check

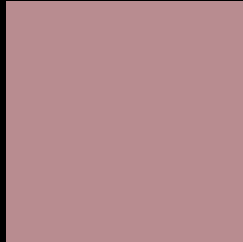
Large Text (above 18pt) WCAG AA × Fail

Any Text WCAG AA × Fail

Large Text (above 18pt) WCAG AAA × Fail

Any Text WCAG AAA × Fail

Black Background



This preview shows how the XYZ color 34.1793, 30.9601, 30.5600 looks on a black background.

Color Contrast Check

Large Text (above 18pt) WCAG AA ✓ Pass

Any Text WCAG AA ✓ Pass

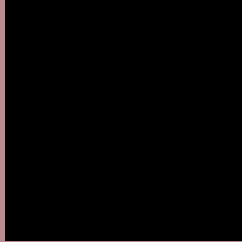
Large Text (above 18pt) WCAG AAA ✓ Pass

Any Text WCAG AAA ✓ Pass

If you want to check with other color combinations, try the [Color Contrast Checker](#).

XYZ 34.1793, 30.9601, 30.5600

Background



This preview shows how black text looks on a background with the XYZ color 34.1793, 30.9601, 30.5600.



This preview shows how white text looks on a background with the XYZ color 34.1793, 30.9601,

30.5600.

Color Blindness Simulation

Color vision deficiency is a very complex topic, and I could not describe the different causes any better than Wikipedia does, so if you want to learn more, you should check out their [article about color blindness](#).

Dichromacy



Original Color

34.1793, 30.9601, 30.5600

Protanopia

29.8981, 31.2053, 33.3016

Deuteranopia

31.5990, 30.9760, 30.3001



Tritanopia

34.7452, 30.9815, 33.0029

Trichromacy



Original Color

34.1793, 30.9601, 30.5600

Protanomaly

31.2961, 31.0049, 32.3520

Deuteranomaly

32.3867, 30.9284, 30.2494

Tritanomaly

34.5855, 30.9176, 32.1618

Monochromacy



Original Color

34.1793, 30.9601, 30.5600

Achromatopsia

30.7148, 32.3143, 35.1903

Achromatomaly

31.7695, 31.6962, 33.2977

CSS Examples

Text

The CSS property to change the color of the text to XYZ 34.1793, 30.9601, 30.5600 is called "color". The color property can be set on classes, ids or directly on the HTML element.

This example shows how text in the color `rgb(184, 140, 144)` looks like.

```
.text, #text, p{  
    color:rgb(184, 140, 144)  
}
```

If you want to add a text shadow in that color use the text-shadow property, you can generate a text shadow directly with our [CSS Text Shadow Generator](#).

Here you see how black text with a 4 pixel rgb(184, 140, 144) colored shadow looks like.

```
.shadow{ text-shadow: 4px 4px 2px rgb(184, 140, 144) }
```

Border

The CSS property to change the border of an element to XYZ 34.1793, 30.9601, 30.5600 is called "border". The border property can be set on classes, ids or directly on the HTML element.

This example shows the color as border, it can be applied via the CSS property "border" or "border-color".

```
.border, #border, table{ border:4px solid rgb(184, 140, 144) }
```


If only the border color should be changed use the property `border-color`.

```
.border{ border-color:rgb(184, 140, 144) }
```

If you want to add a box shadow in that color use:

Here you see how a box with a 4 pixel `rgb(184, 140, 144)` colored shadow looks like.

```
.boxshadow{ -moz-box-shadow:4px 4px 4px  
4px rgb(184, 140, 144); -webkit-box-  
shadow:4px 4px 4px 4px rgb(184, 140, 144);  
box-shadow:4px 4px 4px 4px rgb(184, 140,  
144) }
```

Background

The CSS property to change the background color of an element to XYZ 34.1793, 30.9601, 30.5600 is called "background". The background property can be set on classes, ids or directly on the HTML element.

```
.background, #background, body{  
background: rgb(184, 140, 144) }
```

If only the background color should be changed can be used:

```
.background{ background-color: rgb(184,  
140, 144) }
```

This example shows the color as background, it is applied via the CSS property "background".

To optimize and compress your CSS code, you can use our [online CSS compressor and optimizer](#) based on csstidy. If you want to create a linear or radial gradient as background or border, check our [CSS Gradient Generator](#).

Hey! You found this booklet interesting? Support Converting Colors with the new Membership Option!

The pro membership hides all ads, plus gives you double the colors in the color bucket, and more awesome pro features!

[Learn more, Memberships starting at \\$2.50/m!](#)

**Follow me
on Twitter!**

@ConvertingColor