

Converting Colors

XYZ(34.0640, 31.7495, 30.2950)

Have a look what the booklet for
XYZ(34.0640, 31.7495, 30.2950)
contains.

XYZ(33.9872, 31.7534, 30.3243)	3
<i>Conversions</i>	4
<i>Details</i>	6
<i>Harmonies</i>	12
<i>Previews</i>	24
<i>Color Blindness Simulation</i>	28
<i>CSS Examples</i>	31

Color

**XYZ(33.9872, 31.7534,
30.3243)**

Conversions

Conversions Part 1

Format	Color
Hex	B5908F
RGB	181, 144, 143
RGB Percent	71%, 56%, 56%
CMY	0.2902, 0.4353, 0.4392
CMYK	0.00, 0.20, 0.21, 0.29
HSL	2°, 20%, 64%
HSV	2°, 21%, 71%
XYZ	33.9872, 31.7534, 30.3243
YIQ	154.9490, 22.3730, 7.5330

Conversions

Conversions Part 2

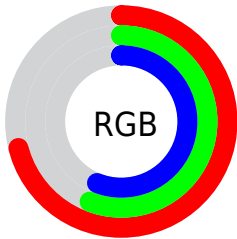
Format	Color
R_{YB}	181, 144, 143
Decimal	11899023
CIE _{Lab}	63.14, 13.78, 5.84
CIE _{LCh}	63, 14.962, 22.960
Yxy	31.7534, 0.3538, 0.3305
Android (android.graphics.Color)	4290089103 (0xFFB5908F)
YUV	154.9490, -5.8909, 22.8467
Hunter-Lab	56.3502, 9.0482, 7.5388

Details

The XYZ color **33.9872, 31.7534, 30.3243** is a light color, and the websafe version is hex **CC9999**. A complement of this color would be **35.9891, 41.8173, 49.8910**, and the grayscale version is **31.1521, 32.7745, 35.6914**.

A 20% lighter version of the original color is **65.1972, 62.4239, 61.4361**, and **14.6425, 13.1310, 12.1187** is the 20% darker color. If you saturate the color by 10%, you get **30.2613, 26.3216, 22.8545**, and if you desaturate by 10%, it is **38.3527, 38.1098, 39.0995**.

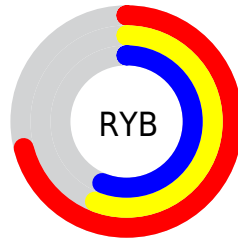
Distribution



Red (71%)

Green (56%)

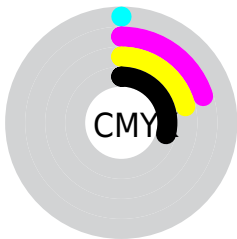
Blue (56%)



Red (71%)

Yellow (56%)

Blue (56%)

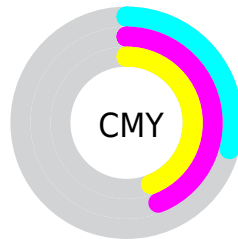


Cyan (0%)

Magenta (20%)

Yellow (21%)

Black (29%)



Cyan (29%)

Magenta (44%)

Yellow (44%)

Brightness & Saturation Gradients

These gradients show how the XYZ color 33.9872, 31.7534, 30.3243 changes by changing the brightness by 10 percent. The first figure shows a shift by +10% for each color and the second figure -10%.

Similar to the brightness gradients but the following saturation gradients show a change of the XYZ color 33.9872, 31.7534, 30.3243 by changing the saturation by 10% instead.

■ 33.9872, 31.7534,
30.3243

■ 33.9872, 31.7534,
30.3243

311.6619,
309.9944, 317.6674

■ 23.0466, 21.1732,
19.8307

■ 65.2582, 62.4243,
61.2417

■ 14.7488, 13.2507,
12.0892

■ 86.3193, 83.2838,
82.5027

■ 8.7285, 7.6014,
6.6812

111.4846,
108.3385, 108.1898

■ 4.6202, 3.8410,
3.1881

141.1195,
137.9729, 138.7217

■ 2.0586, 1.5850,
1.1915

175.5893,
172.5712, 174.5168

■ 0.6666, 0.3475,
0.0000

215.2594,

■ 0.0000, 0.0000,

212.5180, 215.9938

0.0000

260.4952,
258.1976, 263.5712

■ 33.9872, 31.7534,
30.3243

■ 33.9872, 31.7534,
30.3243

■ 30.2613, 26.3216,
22.8545

■ 38.3527, 38.1098,
39.0995

■ 27.1426, 21.7673,
16.6260

■ 43.3832, 45.4266,
49.2362

■ 24.5997, 18.0458,
11.5721

■ 49.1057, 53.7427,
60.7897

■ 22.5973, 15.1068,
7.6192

■ 55.5450, 63.0938,
73.8114

■ 21.0963, 12.8943,
4.6852

■ 62.7248, 73.5137,
88.3504

■ 20.0525, 11.3453,
2.6768

■ 70.6677, 85.0348,
104.4533

■ 19.4137, 10.3857,
1.4835

■ 72.8661, 88.5638,
107.8618

■ 19.1080, 9.9275,
0.9091

Harmonies

Analogous

The Analogous color harmony consists of three colors that are next to each other on the color wheel.



34.2963, 31.7534, 35.9869



33.9872, 31.7534, 30.3243



32.6367, 31.7534, 26.2666

Triad

The Triadic color harmony groups three colors that are evenly spaced from another and form a triangle on the color wheel.



33.9872, 31.7534, 30.3243



27.1203, 31.7534, 28.1652



29.6965, 31.7534, 47.1354

Complementary

The Complementary color scheme is a pair of colors which are on the opposite of each other on the color wheel.



33.9872, 31.7534, 30.3243



35.9891, 41.8173, 49.8910

Split Complementary

Split-complementary colors differ from the complementary color scheme. The scheme consists of three colors, the original color and two neighbors of the complement color.



27.8510, 31.7534, 44.4708



33.9872, 31.7534, 30.3243



26.4082, 31.7534, 33.1986

Square

The Square scheme is like the rectangle color scheme, but the four colors are evenly spaced on the color wheel.



33.9872, 31.7534, 30.3243



28.6578, 31.7534, 25.1230



26.6695, 31.7534, 39.2034



31.7565, 31.7534, 46.1401

Rectangle

The Rectangle color scheme consists of four colors that form a rectangle on the color wheel.



33.9872, 31.7534, 30.3243



31.3595, 31.7534, 24.7997



26.6695, 31.7534, 39.2034



29.0317, 31.7534, 46.6288

Sweetspot

The Sweet Spot groups the original color and five complimentary colors.



33.9881, 31.7549, 30.3250



72.9457, 74.4471, 78.5996



37.1544, 32.7793, 47.7451



15.6429, 15.9114, 16.7399



86.6293, 91.1408, 99.2523



17.0014, 17.8868, 19.4787

Same Dimension

The Same Dimension uses a secret algorithm to generate beautiful new colors.



33.9881, 31.7549, 30.3250



57.7814, 52.3684, 48.1111



37.0464, 37.8716, 31.3444



8.5138, 8.5400, 8.8522



13.1807, 6.8600, 0.6294



0.4206, 0.2277, 0.0218

Inverse Universe

The Inverse Universe completely reimagines the original color for something new.



35.9891, 41.8173, 49.8910



61.9843, 73.5063, 89.2158



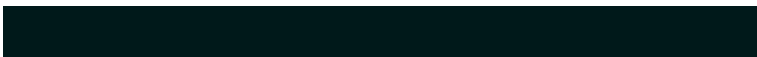
32.4776, 34.7943, 48.7205



8.7230, 9.5923, 10.8981



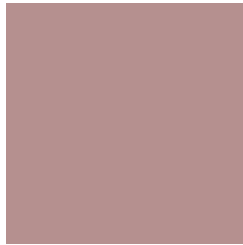
16.4909, 23.7822, 33.8583



0.5248, 0.7602, 1.0673

Previews

White Background



This preview shows how the XYZ color 33.9872, 31.7534, 30.3243 looks on a white background.

Color Contrast Check

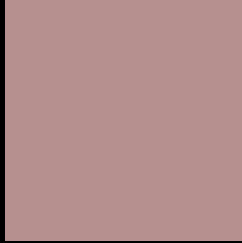
Large Text (above 18pt) WCAG AA × Fail

Any Text WCAG AA × Fail

Large Text (above 18pt) WCAG AAA × Fail

Any Text WCAG AAA × Fail

Black Background



This preview shows how the XYZ color 33.9872, 31.7534, 30.3243 looks on a black background.

Color Contrast Check

Large Text (above 18pt) WCAG AA ✓ Pass

Any Text WCAG AA ✓ Pass

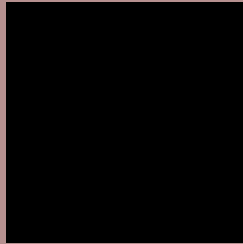
Large Text (above 18pt) WCAG AAA ✓ Pass

Any Text WCAG AAA ✓ Pass

If you want to check with other color combinations, try the [Color Contrast Checker](#).

XYZ 33.9872, 31.7534, 30.3243

Background



This preview shows how black text looks on a background with the XYZ color 33.9872, 31.7534, 30.3243.



This preview shows how white text looks on a background with the XYZ color 33.9872, 31.7534,

Color Blindness Simulation

Color vision deficiency is a very complex topic, and I could not describe the different causes any better than Wikipedia does, so if you want to learn more, you should check out their [article about color blindness](#).

Dichromacy



Original Color

33.9872, 31.7534, 30.3243

Protanopia

30.4782, 31.7627, 32.5414

Deuteranopia

32.4856, 31.9035, 30.0370



Tritanopia

34.7142, 31.5910, 34.4050

Trichromacy



Original Color

33.9872, 31.7534, 30.3243

Protanomaly

31.6616, 31.6772, 31.6397

Deuteranomaly

32.9954, 31.9344, 30.0161

Tritanomaly

34.5387, 31.7599, 32.7437

Monochromacy



Original Color

33.9872, 31.7534, 30.3243

Achromatopsia

31.1553, 32.7778, 35.6950

Achromatomaly

31.9624, 32.2601, 33.8204

CSS Examples

Text

The CSS property to change the color of the text to XYZ 33.9872, 31.7534, 30.3243 is called "color". The color property can be set on classes, ids or directly on the HTML element.

This example shows how text in the color `rgb(181, 144, 143)` looks like.

```
.text, #text, p{  
    color:rgb(181, 144, 143)  
}
```

If you want to add a text shadow in that color use the text-shadow property, you can generate a text shadow directly with our [CSS Text Shadow Generator](#).

Here you see how black text with a 4 pixel rgb(181, 144, 143) colored shadow looks like.

```
.shadow{ text-shadow: 4px 4px 2px rgb(181, 144, 143) }
```

Border

The CSS property to change the border of an element to XYZ 33.9872, 31.7534, 30.3243 is called "border". The border property can be set on classes, ids or directly on the HTML element.

This example shows the color as border, it can be applied via the CSS property "border" or "border-color".

```
.border, #border, table{ border:4px solid rgb(181, 144, 143) }
```


If only the border color should be changed use the property `border-color`.

```
.border{ border-color:rgb(181, 144, 143) }
```

If you want to add a box shadow in that color use:

Here you see how a box with a 4 pixel `rgb(181, 144, 143)` colored shadow looks like.

```
.boxshadow{ -moz-box-shadow:4px 4px 4px  
4px rgb(181, 144, 143); -webkit-box-  
shadow:4px 4px 4px 4px rgb(181, 144, 143);  
box-shadow:4px 4px 4px 4px rgb(181, 144,  
143) }
```

Background

The CSS property to change the background color of an element to XYZ 33.9872, 31.7534, 30.3243 is called "background". The background property can be set on classes, ids or directly on the HTML element.

```
.background, #background, body{  
background: rgb(181, 144, 143) }
```

If only the background color should be changed can be used:

```
.background{ background-color: rgb(181,  
144, 143) }
```

This example shows the color as background, it is applied via the CSS property "background".

To optimize and compress your CSS code, you can use our [online CSS compressor and optimizer](#) based on csstidy. If you want to create a linear or radial gradient as background or border, check our [CSS Gradient Generator](#).

Hey! You found this booklet interesting? Support Converting Colors with the new Membership Option!

The pro membership hides all ads, plus gives you double the colors in the color bucket, and more awesome pro features!

[Learn more, Memberships starting at \\$2.50/m!](#)

**Follow me
on Twitter!**

@ConvertingColor