

Converting Colors

XYZ(34.1271, 32.3512, 33.0581)

Have a look what the booklet for
XYZ(34.1271, 32.3512, 33.0581)
contains.

XYZ(34.2186, 32.5023, 32.9038)	3
<i>Conversions</i>	4
<i>Details</i>	6
<i>Harmonies</i>	12
<i>Previews</i>	24
<i>Color Blindness Simulation</i>	28
<i>CSS Examples</i>	31

Color

**XYZ(34.2186, 32.5023,
32.9038)**

Conversions

Conversions Part 1

Format	Color
Hex	B29395
RGB	178, 147, 149
RGB Percent	70%, 58%, 58%
CMY	0.3020, 0.4235, 0.4157
CMYK	0.00, 0.17, 0.16, 0.30
HSL	356°, 17%, 64%
HSV	356°, 17%, 70%
XYZ	34.2186, 32.5023, 32.9038
YIQ	156.4970, 17.8340, 7.1940

Conversions

Conversions Part 2

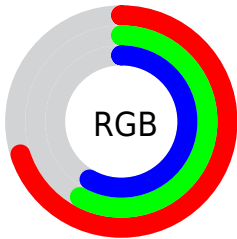
Format	Color
R _Y B	178, 147, 149
Decimal	11703189
CIE Lab	63.76, 11.92, 3.30
CIE LCh	64, 12.368, 15.466
Yxy	32.5023, 0.3435, 0.3262
Android (android.graphics.Color)	4289893269 (0xFFB29395)
YUV	156.4970, -3.6960, 18.8581
Hunter-Lab	57.0108, 7.3691, 5.6883

Details

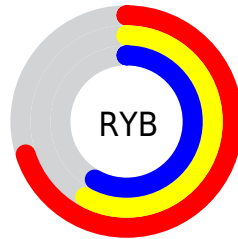
The XYZ color **34.2186, 32.5023, 32.9038** is a light color, and the websafe version is hex **CC9999**. A complement of this color would be **35.7907, 41.1792, 47.1383**, and the grayscale version is **31.8332, 33.4910, 36.4717**.

A 20% lighter version of the original color is **65.5978, 63.5775, 65.3142**, and **14.8449, 13.6076, 13.3994** is the 20% darker color. If you saturate the color by 10%, you get **30.4261, 26.8949, 25.5423**, and if you desaturate by 10%, it is **38.6314, 39.0453, 41.4108**.

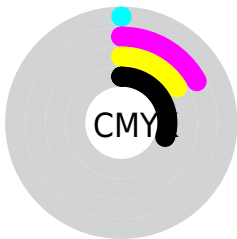
Distribution



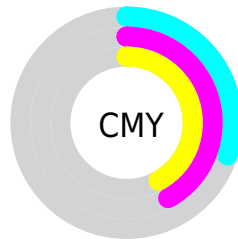
- Red (70%)
- Green (58%)
- Blue (58%)



- Red (70%)
- Yellow (58%)
- Blue (58%)



- Cyan (0%)
- Magenta (17%)
- Yellow (16%)
- Black (30%)



- Cyan (30%)
- Magenta (42%)
- Yellow (42%)

Brightness & Saturation Gradients

These gradients show how the XYZ color 34.2186, 32.5023, 32.9038 changes by changing the brightness by 10 percent. The first figure shows a shift by +10% for each color and the second figure -10%.

Similar to the brightness gradients but the following saturation gradients show a change of the XYZ color 34.2186, 32.5023, 32.9038 by changing the saturation by 10% instead.

■ 34.2186, 32.5023,
32.9038

■ 34.2186, 32.5023,
32.9038

312.6745,
313.4011, 329.8347

■ 23.2253, 21.7455,
21.7822

■ 65.6155, 63.5977,
65.3396

■ 14.8815, 13.6700,
13.5002

■ 86.7498, 84.7051,
87.4909

■ 8.8221, 7.8915,
7.6391

111.9951,
110.0314, 114.1559

■ 4.6815, 4.0256,
3.7805

141.7168,
139.9610, 145.7531

■ 2.0944, 1.6879,
1.5057

176.2802,
174.8784, 182.7010

■ 0.6862, 0.4158,
0.2222

216.0507,

■ 0.0000, 0.0000,

215.1680, 225.4182

0.0000

261.3937,
261.2141, 274.3233

■ 34.2186, 32.5023,
32.9038

■ 34.2186, 32.5023,
32.9038

■ 30.4261, 26.8949,
25.5423

■ 38.6314, 39.0453,
41.4108

■ 27.2235, 22.1762,
19.2755

■ 43.6876, 46.5592,
51.1072

■ 24.5819, 18.3019,
14.0516

■ 49.4126, 55.0829,
62.0370

■ 22.4690, 15.2221,
9.8141

■ 55.8296, 64.6519,
74.2414

■ 20.8490, 12.8818,
6.5008

■ 62.9606, 75.3000,
87.7597

■ 19.6820, 11.2188,
4.0428

■ 70.8267, 87.0594,
102.6294

■ 18.9215, 10.1610,
2.3611

■ 72.1702, 88.2050,
107.8292

■ 18.5020, 9.6017,
1.3595

■ 18.4234, 9.4903,
1.1918

Harmonies

Analogous

The Analogous color harmony consists of three colors that are next to each other on the color wheel.



34.2336, 32.5023, 37.8404



34.2186, 32.5023, 32.9038



33.2903, 32.5023, 29.0099

Triad

The Triadic color harmony groups three colors that are evenly spaced from another and form a triangle on the color wheel.



34.2186, 32.5023, 32.9038



28.5762, 32.5023, 29.1061



30.0632, 32.5023, 45.4607

Complementary

The Complementary color scheme is a pair of colors which are on the opposite of each other on the color wheel.



34.2186, 32.5023, 32.9038



35.7907, 41.1792, 47.1383

Split Complementary

Split-complementary colors differ from the complementary color scheme. The scheme consists of three colors, the original color and two neighbors of the complement color.



28.6126, 32.5023, 42.6418



34.2186, 32.5023, 32.9038



27.7761, 32.5023, 33.0468

Square

The Square scheme is like the rectangle color scheme, but the four colors are evenly spaced on the color wheel.



34.2186, 32.5023, 32.9038



30.0119, 32.5023, 26.9612



27.7892, 32.5023, 37.9973



31.7901, 32.5023, 45.4133

Rectangle

The Rectangle color scheme consists of four colors that form a rectangle on the color wheel.



34.2186, 32.5023, 32.9038



32.2977, 32.5023, 27.3942



27.7892, 32.5023, 37.9973



29.5286, 32.5023, 44.8062

Sweetspot

The Sweet Spot groups the original color and five complimentary colors.



34.2195, 32.5038, 32.9045



72.0829, 73.8167, 78.9917



36.3599, 33.3056, 46.6320



15.8343, 16.1526, 17.2401



86.6293, 91.1408, 99.2523



17.0014, 17.8868, 19.4787

Same Dimension

The Same Dimension uses a secret algorithm to generate beautiful new colors.



34.2195, 32.5038, 32.9045



59.2062, 54.7278, 54.1534



36.2735, 36.8648, 32.8093



8.5178, 8.5138, 8.9593



13.1909, 6.7939, 0.8991



0.4223, 0.2167, 0.0667

Inverse Universe

The Inverse Universe completely reimagines the original color for something new.



34.2195, 32.5038, 32.9045



59.2062, 54.7278, 54.1534



33.4468, 36.1728, 47.3390



8.5178, 8.5138, 8.9593



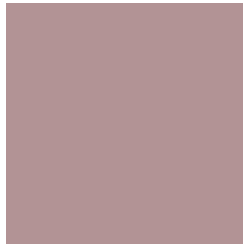
13.1909, 6.7939, 0.8991



0.4223, 0.2167, 0.0667

Previews

White Background



This preview shows how the XYZ color 34.2186, 32.5023, 32.9038 looks on a white background.

Color Contrast Check

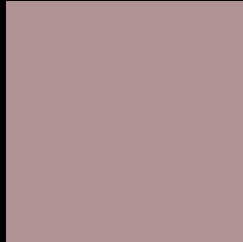
Large Text (above 18pt) WCAG AA × Fail

Any Text WCAG AA × Fail

Large Text (above 18pt) WCAG AAA × Fail

Any Text WCAG AAA × Fail

Black Background



This preview shows how the XYZ color 34.2186, 32.5023, 32.9038 looks on a black background.

Color Contrast Check

Large Text (above 18pt) WCAG AA ✓ Pass

Any Text WCAG AA ✓ Pass

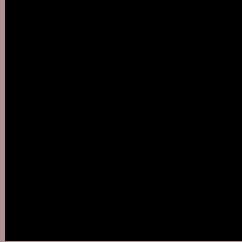
Large Text (above 18pt) WCAG AAA ✓ Pass

Any Text WCAG AAA ✓ Pass

If you want to check with other color combinations, try the [Color Contrast Checker](#).

XYZ 34.2186, 32.5023, 32.9038

Background



This preview shows how black text looks on a background with the XYZ color 34.2186, 32.5023, 32.9038.



This preview shows how white text looks on a background with the XYZ color 34.2186, 32.5023,

32.9038.

Color Blindness Simulation

Color vision deficiency is a very complex topic, and I could not describe the different causes any better than Wikipedia does, so if you want to learn more, you should check out their [article about color blindness](#).

Dichromacy



Original Color

34.2186, 32.5023, 32.9038

Protanopia

31.4059, 32.6802, 34.7896

Deuteranopia

33.1855, 32.4355, 32.9454



Tritanopia

34.9551, 32.5758, 36.3437

Trichromacy



Original Color

34.2186, 32.5023, 32.9038

Protanomaly

32.2512, 32.3995, 34.2597

Deuteranomaly

33.4703, 32.3484, 32.9136

Tritanomaly

34.7020, 32.4746, 35.0111

Monochromacy



Original Color

34.2186, 32.5023, 32.9038

Achromatopsia

31.5995, 33.2452, 36.2040

Achromatomaly

32.4508, 32.9749, 34.7914

CSS Examples

Text

The CSS property to change the color of the text to XYZ 34.2186, 32.5023, 32.9038 is called "color". The color property can be set on classes, ids or directly on the HTML element.

This example shows how text in the color `rgb(178, 147, 149)` looks like.

```
.text, #text, p{  
    color:rgb(178, 147, 149)  
}
```

If you want to add a text shadow in that color use the text-shadow property, you can generate a text shadow directly with our [CSS Text Shadow Generator](#).

Here you see how black text with a 4 pixel rgb(178, 147, 149) colored shadow looks like.

```
.shadow{ text-shadow: 4px 4px 2px rgb(178, 147, 149) }
```

Border

The CSS property to change the border of an element to XYZ 34.2186, 32.5023, 32.9038 is called "border". The border property can be set on classes, ids or directly on the HTML element.

This example shows the color as border, it can be applied via the CSS property "border" or "border-color".

```
.border, #border, table{ border:4px solid rgb(178, 147, 149) }
```


If only the border color should be changed use the property `border-color`.

```
.border{ border-color:rgb(178, 147, 149) }
```

If you want to add a box shadow in that color use:

Here you see how a box with a 4 pixel `rgb(178, 147, 149)` colored shadow looks like.

```
.boxshadow{ -moz-box-shadow:4px 4px 4px  
4px rgb(178, 147, 149); -webkit-box-  
shadow:4px 4px 4px 4px rgb(178, 147, 149);  
box-shadow:4px 4px 4px 4px rgb(178, 147,  
149) }
```

Background

The CSS property to change the background color of an element to XYZ 34.2186, 32.5023, 32.9038 is called "background". The background property can be set on classes, ids or directly on the HTML element.

```
.background, #background, body{  
background: rgb(178, 147, 149) }
```

If only the background color should be changed can be used:

```
.background{ background-color: rgb(178,  
147, 149) }
```

This example shows the color as background, it is applied via the CSS property "background".

To optimize and compress your CSS code, you can use our [online CSS compressor and optimizer](#) based on csstidy. If you want to create a linear or radial gradient as background or border, check our [CSS Gradient Generator](#).

Hey! You found this booklet interesting? Support Converting Colors with the new Membership Option!

The pro membership hides all ads, plus gives you double the colors in the color bucket, and more awesome pro features!

[Learn more, Memberships starting at \\$2.50/m!](#)

**Follow me
on Twitter!**

@ConvertingColor