

Converting Colors

XYZ(34.1367, 33.4441, 20.2789)

Have a look what the booklet for
XYZ(34.1367, 33.4441, 20.2789)
contains.

XYZ(34.1367, 33.4441, 20.2789)	3
<i>Conversions</i>	4
<i>Details</i>	6
<i>Harmonies</i>	12
<i>Previews</i>	24
<i>Color Blindness Simulation</i>	28
<i>CSS Examples</i>	31

Color

**XYZ(34.1367, 33.4441,
20.2789)**

Conversions

Conversions Part 1

Format	Color
Hex	BA9671
RGB	186, 150, 113
RGB Percent	73%, 59%, 44%
CMY	0.2706, 0.4117, 0.5569
CMYK	0.00, 0.19, 0.39, 0.27
HSL	30°, 35%, 59%
HSV	30°, 39%, 73%
XYZ	34.1367, 33.4441, 20.2789
YIQ	156.5460, 33.3330, -3.8750

Conversions

Conversions Part 2

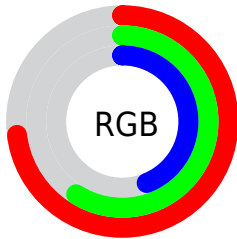
Format	Color
RYB	184, 186, 113
Decimal	12228209
CIELab	64.52, 8.35, 24.61
CIElCh	65, 25.987, 71.265
Yxy	33.4441, 0.3885, 0.3807
Android (android.graphics.Color)	4290418289 (0xFFBA9671)
YUV	156.5460, -21.4682, 25.8312
Hunter-Lab	57.8309, 4.1619, 19.6911

Details

The XYZ color **34.1367, 33.4441, 20.2789** is a light color, and the websafe version is hex **CC9966**. A complement of this color would be **26.4200, 28.5497, 50.5725**, and the grayscale version is **31.9275, 33.5902, 36.5797**.

A 20% lighter version of the original color is **65.3465, 64.9570, 44.6911**, and **14.7760, 14.1306, 6.9497** is the 20% darker color. If you saturate the color by 10%, you get **31.7885, 30.2552, 14.8487**, and if you desaturate by 10%, it is **36.8158, 36.9512, 26.8789**.

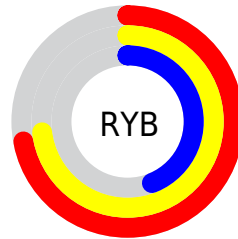
Distribution



Red (73%)

Green (59%)

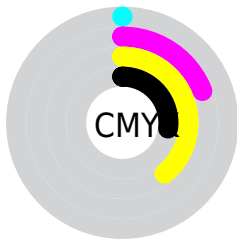
Blue (44%)



Red (72%)

Yellow (73%)

Blue (44%)

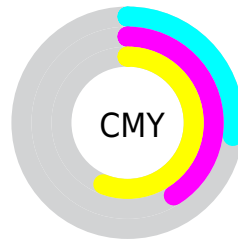


Cyan (0%)

Magenta (19%)

Yellow (39%)

Black (27%)



Cyan (27%)


Magenta (41%)


Yellow (56%)

Brightness & Saturation Gradients


These gradients show how the XYZ color 34.1367, 33.4441, 20.2789 changes by changing the brightness by 10 percent. The first figure shows a shift by +10% for each color and the second figure -10%.


Similar to the brightness gradients but the following saturation gradients show a change of the XYZ color 34.1367, 33.4441, 20.2789 by changing the saturation by 10% instead.


 34.1367, 33.4441,
20.2789


 34.1367, 33.4441,
20.2789


312.3164,
317.6461, 266.0750


 23.1620, 22.4669,
12.4119


 65.4891, 65.0683,
44.7494


 14.8345, 14.2004,
6.8989


 86.5975, 86.4840,
62.1899

 8.7889, 8.2601,
3.3215


 111.8145,
112.1480, 83.6587

 4.6598, 4.2619,
1.2610

 141.5055,
142.4447, 109.5742

 2.0817, 1.8211,
0.0295

176.0358,
177.7584, 140.3551

 0.6793, 0.5003,
0.0000

215.7708,

 0.0000, 0.0000,

218.4737, 176.4198

0.0000

261.0759,
264.9748, 218.1869

■ 34.1367, 33.4441,
20.2789

■ 34.1367, 33.4441,
20.2789

■ 31.7885, 30.2552,
14.8487

■ 36.8158, 36.9512,
26.8789

■ 29.7528, 27.3692,
10.5159

■ 39.8379, 40.7815,
34.7111

■ 28.0132, 24.7764,
7.2031

■ 43.2174, 44.9461,
43.8360

■ 26.5501, 22.4645,
4.8217

■ 46.9672, 49.4538,
54.3093

■ 25.3412, 20.4200,
3.2677

■ 51.0993, 54.3132,
66.1836

■ 24.3474, 18.6223,
2.3515

■ 55.6254, 59.5325,
79.5084

■ 24.2778, 18.4953,
2.2904

■ 60.5563, 65.1195,
94.3311

■ 64.7882, 70.6360,
104.8272

■ 67.3109, 75.6815,
105.6681

Harmonies

Analogous

The Analogous color harmony consists of three colors that are next to each other on the color wheel.



37.4627, 33.4441, 24.5241



34.1367, 33.4441, 20.2789



30.4131, 33.4441, 19.8157

Triad

The Triadic color harmony groups three colors that are evenly spaced from another and form a triangle on the color wheel.



34.1367, 33.4441, 20.2789



25.2863, 33.4441, 40.5576



36.7335, 33.4441, 54.0508

Complementary

The Complementary color scheme is a pair of colors which are on the opposite of each other on the color wheel.



34.1367, 33.4441, 20.2789



26.4200, 28.5497, 50.5725

Split Complementary

Split-complementary colors differ from the complementary color scheme. The scheme consists of three colors, the original color and two neighbors of the complement color.



33.2030, 33.4441, 60.3782



34.1367, 33.4441, 20.2789



26.7167, 33.4441, 51.6362

Square

The Square scheme is like the rectangle color scheme, but the four colors are evenly spaced on the color wheel.



34.1367, 33.4441, 20.2789



25.4936, 33.4441, 30.2336



29.5488, 33.4441, 59.4173



39.0406, 33.4441, 43.3862

Rectangle

The Rectangle color scheme consists of four colors that form a rectangle on the color wheel.



34.1367, 33.4441, 20.2789



28.2239, 33.4441, 21.5826



29.5488, 33.4441, 59.4173



35.6394, 33.4441, 56.8412

Sweetspot

The Sweet Spot groups the original color and five complimentary colors.



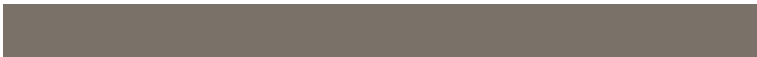
34.1375, 33.4457, 20.2796



76.4572, 79.1753, 74.3233



31.6198, 24.4356, 31.6938



16.6579, 17.2156, 15.8808



90.7827, 95.5105, 104.0109



18.6292, 19.5994, 21.3438

Same Dimension

The Same Dimension uses a secret algorithm to generate beautiful new colors.



34.1375, 33.4457, 20.2796



58.2077, 55.6537, 28.2322



40.7893, 46.7492, 22.4968



9.3708, 9.7445, 9.4939



16.4085, 12.5934, 1.5660



0.6403, 0.5676, 0.0758

Inverse Universe

The Inverse Universe completely reimagines the original color for something new.



26.4200, 28.5497, 50.5725



42.2776, 45.5490, 90.7650



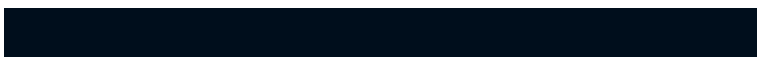
21.5784, 18.8665, 48.9586



8.8769, 9.4311, 11.4320



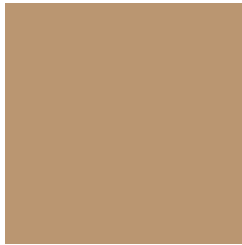
8.5957, 7.6510, 32.2768



0.3650, 0.3936, 1.1585

Previews

White Background



This preview shows how the XYZ color 34.1367, 33.4441, 20.2789 looks on a white background.

Color Contrast Check

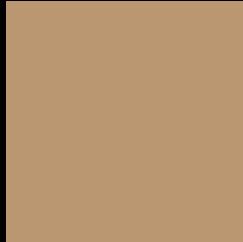
Large Text (above 18pt) WCAG AA × Fail

Any Text WCAG AA × Fail

Large Text (above 18pt) WCAG AAA × Fail

Any Text WCAG AAA × Fail

Black Background



This preview shows how the XYZ color 34.1367, 33.4441, 20.2789 looks on a black background.

Color Contrast Check

Large Text (above 18pt) WCAG AA ✓ Pass

Any Text WCAG AA ✓ Pass

Large Text (above 18pt) WCAG AAA ✓ Pass

Any Text WCAG AAA ✓ Pass

If you want to check with other color combinations, try the [Color Contrast Checker](#).

XYZ 34.1367, 33.4441, 20.2789

Background



This preview shows how black text looks on a background with the XYZ color 34.1367, 33.4441, 20.2789.



This preview shows how white text looks on a background with the XYZ color 34.1367, 33.4441,

Color Blindness Simulation

Color vision deficiency is a very complex topic, and I could not describe the different causes any better than Wikipedia does, so if you want to learn more, you should check out their [article about color blindness](#).

Dichromacy



Original Color

34.1367, 33.4441, 20.2789

Protanopia

31.1893, 33.3627, 21.3188

Deuteranopia

34.1367, 33.4441, 20.2789



Tritanopia

37.1249, 33.2602, 35.4735

Trichromacy



Original Color

34.1367, 33.4441, 20.2789

Protanomaly

32.3293, 33.4630, 20.9747

Deuteranomaly

34.1367, 33.4441, 20.2789

Tritanomaly

35.9988, 33.2700, 29.3354

Monochromacy



Original Color

34.1367, 33.4441, 20.2789

Achromatopsia

32.0474, 33.7164, 36.7171

Achromatomaly

32.5118, 33.3591, 29.9247

CSS Examples

Text

The CSS property to change the color of the text to XYZ 34.1367, 33.4441, 20.2789 is called "color". The color property can be set on classes, ids or directly on the HTML element.

This example shows how text in the color `rgb(186, 150, 113)` looks like.

```
.text, #text, p{  
    color:rgb(186, 150, 113)  
}
```

If you want to add a text shadow in that color use the text-shadow property, you can generate a text shadow directly with our [CSS Text Shadow Generator](#).

Here you see how black text with a 4 pixel rgb(186, 150, 113) colored shadow looks like.

```
.shadow{ text-shadow: 4px 4px 2px rgb(186, 150, 113) }
```

Border

The CSS property to change the border of an element to XYZ 34.1367, 33.4441, 20.2789 is called "border". The border property can be set on classes, ids or directly on the HTML element.

This example shows the color as border, it can be applied via the CSS property "border" or "border-color".

```
.border, #border, table{ border:4px solid rgb(186, 150, 113) }
```


If only the border color should be changed use the property `border-color`.

```
.border{ border-color:rgb(186, 150, 113) }
```

If you want to add a box shadow in that color use:

Here you see how a box with a 4 pixel `rgb(186, 150, 113)` colored shadow looks like.

```
.boxshadow{ -moz-box-shadow:4px 4px 4px  
4px rgb(186, 150, 113); -webkit-box-  
shadow:4px 4px 4px 4px rgb(186, 150, 113);  
box-shadow:4px 4px 4px 4px rgb(186, 150,  
113) }
```

Background

The CSS property to change the background color of an element to XYZ 34.1367, 33.4441, 20.2789 is called "background". The background property can be set on classes, ids or directly on the HTML element.

```
.background, #background, body{  
background: rgb(186, 150, 113) }
```

If only the background color should be changed can be used:

```
.background{ background-color: rgb(186,  
150, 113) }
```

This example shows the color as background, it is applied via the CSS property "background".

To optimize and compress your CSS code, you can use our [online CSS compressor and optimizer](#) based on csstidy. If you want to create a linear or radial gradient as background or border, check our [CSS Gradient Generator](#).

Hey! You found this booklet interesting? Support Converting Colors with the new Membership Option!

The pro membership hides all ads, plus gives you double the colors in the color bucket, and more awesome pro features!

[Learn more, Memberships starting at \\$2.50/m!](#)

**Follow me
on Twitter!**

@ConvertingColor