

Converting Colors

XYZ(34.1537, 31.1754, 32.0027)

Have a look what the booklet for
XYZ(34.1537, 31.1754, 32.0027)
contains.

XYZ(34.0827, 31.1014, 31.8106)	3
<i>Conversions</i>	4
<i>Details</i>	6
<i>Harmonies</i>	12
<i>Previews</i>	24
<i>Color Blindness Simulation</i>	28
<i>CSS Examples</i>	31

Color

**XYZ(34.0827, 31.1014,
31.8106)**

Conversions

Conversions Part 1

Format	Color
Hex	B68D93
RGB	182, 141, 147
RGB Percent	71%, 55%, 58%
CMY	0.2863, 0.4470, 0.4235
CMYK	0.00, 0.23, 0.19, 0.29
HSL	351°, 22%, 63%
HSV	351°, 23%, 71%
XYZ	34.0827, 31.1014, 31.8106
YIQ	153.9430, 22.5100, 10.5580

Conversions

Conversions Part 2

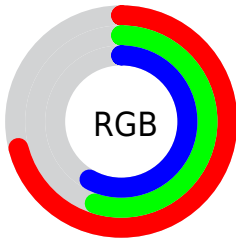
Format	Color
RYB	182, 141, 147
Decimal	11963795
CIELab	62.59, 16.46, 2.80
CIELCh	63, 16.696, 9.642
Yxy	31.1014, 0.3514, 0.3207
Android (android.graphics.Color)	4290153875 (0xFFB68D93)
YUV	153.9430, -3.4229, 24.6060
Hunter-Lab	55.7686, 11.4942, 5.2188

Details

The XYZ color **34.0827, 31.1014, 31.8106** is a light color, and the websafe version is hex **CC9999**. A complement of this color would be **35.5501, 42.2539, 47.3584**, and the grayscale version is **30.6985, 32.2972, 35.1716**.

A 20% lighter version of the original color is **65.3176, 61.4244, 63.6718**, and **14.8008, 12.9344, 13.0258** is the 20% darker color. If you saturate the color by 10%, you get **30.4784, 25.7139, 24.9946**, and if you desaturate by 10%, it is **38.2944, 37.4396, 39.6424**.

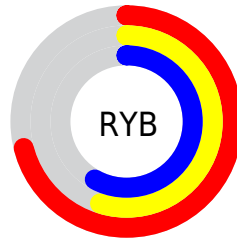
Distribution



Red (71%)

Green (55%)

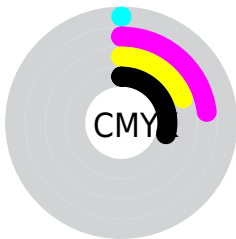
Blue (58%)



Red (71%)

Yellow (55%)

Blue (58%)

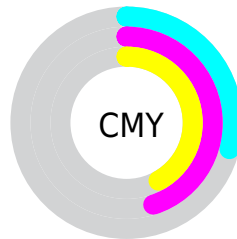


Cyan (0%)

Magenta (23%)

Yellow (19%)

Black (29%)



Cyan (29%)


Magenta (45%)


Yellow (42%)

Brightness & Saturation Gradients


These gradients show how the XYZ color 34.0827, 31.1014, 31.8106 changes by changing the brightness by 10 percent. The first figure shows a shift by +10% for each color and the second figure -10%.


Similar to the brightness gradients but the following saturation gradients show a change of the XYZ color 34.0827, 31.1014, 31.8106 by changing the saturation by 10% instead.


 34.0827, 31.1014,
31.8106


 34.0827, 31.1014,
31.8106


312.0801,
307.0052, 324.7217


 23.1203, 20.6761,
20.9533


 65.4057, 61.3997,
63.6085

 14.8036, 12.8874,
12.8989


 86.4970, 82.0414,
85.3861

 8.7671, 7.3511,
7.2291


 111.6954,
106.8574, 111.6410

 4.6454, 3.6826,
3.5252

141.3661,
136.2321, 142.7915

 2.0734, 1.4977,
1.3686

175.8746,
170.5498, 179.2563

 0.6747, 0.2871,
0.1171

215.5862,

 0.0000, 0.0000,

210.1950, 221.4539

0.0000

260.8662,
255.5520, 269.8028

■ 34.0827, 31.1014,
31.8106

■ 34.0827, 31.1014,
31.8106

■ 30.4784, 25.7139,
24.9946

■ 38.2944, 37.4396,
39.6424

■ 27.4509, 21.2271,
19.1506

■ 43.1372, 44.7669,
48.5272

■ 24.9707, 17.5931,
14.2349

■ 48.6367, 53.1246,
58.5030

■ 23.0047, 14.7576,
10.1991

■ 54.8162, 62.5504,
69.6050

■ 21.5161, 12.6603,
6.9907

■ 61.6978, 73.0803,
81.8670

■ 20.4633, 11.2319,
4.5517

■ 69.3028, 84.7485,
95.3214

■ 19.7969, 10.3901,
2.8158

■ 73.1015, 88.6851,
107.8728

■ 19.4850, 10.0225,
1.9217

Harmonies

Analogous

The Analogous color harmony consists of three colors that are next to each other on the color wheel.



33.8509, 31.1014, 38.4082



34.0827, 31.1014, 31.8106



33.0560, 31.1014, 26.4895

Triad

The Triadic color harmony groups three colors that are evenly spaced from another and form a triangle on the color wheel.



34.0827, 31.1014, 31.8106



26.8592, 31.1014, 25.1107



28.0663, 31.1014, 47.0075

Complementary

The Complementary color scheme is a pair of colors which are on the opposite of each other on the color wheel.



34.0827, 31.1014, 31.8106



35.5501, 42.2539, 47.3584

Split Complementary

Split-complementary colors differ from the complementary color scheme. The scheme consists of three colors, the original color and two neighbors of the complement color.



26.3214, 31.1014, 42.4943



34.0827, 31.1014, 31.8106



25.6497, 31.1014, 29.6934

Square

The Square scheme is like the rectangle color scheme, but the four colors are evenly spaced on the color wheel.



34.0827, 31.1014, 31.8106



28.8349, 31.1014, 22.9618



25.4579, 31.1014, 36.0042



30.2990, 31.1014, 47.7645

Rectangle

The Rectangle color scheme consists of four colors that form a rectangle on the color wheel.



34.0827, 31.1014, 31.8106



31.8254, 31.1014, 24.1707



25.4579, 31.1014, 36.0042



27.4065, 31.1014, 45.8543

Sweetspot

The Sweet Spot groups the original color and five complimentary colors.



34.0836, 31.1028, 31.8112



74.0291, 74.8322, 80.3386



35.8399, 31.6412, 48.4745



16.2352, 16.3532, 17.5323



88.6918, 93.3107, 101.6153



17.8044, 18.7317, 20.3988

Same Dimension

The Same Dimension uses a secret algorithm to generate beautiful new colors.



34.0836, 31.1028, 31.8112



58.4354, 51.3609, 51.3532



35.8797, 35.4287, 30.1484



9.0567, 9.0331, 9.6461



13.7756, 7.0840, 1.4390



0.5027, 0.2566, 0.1408

Inverse Universe

The Inverse Universe completely reimagines the original color for something new.



34.0836, 31.1028, 31.8112



58.4354, 51.3609, 51.3532



33.3672, 36.9174, 49.6233



9.0567, 9.0331, 9.6461



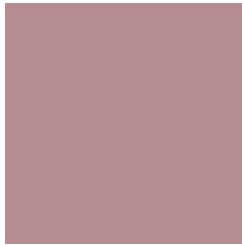
13.7756, 7.0840, 1.4390



0.5027, 0.2566, 0.1408

Previews

White Background



This preview shows how the XYZ color 34.0827, 31.1014, 31.8106 looks on a white background.

Color Contrast Check

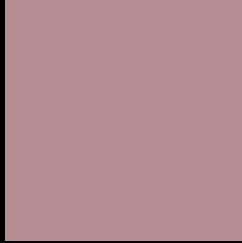
Large Text (above 18pt) WCAG AA × Fail

Any Text WCAG AA × Fail

Large Text (above 18pt) WCAG AAA × Fail

Any Text WCAG AAA × Fail

Black Background



This preview shows how the XYZ color 34.0827, 31.1014, 31.8106 looks on a black background.

Color Contrast Check

Large Text (above 18pt) WCAG AA ✓ Pass

Any Text WCAG AA ✓ Pass

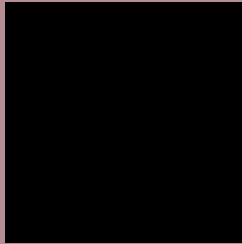
Large Text (above 18pt) WCAG AAA ✓ Pass

Any Text WCAG AAA ✓ Pass

If you want to check with other color combinations, try the [Color Contrast Checker](#).

XYZ 34.0827, 31.1014, 31.8106

Background



This preview shows how black text looks on a background with the XYZ color 34.0827, 31.1014, 31.8106.



This preview shows how white text looks on a background with the XYZ color 34.0827, 31.1014,

Color Blindness Simulation

Color vision deficiency is a very complex topic, and I could not describe the different causes any better than Wikipedia does, so if you want to learn more, you should check out their [article about color blindness](#).

Dichromacy



Original Color

34.0827, 31.1014, 31.8106

Protanopia

30.1428, 31.3031, 34.5904

Deuteranopia

31.7705, 31.2676, 31.5549



Tritanopia

34.2554, 30.9356, 33.4439

Trichromacy



Original Color

34.0827, 31.1014, 31.8106

Protanomaly

31.3295, 30.9943, 33.6094

Deuteranomaly

32.5473, 31.2104, 31.5029

Tritanomaly

34.1745, 30.9033, 33.0179

Monochromacy



Original Color

34.0827, 31.1014, 31.8106

Achromatopsia

30.7148, 32.3143, 35.1903

Achromatomaly

31.6432, 31.6218, 33.7140

CSS Examples

Text

The CSS property to change the color of the text to XYZ 34.0827, 31.1014, 31.8106 is called "color". The color property can be set on classes, ids or directly on the HTML element.

This example shows how text in the color `rgb(182, 141, 147)` looks like.

```
.text, #text, p{  
    color:rgb(182, 141, 147)  
}
```

If you want to add a text shadow in that color use the text-shadow property, you can generate a text shadow directly with our [CSS Text Shadow Generator](#).

Here you see how black text with a 4 pixel rgb(182, 141, 147) colored shadow looks like.

```
.shadow{ text-shadow: 4px 4px 2px rgb(182, 141, 147) }
```

Border

The CSS property to change the border of an element to XYZ 34.0827, 31.1014, 31.8106 is called "border". The border property can be set on classes, ids or directly on the HTML element.

This example shows the color as border, it can be applied via the CSS property "border" or "border-color".

```
.border, #border, table{ border:4px solid rgb(182, 141, 147) }
```


If only the border color should be changed use the property `border-color`.

```
.border{ border-color:rgb(182, 141, 147) }
```

If you want to add a box shadow in that color use:

Here you see how a box with a 4 pixel `rgb(182, 141, 147)` colored shadow looks like.

```
.boxshadow{ -moz-box-shadow:4px 4px 4px  
4px rgb(182, 141, 147); -webkit-box-  
shadow:4px 4px 4px 4px rgb(182, 141, 147);  
box-shadow:4px 4px 4px 4px rgb(182, 141,  
147) }
```

Background

The CSS property to change the background color of an element to XYZ 34.0827, 31.1014, 31.8106 is called "background". The background property can be set on classes, ids or directly on the HTML element.

```
.background, #background, body{  
background: rgb(182, 141, 147) }
```

If only the background color should be changed can be used:

```
.background{ background-color: rgb(182,  
141, 147) }
```

This example shows the color as background, it is applied via the CSS property "background".

To optimize and compress your CSS code, you can use our [online CSS compressor and optimizer](#) based on csstidy. If you want to create a linear or radial gradient as background or border, check our [CSS Gradient Generator](#).

Hey! You found this booklet interesting? Support Converting Colors with the new Membership Option!

The pro membership hides all ads, plus gives you double the colors in the color bucket, and more awesome pro features!

[Learn more, Memberships starting at \\$2.50/m!](#)

**Follow me
on Twitter!**

@ConvertingColor