

Converting Colors

XYZ(34.1707, 30.1705, 24.2727)

Have a look what the booklet for
XYZ(34.1707, 30.1705, 24.2727)
contains.

XYZ(34.1863, 30.2432, 24.4578)	3
<i>Conversions</i>	4
<i>Details</i>	6
<i>Harmonies</i>	12
<i>Previews</i>	24
<i>Color Blindness Simulation</i>	28
<i>CSS Examples</i>	31

Color

**XYZ(34.1863, 30.2432,
24.4578)**

Conversions

Conversions Part 1

Format	Color
Hex	BF8880
RGB	191, 136, 128
RGB Percent	75%, 53%, 50%
CMY	0.2510, 0.4666, 0.4980
CMYK	0.00, 0.29, 0.33, 0.25
HSL	8°, 33%, 63%
HSV	8°, 33%, 75%
XYZ	34.1863, 30.2432, 24.4578
YIQ	151.5330, 35.3480, 9.1720

Conversions

Conversions Part 2

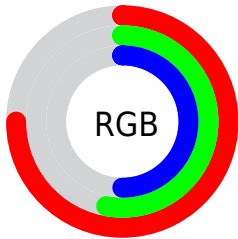
Format	Color
RYB	191, 137, 128
Decimal	12552320
CIELab	61.86, 19.96, 12.67
CIElCh	62, 23.646, 32.402
Yxy	30.2432, 0.3846, 0.3402
Android (android.graphics.Color)	4290742400 (0xFFBF8880)
YUV	151.5330, -11.6018, 34.6126
Hunter-Lab	54.9938, 14.7234, 12.1272

Details

The XYZ color **34.1863, 30.2432, 24.4578** is a light color, and the websafe version is hex **CC9999**. A complement of this color would be **35.2390, 42.2163, 55.5815**, and the grayscale version is **29.6823, 31.2281, 34.0074**.

A 20% lighter version of the original color is **65.8209, 60.3028, 51.8865**, and **14.8924, 12.4543, 9.0161** is the 20% darker color. If you saturate the color by 10%, you get **30.8772, 25.4511, 17.7252**, and if you desaturate by 10%, it is **38.0989, 35.8635, 32.5597**.

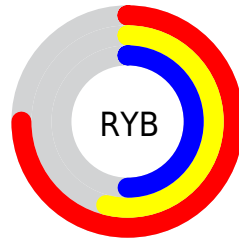
Distribution



Red (75%)

Green (53%)

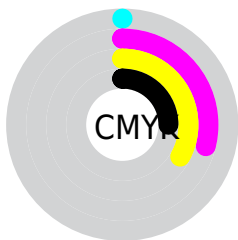
Blue (50%)



Red (75%)

Yellow (54%)

Blue (50%)

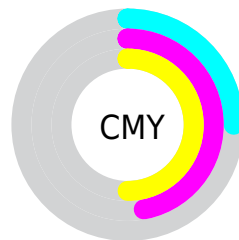


Cyan (0%)

Magenta (29%)

Yellow (33%)

Black (25%)



Cyan (25%)


Magenta (47%)


Yellow (50%)

Brightness & Saturation Gradients


These gradients show how the XYZ color 34.1863, 30.2432, 24.4578 changes by changing the brightness by 10 percent. The first figure shows a shift by +10% for each color and the second figure -10%.


Similar to the brightness gradients but the following saturation gradients show a change of the XYZ color 34.1863, 30.2432, 24.4578 by changing the saturation by 10% instead.


 34.1863, 30.2432,
24.4578


 34.1863, 30.2432,
24.4578


312.5333,
303.0364, 288.4876


 23.2003, 20.0233,
15.4582


 65.5656, 60.0466,
51.7294

 14.8630, 12.4120,
8.9914


 86.6897, 80.3988,
70.8385

 8.8090, 7.0249,
4.6389


 111.9239,
104.8972, 94.1546

 4.6729, 3.4777,
1.9820

141.6335,
133.9263, 122.0961

 2.0894, 1.3859,
0.5442

176.1838,
167.8703, 155.0816

 0.6835, 0.2063,
0.0000

215.9404,

 0.0000, 0.0000,

207.1138, 193.5297

0.0000

261.2684,
252.0410, 237.8588

■ 34.1863, 30.2432,
24.4578

■ 34.1863, 30.2432,
24.4578

■ 30.8772, 25.4511,
17.7252

■ 38.0989, 35.8635,
32.5597

■ 28.1392, 21.4438,
12.2845

■ 42.6408, 42.3439,
42.0990

■ 25.9402, 18.1806,
8.0531

■ 47.8389, 49.7203,
53.1414

■ 24.2441, 15.6154,
4.9382

■ 53.7180, 58.0249,
65.7480

■ 23.0101, 13.6967,
2.8334

■ 60.3015, 67.2885,
79.9766

■ 22.1909, 12.3661,
1.6118

■ 67.6119, 77.5404,
95.8819

■ 21.8180, 11.7407,
1.1162

■ 74.5725, 88.3695,
107.7344

■ 75.2959, 89.8164,
107.9755

Harmonies

Analogous

The Analogous color harmony consists of three colors that are next to each other on the color wheel.



35.2531, 30.2432, 32.2057



34.1863, 30.2432, 24.4578



31.6528, 30.2432, 19.7908

Triad

The Triadic color harmony groups three colors that are evenly spaced from another and form a triangle on the color wheel.



34.1863, 30.2432, 24.4578



23.6900, 30.2432, 25.5085



29.0007, 30.2432, 53.5541

Complementary

The Complementary color scheme is a pair of colors which are on the opposite of each other on the color wheel.



34.1863, 30.2432, 24.4578



35.2390, 42.2163, 55.5815

Split Complementary

Split-complementary colors differ from the complementary color scheme. The scheme consists of three colors, the original color and two neighbors of the complement color.



26.0214, 30.2432, 50.8829



34.1863, 30.2432, 24.4578



23.0921, 30.2432, 33.6644

Square

The Square scheme is like the rectangle color scheme, but the four colors are evenly spaced on the color wheel.



34.1863, 30.2432, 24.4578



25.6109, 30.2432, 20.3148



23.9145, 30.2432, 43.1618



32.1255, 30.2432, 49.9143

Rectangle

The Rectangle color scheme consists of four colors that form a rectangle on the color wheel.



34.1863, 30.2432, 24.4578



29.5561, 30.2432, 18.5179



23.9145, 30.2432, 43.1618



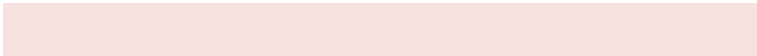
27.9494, 30.2432, 53.3642

Sweetspot

The Sweet Spot groups the original color and five complimentary colors.



34.1871, 30.2446, 24.4584



78.8792, 79.4057, 80.7097



37.8203, 29.9611, 48.9451



17.0411, 17.0387, 17.1299



92.9021, 97.7402, 106.4391



19.4759, 20.4902, 22.3138

Same Dimension

The Same Dimension uses a secret algorithm to generate beautiful new colors.



34.1871, 30.2446, 24.4584



56.6005, 47.4717, 34.3672



39.1736, 40.2176, 26.1206



9.6253, 9.7265, 9.9467



14.3719, 7.7826, 0.7447



0.5953, 0.3695, 0.0400

Inverse Universe

The Inverse Universe completely reimagines the original color for something new.



35.2390, 42.2163, 55.5815



58.7750, 72.3620, 99.1486



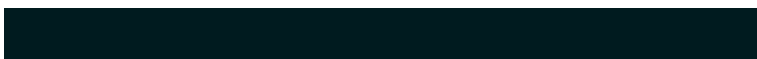
29.5590, 30.8563, 53.6882



9.7024, 10.5971, 12.2063



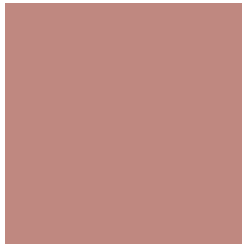
15.2706, 20.6530, 35.5745



0.6275, 0.8676, 1.4032

Previews

White Background



This preview shows how the XYZ color 34.1863, 30.2432, 24.4578 looks on a white background.

Color Contrast Check

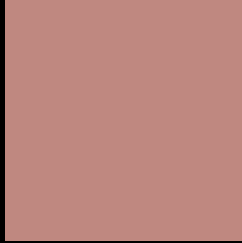
Large Text (above 18pt) WCAG AA × Fail

Any Text WCAG AA × Fail

Large Text (above 18pt) WCAG AAA × Fail

Any Text WCAG AAA × Fail

Black Background



This preview shows how the XYZ color 34.1863, 30.2432, 24.4578 looks on a black background.

Color Contrast Check

Large Text (above 18pt) WCAG AA ✓ Pass

Any Text WCAG AA ✓ Pass

Large Text (above 18pt) WCAG AAA ✓ Pass

Any Text WCAG AAA ✓ Pass

If you want to check with other color combinations, try the [Color Contrast Checker](#).

XYZ 34.1863, 30.2432, 24.4578

Background



This preview shows how black text looks on a background with the XYZ color 34.1863, 30.2432, 24.4578.



This preview shows how white text looks on a background with the XYZ color 34.1863, 30.2432, 24.4578.

24.4578.

Color Blindness Simulation

Color vision deficiency is a very complex topic, and I could not describe the different causes any better than Wikipedia does, so if you want to learn more, you should check out their [article about color blindness](#).

Dichromacy



Original Color

34.1863, 30.2432, 24.4578

Protanopia

28.8309, 30.3121, 27.2529

Deuteranopia

30.7524, 30.2235, 23.9516



Tritanopia

35.5515, 30.4013, 30.3798

Trichromacy



Original Color

34.1863, 30.2432, 24.4578

Protanomaly

30.5003, 30.0475, 26.0220

Deuteranomaly

31.9460, 30.1658, 24.2175

Tritanomaly

34.9896, 30.3694, 28.0625

Monochromacy



Original Color

34.1863, 30.2432, 24.4578

Achromatopsia

29.8446, 31.3989, 34.1934

Achromatomaly

30.9627, 30.6479, 30.2703

CSS Examples

Text

The CSS property to change the color of the text to XYZ 34.1863, 30.2432, 24.4578 is called "color". The color property can be set on classes, ids or directly on the HTML element.

This example shows how text in the color `rgb(191, 136, 128)` looks like.

```
.text, #text, p{  
    color:rgb(191, 136, 128)  
}
```

If you want to add a text shadow in that color use the text-shadow property, you can generate a text shadow directly with our [CSS Text Shadow Generator](#).

Here you see how black text with a 4 pixel rgb(191, 136, 128) colored shadow looks like.

```
.shadow{ text-shadow: 4px 4px 2px rgb(191, 136, 128) }
```

Border

The CSS property to change the border of an element to XYZ 34.1863, 30.2432, 24.4578 is called "border". The border property can be set on classes, ids or directly on the HTML element.

This example shows the color as border, it can be applied via the CSS property "border" or "border-color".

```
.border, #border, table{ border:4px solid rgb(191, 136, 128) }
```


If only the border color should be changed use the property `border-color`.

```
.border{ border-color:rgb(191, 136, 128) }
```

If you want to add a box shadow in that color use:

Here you see how a box with a 4 pixel `rgb(191, 136, 128)` colored shadow looks like.

```
.boxshadow{ -moz-box-shadow:4px 4px 4px  
4px rgb(191, 136, 128); -webkit-box-  
shadow:4px 4px 4px 4px rgb(191, 136, 128);  
box-shadow:4px 4px 4px 4px rgb(191, 136,  
128) }
```

Background

The CSS property to change the background color of an element to XYZ 34.1863, 30.2432, 24.4578 is called "background". The background property can be set on classes, ids or directly on the HTML element.

```
.background, #background, body{  
background: rgb(191, 136, 128) }
```

If only the background color should be changed can be used:

```
.background{ background-color: rgb(191,  
136, 128) }
```

This example shows the color as background, it is applied via the CSS property "background".

To optimize and compress your CSS code, you can use our [online CSS compressor and optimizer](#) based on csstidy. If you want to create a linear or radial gradient as background or border, check our [CSS Gradient Generator](#).

Hey! You found this booklet interesting? Support Converting Colors with the new Membership Option!

The pro membership hides all ads, plus gives you double the colors in the color bucket, and more awesome pro features!

[Learn more, Memberships starting at \\$2.50/m!](#)

**Follow me
on Twitter!**

@ConvertingColor