

Converting Colors

XYZ(34.3216, 34.8583, 28.5320)

Have a look what the booklet for
XYZ(34.3216, 34.8583, 28.5320)
contains.

XYZ(34.3083, 34.8132, 28.5783)	3
<i>Conversions</i>	4
<i>Details</i>	6
<i>Harmonies</i>	12
<i>Previews</i>	24
<i>Color Blindness Simulation</i>	28
<i>CSS Examples</i>	31

Color

**XYZ(34.3083, 34.8132,
28.5783)**

Conversions

Conversions Part 1

Format	Color
Hex	B09C89
RGB	176, 156, 137
RGB Percent	69%, 61%, 54%
CMY	0.3098, 0.3882, 0.4627
CMYK	0.00, 0.11, 0.22, 0.31
HSL	29°, 20%, 61%
HSV	29°, 22%, 69%
XYZ	34.3083, 34.8132, 28.5783
YIQ	159.8140, 18.0190, -1.6690

Conversions

Conversions Part 2

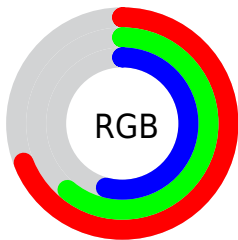
Format	Color
RYB	176, 174, 137
Decimal	11574409
CIELab	65.60, 4.27, 12.64
CIELCh	66, 13.343, 71.342
Yxy	34.8132, 0.3512, 0.3563
Android (android.graphics.Color)	4289764489 (0xFFB09C89)
YUV	159.8140, -11.2473, 14.1951
Hunter-Lab	59.0027, 0.5376, 12.5844

Details

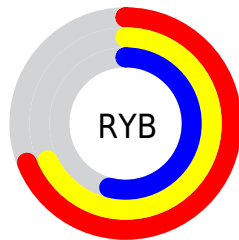
The XYZ color **34.3083, 34.8132, 28.5783** is a light color, and the websafe version is hex **999999**. A complement of this color would be **30.2097, 32.5660, 45.7681**, and the grayscale version is **33.3730, 35.1110, 38.2359**.

A 20% lighter version of the original color is **65.6196, 66.9667, 58.1825**, and **14.9403, 15.0022, 11.1251** is the 20% darker color. If you saturate the color by 10%, you get **31.6892, 31.4331, 21.9764**, and if you desaturate by 10%, it is **37.2478, 38.5039, 36.3039**.

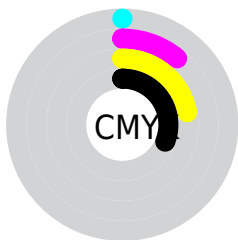
Distribution



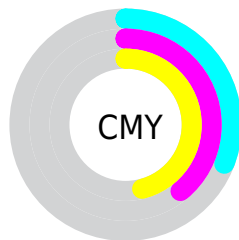
- Red (69%)
- Green (61%)
- Blue (54%)



- Red (69%)
- Yellow (68%)
- Blue (54%)



- Cyan (0%)
- Magenta (11%)
- Yellow (22%)
- Black (31%)



- Cyan (31%)
- Magenta (39%)
- Yellow (46%)

Brightness & Saturation Gradients

These gradients show how the XYZ color 34.3083, 34.8132, 28.5783 changes by changing the brightness by 10 percent. The first figure shows a shift by +10% for each color and the second figure -10%.

Similar to the brightness gradients but the following saturation gradients show a change of the XYZ color 34.3083, 34.8132, 28.5783 by changing the saturation by 10% instead.

■ 34.3083, 34.8132,
28.5783

■ 34.3083, 34.8132,
28.5783

313.0663,
323.7430, 309.2185

■ 23.2946, 23.5190,
18.5192

■ 65.7539, 67.1963,
58.4406

■ 14.9330, 14.9772,
11.1501

■ 86.9165, 89.0540,
79.0809

■ 8.8584, 8.8034,
6.0525

■ 112.1928,
115.2016, 104.0853

■ 4.7053, 4.6132,
2.8077

141.9480,
146.0236, 133.8724

■ 2.1084, 2.0221,
0.9973

176.5477,
181.9044, 168.8607

■ 0.6938, 0.6203,
0.0000

216.3570,

■ 0.0000, 0.0000,

223.2283, 209.4688

0.0000

261.7415,
270.3797, 256.1152

■ 34.3083, 34.8132,
28.5783

■ 34.3083, 34.8132,
28.5783

■ 31.6892, 31.4331,
21.9764

■ 37.2478, 38.5039,
36.3039

■ 29.3752, 28.3500,
16.4426

■ 40.5165, 42.5088,
45.2008

■ 27.3541, 25.5562,
11.9200

■ 44.1264, 46.8377,
55.3163

■ 25.6112, 23.0416,
8.3453

■ 48.0879, 51.4981,
66.6947

■ 24.1308, 20.7956,
5.6480

■ 52.4110, 56.4977,
79.3780

■ 22.8949, 18.8066,
3.7476

■ 57.1053, 61.8436,
93.4060

■ 21.8825, 17.0614,
2.5483

■ 61.3310, 67.2031,
104.3467

■ 21.2133, 15.8476,
1.9408

■ 63.7519, 72.0449,
105.1537

■ 66.3025, 77.1460,
106.0039

Harmonies

Analogous

The Analogous color harmony consists of three colors that are next to each other on the color wheel.



35.9974, 34.8132, 31.2187



34.3083, 34.8132, 28.5783



32.3538, 34.8132, 28.2843

Triad

The Triadic color harmony groups three colors that are evenly spaced from another and form a triangle on the color wheel.



34.3083, 34.8132, 28.5783



29.5323, 34.8132, 40.0665



35.6392, 34.8132, 46.5928

Complementary

The Complementary color scheme is a pair of colors which are on the opposite of each other on the color wheel.



34.3083, 34.8132, 28.5783



30.2097, 32.5660, 45.7681

Split Complementary

Split-complementary colors differ from the complementary color scheme. The scheme consists of three colors, the original color and two neighbors of the complement color.



33.8350, 34.8132, 49.4935



34.3083, 34.8132, 28.5783



30.3414, 34.8132, 45.4852

Square

The Square scheme is like the rectangle color scheme, but the four colors are evenly spaced on the color wheel.



34.3083, 34.8132, 28.5783



29.6478, 34.8132, 34.5591



31.8987, 34.8132, 49.0693



36.7865, 34.8132, 41.4616

Rectangle

The Rectangle color scheme consists of four colors that form a rectangle on the color wheel.



34.3083, 34.8132, 28.5783



31.1686, 34.8132, 29.4206



31.8987, 34.8132, 49.0693



35.0865, 34.8132, 47.8829

Sweetspot

The Sweet Spot groups the original color and five complimentary colors.



34.3092, 34.8148, 28.5790



70.4644, 73.4185, 73.6980



32.9491, 29.5613, 35.9351



15.1972, 15.8208, 15.7715



84.5950, 89.0005, 96.9216



16.2198, 17.0645, 18.5832

Same Dimension

The Same Dimension uses a secret algorithm to generate beautiful new colors.



34.3092, 34.8148, 28.5790



59.6297, 59.8147, 45.2216



37.8182, 41.8328, 29.7487



8.8268, 9.1660, 8.9565



15.6228, 11.7441, 1.4434



0.5500, 0.4865, 0.0649

Inverse Universe

The Inverse Universe completely reimagines the original color for something new.



30.2097, 32.5660, 45.7681



50.7563, 54.9468, 82.4259



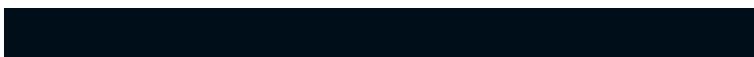
27.1918, 26.5301, 44.7621



8.3902, 8.9266, 10.7871



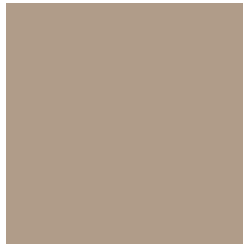
8.5060, 7.8124, 31.1966



0.3258, 0.3621, 1.0010

Previews

White Background



This preview shows how the XYZ color 34.3083, 34.8132, 28.5783 looks on a white background.

Color Contrast Check

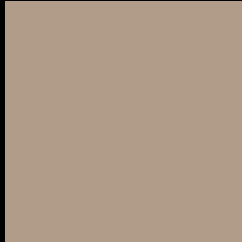
Large Text (above 18pt) WCAG AA × Fail

Any Text WCAG AA × Fail

Large Text (above 18pt) WCAG AAA × Fail

Any Text WCAG AAA × Fail

Black Background



This preview shows how the XYZ color 34.3083, 34.8132, 28.5783 looks on a black background.

Color Contrast Check

Large Text (above 18pt) WCAG AA ✓ Pass

Any Text WCAG AA ✓ Pass

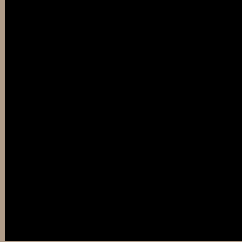
Large Text (above 18pt) WCAG AAA ✓ Pass

Any Text WCAG AAA ✓ Pass

If you want to check with other color combinations, try the [Color Contrast Checker](#).

XYZ 34.3083, 34.8132, 28.5783

Background



This preview shows how black text looks on a background with the XYZ color 34.3083, 34.8132, 28.5783.



This preview shows how white text looks on a background with the XYZ color 34.3083, 34.8132,

Color Blindness Simulation

Color vision deficiency is a very complex topic, and I could not describe the different causes any better than Wikipedia does, so if you want to learn more, you should check out their [article about color blindness](#).

Dichromacy



Original Color

34.3083, 34.8132, 28.5783

Protanopia

32.9219, 34.8467, 29.0357

Deuteranopia

35.4350, 34.6559, 28.4885



Tritanopia

36.5195, 34.7205, 39.8989

Trichromacy



Original Color

34.3083, 34.8132, 28.5783

Protanomaly

33.3919, 34.8347, 29.0086

Deuteranomaly

34.8933, 34.6206, 28.5103

Tritanomaly

35.5841, 34.5805, 35.3711

Monochromacy



Original Color

34.3083, 34.8132, 28.5783

Achromatopsia

33.4132, 35.1533, 38.2819

Achromatomaly

33.7915, 35.1703, 34.7133

CSS Examples

Text

The CSS property to change the color of the text to XYZ 34.3083, 34.8132, 28.5783 is called "color". The color property can be set on classes, ids or directly on the HTML element.

This example shows how text in the color `rgb(176, 156, 137)` looks like.

```
.text, #text, p{  
    color:rgb(176, 156, 137)  
}
```

If you want to add a text shadow in that color use the text-shadow property, you can generate a text shadow directly with our [CSS Text Shadow Generator](#).

Here you see how black text with a 4 pixel rgb(176, 156, 137) colored shadow looks like.

```
.shadow{ text-shadow: 4px 4px 2px rgb(176, 156, 137) }
```

Border

The CSS property to change the border of an element to XYZ 34.3083, 34.8132, 28.5783 is called "border". The border property can be set on classes, ids or directly on the HTML element.

This example shows the color as border, it can be applied via the CSS property "border" or "border-color".

```
.border, #border, table{ border:4px solid rgb(176, 156, 137) }
```


If only the border color should be changed use the property `border-color`.

```
.border{ border-color:rgb(176, 156, 137) }
```

If you want to add a box shadow in that color use:

Here you see how a box with a 4 pixel `rgb(176, 156, 137)` colored shadow looks like.

```
.boxshadow{ -moz-box-shadow:4px 4px 4px  
4px rgb(176, 156, 137); -webkit-box-  
shadow:4px 4px 4px 4px rgb(176, 156, 137);  
box-shadow:4px 4px 4px 4px rgb(176, 156,  
137) }
```

Background

The CSS property to change the background color of an element to XYZ 34.3083, 34.8132, 28.5783 is called "background". The background property can be set on classes, ids or directly on the HTML element.

```
.background, #background, body{  
background: rgb(176, 156, 137) }
```

If only the background color should be changed can be used:

```
.background{ background-color: rgb(176,  
156, 137) }
```

This example shows the color as background, it is applied via the CSS property "background".

To optimize and compress your CSS code, you can use our [online CSS compressor and optimizer](#) based on csstidy. If you want to create a linear or radial gradient as background or border, check our [CSS Gradient Generator](#).

Hey! You found this booklet interesting? Support Converting Colors with the new Membership Option!

The pro membership hides all ads, plus gives you double the colors in the color bucket, and more awesome pro features!

[Learn more, Memberships starting at \\$2.50/m!](#)

**Follow me
on Twitter!**

@ConvertingColor