

Converting Colors

XYZ(34.3787, 31.3300, 28.1863)

Have a look what the booklet for
XYZ(34.3787, 31.3300, 28.1863)
contains.

XYZ(34.3620, 31.3238, 28.2798)	3
<i>Conversions</i>	4
<i>Details</i>	6
<i>Harmonies</i>	12
<i>Previews</i>	24
<i>Color Blindness Simulation</i>	28
<i>CSS Examples</i>	31

Color

**XYZ(34.3620, 31.3238,
28.2798)**

Conversions

Conversions Part 1

Format	Color
Hex	BA8D8A
RGB	186, 141, 138
RGB Percent	73%, 55%, 54%
CMY	0.2706, 0.4470, 0.4588
CMYK	0.00, 0.24, 0.26, 0.27
HSL	4°, 26%, 64%
HSV	4°, 26%, 73%
XYZ	34.3620, 31.3238, 28.2798
YIQ	154.1130, 27.7830, 8.6070

Conversions

Conversions Part 2

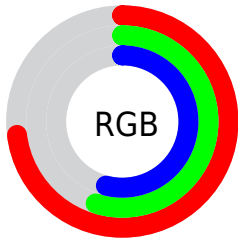
Format	Color
R _Y B	186, 141, 138
Decimal	12225930
CIE Lab	62.78, 16.62, 8.22
CIE LCh	63, 18.545, 26.320
Yxy	31.3238, 0.3657, 0.3334
Android (android.graphics.Color)	4290416010 (0xFFBA8D8A)
YUV	154.1130, -7.9437, 27.9649
Hunter-Lab	55.9677, 11.6487, 9.2188

Details

The XYZ color **34.3620, 31.3238, 28.2798** is a light color, and the websafe version is hex **CC9999**. A complement of this color would be **36.2772, 42.8142, 52.8065**, and the grayscale version is **30.7907, 32.3942, 35.2773**.

A 20% lighter version of the original color is **65.8812, 61.8465, 57.7555**, and **15.0183, 13.0923, 10.9680** is the 20% darker color. If you saturate the color by 10%, you get **30.7574, 26.0881, 20.9937**, and if you desaturate by 10%, it is **38.6037, 37.4642, 36.9167**.

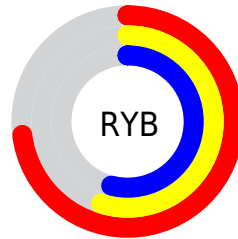
Distribution



Red (73%)

Green (55%)

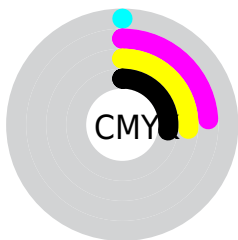
Blue (54%)



Red (73%)

Yellow (55%)

Blue (54%)

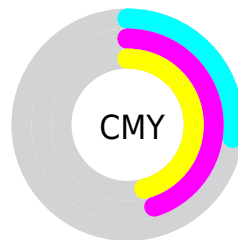


Cyan (0%)

Magenta (24%)

Yellow (26%)

Black (27%)



Cyan (27%)


Magenta (45%)


Yellow (46%)

Brightness & Saturation Gradients


These gradients show how the XYZ color 34.3620, 31.3238, 28.2798 changes by changing the brightness by 10 percent. The first figure shows a shift by +10% for each color and the second figure -10%.


Similar to the brightness gradients but the following saturation gradients show a change of the XYZ color 34.3620, 31.3238, 28.2798 by changing the saturation by 10% instead.


 34.3620, 31.3238,
28.2798


 34.3620, 31.3238,
28.2798


313.3008,
308.0273, 307.7554


 23.3360, 20.8455,
18.2958


 65.8368, 61.7495,
57.9593

 14.9639, 13.0111,
10.9909


 87.0163, 82.4657,
78.4919

 8.8802, 7.4362,
5.9466


 112.3111,
107.3634, 103.3778

 4.7196, 3.7364,
2.7444

142.0864,
136.8269, 133.0355

 2.1168, 1.5272,
0.9657

176.7077,
171.2407, 167.8836

 0.6983, 0.3078,
0.0000

216.5403,

 0.0000, 0.0000,

210.9891, 208.3406

0.0000

261.9495,
256.4565, 254.8250

■ 34.3620, 31.3238,
28.2798

■ 34.3620, 31.3238,
28.2798

■ 30.7574, 26.0881,
20.9937

■ 38.6037, 37.4642,
36.9167

■ 27.7567, 21.7102,
14.9884

■ 43.5086, 44.5446,
46.9659

■ 25.3276, 18.1457,
10.1904

■ 49.1043, 52.6037,
58.4874

■ 23.4337, 15.3444,
6.5178

■ 55.4161, 61.6769,
71.5371

■ 22.0344, 13.2506,
3.8790

■ 62.4682, 71.7976,
86.1681

■ 21.0834, 11.8009,
2.1675

■ 70.2834, 82.9978,
102.4309

■ 20.5246, 10.9203,
1.2501

■ 74.0598, 89.1791,
107.9177

■ 20.3769, 10.6934,
0.9901

Harmonies

Analogous

The Analogous color harmony consists of three colors that are next to each other on the color wheel.



34.9102, 31.3238, 35.0109



34.3620, 31.3238, 28.2798



32.5601, 31.3238, 23.7522

Triad

The Triadic color harmony groups three colors that are evenly spaced from another and form a triangle on the color wheel.



34.3620, 31.3238, 28.2798



25.8950, 31.3238, 26.9310



29.4603, 31.3238, 50.0329

Complementary

The Complementary color scheme is a pair of colors which are on the opposite of each other on the color wheel.



34.3620, 31.3238, 28.2798



36.2772, 42.8142, 52.8065

Split Complementary

Split-complementary colors differ from the complementary color scheme. The scheme consists of three colors, the original color and two neighbors of the complement color.



27.1484, 31.3238, 47.1019



34.3620, 31.3238, 28.2798



25.1650, 31.3238, 33.2174

Square

The Square scheme is like the rectangle color scheme, but the four colors are evenly spaced on the color wheel.



34.3620, 31.3238, 28.2798



27.6616, 31.3238, 23.0546



25.6107, 31.3238, 40.6827



31.9878, 31.3238, 48.2227

Rectangle

The Rectangle color scheme consists of four colors that form a rectangle on the color wheel.



34.3620, 31.3238, 28.2798



30.9409, 31.3238, 22.2539



25.6107, 31.3238, 40.6827



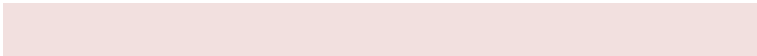
28.6335, 31.3238, 49.5599

Sweetspot

The Sweet Spot groups the original color and five complimentary colors.



34.3628, 31.3253, 28.2804



76.6835, 77.5980, 80.6564



37.9483, 32.0604, 49.3162



16.5824, 16.6488, 17.1371



90.7827, 95.5105, 104.0109



18.6292, 19.5994, 21.3438

Same Dimension

The Same Dimension uses a secret algorithm to generate beautiful new colors.



34.3628, 31.3253, 28.2804



58.4173, 51.1658, 43.4302



38.1846, 38.9687, 29.5543



9.0485, 9.1000, 9.3865



13.7290, 7.2344, 0.6728



0.4993, 0.2857, 0.0288

Inverse Universe

The Inverse Universe completely reimagines the original color for something new.



36.2772, 42.8142, 52.8065



62.4771, 75.5458, 95.4903



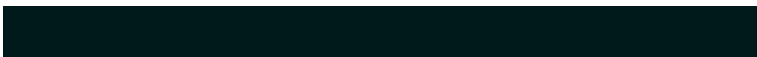
31.8461, 33.9519, 51.3294



9.2173, 10.1118, 11.5454



16.2134, 22.8864, 34.8161



0.5862, 0.8360, 1.2322

Previews

White Background



This preview shows how the XYZ color 34.3620, 31.3238, 28.2798 looks on a white background.

Color Contrast Check

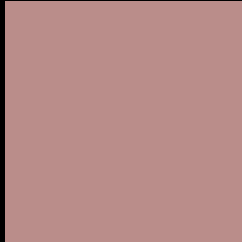
Large Text (above 18pt) WCAG AA × Fail

Any Text WCAG AA × Fail

Large Text (above 18pt) WCAG AAA × Fail

Any Text WCAG AAA × Fail

Black Background



This preview shows how the XYZ color 34.3620, 31.3238, 28.2798 looks on a black background.

Color Contrast Check

Large Text (above 18pt) WCAG AA ✓ Pass

Any Text WCAG AA ✓ Pass

Large Text (above 18pt) WCAG AAA ✓ Pass

Any Text WCAG AAA ✓ Pass

If you want to check with other color combinations, try the [Color Contrast Checker](#).

XYZ 34.3620, 31.3238, 28.2798

Background



This preview shows how black text looks on a background with the XYZ color 34.3620, 31.3238, 28.2798.



This preview shows how white text looks on a background with the XYZ color 34.3620, 31.3238,

Color Blindness Simulation

Color vision deficiency is a very complex topic, and I could not describe the different causes any better than Wikipedia does, so if you want to learn more, you should check out their [article about color blindness](#).

Dichromacy



Original Color

34.3620, 31.3238, 28.2798

Protanopia

30.1669, 31.6382, 30.9024

Deuteranopia

31.9623, 31.4442, 28.0517



Tritanopia

35.2312, 31.2320, 33.0257

Trichromacy



Original Color

34.3620, 31.3238, 28.2798

Protanomaly

31.6208, 31.4576, 29.9965

Deuteranomaly

32.7722, 31.4041, 28.0012

Tritanomaly

35.0599, 31.3963, 31.4064

Monochromacy



Original Color

34.3620, 31.3238, 28.2798

Achromatopsia

30.7148, 32.3143, 35.1903

Achromatomaly

31.8186, 31.7400, 32.4664

CSS Examples

Text

The CSS property to change the color of the text to XYZ 34.3620, 31.3238, 28.2798 is called "color". The color property can be set on classes, ids or directly on the HTML element.

This example shows how text in the color `rgb(186, 141, 138)` looks like.

```
.text, #text, p{  
    color:rgb(186, 141, 138)  
}
```

If you want to add a text shadow in that color use the text-shadow property, you can generate a text shadow directly with our [CSS Text Shadow Generator](#).

Here you see how black text with a 4 pixel rgb(186, 141, 138) colored shadow looks like.

```
.shadow{ text-shadow: 4px 4px 2px rgb(186, 141, 138) }
```

Border

The CSS property to change the border of an element to XYZ 34.3620, 31.3238, 28.2798 is called "border". The border property can be set on classes, ids or directly on the HTML element.

This example shows the color as border, it can be applied via the CSS property "border" or "border-color".

```
.border, #border, table{ border:4px solid rgb(186, 141, 138) }
```


If only the border color should be changed use the property `border-color`.

```
.border{ border-color:rgb(186, 141, 138) }
```

If you want to add a box shadow in that color use:

Here you see how a box with a 4 pixel `rgb(186, 141, 138)` colored shadow looks like.

```
.boxshadow{ -moz-box-shadow:4px 4px 4px  
4px rgb(186, 141, 138); -webkit-box-  
shadow:4px 4px 4px 4px rgb(186, 141, 138);  
box-shadow:4px 4px 4px 4px rgb(186, 141,  
138) }
```

Background

The CSS property to change the background color of an element to XYZ 34.3620, 31.3238, 28.2798 is called "background". The background property can be set on classes, ids or directly on the HTML element.

```
.background, #background, body{  
background: rgb(186, 141, 138) }
```

If only the background color should be changed can be used:

```
.background{ background-color: rgb(186,  
141, 138) }
```

This example shows the color as background, it is applied via the CSS property "background".

To optimize and compress your CSS code, you can use our [online CSS compressor and optimizer](#) based on csstidy. If you want to create a linear or radial gradient as background or border, check our [CSS Gradient Generator](#).

Hey! You found this booklet interesting? Support Converting Colors with the new Membership Option!

The pro membership hides all ads, plus gives you double the colors in the color bucket, and more awesome pro features!

[Learn more, Memberships starting at \\$2.50/m!](#)

**Follow me
on Twitter!**

@ConvertingColor