

Converting Colors

XYZ(34.4617, 31.7565, 31.1014)

Have a look what the booklet for
XYZ(34.4617, 31.7565, 31.1014)
contains.

XYZ(34.4617, 31.7565, 31.1014)	3
<i>Conversions</i>	4
<i>Details</i>	6
<i>Harmonies</i>	12
<i>Previews</i>	24
<i>Color Blindness Simulation</i>	28
<i>CSS Examples</i>	31

Color

**XYZ(34.4617, 31.7565,
31.1014)**

Conversions

Conversions Part 1

Format	Color
Hex	B78F91
RGB	183, 143, 145
RGB Percent	72%, 56%, 57%
CMY	0.2824, 0.4392, 0.4314
CMYK	0.00, 0.22, 0.21, 0.28
HSL	357°, 22%, 64%
HSV	357°, 22%, 72%
XYZ	34.4617, 31.7565, 31.1014
YIQ	155.1880, 23.1980, 9.1020

Conversions

Conversions Part 2

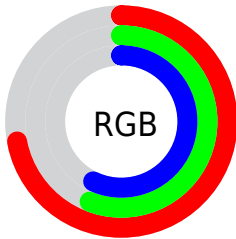
Format	Color
RYB	183, 143, 145
Decimal	12029841
CIELab	63.14, 15.41, 4.73
CIELCh	63, 16.121, 17.080
Yxy	31.7565, 0.3541, 0.3263
Android (android.graphics.Color)	4290219921 (0xFFB78F91)
YUV	155.1880, -5.0227, 24.3911
Hunter-Lab	56.3529, 10.5412, 6.7246

Details

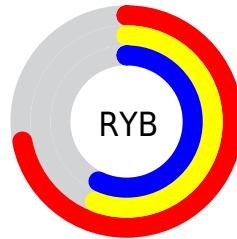
The XYZ color **34.4617, 31.7565, 31.1014** is a light color, and the websafe version is hex **CC9999**. A complement of this color would be **36.6029, 43.0435, 50.0971**, and the grayscale version is **31.2540, 32.8816, 35.8081**.

A 20% lighter version of the original color is **66.2102, 62.5813, 62.6226**, and **15.0332, 13.3221, 12.6056** is the 20% darker color. If you saturate the color by 10%, you get **30.6957, 26.2082, 23.7302**, and if you desaturate by 10%, it is **38.8828, 38.2861, 39.7040**.

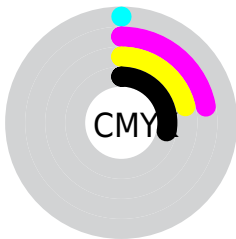
Distribution



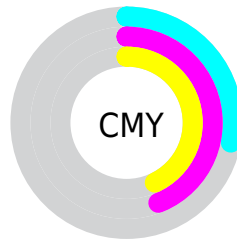
- Red (72%)
- Green (56%)
- Blue (57%)



- Red (72%)
- Yellow (56%)
- Blue (57%)



- Cyan (0%)
- Magenta (22%)
- Yellow (21%)
- Black (28%)




- Cyan (28%)
- Magenta (44%)
- Yellow (43%)

Brightness & Saturation Gradients


These gradients show how the XYZ color 34.4617, 31.7565, 31.1014 changes by changing the brightness by 10 percent. The first figure shows a shift by +10% for each color and the second figure -10%.


Similar to the brightness gradients but the following saturation gradients show a change of the XYZ color 34.4617, 31.7565, 31.1014 by changing the saturation by 10% instead.


 34.4617, 31.7565,
31.1014


 34.4617, 31.7565,
31.1014


313.7357,
310.0085, 321.3708

 23.4131, 21.1756,
20.4170


 65.9905, 62.4292,
62.4811

 15.0212, 13.2524,
12.5114


 87.2015, 83.2897,
84.0135

 8.9207, 7.6026,
6.9662


112.5306,
108.3456, 109.9989

 4.7462, 3.8417,
3.3629

142.3432,
137.9811, 140.8560

 2.1323, 1.5854,
1.2828

177.0046,
172.5808, 177.0031

 0.7067, 0.3477,
0.0476

216.8803,

 0.0000, 0.0000,

212.5290, 218.8590

0.0000

262.3355,
258.2101, 266.8420

■ 34.4617, 31.7565,
31.1014

■ 34.4617, 31.7565,
31.1014

■ 30.6957, 26.2082,
23.7302

■ 38.8828, 38.2861,
39.7040

■ 27.5512, 21.5897,
17.5322

■ 43.9853, 45.8365,
49.5885

■ 24.9956, 17.8514,
12.4475

■ 49.7972, 54.4505,
60.8052

■ 22.9921, 14.9375,
8.4100

■ 56.3444, 64.1670,
73.4010

■ 21.5000, 12.7855,
5.3469

■ 63.6512, 75.0231,
87.4205

■ 20.4728, 11.3243,
3.1757

■ 71.7410, 87.0541,
102.9063

■ 19.8556, 10.4693,
1.8005

■ 73.3385, 88.8073,
107.8839

■ 19.5786, 10.0873,
1.1775

Harmonies

Analogous

The Analogous color harmony consists of three colors that are next to each other on the color wheel.



34.5496, 31.7565, 37.3907



34.4617, 31.7565, 31.1014



33.1925, 31.7565, 26.3568

Triad

The Triadic color harmony groups three colors that are evenly spaced from another and form a triangle on the color wheel.



34.4617, 31.7565, 31.1014



27.1571, 31.7565, 26.8851



29.2369, 31.7565, 47.9510

Complementary

The Complementary color scheme is a pair of colors which are on the opposite of each other on the color wheel.



34.4617, 31.7565, 31.1014



36.6029, 43.0435, 50.0971

Split Complementary

Split-complementary colors differ from the complementary color scheme. The scheme consists of three colors, the original color and two neighbors of the complement color.



27.3623, 31.7565, 44.3510



34.4617, 31.7565, 31.1014



26.2018, 31.7565, 31.9089

Square

The Square scheme is like the rectangle color scheme, but the four colors are evenly spaced on the color wheel.



34.4617, 31.7565, 31.1014



28.9441, 31.7565, 24.1357



26.2751, 31.7565, 38.3033



31.4580, 31.7565, 47.6652

Rectangle

The Rectangle color scheme consists of four colors that form a rectangle on the color wheel.



34.4617, 31.7565, 31.1014



31.8810, 31.7565, 24.4733



26.2751, 31.7565, 38.3033



28.5475, 31.7565, 47.1382

Sweetspot

The Sweet Spot groups the original color and five complimentary colors.



34.4626, 31.7580, 31.1021



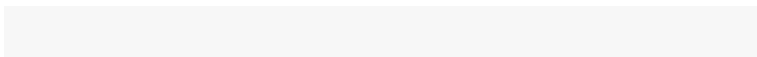
73.8144, 74.7463, 79.2082



37.4266, 32.8890, 49.1755



16.1842, 16.3328, 17.2637



88.6918, 93.3107, 101.6153



17.8044, 18.7317, 20.3988

Same Dimension

The Same Dimension uses a secret algorithm to generate beautiful new colors.



34.4626, 31.7580, 31.1021



58.4940, 52.1191, 49.3967



37.2321, 37.5413, 31.2722



9.0223, 9.0193, 9.4648



13.6659, 7.0401, 0.8616



0.4879, 0.2507, 0.0629

Inverse Universe

The Inverse Universe completely reimagines the original color for something new.



34.4626, 31.7580, 31.1021



58.4940, 52.1191, 49.3967



33.3313, 36.1700, 50.0247



9.0223, 9.0193, 9.4648



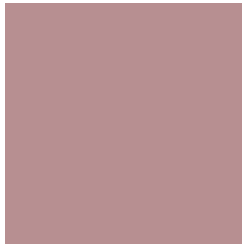
13.6659, 7.0401, 0.8616



0.4879, 0.2507, 0.0629

Previews

White Background



This preview shows how the XYZ color 34.4617, 31.7565, 31.1014 looks on a white background.

Color Contrast Check

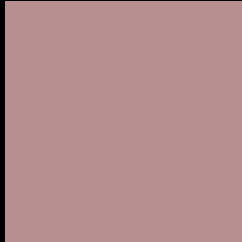
Large Text (above 18pt) WCAG AA × Fail

Any Text WCAG AA × Fail

Large Text (above 18pt) WCAG AAA × Fail

Any Text WCAG AAA × Fail

Black Background



This preview shows how the XYZ color 34.4617, 31.7565, 31.1014 looks on a black background.

Color Contrast Check

Large Text (above 18pt) WCAG AA ✓ Pass

Any Text WCAG AA ✓ Pass

Large Text (above 18pt) WCAG AAA ✓ Pass

Any Text WCAG AAA ✓ Pass

If you want to check with other color combinations, try the [Color Contrast Checker](#).

XYZ 34.4617, 31.7565, 31.1014

Background



This preview shows how black text looks on a background with the XYZ color 34.4617, 31.7565, 31.1014.



This preview shows how white text looks on a background with the XYZ color 34.4617, 31.7565,

Color Blindness Simulation

Color vision deficiency is a very complex topic, and I could not describe the different causes any better than Wikipedia does, so if you want to learn more, you should check out their [article about color blindness](#).

Dichromacy



Original Color

34.4617, 31.7565, 31.1014

Protanopia

30.4436, 31.7264, 33.3734

Deuteranopia

32.4185, 31.8514, 30.8248



Tritanopia

35.1899, 31.8363, 34.4273

Trichromacy



Original Color

34.4617, 31.7565, 31.1014

Protanomaly

31.8186, 31.7400, 32.4664

Deuteranomaly

32.9921, 31.6853, 30.7626

Tritanomaly

34.9452, 31.7384, 33.1385

Monochromacy



Original Color

34.4617, 31.7565, 31.1014

Achromatopsia

31.1553, 32.7778, 35.6950

Achromatomaly

32.1696, 32.3669, 33.8301

CSS Examples

Text

The CSS property to change the color of the text to XYZ 34.4617, 31.7565, 31.1014 is called "color". The color property can be set on classes, ids or directly on the HTML element.

This example shows how text in the color `rgb(183, 143, 145)` looks like.

```
.text, #text, p{  
    color:rgb(183, 143, 145)  
}
```

If you want to add a text shadow in that color use the text-shadow property, you can generate a text shadow directly with our [CSS Text Shadow Generator](#).

Here you see how black text with a 4 pixel rgb(183, 143, 145) colored shadow looks like.

```
.shadow{ text-shadow: 4px 4px 2px rgb(183, 143, 145) }
```

Border

The CSS property to change the border of an element to XYZ 34.4617, 31.7565, 31.1014 is called "border". The border property can be set on classes, ids or directly on the HTML element.

This example shows the color as border, it can be applied via the CSS property "border" or "border-color".

```
.border, #border, table{ border:4px solid rgb(183, 143, 145) }
```


If only the border color should be changed use the property `border-color`.

```
.border{ border-color:rgb(183, 143, 145) }
```

If you want to add a box shadow in that color use:

Here you see how a box with a 4 pixel `rgb(183, 143, 145)` colored shadow looks like.

```
.boxshadow{ -moz-box-shadow:4px 4px 4px  
4px rgb(183, 143, 145); -webkit-box-  
shadow:4px 4px 4px 4px rgb(183, 143, 145);  
box-shadow:4px 4px 4px 4px rgb(183, 143,  
145) }
```

Background

The CSS property to change the background color of an element to XYZ 34.4617, 31.7565, 31.1014 is called "background". The background property can be set on classes, ids or directly on the HTML element.

```
.background, #background, body{  
background: rgb(183, 143, 145) }
```

If only the background color should be changed can be used:

```
.background{ background-color: rgb(183,  
143, 145) }
```

This example shows the color as background, it is applied via the CSS property "background".

To optimize and compress your CSS code, you can use our [online CSS compressor and optimizer](#) based on csstidy. If you want to create a linear or radial gradient as background or border, check our [CSS Gradient Generator](#).

Hey! You found this booklet interesting? Support Converting Colors with the new Membership Option!

The pro membership hides all ads, plus gives you double the colors in the color bucket, and more awesome pro features!

[Learn more, Memberships starting at \\$2.50/m!](#)

**Follow me
on Twitter!**

@ConvertingColor