

Converting Colors

XYZ(34.5424, 31.3396, 29.2559)

Have a look what the booklet for
XYZ(34.5424, 31.3396, 29.2559)
contains.

XYZ(34.5823, 31.4119, 29.4397)	3
<i>Conversions</i>	4
<i>Details</i>	6
<i>Harmonies</i>	12
<i>Previews</i>	24
<i>Color Blindness Simulation</i>	28
<i>CSS Examples</i>	31

Color

**XYZ(34.5823, 31.4119,
29.4397)**

Conversions

Conversions Part 1

Format	Color
Hex	BA8D8D
RGB	186, 141, 141
RGB Percent	73%, 55%, 55%
CMY	0.2706, 0.4470, 0.4471
CMYK	0.00, 0.24, 0.24, 0.27
HSL	0°, 25%, 64%
HSV	0°, 24%, 73%
XYZ	34.5823, 31.4119, 29.4397
YIQ	154.4550, 26.8200, 9.5400

Conversions

Conversions Part 2

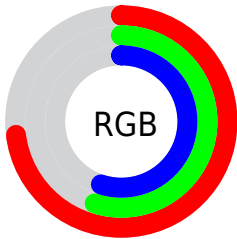
Format	Color
RYB	186, 141, 141
Decimal	12225933
CIELab	62.85, 17.06, 6.63
CIELCh	63, 18.306, 21.228
Yxy	31.4119, 0.3624, 0.3291
Android (android.graphics.Color)	4290416013 (0xFFBA8D8D)
YUV	154.4550, -6.6333, 27.6650
Hunter-Lab	56.0463, 12.0589, 8.0889

Details

The XYZ color **34.5823, 31.4119, 29.4397** is a light color, and the websafe version is hex **CC9999**. A complement of this color would be **37.4059, 44.3246, 53.0387**, and the grayscale version is **30.9359, 32.5469, 35.4436**.

A 20% lighter version of the original color is **66.3276, 62.0250, 60.1059**, and **15.1451, 13.1430, 11.6362** is the 20% darker color. If you saturate the color by 10%, you get **30.7971, 25.8732, 21.9137**, and if you desaturate by 10%, it is **39.0622, 37.9675, 38.3447**.

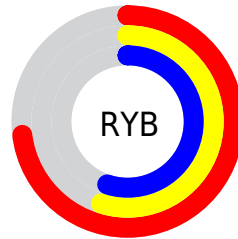
Distribution



Red (73%)

Green (55%)

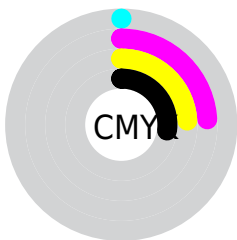
Blue (55%)



Red (73%)

Yellow (55%)

Blue (55%)

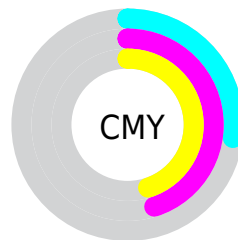


Cyan (0%)

Magenta (24%)

Yellow (24%)

Black (27%)



Cyan (27%)


Magenta (45%)


Yellow (45%)

Brightness & Saturation Gradients

These gradients show how the XYZ color 34.5823, 31.4119, 29.4397 changes by changing the brightness by 10 percent. The first figure shows a shift by +10% for each color and the second figure -10%.


Similar to the brightness gradients but the following saturation gradients show a change of the XYZ color 34.5823, 31.4119, 29.4397 by changing the saturation by 10% instead.


 34.5823, 31.4119,
29.4397


 34.5823, 31.4119,
29.4397


314.2612,
308.4315, 313.4096


 23.5063, 20.9127,
19.1653


 66.1765, 61.8880,
59.8255

 15.0905, 13.0602,
11.6117


 87.4254, 82.6337,
80.7738

 8.9697, 7.4700,
6.3606


 112.7959,
107.5636, 106.1173

 4.7784, 3.7577,
2.9932

142.6535,
137.0623, 136.2744

 2.1512, 1.5390,
1.0912

177.3634,
171.5140, 171.6636

 0.7168, 0.3159,
0.0000

217.2911,

 0.0000, 0.0000,

211.3031, 212.7035

0.0000

262.8019,
256.8142, 259.8127

■ 34.5823, 31.4119,
29.4397

■ 34.5823, 31.4119,
29.4397

■ 30.7971, 25.8732,
21.9137

■ 39.0622, 37.9675,
38.3447

■ 27.6693, 21.2965,
15.6960

■ 44.2665, 45.5827,
48.6907

■ 25.1625, 17.6281,
10.7126

■ 50.2260, 54.3032,
60.5383

■ 23.2351, 14.8077,
6.8812

■ 56.9694, 64.1704,
73.9441

■ 21.8408, 12.7674,
4.1096

■ 64.5234, 75.2240,
88.9618

■ 20.9261, 11.4290,
2.2916

■ 72.9139, 87.5015,
105.6424

■ 20.4266, 10.6980,
1.2989

■ 74.0598, 89.1792,
107.9177

■ 20.2500, 10.4395,
0.9477

Harmonies

Analogous

The Analogous color harmony consists of three colors that are next to each other on the color wheel.



34.8820, 31.4119, 36.3526



34.5823, 31.4119, 29.4397



32.9800, 31.4119, 24.5220

Triad

The Triadic color harmony groups three colors that are evenly spaced from another and form a triangle on the color wheel.



34.5823, 31.4119, 29.4397



26.2507, 31.4119, 26.2596



29.1264, 31.4119, 49.7539

Complementary

The Complementary color scheme is a pair of colors which are on the opposite of each other on the color wheel.



34.5823, 31.4119, 29.4397



37.4059, 44.3246, 53.0387

Split Complementary

Split-complementary colors differ from the complementary color scheme. The scheme consists of three colors, the original color and two neighbors of the complement color.



26.9359, 31.4119, 46.1439



34.5823, 31.4119, 29.4397



25.3377, 31.4119, 32.1383

Square

The Square scheme is like the rectangle color scheme, but the four colors are evenly spaced on the color wheel.



34.5823, 31.4119, 29.4397



28.1432, 31.4119, 22.8727



25.5813, 31.4119, 39.4525



31.6371, 31.4119, 48.7644

Rectangle

The Rectangle color scheme consists of four colors that form a rectangle on the color wheel.



34.5823, 31.4119, 29.4397



31.4355, 31.4119, 22.7182



25.5813, 31.4119, 39.4525



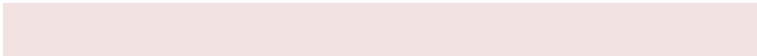
28.3305, 31.4119, 49.0215

Sweetspot

The Sweet Spot groups the original color and five complimentary colors.



34.5832, 31.4134, 29.4403



77.3391, 78.3832, 82.4968



38.6378, 33.0344, 50.7945



16.9030, 17.0734, 17.9119



90.7827, 95.5105, 104.0109



18.6292, 19.5994, 21.3438

Same Dimension

The Same Dimension uses a secret algorithm to generate beautiful new colors.



34.5832, 31.4134, 29.4403



58.9031, 51.4061, 45.8463



38.2439, 38.7349, 30.6606



9.0047, 9.0123, 9.3719



13.6235, 7.0234, 0.6376



0.4803, 0.2476, 0.0225

Inverse Universe

The Inverse Universe completely reimagines the original color for something new.



37.4059, 44.3246, 53.0387



64.9023, 78.8462, 95.9995



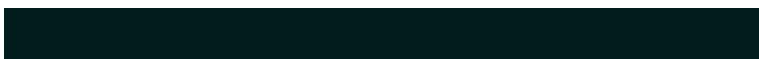
33.0339, 35.5806, 51.5813



9.2667, 10.2105, 11.5619



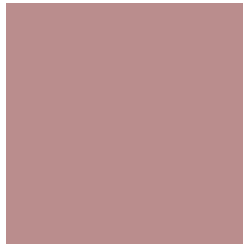
17.7738, 26.0073, 35.3362



0.6266, 0.9169, 1.2457

Previews

White Background



This preview shows how the XYZ color 34.5823, 31.4119, 29.4397 looks on a white background.

Color Contrast Check

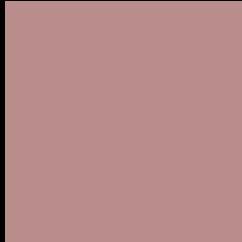
Large Text (above 18pt) WCAG AA × Fail

Any Text WCAG AA × Fail

Large Text (above 18pt) WCAG AAA × Fail

Any Text WCAG AAA × Fail

Black Background



This preview shows how the XYZ color 34.5823, 31.4119, 29.4397 looks on a black background.

Color Contrast Check

Large Text (above 18pt) WCAG AA ✓ Pass

Any Text WCAG AA ✓ Pass

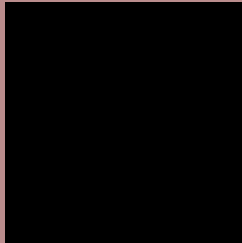
Large Text (above 18pt) WCAG AAA ✓ Pass

Any Text WCAG AAA ✓ Pass

If you want to check with other color combinations, try the [Color Contrast Checker](#).

XYZ 34.5823, 31.4119, 29.4397

Background



This preview shows how black text looks on a background with the XYZ color 34.5823, 31.4119, 29.4397.



This preview shows how white text looks on a background with the XYZ color 34.5823, 31.4119,

Color Blindness Simulation

Color vision deficiency is a very complex topic, and I could not describe the different causes any better than Wikipedia does, so if you want to learn more, you should check out their [article about color blindness](#).

Dichromacy



Original Color

34.5823, 31.4119, 29.4397

Protanopia

30.2050, 31.6310, 32.1172

Deuteranopia

32.1806, 31.5315, 29.2010



Tritanopia

35.3766, 31.5230, 33.0742

Trichromacy



Original Color

34.5823, 31.4119, 29.4397

Protanomaly

31.6371, 31.4396, 31.1891

Deuteranomaly

32.9905, 31.4914, 29.1506

Tritanomaly

35.1381, 31.4275, 31.8179

Monochromacy



Original Color

34.5823, 31.4119, 29.4397

Achromatopsia

30.7148, 32.3143, 35.1903

Achromatomaly

31.8981, 31.7718, 32.8851

CSS Examples

Text

The CSS property to change the color of the text to XYZ 34.5823, 31.4119, 29.4397 is called "color". The color property can be set on classes, ids or directly on the HTML element.

This example shows how text in the color `rgb(186, 141, 141)` looks like.

```
.text, #text, p{  
    color:rgb(186, 141, 141)  
}
```

If you want to add a text shadow in that color use the text-shadow property, you can generate a text shadow directly with our [CSS Text Shadow Generator](#).

Here you see how black text with a 4 pixel rgb(186, 141, 141) colored shadow looks like.

```
.shadow{ text-shadow: 4px 4px 2px rgb(186, 141, 141) }
```

Border

The CSS property to change the border of an element to XYZ 34.5823, 31.4119, 29.4397 is called "border". The border property can be set on classes, ids or directly on the HTML element.

This example shows the color as border, it can be applied via the CSS property "border" or "border-color".

```
.border, #border, table{ border:4px solid rgb(186, 141, 141) }
```


If only the border color should be changed use the property `border-color`.

```
.border{ border-color:rgb(186, 141, 141) }
```

If you want to add a box shadow in that color use:

Here you see how a box with a 4 pixel `rgb(186, 141, 141)` colored shadow looks like.

```
.boxshadow{ -moz-box-shadow:4px 4px 4px  
4px rgb(186, 141, 141); -webkit-box-  
shadow:4px 4px 4px 4px rgb(186, 141, 141);  
box-shadow:4px 4px 4px 4px rgb(186, 141,  
141) }
```

Background

The CSS property to change the background color of an element to XYZ 34.5823, 31.4119, 29.4397 is called "background". The background property can be set on classes, ids or directly on the HTML element.

```
.background, #background, body{  
background: rgb(186, 141, 141) }
```

If only the background color should be changed can be used:

```
.background{ background-color: rgb(186,  
141, 141) }
```

This example shows the color as background, it is applied via the CSS property "background".

To optimize and compress your CSS code, you can use our [online CSS compressor and optimizer](#) based on csstidy. If you want to create a linear or radial gradient as background or border, check our [CSS Gradient Generator](#).

Hey! You found this booklet interesting? Support Converting Colors with the new Membership Option!

The pro membership hides all ads, plus gives you double the colors in the color bucket, and more awesome pro features!

[Learn more, Memberships starting at \\$2.50/m!](#)

**Follow me
on Twitter!**

@ConvertingColor