

Converting Colors

XYZ(34.5631, 31.6133, 29.8715)

Have a look what the booklet for
XYZ(34.5631, 31.6133, 29.8715)
contains.

XYZ(34.5631, 31.6133, 29.8715)	3
<i>Conversions</i>	4
<i>Details</i>	6
<i>Harmonies</i>	12
<i>Previews</i>	24
<i>Color Blindness Simulation</i>	28
<i>CSS Examples</i>	31

Color

**XYZ(34.5631, 31.6133,
29.8715)**

Conversions

Conversions Part 1

Format	Color
Hex	B98E8E
RGB	185, 142, 142
RGB Percent	73%, 56%, 56%
CMY	0.2745, 0.4431, 0.4431
CMYK	0.00, 0.23, 0.23, 0.27
HSL	0°, 23%, 64%
HSV	0°, 23%, 73%
XYZ	34.5631, 31.6133, 29.8715
YIQ	154.8570, 25.6280, 9.1160

Conversions

Conversions Part 2

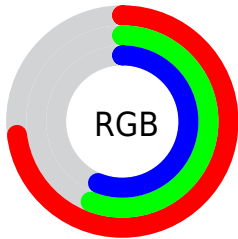
Format	Color
R _Y B	185, 142, 142
Decimal	12160654
CIE Lab	63.02, 16.27, 6.29
CIE LCh	63, 17.446, 21.130
Yxy	31.6133, 0.3599, 0.3291
Android (android.graphics.Color)	4290350734 (0xFFB98E8E)
YUV	154.8570, -6.3385, 26.4354
Hunter-Lab	56.2257, 11.3326, 7.8585

Details

The XYZ color **34.5631, 31.6133, 29.8715** is a light color, and the websafe version is hex **CC9999**. A complement of this color would be **37.2608, 43.9503, 52.4186**, and the grayscale version is **31.1124, 32.7327, 35.6459**.

A 20% lighter version of the original color is **66.3217, 62.3426, 60.7624**, and **15.1190, 13.2523, 11.8863** is the 20% darker color. If you saturate the color by 10%, you get **30.7602, 26.0488, 22.3104**, and if you desaturate by 10%, it is **39.0550, 38.1864, 38.8003**.

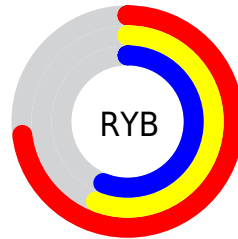
Distribution



Red (73%)

Green (56%)

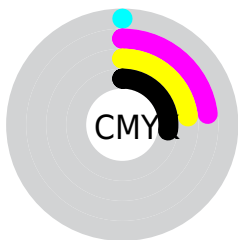
Blue (56%)



Red (73%)

Yellow (56%)

Blue (56%)

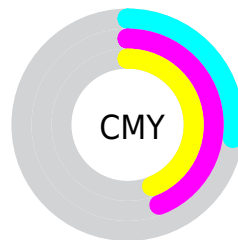


Cyan (0%)

Magenta (23%)

Yellow (23%)

Black (27%)



Cyan (27%)


Magenta (44%)


Yellow (44%)

Brightness & Saturation Gradients


These gradients show how the XYZ color 34.5631, 31.6133, 29.8715 changes by changing the brightness by 10 percent. The first figure shows a shift by +10% for each color and the second figure -10%.


Similar to the brightness gradients but the following saturation gradients show a change of the XYZ color 34.5631, 31.6133, 29.8715 by changing the saturation by 10% instead.

 34.5631, 31.6133,
29.8715


 34.5631, 31.6133,
29.8715


314.1776,
309.3539, 315.4937


 23.4915, 21.0663,
19.4898


 66.1469, 62.2044,
60.5175

 15.0795, 13.1725,
11.8444

 87.3897, 83.0172,
81.6189

 8.9619, 7.5474,
6.5165


 112.7537,
108.0209, 107.1307

 4.7732, 3.8067,
3.0878

142.6041,
137.5996, 137.4714

 2.1482, 1.5661,
1.1396

177.3063,
172.1379, 173.0595

 0.7152, 0.3346,
0.0000

217.2258,

 0.0000, 0.0000,

212.0201, 214.3135

0.0000

262.7277,
257.6307, 261.6521

■ 34.5631, 31.6133,
29.8715

■ 34.5631, 31.6133,
29.8715

■ 30.7602, 26.0488,
22.3104

■ 39.0550, 38.1864,
38.8003

■ 27.6099, 21.4390,
16.0478

■ 44.2649, 45.8099,
49.1576

■ 25.0763, 17.7315,
11.0111

■ 50.2233, 54.5286,
61.0030

■ 23.1189, 14.8672,
7.1201

■ 56.9581, 64.3834,
74.3918

■ 21.6926, 12.7801,
4.2849

■ 64.4957, 75.4129,
89.3769

■ 20.7454, 11.3940,
2.4022

■ 72.8615, 87.6542,
106.0084

■ 20.2150, 10.6177,
1.3481

■ 73.8177, 89.0544,
107.9063

■ 20.0079, 10.3147,
0.9364

Harmonies

Analogous

The Analogous color harmony consists of three colors that are next to each other on the color wheel.



34.8440, 31.6133, 36.5009



34.5631, 31.6133, 29.8715



33.0390, 31.6133, 25.1188

Triad

The Triadic color harmony groups three colors that are evenly spaced from another and form a triangle on the color wheel.



34.5631, 31.6133, 29.8715



26.5943, 31.6133, 26.7725



29.3412, 31.6133, 49.2088

Complementary

The Complementary color scheme is a pair of colors which are on the opposite of each other on the color wheel.



34.5631, 31.6133, 29.8715



37.2608, 43.9503, 52.4186

Split Complementary

Split-complementary colors differ from the complementary color scheme. The scheme consists of three colors, the original color and two neighbors of the complement color.



27.2422, 31.6133, 45.7769



34.5631, 31.6133, 29.8715



25.7127, 31.6133, 32.4227

Square

The Square scheme is like the rectangle color scheme, but the four colors are evenly spaced on the color wheel.



34.5631, 31.6133, 29.8715



28.4137, 31.6133, 23.5023



25.9434, 31.6133, 39.4116



31.7428, 31.6133, 48.2870

Rectangle

The Rectangle color scheme consists of four colors that form a rectangle on the color wheel.



34.5631, 31.6133, 29.8715



31.5656, 31.6133, 23.3642



25.9434, 31.6133, 39.4116



28.5789, 31.6133, 48.5109

Sweetspot

The Sweet Spot groups the original color and five complimentary colors.



34.5640, 31.6148, 29.8721



75.5090, 76.5301, 80.5482



38.4379, 33.1635, 50.2745



16.1580, 16.3225, 17.1257



88.6918, 93.3107, 101.6153



17.8044, 18.7317, 20.3988

Same Dimension

The Same Dimension uses a secret algorithm to generate beautiful new colors.



34.5640, 31.6148, 29.8721



58.2010, 51.2038, 46.1402



38.0766, 38.6400, 31.0430



9.0047, 9.0123, 9.3719



13.6235, 7.0234, 0.6376



0.4803, 0.2476, 0.0225

Inverse Universe

The Inverse Universe completely reimagines the original color for something new.



37.2608, 43.9503, 52.4186



63.8956, 77.2508, 93.7478



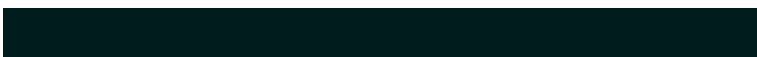
33.0988, 35.6263, 51.0313



9.2666, 10.2105, 11.5619



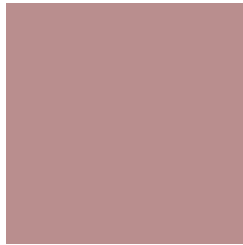
17.7736, 26.0070, 35.3361



0.6266, 0.9169, 1.2457

Previews

White Background



This preview shows how the XYZ color 34.5631, 31.6133, 29.8715 looks on a white background.

Color Contrast Check

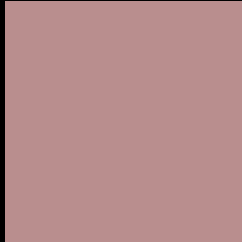
Large Text (above 18pt) WCAG AA × Fail

Any Text WCAG AA × Fail

Large Text (above 18pt) WCAG AAA × Fail

Any Text WCAG AAA × Fail

Black Background



This preview shows how the XYZ color 34.5631, 31.6133, 29.8715 looks on a black background.

Color Contrast Check

Large Text (above 18pt) WCAG AA ✓ Pass

Any Text WCAG AA ✓ Pass

Large Text (above 18pt) WCAG AAA ✓ Pass

Any Text WCAG AAA ✓ Pass

If you want to check with other color combinations, try the [Color Contrast Checker](#).

XYZ 34.5631, 31.6133, 29.8715

Background



This preview shows how black text looks on a background with the XYZ color 34.5631, 31.6133, 29.8715.



This preview shows how white text looks on a background with the XYZ color 34.5631, 31.6133,

Color Blindness Simulation

Color vision deficiency is a very complex topic, and I could not describe the different causes any better than Wikipedia does, so if you want to learn more, you should check out their [article about color blindness](#).

Dichromacy



Original Color

34.5631, 31.6133, 29.8715

Protanopia

30.4782, 31.7627, 32.5414

Deuteranopia

32.2547, 31.5612, 29.5912



Tritanopia

35.3605, 31.7232, 33.5377

Trichromacy



Original Color

34.5631, 31.6133, 29.8715

Protanomaly

31.7146, 31.4706, 31.5970

Deuteranomaly

33.0646, 31.5210, 29.5408

Tritanomaly

35.1199, 31.6270, 32.2706

Monochromacy



Original Color

34.5631, 31.6133, 29.8715

Achromatopsia

31.1553, 32.7778, 35.6950

Achromatomaly

32.1373, 32.1217, 33.3605

CSS Examples

Text

The CSS property to change the color of the text to XYZ 34.5631, 31.6133, 29.8715 is called "color". The color property can be set on classes, ids or directly on the HTML element.

This example shows how text in the color `rgb(185, 142, 142)` looks like.

```
.text, #text, p{  
    color:rgb(185, 142, 142)  
}
```

If you want to add a text shadow in that color use the text-shadow property, you can generate a text shadow directly with our [CSS Text Shadow Generator](#).

Here you see how black text with a 4 pixel rgb(185, 142, 142) colored shadow looks like.

```
.shadow{ text-shadow: 4px 4px 2px rgb(185, 142, 142) }
```

Border

The CSS property to change the border of an element to XYZ 34.5631, 31.6133, 29.8715 is called "border". The border property can be set on classes, ids or directly on the HTML element.

This example shows the color as border, it can be applied via the CSS property "border" or "border-color".

```
.border, #border, table{ border:4px solid rgb(185, 142, 142) }
```


If only the border color should be changed use the property `border-color`.

```
.border{ border-color:rgb(185, 142, 142) }
```

If you want to add a box shadow in that color use:

Here you see how a box with a 4 pixel `rgb(185, 142, 142)` colored shadow looks like.

```
.boxshadow{ -moz-box-shadow:4px 4px 4px  
4px rgb(185, 142, 142); -webkit-box-  
shadow:4px 4px 4px 4px rgb(185, 142, 142);  
box-shadow:4px 4px 4px 4px rgb(185, 142,  
142) }
```

Background

The CSS property to change the background color of an element to XYZ 34.5631, 31.6133, 29.8715 is called "background". The background property can be set on classes, ids or directly on the HTML element.

```
.background, #background, body{  
background: rgb(185, 142, 142) }
```

If only the background color should be changed can be used:

```
.background{ background-color: rgb(185,  
142, 142) }
```

This example shows the color as background, it is applied via the CSS property "background".

To optimize and compress your CSS code, you can use our [online CSS compressor and optimizer](#) based on csstidy. If you want to create a linear or radial gradient as background or border, check our [CSS Gradient Generator](#).

Hey! You found this booklet interesting? Support Converting Colors with the new Membership Option!

The pro membership hides all ads, plus gives you double the colors in the color bucket, and more awesome pro features!

[Learn more, Memberships starting at \\$2.50/m!](#)

**Follow me
on Twitter!**

@ConvertingColor