

Converting Colors

XYZ(34.6002, 32.0383, 29.0530)

Have a look what the booklet for
XYZ(34.6002, 32.0383, 29.0530)
contains.

XYZ(34.7145, 32.1543, 29.1877)	3
<i>Conversions</i>	4
<i>Details</i>	6
<i>Harmonies</i>	12
<i>Previews</i>	24
<i>Color Blindness Simulation</i>	28
<i>CSS Examples</i>	31

Color

**XYZ(34.7145, 32.1543,
29.1877)**

Conversions

Conversions Part 1

Format	Color
Hex	B9908C
RGB	185, 144, 140
RGB Percent	73%, 56%, 55%
CMY	0.2745, 0.4353, 0.4510
CMYK	0.00, 0.22, 0.24, 0.27
HSL	5°, 24%, 64%
HSV	5°, 24%, 73%
XYZ	34.7145, 32.1543, 29.1877
YIQ	155.8030, 25.7200, 7.4480

Conversions

Conversions Part 2

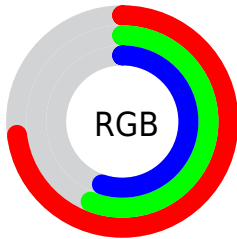
Format	Color
R _Y B	185, 144, 140
Decimal	12161164
CIE Lab	63.47, 14.86, 8.06
CIE LCh	63, 16.907, 28.477
Yxy	32.1543, 0.3614, 0.3347
Android (android.graphics.Color)	4290351244 (0xFFB9908C)
YUV	155.8030, -7.7909, 25.6058
Hunter-Lab	56.7048, 10.0439, 9.1749

Details

The XYZ color **34.7145, 32.1543, 29.1877** is a light color, and the websafe version is hex **CC9999**. A complement of this color would be **36.0956, 42.1248, 52.1276**, and the grayscale version is **31.5385, 33.1809, 36.1340**.

A 20% lighter version of the original color is **66.5496, 63.1605, 59.7226**, and **15.1199, 13.3922, 11.4609** is the 20% darker color. If you saturate the color by 10%, you get **31.0985, 26.9248, 21.8086**, and if you desaturate by 10%, it is **38.9427, 38.2407, 37.9031**.

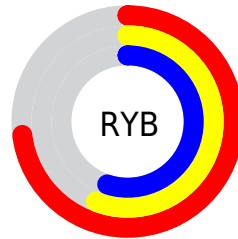
Distribution



Red (73%)

Green (56%)

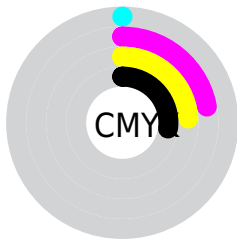
Blue (55%)



Red (73%)

Yellow (56%)

Blue (55%)

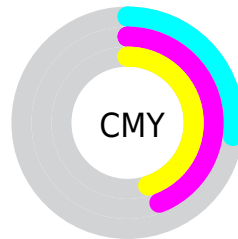


Cyan (0%)

Magenta (22%)

Yellow (24%)

Black (27%)



Cyan (27%)


Magenta (44%)


Yellow (45%)

Brightness & Saturation Gradients


These gradients show how the XYZ color 34.7145, 32.1543, 29.1877 changes by changing the brightness by 10 percent. The first figure shows a shift by +10% for each color and the second figure -10%.


Similar to the brightness gradients but the following saturation gradients show a change of the XYZ color 34.7145, 32.1543, 29.1877 by changing the saturation by 10% instead.


 34.7145, 32.1543,
29.1877


 34.7145, 32.1543,
29.1877


314.8365,
311.8215, 312.1882

 23.6085, 21.4794,
18.9761


 66.3802, 63.0529,
59.4209

 15.1666, 13.4749,
11.4763


 87.6706, 84.0454,
80.2796

 9.0235, 7.7563,
6.2700


 113.0865,
109.2458, 105.5243

 4.8137, 3.9394,
2.9385

142.9934,
139.0387, 135.5737

 2.1720, 1.6397,
1.0633

177.7564,
173.8082, 170.8462

 0.7279, 0.3842,
0.0000

217.7410,

 0.0000, 0.0000,

213.9390, 211.7604

0.0000

263.3126,
259.8153, 258.7349

■ 34.7145, 32.1543,
29.1877

■ 34.7145, 32.1543,
29.1877

■ 31.0985, 26.9248,
21.8086

■ 38.9427, 38.2407,
37.9031

■ 28.0639, 22.5096,
15.6979

■ 43.8069, 45.2154,
48.0142

■ 25.5809, 18.8689,
10.7846

■ 49.3330, 53.1136,
59.5792

■ 23.6163, 15.9580,
6.9899

■ 55.5444, 61.9674,
72.6526

■ 22.1329, 13.7276,
4.2258

■ 62.4636, 71.8073,
87.2858

■ 21.0890, 12.1221,
2.3907

■ 70.1120, 82.6624,
103.5281

■ 20.4352, 11.0773,
1.3627

■ 73.8177, 89.0543,
107.9063

■ 20.1999, 10.6987,
1.0004

Harmonies

Analogous

The Analogous color harmony consists of three colors that are next to each other on the color wheel.



35.3122, 32.1543, 35.3563



34.7145, 32.1543, 29.1877



32.9893, 32.1543, 25.0844

Triad

The Triadic color harmony groups three colors that are evenly spaced from another and form a triangle on the color wheel.



34.7145, 32.1543, 29.1877



26.8643, 32.1543, 28.6623



30.4415, 32.1543, 49.6296

Complementary

The Complementary color scheme is a pair of colors which are on the opposite of each other on the color wheel.



34.7145, 32.1543, 29.1877



36.0956, 42.1248, 52.1276

Split Complementary

Split-complementary colors differ from the complementary color scheme. The scheme consists of three colors, the original color and two neighbors of the complement color.



28.2562, 32.1543, 47.2607



34.7145, 32.1543, 29.1877



26.2576, 32.1543, 34.6671

Square

The Square scheme is like the rectangle color scheme, but the four colors are evenly spaced on the color wheel.



34.7145, 32.1543, 29.1877



28.4544, 32.1543, 24.8096



26.7540, 32.1543, 41.5605



32.7705, 32.1543, 47.6828

Rectangle

The Rectangle color scheme consists of four colors that form a rectangle on the color wheel.



34.7145, 32.1543, 29.1877



31.4746, 32.1543, 23.7853



26.7540, 32.1543, 41.5605



29.6666, 32.1543, 49.3064

Sweetspot

The Sweet Spot groups the original color and five complimentary colors.



34.7154, 32.1558, 29.1884



75.9091, 77.3303, 80.6816



37.7521, 32.4173, 48.1183



16.2507, 16.5079, 17.1566



88.6918, 93.3107, 101.6153



17.8044, 18.7317, 20.3988

Same Dimension

The Same Dimension uses a secret algorithm to generate beautiful new colors.



34.7154, 32.1558, 29.1884



58.7051, 52.5788, 45.1776



38.4232, 39.5715, 30.4243



9.0672, 9.1373, 9.3927



13.7783, 7.3329, 0.6892



0.5073, 0.3018, 0.0315

Inverse Universe

The Inverse Universe completely reimagines the original color for something new.



36.0956, 42.1248, 52.1276



61.5867, 73.4104, 93.1283



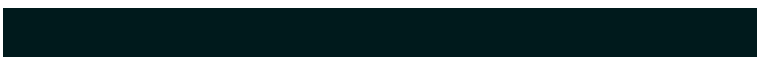
31.9277, 33.7890, 50.7383



9.1965, 10.0703, 11.5385



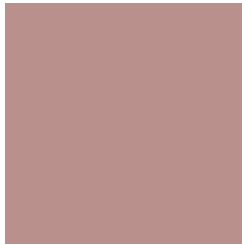
15.5927, 21.6450, 34.6092



0.5698, 0.8033, 1.2268

Previews

White Background



This preview shows how the XYZ color 34.7145, 32.1543, 29.1877 looks on a white background.

Color Contrast Check

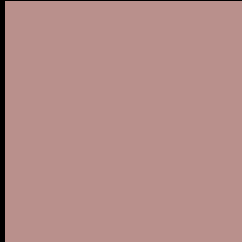
Large Text (above 18pt) WCAG AA × Fail

Any Text WCAG AA × Fail

Large Text (above 18pt) WCAG AAA × Fail

Any Text WCAG AAA × Fail

Black Background



This preview shows how the XYZ color 34.7145, 32.1543, 29.1877 looks on a black background.

Color Contrast Check

Large Text (above 18pt) WCAG AA ✓ Pass

Any Text WCAG AA ✓ Pass

Large Text (above 18pt) WCAG AAA ✓ Pass

Any Text WCAG AAA ✓ Pass

If you want to check with other color combinations, try the [Color Contrast Checker](#).

XYZ 34.7145, 32.1543, 29.1877

Background



This preview shows how black text looks on a background with the XYZ color 34.7145, 32.1543, 29.1877.



This preview shows how white text looks on a background with the XYZ color 34.7145, 32.1543,

Color Blindness Simulation

Color vision deficiency is a very complex topic, and I could not describe the different causes any better than Wikipedia does, so if you want to learn more, you should check out their [article about color blindness](#).

Dichromacy



Original Color

34.7145, 32.1543, 29.1877

Protanopia

30.8001, 32.1977, 31.3795

Deuteranopia

32.7057, 32.0426, 28.8872



Tritanopia

35.6725, 32.0850, 34.4499

Trichromacy



Original Color

34.7145, 32.1543, 29.1877

Protanomaly

32.0127, 32.1207, 30.4993

Deuteranomaly

33.4540, 32.1965, 28.8774

Tritanomaly

35.4175, 32.2221, 32.3698

Monochromacy



Original Color

34.7145, 32.1543, 29.1877

Achromatopsia

31.5995, 33.2452, 36.2040

Achromatomaly

32.6696, 32.8740, 33.4776

CSS Examples

Text

The CSS property to change the color of the text to XYZ 34.7145, 32.1543, 29.1877 is called "color". The color property can be set on classes, ids or directly on the HTML element.

This example shows how text in the color `rgb(185, 144, 140)` looks like.

```
.text, #text, p{  
    color:rgb(185, 144, 140)  
}
```

If you want to add a text shadow in that color use the text-shadow property, you can generate a text shadow directly with our [CSS Text Shadow Generator](#).

Here you see how black text with a 4 pixel rgb(185, 144, 140) colored shadow looks like.

```
.shadow{ text-shadow: 4px 4px 2px rgb(185, 144, 140) }
```

Border

The CSS property to change the border of an element to XYZ 34.7145, 32.1543, 29.1877 is called "border". The border property can be set on classes, ids or directly on the HTML element.

This example shows the color as border, it can be applied via the CSS property "border" or "border-color".

```
.border, #border, table{ border:4px solid rgb(185, 144, 140) }
```


If only the border color should be changed use the property `border-color`.

```
.border{ border-color:rgb(185, 144, 140) }
```

If you want to add a box shadow in that color use:

Here you see how a box with a 4 pixel `rgb(185, 144, 140)` colored shadow looks like.

```
.boxshadow{ -moz-box-shadow:4px 4px 4px  
4px rgb(185, 144, 140); -webkit-box-  
shadow:4px 4px 4px 4px rgb(185, 144, 140);  
box-shadow:4px 4px 4px 4px rgb(185, 144,  
140) }
```

Background

The CSS property to change the background color of an element to XYZ 34.7145, 32.1543, 29.1877 is called "background". The background property can be set on classes, ids or directly on the HTML element.

```
.background, #background, body{  
background: rgb(185, 144, 140) }
```

If only the background color should be changed can be used:

```
.background{ background-color: rgb(185,  
144, 140) }
```

This example shows the color as background, it is applied via the CSS property "background".

To optimize and compress your CSS code, you can use our [online CSS compressor and optimizer](#) based on csstidy. If you want to create a linear or radial gradient as background or border, check our [CSS Gradient Generator](#).

Hey! You found this booklet interesting? Support Converting Colors with the new Membership Option!

The pro membership hides all ads, plus gives you double the colors in the color bucket, and more awesome pro features!

[Learn more, Memberships starting at \\$2.50/m!](#)

**Follow me
on Twitter!**

@ConvertingColor