

# Converting Colors

XYZ(34.6892, 31.9590, 27.2621)

Have a look what the booklet for  
XYZ(34.6892, 31.9590, 27.2621)  
contains.

<b>XYZ(34.6892, 31.9590, 27.2621)</b> .....	3
<b><i>Conversions</i></b> .....	4
<b><i>Details</i></b> .....	6
<b><i>Harmonies</i></b> .....	12
<b><i>Previews</i></b> .....	24
<b><i>Color Blindness Simulation</i></b> .....	28
<b><i>CSS Examples</i></b> .....	31

# Color

**XYZ(34.6892, 31.9590,  
27.2621)**

# Conversions

## Conversions Part 1

<b>Format</b>	<b>Color</b>
Hex	BB8F87
RGB	187, 143, 135
RGB Percent	73%, 56%, 53%
CMY	0.2667, 0.4392, 0.4706
CMYK	0.00, 0.24, 0.28, 0.27
HSL	9°, 28%, 63%
HSV	9°, 28%, 73%
XYZ	34.6892, 31.9590, 27.2621
YIQ	155.2440, 28.7920, 6.8400

# Conversions

## Conversions Part 2

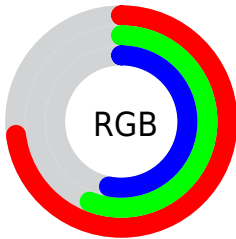
<b>Format</b>	<b>Color</b>
<b>RYB</b>	187, 144, 135
Decimal	12291975
CIELab	63.31, 15.47, 10.68
CIElCh	63, 18.800, 34.631
Yxy	31.9590, 0.3694, 0.3403
Android (android.graphics.Color)	4290482055 (0xFFBB8F87)
YUV	155.2440, -9.9803, 27.8500
Hunter-Lab	56.5323, 10.5992, 10.9806

# Details

The XYZ color **34.6892, 31.9590, 27.2621** is a light color, and the websafe version is hex **CC9999**. A complement of this color would be **35.0811, 40.9779, 53.0745**, and the grayscale version is **31.2984, 32.9284, 35.8590**.

A 20% lighter version of the original color is **66.3516, 62.7964, 56.2008**, and **15.2269, 13.4711, 10.3920** is the 20% darker color. If you saturate the color by 10%, you get **31.2766, 27.0589, 20.1894**, and if you desaturate by 10%, it is **38.6698, 37.6247, 35.6657**.

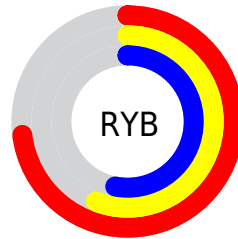
# Distribution



Red (73%)

Green (56%)

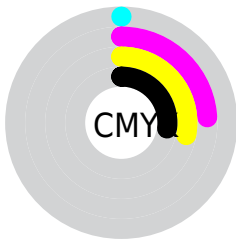
Blue (53%)



Red (73%)

Yellow (56%)

Blue (53%)

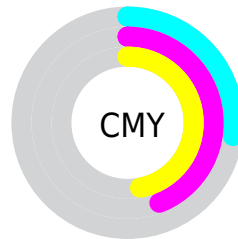


Cyan (0%)

Magenta (24%)

Yellow (28%)

Black (27%)



Cyan (27%)

Magenta (44%)


Yellow (47%)


# Brightness & Saturation Gradients

These gradients show how the XYZ color 34.6892, 31.9590, 27.2621 changes by changing the brightness by 10 percent. The first figure shows a shift by +10% for each color and the second figure -10%.


Similar to the brightness gradients but the following saturation gradients show a change of the XYZ color 34.6892, 31.9590, 27.2621 by changing the saturation by 10% instead.





 34.6892, 31.9590,  
27.2621


 34.6892, 31.9590,  
27.2621


314.7264,  
310.9324, 302.7242


 23.5890, 21.3302,  
17.5360


 66.3412, 62.7468,  
56.3130

 15.1521, 13.3656,  
10.4514


 87.6237, 83.6746,  
76.4749

 9.0132, 7.6808,  
5.5898

 113.0309,  
108.8042, 100.9524

 4.8070, 3.8914,  
2.5326

142.9283,  
138.5199, 130.1642

 2.1680, 1.6130,  
0.8573

177.6812,  
173.2062, 164.5287

 0.7258, 0.3663,  
0.0000

217.6550,

 0.0000, 0.0000,

213.2475, 204.4645

0.0000

263.2149,  
259.0281, 250.3901

■ 34.6892, 31.9590,  
27.2621

■ 34.6892, 31.9590,  
27.2621

■ 31.2766, 27.0589,  
20.1894

■ 38.6698, 37.6247,  
35.6657

■ 28.4034, 22.8870,  
14.3774

■ 43.2402, 44.0821,  
45.4618

■ 26.0423, 19.4098,  
9.7522

■ 48.4242, 51.3618,  
56.7103

■ 24.1626, 16.5892,  
6.2314

■ 54.2434, 59.4914,  
69.4672

■ 22.7302, 14.3835,  
3.7222

■ 60.7185, 68.4972,  
83.7854

■ 21.7063, 12.7459,  
2.1163

■ 67.8690, 78.4043,  
99.7153

■ 21.0394, 11.6205,  
1.2518

■ 73.9085, 88.5146,  
107.7974

■ 20.9277, 11.4329,  
1.1038

■ 74.3036, 89.3049,  
107.9291

# Harmonies

## Analogous

The Analogous color harmony consists of three colors that are next to each other on the color wheel.



35.6501, 31.9590, 33.6520



34.6892, 31.9590, 27.2621



32.5743, 31.9590, 23.3736

# Triad

The Triadic color harmony groups three colors that are evenly spaced from another and form a triangle on the color wheel.



34.6892, 31.9590, 27.2621



26.0691, 31.9590, 29.0035



30.7825, 31.9590, 51.1540

# Complementary

The Complementary color scheme is a pair of colors which are on the opposite of each other on the color wheel.



34.6892, 31.9590, 27.2621



35.0811, 40.9779, 53.0745

# Split Complementary

Split-complementary colors differ from the complementary color scheme. The scheme consists of three colors, the original color and two neighbors of the complement color.



28.2790, 31.9590, 49.4445



34.6892, 31.9590, 27.2621



25.6496, 31.9590, 35.9696

# Square

The Square scheme is like the rectangle color scheme, but the four colors are evenly spaced on the color wheel.



34.6892, 31.9590, 27.2621



27.6161, 31.9590, 24.2736



26.4362, 31.9590, 43.6083



33.3140, 31.9590, 47.9944



# Rectangle

The Rectangle color scheme consists of four colors that form a rectangle on the color wheel.



34.6892, 31.9590, 27.2621



30.8475, 31.9590, 22.3748



26.4362, 31.9590, 43.6083



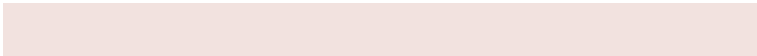
29.9095, 31.9590, 51.1331

# Sweetspot

The Sweet Spot groups the original color and five complimentary colors.



34.6901, 31.9605, 27.2628



77.1619, 78.5549, 80.8159



37.3148, 31.1559, 46.8012



16.7050, 16.8942, 17.1780



90.7827, 95.5105, 104.0109



18.6292, 19.5994, 21.3438



# Same Dimension

The Same Dimension uses a secret algorithm to generate beautiful new colors.



34.6901, 31.9605, 27.2628



58.5073, 52.0502, 41.2889



39.0178, 40.6160, 28.7053



9.6456, 9.7671, 9.9535



14.4538, 7.9464, 0.7720



0.6042, 0.3874, 0.0429



# Inverse Universe

The Inverse Universe completely reimagines the original color for something new.



35.0811, 40.9779, 53.0745



59.3091, 70.7028, 94.7225



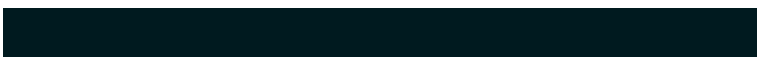
30.3857, 31.5872, 51.5094



9.6801, 10.5525, 12.1989



14.6730, 19.4576, 35.3753

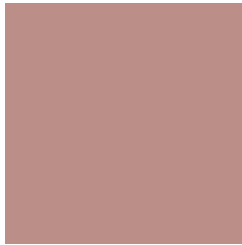


0.6090, 0.8308, 1.3971



# Previews

## White Background



This preview shows how the XYZ color 34.6892, 31.9590, 27.2621 looks on a white background.

## Color Contrast Check

Large Text (above 18pt) WCAG AA × Fail

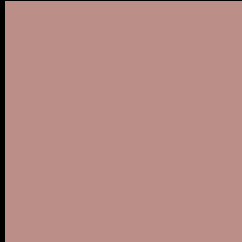
Any Text WCAG AA × Fail

Large Text (above 18pt) WCAG AAA × Fail

Any Text WCAG AAA × Fail



# Black Background



This preview shows how the XYZ color 34.6892, 31.9590, 27.2621 looks on a black background.

## Color Contrast Check

Large Text (above 18pt) WCAG AA ✓ Pass

Any Text WCAG AA ✓ Pass

Large Text (above 18pt) WCAG AAA ✓ Pass

Any Text WCAG AAA ✓ Pass

If you want to check with other color combinations, try the [Color Contrast Checker](#).

**XYZ 34.6892, 31.9590, 27.2621**

## **Background**



This preview shows how black text looks on a background with the XYZ color 34.6892, 31.9590, 27.2621.



This preview shows how white text looks on a background with the XYZ color 34.6892, 31.9590,



# Color Blindness Simulation

Color vision deficiency is a very complex topic, and I could not describe the different causes any better than Wikipedia does, so if you want to learn more, you should check out their [article about color blindness](#).

## Dichromacy



### Original Color

34.6892, 31.9590, 27.2621

### Protanopia

30.4229, 32.0468, 29.3931

### Deuteranopia

32.5722, 32.0150, 27.0170



## Tritanopia

36.0971, 32.1029, 33.5721

# Trichromacy



## Original Color

34.6892, 31.9590, 27.2621

## Protanomaly

31.6971, 31.7649, 28.5054

## Deuteranomaly

33.1724, 31.8627, 26.9560

## Tritanomaly

35.5229, 32.0817, 31.1082

# Monochromacy



## Original Color

34.6892, 31.9590, 27.2621

## Achromatopsia

31.1553, 32.7778, 35.6950

## Achromatomaly

32.3483, 32.4868, 32.5826

# CSS Examples

## Text

The CSS property to change the color of the text to XYZ 34.6892, 31.9590, 27.2621 is called "color". The color property can be set on classes, ids or directly on the HTML element.

This example shows how text in the color `rgb(187, 143, 135)` looks like.

```
.text, #text, p{  
    color:rgb(187, 143, 135)  
}
```

If you want to add a text shadow in that color use the text-shadow property, you can generate a text shadow directly with our [CSS Text Shadow Generator](#).

Here you see how black text with a 4 pixel rgb(187, 143, 135) colored shadow looks like.

```
.shadow{ text-shadow: 4px 4px 2px rgb(187, 143, 135) }
```

## Border

The CSS property to change the border of an element to XYZ 34.6892, 31.9590, 27.2621 is called "border". The border property can be set on classes, ids or directly on the HTML element.

This example shows the color as border, it can be applied via the CSS property "border" or "border-color".

```
.border, #border, table{ border:4px solid rgb(187, 143, 135) }
```



If only the border color should be changed use the property `border-color`.

```
.border{ border-color:rgb(187, 143, 135) }
```

If you want to add a box shadow in that color use:

Here you see how a box with a 4 pixel `rgb(187, 143, 135)` colored shadow looks like.

```
.boxshadow{ -moz-box-shadow:4px 4px 4px  
4px rgb(187, 143, 135); -webkit-box-  
shadow:4px 4px 4px 4px rgb(187, 143, 135);  
box-shadow:4px 4px 4px 4px rgb(187, 143,  
135) }
```

# Background

The CSS property to change the background color of an element to XYZ 34.6892, 31.9590, 27.2621 is called "background". The background property can be set on classes, ids or directly on the HTML element.

```
.background, #background, body{  
background: rgb(187, 143, 135) }
```

If only the background color should be changed can be used:

```
.background{ background-color: rgb(187,  
143, 135) }
```

This example shows the color as background, it is applied via the CSS property "background".

To optimize and compress your CSS code, you can use our [online CSS compressor and optimizer](#) based on csstidy. If you want to create a linear or radial gradient as background or border, check our [CSS Gradient Generator](#).

Hey! You found this booklet interesting? Support Converting Colors with the new Membership Option!

The pro membership hides all ads, plus gives you double the colors in the color bucket, and more awesome pro features!

**[Learn more, Memberships starting at \\$2.50/m!](#)**

**Follow me  
on Twitter!**

@ConvertingColor