

Converting Colors

XYZ(34.7172, 34.3077, 32.0394)

Have a look what the booklet for
XYZ(34.7172, 34.3077, 32.0394)
contains.

XYZ(34.7110, 34.2049, 31.9669)	3
<i>Conversions</i>	4
<i>Details</i>	6
<i>Harmonies</i>	12
<i>Previews</i>	24
<i>Color Blindness Simulation</i>	28
<i>CSS Examples</i>	31

Color

**XYZ(34.7110, 34.2049,
31.9669)**

Conversions

Conversions Part 1

Format	Color
Hex	B19992
RGB	177, 153, 146
RGB Percent	69%, 60%, 57%
CMY	0.3059, 0.4000, 0.4274
CMYK	0.00, 0.14, 0.18, 0.31
HSL	14°, 17%, 63%
HSV	14°, 18%, 69%
XYZ	34.7110, 34.2049, 31.9669
YIQ	159.3780, 16.5510, 2.9110

Conversions

Conversions Part 2

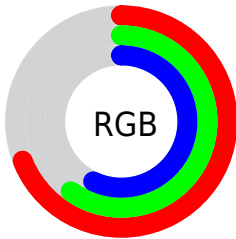
Format	Color
RYB	177, 155, 146
Decimal	11639186
CIELab	65.12, 7.72, 6.94
CIELCh	65, 10.382, 41.984
Yxy	34.2049, 0.3441, 0.3391
Android (android.graphics.Color)	4289829266 (0xFFB19992)
YUV	159.3780, -6.5954, 15.4545
Hunter-Lab	58.4850, 3.5916, 8.5325

Details

The XYZ color **34.7110, 34.2049, 31.9669** is a light color, and the websafe version is hex **999999**. A complement of this color would be **34.1644, 38.0339, 47.1359**, and the grayscale version is **33.1524, 34.8789, 37.9832**.

A 20% lighter version of the original color is **66.3424, 66.1194, 63.9093**, and **15.1749, 14.6324, 13.0909** is the 20% darker color. If you saturate the color by 10%, you get **31.3243, 29.4667, 24.5629**, and if you desaturate by 10%, it is **38.5703, 39.5465, 40.5810**.

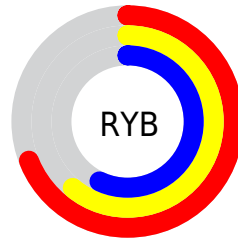
Distribution



Red (69%)

Green (60%)

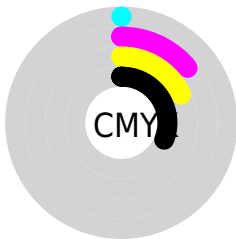
Blue (57%)



Red (69%)

Yellow (61%)

Blue (57%)

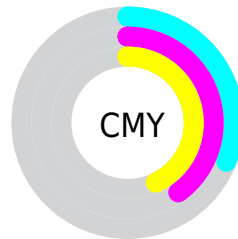


Cyan (0%)

Magenta (14%)

Yellow (18%)

Black (31%)



Cyan (31%)

Magenta (40%)

Yellow (43%)

Brightness & Saturation Gradients

These gradients show how the XYZ color 34.7110, 34.2049, 31.9669 changes by changing the brightness by 10 percent. The first figure shows a shift by +10% for each color and the second figure -10%.

Similar to the brightness gradients but the following saturation gradients show a change of the XYZ color 34.7110, 34.2049, 31.9669 by changing the saturation by 10% instead.

■ 34.7110, 34.2049,
31.9669

■ 34.7110, 34.2049,
31.9669

314.8213,
321.0447, 325.4565

■ 23.6058, 23.0511,
21.0716

■ 66.3748, 66.2522,
63.8565

■ 15.1646, 14.6312,
12.9846

■ 87.6641, 87.9144,
85.6879

■ 9.0221, 8.5610,
7.2873

113.0788,
113.8482, 112.0017

■ 4.8128, 4.4559,
3.5613

142.9844,
144.4380, 143.2165

■ 2.1715, 1.9317,
1.3879

177.7460,
180.0681, 179.7509

■ 0.7276, 0.5674,
0.1322

217.7291,

■ 0.0000, 0.0000,

221.1230, 222.0233

0.0000

263.2991,
267.9871, 270.4523

■ 34.7110, 34.2049,
31.9669

■ 34.7110, 34.2049,
31.9669

■ 31.3243, 29.4667,
24.5629

■ 38.5703, 39.5465,
40.5810

■ 28.3889, 25.3061,
18.3123

■ 42.9169, 45.5070,
50.4541

■ 25.8862, 21.7021,
13.1575

■ 47.7681, 52.1073,
61.6346

■ 23.7948, 18.6306,
9.0347

■ 53.1397, 59.3657,
74.1683

■ 22.0917, 16.0658,
5.8734

■ 59.0467, 67.2998,
88.0983

■ 20.7515, 13.9796,
3.5944

■ 65.5035, 75.9267,
103.4659

■ 19.7452, 12.3411,
2.1056

■ 70.0307, 84.2654,
107.1816

■ 19.0339, 11.1133,
1.2683

■ 71.9416, 88.0872,
107.8185

■ 18.8899, 10.8639,
1.1013

Harmonies

Analogous

The Analogous color harmony consists of three colors that are next to each other on the color wheel.



35.4263, 34.2049, 35.5478



34.7110, 34.2049, 31.9669



33.4146, 34.2049, 29.9006

Triad

The Triadic color harmony groups three colors that are evenly spaced from another and form a triangle on the color wheel.



34.7110, 34.2049, 31.9669



29.8341, 34.2049, 34.7369



33.1157, 34.2049, 45.9587

Complementary

The Complementary color scheme is a pair of colors which are on the opposite of each other on the color wheel.



34.7110, 34.2049, 31.9669



34.1644, 38.0339, 47.1359

Split Complementary

Split-complementary colors differ from the complementary color scheme. The scheme consists of three colors, the original color and two neighbors of the complement color.



31.6234, 34.2049, 45.6993



34.7110, 34.2049, 31.9669



29.7597, 34.2049, 38.9919

Square

The Square scheme is like the rectangle color scheme, but the four colors are evenly spaced on the color wheel.



34.7110, 34.2049, 31.9669



30.6120, 34.2049, 31.4128



30.4055, 34.2049, 43.0706



34.4864, 34.2049, 43.7540

Rectangle

The Rectangle color scheme consists of four colors that form a rectangle on the color wheel.



34.7110, 34.2049, 31.9669



32.4106, 34.2049, 29.5550



30.4055, 34.2049, 43.0706



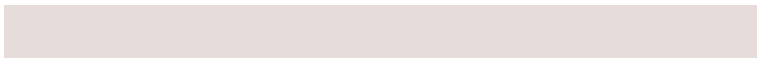
32.6111, 34.2049, 46.1612

Sweetspot

The Sweet Spot groups the original color and five complimentary colors.



34.7119, 34.2064, 31.9676



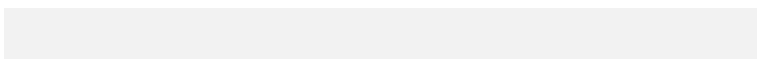
70.8866, 73.3147, 76.7619



35.6933, 32.8184, 42.6246



15.2506, 15.7349, 16.3831



84.5950, 89.0005, 96.9216



16.2198, 17.0645, 18.5832

Same Dimension

The Same Dimension uses a secret algorithm to generate beautiful new colors.



34.7119, 34.2064, 31.9676



59.7367, 57.8732, 51.9025



37.3628, 39.5081, 32.8512



8.6470, 8.8064, 8.8966



13.7252, 7.9489, 0.8109



0.4759, 0.3381, 0.0402

Inverse Universe

The Inverse Universe completely reimagines the original color for something new.



34.1644, 38.0339, 47.1359



58.5709, 66.0066, 84.1488



31.4756, 32.6564, 46.2396



8.5766, 9.2994, 10.8493



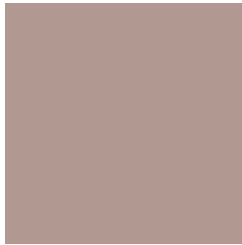
12.2796, 15.3595, 32.4545



0.4265, 0.5635, 1.0345

Previews

White Background



This preview shows how the XYZ color 34.7110, 34.2049, 31.9669 looks on a white background.

Color Contrast Check

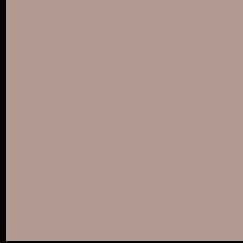
Large Text (above 18pt) WCAG AA × Fail

Any Text WCAG AA × Fail

Large Text (above 18pt) WCAG AAA × Fail

Any Text WCAG AAA × Fail

Black Background



This preview shows how the XYZ color 34.7110, 34.2049, 31.9669 looks on a black background.

Color Contrast Check

Large Text (above 18pt) WCAG AA ✓ Pass

Any Text WCAG AA ✓ Pass

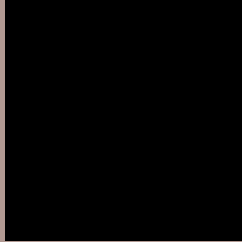
Large Text (above 18pt) WCAG AAA ✓ Pass

Any Text WCAG AAA ✓ Pass

If you want to check with other color combinations, try the [Color Contrast Checker](#).

XYZ 34.7110, 34.2049, 31.9669

Background



This preview shows how black text looks on a background with the XYZ color 34.7110, 34.2049, 31.9669.



This preview shows how white text looks on a background with the XYZ color 34.7110, 34.2049,

31.9669.

Color Blindness Simulation

Color vision deficiency is a very complex topic, and I could not describe the different causes any better than Wikipedia does, so if you want to learn more, you should check out their [article about color blindness](#).

Dichromacy



Original Color

34.7110, 34.2049, 31.9669

Protanopia

32.6764, 34.3784, 32.9304

Deuteranopia

34.9396, 34.3228, 31.9776



Tritanopia

36.1786, 34.3256, 38.9011

Trichromacy



Original Color

34.7110, 34.2049, 31.9669

Protanomaly

33.3034, 34.2083, 32.4514

Deuteranomaly

34.9396, 34.3228, 31.9776

Tritanomaly

35.5891, 34.3218, 36.2015

Monochromacy



Original Color

34.7110, 34.2049, 31.9669

Achromatopsia

32.9542, 34.6704, 37.7561

Achromatomaly

33.6156, 34.5540, 35.4697

CSS Examples

Text

The CSS property to change the color of the text to XYZ 34.7110, 34.2049, 31.9669 is called "color". The color property can be set on classes, ids or directly on the HTML element.

This example shows how text in the color `rgb(177, 153, 146)` looks like.

```
.text, #text, p{  
    color:rgb(177, 153, 146)  
}
```

If you want to add a text shadow in that color use the text-shadow property, you can generate a text shadow directly with our [CSS Text Shadow Generator](#).

Here you see how black text with a 4 pixel rgb(177, 153, 146) colored shadow looks like.

```
.shadow{ text-shadow: 4px 4px 2px rgb(177, 153, 146) }
```

Border

The CSS property to change the border of an element to XYZ 34.7110, 34.2049, 31.9669 is called "border". The border property can be set on classes, ids or directly on the HTML element.

This example shows the color as border, it can be applied via the CSS property "border" or "border-color".

```
.border, #border, table{ border:4px solid rgb(177, 153, 146) }
```


If only the border color should be changed use the property `border-color`.

```
.border{ border-color:rgb(177, 153, 146) }
```

If you want to add a box shadow in that color use:

Here you see how a box with a 4 pixel `rgb(177, 153, 146)` colored shadow looks like.

```
.boxshadow{ -moz-box-shadow:4px 4px 4px  
4px rgb(177, 153, 146); -webkit-box-  
shadow:4px 4px 4px 4px rgb(177, 153, 146);  
box-shadow:4px 4px 4px 4px rgb(177, 153,  
146) }
```

Background

The CSS property to change the background color of an element to XYZ 34.7110, 34.2049, 31.9669 is called "background". The background property can be set on classes, ids or directly on the HTML element.

```
.background, #background, body{  
background: rgb(177, 153, 146) }
```

If only the background color should be changed can be used:

```
.background{ background-color: rgb(177,  
153, 146) }
```

This example shows the color as background, it is applied via the CSS property "background".

To optimize and compress your CSS code, you can use our [online CSS compressor and optimizer](#) based on csstidy. If you want to create a linear or radial gradient as background or border, check our [CSS Gradient Generator](#).

Hey! You found this booklet interesting? Support Converting Colors with the new Membership Option!

The pro membership hides all ads, plus gives you double the colors in the color bucket, and more awesome pro features!

[Learn more, Memberships starting at \\$2.50/m!](#)

**Follow me
on Twitter!**

@ConvertingColor