

Converting Colors

XYZ(34.7496, 33.6142, 19.9272)

Have a look what the booklet for
XYZ(34.7496, 33.6142, 19.9272)
contains.

XYZ(34.6583, 33.4836, 19.9655)	3
<i>Conversions</i>	4
<i>Details</i>	6
<i>Harmonies</i>	12
<i>Previews</i>	24
<i>Color Blindness Simulation</i>	28
<i>CSS Examples</i>	31

Color

**XYZ(34.6583, 33.4836,
19.9655)**

Conversions

Conversions Part 1

Format	Color
Hex	BD9570
RGB	189, 149, 112
RGB Percent	74%, 58%, 44%
CMY	0.2588, 0.4157, 0.5608
CMYK	0.00, 0.21, 0.41, 0.26
HSL	29°, 37%, 59%
HSV	29°, 41%, 74%
XYZ	34.6583, 33.4836, 19.9655
YIQ	156.7420, 35.7170, -3.0270

Conversions

Conversions Part 2

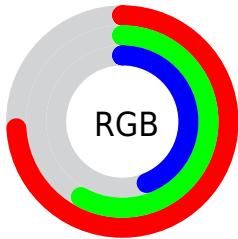
Format	Color
RYB	189, 183, 112
Decimal	12424560
CIELab	64.55, 10.01, 25.26
CIELCh	65, 27.168, 68.377
Yxy	33.4836, 0.3934, 0.3800
Android (android.graphics.Color)	4290614640 (0xFFBD9570)
YUV	156.7420, -22.0578, 28.2903
Hunter-Lab	57.8650, 5.6489, 20.0483

Details

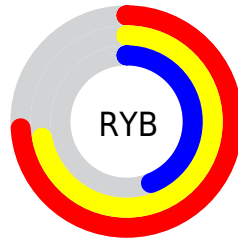
The XYZ color **34.6583, 33.4836, 19.9655** is a light color, and the websafe version is hex **CC9966**. A complement of this color would be **27.0951, 29.5740, 52.4242**, and the grayscale version is **32.0173, 33.6847, 36.6827**.

A 20% lighter version of the original color is **66.4145, 65.1664, 44.1999**, and **15.1246, 14.1739, 6.7892** is the 20% darker color. If you saturate the color by 10%, you get **32.2263, 30.1307, 14.4968**, and if you desaturate by 10%, it is **37.4438, 37.1900, 26.6425**.

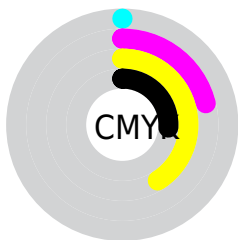
Distribution



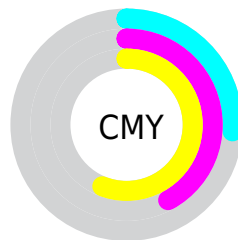
- Red (74%)
- Green (58%)
- Blue (44%)



- Red (74%)
- Yellow (72%)
- Blue (44%)



- Cyan (0%)
- Magenta (21%)
- Yellow (41%)
- Black (26%)





- Cyan (26%)
- Magenta (42%)
- Yellow (56%)

Brightness & Saturation Gradients


These gradients show how the XYZ color 34.6583, 33.4836, 19.9655 changes by changing the brightness by 10 percent. The first figure shows a shift by +10% for each color and the second figure -10%.


Similar to the brightness gradients but the following saturation gradients show a change of the XYZ color 34.6583, 33.4836, 19.9655 by changing the saturation by 10% instead.


 34.6583, 33.4836,
19.9655


 34.6583, 33.4836,
19.9655


314.5920,
317.8233, 264.3263


 23.5651, 22.4972,
12.1861

 66.2936, 65.1298,
44.2175

 15.1343, 14.2227,
6.7465


 87.5664, 86.5584,
61.5273

 9.0006, 8.2757,
3.2280


 112.9630,
112.2365, 82.8510

 4.7987, 4.2719,
1.2122

 142.8489,
142.5485, 108.6070

 2.1632, 1.8268,
0.0000

177.5894,
177.8787, 139.2141

 0.7232, 0.5038,
0.0000

217.5498,

 0.0000, 0.0000,

218.6117, 175.0906

0.0000

263.0956,
265.1317, 216.6552

■ 34.6583, 33.4836,
19.9655

■ 34.6583, 33.4836,
19.9655

■ 32.2263, 30.1307,
14.4968

■ 37.4438, 37.1900,
26.6425

■ 30.1282, 27.1144,
10.1599

■ 40.5961, 41.2563,
34.5939

■ 28.3460, 24.4235,
6.8726

■ 44.1309, 45.6948,
43.8832

■ 26.8584, 22.0438,
4.5407

■ 48.0620, 50.5157,
54.5692

■ 25.6408, 19.9599,
3.0523

■ 52.4025, 55.7288,
66.7071

■ 24.7127, 18.2718,
2.2243

■ 57.1648, 61.3435,
80.3489

■ 62.3610, 67.3686,
95.5445

■ 66.6535, 73.2735,
105.2379

■ 69.4242, 78.8148,
106.1615

Harmonies

Analogous

The Analogous color harmony consists of three colors that are next to each other on the color wheel.



38.0485, 33.4836, 24.7225



34.6583, 33.4836, 19.9655



30.7491, 33.4836, 19.1226

Triad

The Triadic color harmony groups three colors that are evenly spaced from another and form a triangle on the color wheel.



34.6583, 33.4836, 19.9655



24.9914, 33.4836, 39.6647



36.6923, 33.4836, 55.9350

Complementary

The Complementary color scheme is a pair of colors which are on the opposite of each other on the color wheel.



34.6583, 33.4836, 19.9655



27.0951, 29.5740, 52.4242

Split Complementary

Split-complementary colors differ from the complementary color scheme. The scheme consists of three colors, the original color and two neighbors of the complement color.



32.9260, 33.4836, 61.9867



34.6583, 33.4836, 19.9655



26.3203, 33.4836, 51.4199

Square

The Square scheme is like the rectangle color scheme, but the four colors are evenly spaced on the color wheel.



34.6583, 33.4836, 19.9655



25.3730, 33.4836, 29.1283



29.1508, 33.4836, 60.1848



39.2878, 33.4836, 44.9243

Rectangle

The Rectangle color scheme consists of four colors that form a rectangle on the color wheel.



34.6583, 33.4836, 19.9655



28.4049, 33.4836, 20.6871



29.1508, 33.4836, 60.1848



35.5095, 33.4836, 58.7090

Sweetspot

The Sweet Spot groups the original color and five complimentary colors.



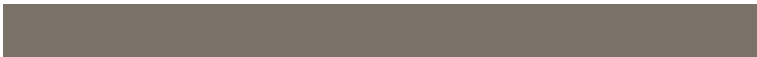
34.6591, 33.4852, 19.9662



78.0761, 80.6434, 76.0267



32.5358, 24.7095, 33.2206



16.6072, 17.1142, 15.8639



90.7827, 95.5105, 104.0109



18.6292, 19.5994, 21.3438

Same Dimension

The Same Dimension uses a secret algorithm to generate beautiful new colors.



34.6591, 33.4852, 19.9662



58.1078, 54.5122, 26.8104



41.5611, 47.2892, 22.2668



9.8983, 10.2725, 10.0377



16.7033, 12.4453, 1.5218



0.7198, 0.6185, 0.0815

Inverse Universe

The Inverse Universe completely reimagines the original color for something new.



27.0951, 29.5740, 52.4242



42.6891, 46.5347, 92.9583



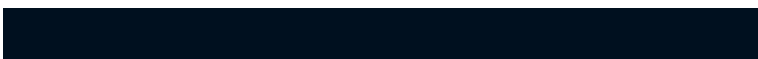
21.9491, 19.2821, 50.7089



9.4154, 10.0230, 12.1106



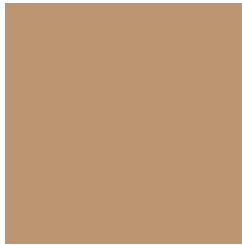
9.2065, 8.5248, 33.5531



0.4258, 0.4643, 1.3360

Previews

White Background



This preview shows how the XYZ color 34.6583, 33.4836, 19.9655 looks on a white background.

Color Contrast Check

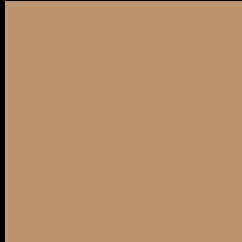
Large Text (above 18pt) WCAG AA × Fail

Any Text WCAG AA × Fail

Large Text (above 18pt) WCAG AAA × Fail

Any Text WCAG AAA × Fail

Black Background



This preview shows how the XYZ color 34.6583, 33.4836, 19.9655 looks on a black background.

Color Contrast Check

Large Text (above 18pt) WCAG AA ✓ Pass

Any Text WCAG AA ✓ Pass

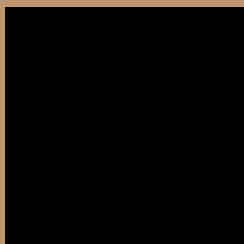
Large Text (above 18pt) WCAG AAA ✓ Pass

Any Text WCAG AAA ✓ Pass

If you want to check with other color combinations, try the [Color Contrast Checker](#).

XYZ 34.6583, 33.4836, 19.9655

Background



This preview shows how black text looks on a background with the XYZ color 34.6583, 33.4836, 19.9655.



This preview shows how white text looks on a background with the XYZ color 34.6583, 33.4836,

Color Blindness Simulation

Color vision deficiency is a very complex topic, and I could not describe the different causes any better than Wikipedia does, so if you want to learn more, you should check out their [article about color blindness](#).

Dichromacy



Original Color

34.6583, 33.4836, 19.9655

Protanopia

31.2999, 33.6766, 21.0702

Deuteranopia

34.0807, 33.4216, 19.9840



Tritanopia

37.6475, 33.3155, 35.0181

Trichromacy



Original Color

34.6583, 33.4836, 19.9655

Protanomaly

32.4974, 33.5562, 20.6838

Deuteranomaly

34.3245, 33.5473, 19.9954

Tritanomaly

36.5238, 33.3213, 28.9327

Monochromacy



Original Color

34.6583, 33.4836, 19.9655

Achromatopsia

32.0474, 33.7164, 36.7171

Achromatomaly

32.7255, 33.4693, 29.9347

CSS Examples

Text

The CSS property to change the color of the text to XYZ 34.6583, 33.4836, 19.9655 is called "color". The color property can be set on classes, ids or directly on the HTML element.

This example shows how text in the color `rgb(189, 149, 112)` looks like.

```
.text, #text, p{  
    color:rgb(189, 149, 112)  
}
```

If you want to add a text shadow in that color use the text-shadow property, you can generate a text shadow directly with our [CSS Text Shadow Generator](#).

Here you see how black text with a 4 pixel rgb(189, 149, 112) colored shadow looks like.

```
.shadow{ text-shadow: 4px 4px 2px rgb(189, 149, 112) }
```

Border

The CSS property to change the border of an element to XYZ 34.6583, 33.4836, 19.9655 is called "border". The border property can be set on classes, ids or directly on the HTML element.

This example shows the color as border, it can be applied via the CSS property "border" or "border-color".

```
.border, #border, table{ border:4px solid rgb(189, 149, 112) }
```


If only the border color should be changed use the property `border-color`.

```
.border{ border-color:rgb(189, 149, 112) }
```

If you want to add a box shadow in that color use:

Here you see how a box with a 4 pixel `rgb(189, 149, 112)` colored shadow looks like.

```
.boxshadow{ -moz-box-shadow:4px 4px 4px  
4px rgb(189, 149, 112); -webkit-box-  
shadow:4px 4px 4px 4px rgb(189, 149, 112);  
box-shadow:4px 4px 4px 4px rgb(189, 149,  
112) }
```

Background

The CSS property to change the background color of an element to XYZ 34.6583, 33.4836, 19.9655 is called "background". The background property can be set on classes, ids or directly on the HTML element.

```
.background, #background, body{  
background: rgb(189, 149, 112) }
```

If only the background color should be changed can be used:

```
.background{ background-color: rgb(189,  
149, 112) }
```

This example shows the color as background, it is applied via the CSS property "background".

To optimize and compress your CSS code, you can use our [online CSS compressor and optimizer](#) based on csstidy. If you want to create a linear or radial gradient as background or border, check our [CSS Gradient Generator](#).

Hey! You found this booklet interesting? Support Converting Colors with the new Membership Option!

The pro membership hides all ads, plus gives you double the colors in the color bucket, and more awesome pro features!

[Learn more, Memberships starting at \\$2.50/m!](#)

**Follow me
on Twitter!**

@ConvertingColor