

# Converting Colors

XYZ(34.7766, 33.9968, 31.9232)

Have a look what the booklet for  
XYZ(34.7766, 33.9968, 31.9232)  
contains.

<b>XYZ(34.7766, 33.9968, 31.9232)</b> .....	3
<b><i>Conversions</i></b> .....	4
<b><i>Details</i></b> .....	6
<b><i>Harmonies</i></b> .....	12
<b><i>Previews</i></b> .....	24
<b><i>Color Blindness Simulation</i></b> .....	28
<b><i>CSS Examples</i></b> .....	31

# Color

**XYZ(34.7766, 33.9968,  
31.9232)**

# Conversions

## Conversions Part 1

Format	Color
Hex	B29892
RGB	178, 152, 146
RGB Percent	70%, 60%, 57%
CMY	0.3020, 0.4039, 0.4274
CMYK	0.00, 0.15, 0.18, 0.30
HSL	11°, 17%, 64%
HSV	11°, 18%, 70%
XYZ	34.7766, 33.9968, 31.9232
YIQ	159.0900, 17.4220, 3.6460

# Conversions

## Conversions Part 2

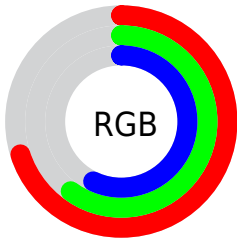
<b>Format</b>	<b>Color</b>
<b>RYB</b>	178, 153, 146
Decimal	11704466
CIELab	64.96, 8.65, 6.72
CIELCh	65, 10.956, 37.838
Yxy	33.9968, 0.3454, 0.3376
Android (android.graphics.Color)	4289894546 (0xFFB29892)
YUV	159.0900, -6.4534, 16.5841
Hunter-Lab	58.3068, 4.4280, 8.3532

# Details

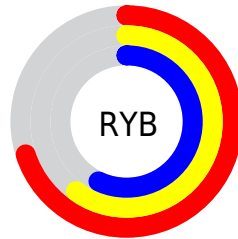
The XYZ color **34.7766, 33.9968, 31.9232** is a light color, and the websafe version is hex **CC9999**. A complement of this color would be **34.6420, 38.8292, 47.7886**, and the grayscale version is **33.0196, 34.7392, 37.8310**.

A 20% lighter version of the original color is **66.4283, 65.8052, 63.8441**, and **15.2224, 14.5119, 13.0651** is the 20% darker color. If you saturate the color by 10%, you get **31.2929, 29.0752, 24.4543**, and if you desaturate by 10%, it is **38.7640, 39.5800, 40.6245**.

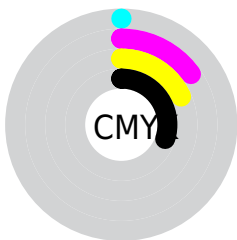
# Distribution



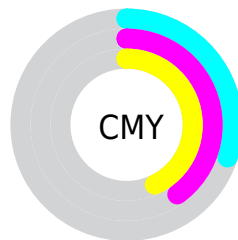
- Red (70%)
- Green (60%)
- Blue (57%)



- Red (70%)
- Yellow (60%)
- Blue (57%)



- Cyan (0%)
- Magenta (15%)
- Yellow (18%)
- Black (30%)




- Cyan (30%)
- Magenta (40%)
- Yellow (43%)


# Brightness & Saturation Gradients

These gradients show how the XYZ color 34.7766, 33.9968, 31.9232 changes by changing the brightness by 10 percent. The first figure shows a shift by +10% for each color and the second figure -10%.


Similar to the brightness gradients but the following saturation gradients show a change of the XYZ color 34.7766, 33.9968, 31.9232 by changing the saturation by 10% instead.




 34.7766, 33.9968,  
31.9232


 34.7766, 33.9968,  
31.9232


315.1065,  
320.1178, 325.2512

 23.6565, 22.8911,  
21.0385


 66.4758, 65.9287,  
63.7872

 15.2024, 14.5131,  
12.9606


 87.7857, 87.5237,  
85.6036

 9.0488, 8.4784,  
7.2710


113.2230,  
113.3840, 111.9009

 4.8304, 4.4026,  
3.5512

143.1529,  
143.8939, 143.0978

 2.1818, 1.9012,  
1.3825

177.9408,  
179.4378, 179.6127

 0.7331, 0.5491,  
0.1280

217.9522,

 0.0000, 0.0000,

220.4002, 221.8642

0.0000

263.5523,  
267.1654, 270.2709

■ 34.7766, 33.9968,  
31.9232

■ 34.7766, 33.9968,  
31.9232

■ 31.2929, 29.0752,  
24.4543

■ 38.7640, 39.5800,  
40.6245

■ 28.2899, 24.7862,  
18.1598

■ 43.2712, 45.8434,  
50.6082

■ 25.7468, 21.1053,  
12.9802

■ 48.3173, 52.8106,  
61.9242

■ 23.6405, 18.0047,  
8.8502

■ 53.9194, 60.5026,  
74.6192

■ 21.9456, 15.4543,  
5.6973

■ 60.0939, 68.9397,  
88.7375

■ 20.6339, 13.4213,  
3.4400

■ 66.8565, 78.1410,  
104.3216

■ 19.6736, 11.8692,  
1.9832

■ 71.6074, 87.0795,  
107.6417

■ 19.0205, 10.7542,  
1.1767

■ 72.1702, 88.2050,  
107.8292

■ 18.9151, 10.5748,  
1.0442

# Harmonies

## Analogous

The Analogous color harmony consists of three colors that are next to each other on the color wheel.



35.4227, 33.9968, 35.8407



34.7766, 33.9968, 31.9232



33.4747, 33.9968, 29.5170

# Triad

The Triadic color harmony groups three colors that are evenly spaced from another and form a triangle on the color wheel.



34.7766, 33.9968, 31.9232



29.5755, 33.9968, 33.8251



32.7298, 33.9968, 46.3404

# Complementary

The Complementary color scheme is a pair of colors which are on the opposite of each other on the color wheel.



34.7766, 33.9968, 31.9232



34.6420, 38.8292, 47.7886

# Split Complementary

Split-complementary colors differ from the complementary color scheme. The scheme consists of three colors, the original color and two neighbors of the complement color.



31.1784, 33.9968, 45.6901



34.7766, 33.9968, 31.9232



29.3907, 33.9968, 38.2182

# Square

The Square scheme is like the rectangle color scheme, but the four colors are evenly spaced on the color wheel.



34.7766, 33.9968, 31.9232



30.4817, 33.9968, 30.5510



29.9685, 33.9968, 42.6252



34.2161, 33.9968, 44.3359



# Rectangle

The Rectangle color scheme consists of four colors that form a rectangle on the color wheel.



34.7766, 33.9968, 31.9232



32.4279, 33.9968, 28.9720



29.9685, 33.9968, 42.6252



32.1983, 33.9968, 46.4278

# Sweetspot

The Sweet Spot groups the original color and five complimentary colors.



34.7775, 33.9983, 31.9239



72.5600, 74.9300, 78.6599



36.0984, 33.0068, 43.5655



15.9535, 16.4306, 17.1573



86.6293, 91.1408, 99.2523



17.0014, 17.8868, 19.4787



# Same Dimension

The Same Dimension uses a secret algorithm to generate beautiful new colors.



34.7775, 33.9983, 31.9239



60.1740, 57.5777, 51.6576



37.5267, 39.4966, 32.8403



8.6211, 8.7547, 8.8880



13.5690, 7.6367, 0.7589



0.4653, 0.3169, 0.0367



# Inverse Universe

The Inverse Universe completely reimagines the original color for something new.



34.6420, 38.8292, 47.7886



59.8752, 68.1463, 86.3790



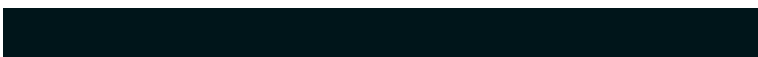
31.8011, 33.1474, 46.8416



8.6044, 9.3551, 10.8585



12.9944, 16.7892, 32.6928

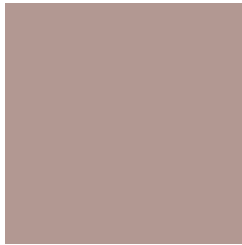


0.4439, 0.5983, 1.0403



# Previews

## White Background



This preview shows how the XYZ color 34.7766, 33.9968, 31.9232 looks on a white background.

## Color Contrast Check

Large Text (above 18pt) WCAG AA × Fail

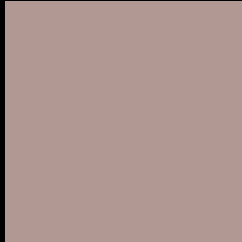
Any Text WCAG AA × Fail

Large Text (above 18pt) WCAG AAA × Fail

Any Text WCAG AAA × Fail



# Black Background



This preview shows how the XYZ color 34.7766, 33.9968, 31.9232 looks on a black background.

## Color Contrast Check

Large Text (above 18pt) WCAG AA ✓ Pass

Any Text WCAG AA ✓ Pass

Large Text (above 18pt) WCAG AAA ✓ Pass

Any Text WCAG AAA ✓ Pass

If you want to check with other color combinations, try the [Color Contrast Checker](#).

**XYZ 34.7766, 33.9968, 31.9232**

## **Background**



This preview shows how black text looks on a background with the XYZ color 34.7766, 33.9968, 31.9232.



This preview shows how white text looks on a background with the XYZ color 34.7766, 33.9968,



# Color Blindness Simulation

Color vision deficiency is a very complex topic, and I could not describe the different causes any better than Wikipedia does, so if you want to learn more, you should check out their [article about color blindness](#).

## Dichromacy



### Original Color

34.7766, 33.9968, 31.9232

### Protanopia

32.5860, 34.0704, 33.2925

### Deuteranopia

34.5480, 33.8789, 31.9125



## Tritanopia

36.1618, 34.0892, 38.3922

# Trichromacy



## Original Color

34.7766, 33.9968, 31.9232

## Protanomaly

33.2151, 33.9056, 32.8108

## Deuteranomaly

34.5480, 33.8789, 31.9125

## Tritanomaly

35.6578, 34.1172, 36.1584

# Monochromacy



## Original Color

34.7766, 33.9968, 31.9232

## Achromatopsia

32.9542, 34.6704, 37.7561

## Achromatomaly

33.4471, 34.2170, 35.4135

# CSS Examples

## Text

The CSS property to change the color of the text to XYZ 34.7766, 33.9968, 31.9232 is called "color". The color property can be set on classes, ids or directly on the HTML element.

This example shows how text in the color `rgb(178, 152, 146)` looks like.

```
.text, #text, p{  
    color:rgb(178, 152, 146)  
}
```

If you want to add a text shadow in that color use the text-shadow property, you can generate a text shadow directly with our [CSS Text Shadow Generator](#).

Here you see how black text with a 4 pixel rgb(178, 152, 146) colored shadow looks like.

```
.shadow{ text-shadow: 4px 4px 2px rgb(178, 152, 146) }
```

## Border

The CSS property to change the border of an element to XYZ 34.7766, 33.9968, 31.9232 is called "border". The border property can be set on classes, ids or directly on the HTML element.

This example shows the color as border, it can be applied via the CSS property "border" or "border-color".

```
.border, #border, table{ border:4px solid rgb(178, 152, 146) }
```



If only the border color should be changed use the property `border-color`.

```
.border{ border-color:rgb(178, 152, 146) }
```

If you want to add a box shadow in that color use:

Here you see how a box with a 4 pixel `rgb(178, 152, 146)` colored shadow looks like.

```
.boxshadow{ -moz-box-shadow:4px 4px 4px  
4px rgb(178, 152, 146); -webkit-box-  
shadow:4px 4px 4px 4px rgb(178, 152, 146);  
box-shadow:4px 4px 4px 4px rgb(178, 152,  
146) }
```

# Background

The CSS property to change the background color of an element to XYZ 34.7766, 33.9968, 31.9232 is called "background". The background property can be set on classes, ids or directly on the HTML element.

```
.background, #background, body{  
background: rgb(178, 152, 146) }
```

If only the background color should be changed can be used:

```
.background{ background-color: rgb(178,  
152, 146) }
```

This example shows the color as background, it is applied via the CSS property "background".

To optimize and compress your CSS code, you can use our [online CSS compressor and optimizer](#) based on csstidy. If you want to create a linear or radial gradient as background or border, check our [CSS Gradient Generator](#).

Hey! You found this booklet interesting? Support Converting Colors with the new Membership Option!

The pro membership hides all ads, plus gives you double the colors in the color bucket, and more awesome pro features!

**[Learn more, Memberships starting at \\$2.50/m!](#)**

**Follow me  
on Twitter!**

@ConvertingColor