

Converting Colors

XYZ(34.7853, 33.3070, 37.1058)

Have a look what the booklet for
XYZ(34.7853, 33.3070, 37.1058)
contains.

XYZ(34.7571, 33.3953, 36.9618)	3
<i>Conversions</i>	4
<i>Details</i>	6
<i>Harmonies</i>	12
<i>Previews</i>	24
<i>Color Blindness Simulation</i>	28
<i>CSS Examples</i>	31

Color

**XYZ(34.7571, 33.3953,
36.9618)**

Conversions

Conversions Part 1

Format	Color
Hex	AF969E
RGB	175, 150, 158
RGB Percent	69%, 59%, 62%
CMY	0.3137, 0.4117, 0.3804
CMYK	0.00, 0.14, 0.10, 0.31
HSL	341°, 14%, 64%
HSV	341°, 14%, 69%
XYZ	34.7571, 33.3953, 36.9618
YIQ	158.3870, 12.3320, 7.7880

Conversions

Conversions Part 2

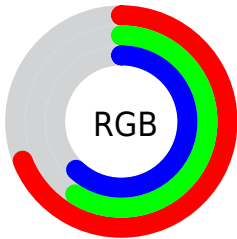
Format	Color
RYB	175, 150, 158
Decimal	11507358
CIELab	64.48, 10.66, -0.76
CIELCh	64, 10.683, 355.926
Yxy	33.3953, 0.3307, 0.3177
Android (android.graphics.Color)	4289697438 (0xFFAF969E)
YUV	158.3870, -0.1908, 14.5696
Hunter-Lab	57.7887, 6.2290, 2.5300

Details

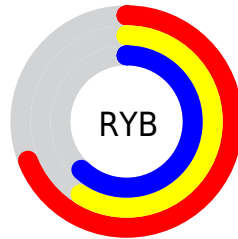
The XYZ color **34.7571, 33.3953, 36.9618** is a light color, and the websafe version is hex **999999**. A complement of this color would be **34.8840, 39.9348, 42.4308**, and the grayscale version is **32.6728, 34.3744, 37.4337**.

A 20% lighter version of the original color is **66.5581, 64.9788, 71.9850**, and **15.1417, 14.1228, 15.8378** is the 20% darker color. If you saturate the color by 10%, you get **31.1952, 27.8321, 30.9627**, and if you desaturate by 10%, it is **38.8372, 39.8353, 43.6240**.

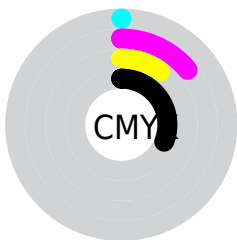
Distribution



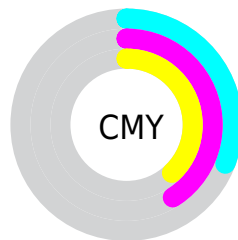
- Red (69%)
- Green (59%)
- Blue (62%)



- Red (69%)
- Yellow (59%)
- Blue (62%)



- Cyan (0%)
- Magenta (14%)
- Yellow (10%)
- Black (31%)



- Cyan (31%)
- Magenta (41%)
- Yellow (38%)

Brightness & Saturation Gradients

These gradients show how the XYZ color 34.7571, 33.3953, 36.9618 changes by changing the brightness by 10 percent. The first figure shows a shift by +10% for each color and the second figure -10%.

Similar to the brightness gradients but the following saturation gradients show a change of the XYZ color 34.7571, 33.3953, 36.9618 by changing the saturation by 10% instead.

■ 34.7571, 33.3953,
36.9618

■ 34.7571, 33.3953,
36.9618

315.0217,
317.4272, 348.3088

■ 23.6415, 22.4294,
24.8824

■ 66.4458, 64.9922,
71.6997

■ 15.1912, 14.1728,
15.7712

■ 87.7496, 86.3920,
95.1952

■ 9.0408, 8.2409,
9.2098

113.1801,
112.0386, 123.3332

■ 4.8252, 4.2495,
4.7796

143.1028,
142.3164, 156.5322

■ 2.1787, 1.8141,
2.0621

177.8829,
177.6098, 195.2107

■ 0.7315, 0.4959,
0.5931

217.8859,

■ 0.0000, 0.0000,

218.3031, 239.7873

0.0000

263.4770,
264.7808, 290.6805

■ 34.7571, 33.3953,
36.9618

■ 34.7571, 33.3953,
36.9618

■ 31.1952, 27.8321,
30.9627

■ 38.8372, 39.8353,
43.6240

■ 28.1275, 23.1032,
25.6036

■ 43.4525, 47.1831,
50.9670

■ 25.5320, 19.1694,
20.8632

■ 48.6230, 55.4741,
59.0107

■ 23.3843, 15.9864,
16.7180

■ 54.3667, 64.7400,
67.7733

■ 21.6575, 13.5056,
13.1432

■ 60.7006, 75.0114,
77.2725

■ 20.3216, 11.6726,
10.1116

■ 67.6396, 86.3141,
87.5247

■ 19.3424, 10.4250,
7.5939

■ 69.3632, 87.0036,
96.6010

■ 18.6793, 9.6877,
5.5572

■ 71.2030, 87.7395,
106.2894

■ 18.3928, 9.3994,
4.5844

■ 71.4894, 87.8540,
107.7974

Harmonies

Analogous

The Analogous color harmony consists of three colors that are next to each other on the color wheel.



34.2327, 33.3953, 41.2731



34.7571, 33.3953, 36.9618



34.4523, 33.3953, 32.8122

Triad

The Triadic color harmony groups three colors that are evenly spaced from another and form a triangle on the color wheel.



34.7571, 33.3953, 36.9618



30.4763, 33.3953, 29.3195



30.1264, 33.3953, 43.7714

Complementary

The Complementary color scheme is a pair of colors which are on the opposite of each other on the color wheel.



34.7571, 33.3953, 36.9618



34.8840, 39.9348, 42.4308

Split Complementary

Split-complementary colors differ from the complementary color scheme. The scheme consists of three colors, the original color and two neighbors of the complement color.



29.1762, 33.3953, 40.1586



34.7571, 33.3953, 36.9618



29.3736, 33.3953, 31.8564

Square

The Square scheme is like the rectangle color scheme, but the four colors are evenly spaced on the color wheel.



34.7571, 33.3953, 36.9618



31.9500, 33.3953, 28.6114



28.9051, 33.3953, 35.7683



31.5333, 33.3953, 45.3989

Rectangle

The Rectangle color scheme consists of four colors that form a rectangle on the color wheel.



34.7571, 33.3953, 36.9618



33.8251, 33.3953, 30.6556



28.9051, 33.3953, 35.7683



29.7448, 33.3953, 42.7355

Sweetspot

The Sweet Spot groups the original color and five complimentary colors.



34.7580, 33.3968, 36.9625



69.7223, 71.6077, 78.3973



34.5114, 33.0887, 45.1256



15.3682, 15.7122, 17.2179



84.5950, 89.0005, 96.9216



16.2198, 17.0645, 18.5832

Same Dimension

The Same Dimension uses a secret algorithm to generate beautiful new colors.



34.7580, 33.3968, 36.9625



60.2335, 56.6503, 62.8404



34.7685, 34.4837, 33.6795



8.1069, 8.0560, 8.8737



13.1969, 6.7413, 3.4162



0.3924, 0.1977, 0.2283

Inverse Universe

The Inverse Universe completely reimagines the original color for something new.



34.7580, 33.3968, 36.9625



60.2335, 56.6503, 62.8404



34.8481, 38.6430, 46.1800



8.1069, 8.0560, 8.8737



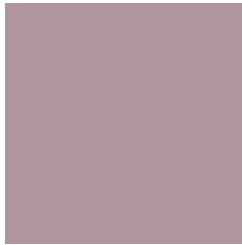
13.1969, 6.7413, 3.4162



0.3924, 0.1977, 0.2283

Previews

White Background



This preview shows how the XYZ color 34.7571, 33.3953, 36.9618 looks on a white background.

Color Contrast Check

Large Text (above 18pt) WCAG AA × Fail

Any Text WCAG AA × Fail

Large Text (above 18pt) WCAG AAA × Fail

Any Text WCAG AAA × Fail

Black Background



This preview shows how the XYZ color 34.7571, 33.3953, 36.9618 looks on a black background.

Color Contrast Check

Large Text (above 18pt) WCAG AA ✓ Pass

Any Text WCAG AA ✓ Pass

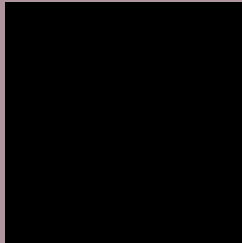
Large Text (above 18pt) WCAG AAA ✓ Pass

Any Text WCAG AAA ✓ Pass

If you want to check with other color combinations, try the [Color Contrast Checker](#).

XYZ 34.7571, 33.3953, 36.9618

Background



This preview shows how black text looks on a background with the XYZ color 34.7571, 33.3953, 36.9618.



This preview shows how white text looks on a background with the XYZ color 34.7571, 33.3953,

36.9618.

Color Blindness Simulation

Color vision deficiency is a very complex topic, and I could not describe the different causes any better than Wikipedia does, so if you want to learn more, you should check out their [article about color blindness](#).

Dichromacy



Original Color

34.7571, 33.3953, 36.9618

Protanopia

32.4220, 33.6192, 38.4986

Deuteranopia

34.1944, 33.5830, 37.0277



Tritanopia

34.8597, 33.1821, 38.2857

Trichromacy



Original Color

34.7571, 33.3953, 36.9618

Protanomaly

33.2106, 33.5418, 37.9815

Deuteranomaly

34.2514, 33.3725, 36.9840

Tritanomaly

34.7718, 33.1469, 37.8230

Monochromacy



Original Color

34.7571, 33.3953, 36.9618

Achromatopsia

32.4990, 34.1914, 37.2345

Achromatomaly

33.2027, 33.8038, 37.1226

CSS Examples

Text

The CSS property to change the color of the text to XYZ 34.7571, 33.3953, 36.9618 is called "color". The color property can be set on classes, ids or directly on the HTML element.

This example shows how text in the color `rgb(175, 150, 158)` looks like.

```
.text, #text, p{  
    color:rgb(175, 150, 158)  
}
```

If you want to add a text shadow in that color use the text-shadow property, you can generate a text shadow directly with our [CSS Text Shadow Generator](#).

Here you see how black text with a 4 pixel rgb(175, 150, 158) colored shadow looks like.

```
.shadow{ text-shadow: 4px 4px 2px rgb(175, 150, 158) }
```

Border

The CSS property to change the border of an element to XYZ 34.7571, 33.3953, 36.9618 is called "border". The border property can be set on classes, ids or directly on the HTML element.

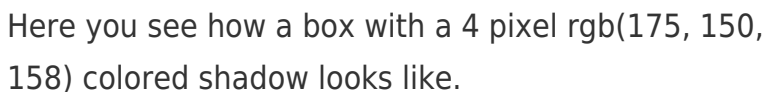
This example shows the color as border, it can be applied via the CSS property "border" or "border-color".

```
.border, #border, table{ border:4px solid rgb(175, 150, 158) }
```


If only the border color should be changed use the property `border-color`.

```
.border{ border-color:rgb(175, 150, 158) }
```

If you want to add a box shadow in that color use:



Here you see how a box with a 4 pixel `rgb(175, 150, 158)` colored shadow looks like.

```
.boxshadow{ -moz-box-shadow:4px 4px 4px 4px rgb(175, 150, 158); -webkit-box-shadow:4px 4px 4px 4px rgb(175, 150, 158); box-shadow:4px 4px 4px 4px rgb(175, 150, 158) }
```

Background

The CSS property to change the background color of an element to XYZ 34.7571, 33.3953, 36.9618 is called "background". The background property can be set on classes, ids or directly on the HTML element.

```
.background, #background, body{  
background: rgb(175, 150, 158) }
```

If only the background color should be changed can be used:

```
.background{ background-color: rgb(175,  
150, 158) }
```

This example shows the color as background, it is applied via the CSS property "background".

To optimize and compress your CSS code, you can use our [online CSS compressor and optimizer](#) based on csstidy. If you want to create a linear or radial gradient as background or border, check our [CSS Gradient Generator](#).

Hey! You found this booklet interesting? Support Converting Colors with the new Membership Option!

The pro membership hides all ads, plus gives you double the colors in the color bucket, and more awesome pro features!

[Learn more, Memberships starting at \\$2.50/m!](#)

**Follow me
on Twitter!**

@ConvertingColor