

Converting Colors

XYZ(34.7880, 31.9424, 30.3186)

Have a look what the booklet for
XYZ(34.7880, 31.9424, 30.3186)
contains.

XYZ(34.7880, 31.9424, 30.3186)	3
<i>Conversions</i>	4
<i>Details</i>	6
<i>Harmonies</i>	12
<i>Previews</i>	24
<i>Color Blindness Simulation</i>	28
<i>CSS Examples</i>	31

Color

**XYZ(34.7880, 31.9424,
30.3186)**

Conversions

Conversions Part 1

Format	Color
Hex	B98F8F
RGB	185, 143, 143
RGB Percent	73%, 56%, 56%
CMY	0.2745, 0.4392, 0.4392
CMYK	0.00, 0.23, 0.23, 0.27
HSL	0°, 23%, 64%
HSV	0°, 23%, 73%
XYZ	34.7880, 31.9424, 30.3186
YIQ	155.5580, 25.0320, 8.9040

Conversions

Conversions Part 2

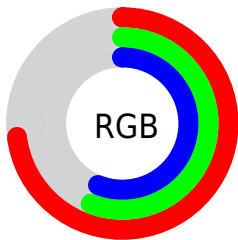
Format	Color
R_{YB}	185, 143, 143
Decimal	12160911
CIE Lab	63.30, 15.87, 6.11
CIE LCh	63, 17.005, 21.076
Yxy	31.9424, 0.3585, 0.3291
Android (android.graphics.Color)	4290350991 (0xFFB98F8F)
YUV	155.5580, -6.1911, 25.8206
Hunter-Lab	56.5176, 10.9654, 7.7565

Details

The XYZ color **34.7880, 31.9424, 30.3186** is a light color, and the websafe version is hex **CC9999**. A complement of this color would be **37.4332, 44.0392, 52.4267**, and the grayscale version is **31.4227, 33.0592, 36.0014**.

A 20% lighter version of the original color is **66.6622, 62.8410, 61.4394**, and **15.1630, 13.2699, 12.1181** is the 20% darker color. If you saturate the color by 10%, you get **30.9488, 26.3248, 22.6854**, and if you desaturate by 10%, it is **39.3180, 38.5712, 39.3231**.

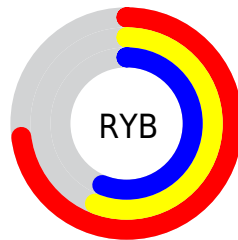
Distribution



Red (73%)

Green (56%)

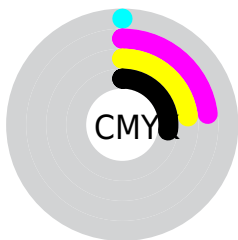
Blue (56%)



Red (73%)

Yellow (56%)

Blue (56%)

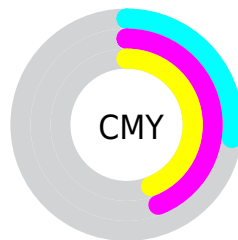


Cyan (0%)

Magenta (23%)

Yellow (23%)

Black (27%)



Cyan (27%)


Magenta (44%)


Yellow (44%)

Brightness & Saturation Gradients


These gradients show how the XYZ color 34.7880, 31.9424, 30.3186 changes by changing the brightness by 10 percent. The first figure shows a shift by +10% for each color and the second figure -10%.


Similar to the brightness gradients but the following saturation gradients show a change of the XYZ color 34.7880, 31.9424, 30.3186 by changing the saturation by 10% instead.


 34.7880, 31.9424,
30.3186


 34.7880, 31.9424,
30.3186


315.1560,
310.8568, 317.6401


 23.6654, 21.3175,
19.8264


 66.4934, 62.7208,
61.2326

 15.2090, 13.3563,
12.0861


 87.8069, 83.6431,
82.4915

 9.0534, 7.6743,
6.6791


 113.2480,
108.7666, 108.1765

 4.8334, 3.8873,
3.1868

143.1822,
138.4758, 138.7060

 2.1836, 1.6107,
1.1908

177.9747,
173.1550, 174.4985

 0.7341, 0.3648,
0.0000

217.9909,

 0.0000, 0.0000,

213.1886, 215.9727

0.0000

263.5963,
258.9611, 263.5471

■ 34.7880, 31.9424,
30.3186

■ 34.7880, 31.9424,
30.3186

■ 30.9488, 26.3248,
22.6854

■ 39.3180, 38.5712,
39.3231

■ 27.7641, 21.6646,
16.3543

■ 44.5676, 46.2529,
49.7594

■ 25.1981, 17.9098,
11.2534

■ 50.5673, 55.0319,
61.6868

■ 23.2107, 15.0016,
7.3026

■ 57.3448, 64.9492,
75.1606

■ 21.7569, 12.8742,
4.4128

■ 64.9265, 76.0433,
90.2334

■ 20.7853, 11.4524,
2.4816

■ 73.3377, 88.3510,
106.9553

■ 20.2342, 10.6459,
1.3863

■ 73.8177, 89.0543,
107.9063

■ 20.0079, 10.3147,
0.9364

Harmonies

Analogous

The Analogous color harmony consists of three colors that are next to each other on the color wheel.



35.0606, 31.9424, 36.8322



34.7880, 31.9424, 30.3186



33.2973, 31.9424, 25.6288

Triad

The Triadic color harmony groups three colors that are evenly spaced from another and form a triangle on the color wheel.



34.7880, 31.9424, 30.3186



26.9696, 31.9424, 27.2466



29.6627, 31.9424, 49.2405

Complementary

The Complementary color scheme is a pair of colors which are on the opposite of each other on the color wheel.



34.7880, 31.9424, 30.3186



37.4332, 44.0392, 52.4267

Split Complementary

Split-complementary colors differ from the complementary color scheme. The scheme consists of three colors, the original color and two neighbors of the complement color.



27.6013, 31.9424, 45.8848



34.7880, 31.9424, 30.3186



26.1001, 31.9424, 32.8052

Square

The Square scheme is like the rectangle color scheme, but the four colors are evenly spaced on the color wheel.



34.7880, 31.9424, 30.3186



28.7597, 31.9424, 24.0212



26.3252, 31.9424, 39.6586



32.0192, 31.9424, 48.3494

Rectangle

The Rectangle color scheme consists of four colors that form a rectangle on the color wheel.



34.7880, 31.9424, 30.3186



31.8538, 31.9424, 23.8912



26.3252, 31.9424, 39.6586



28.9142, 31.9424, 48.5573

Sweetspot

The Sweet Spot groups the original color and five complimentary colors.



34.7889, 31.9439, 30.3193



75.5090, 76.5302, 80.5483



38.5873, 33.4624, 50.3243



16.1580, 16.3225, 17.1257



88.6918, 93.3107, 101.6153



17.8044, 18.7317, 20.3988

Same Dimension

The Same Dimension uses a secret algorithm to generate beautiful new colors.



34.7889, 31.9439, 30.3193



58.8967, 52.2219, 47.5233



38.2413, 38.8488, 31.4701



9.0047, 9.0123, 9.3719



13.6235, 7.0234, 0.6376



0.4803, 0.2476, 0.0225

Inverse Universe

The Inverse Universe completely reimagines the original color for something new.



37.4332, 44.0392, 52.4267



64.4288, 77.5257, 93.7728



33.3605, 35.8938, 51.0691



9.2666, 10.2105, 11.5619



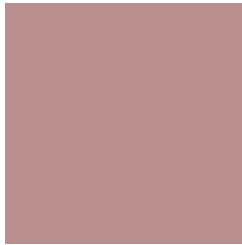
17.7736, 26.0069, 35.3361



0.6266, 0.9168, 1.2457

Previews

White Background



This preview shows how the XYZ color 34.7880, 31.9424, 30.3186 looks on a white background.

Color Contrast Check

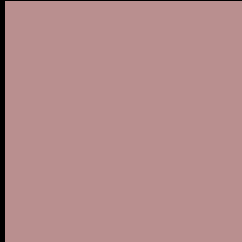
Large Text (above 18pt) WCAG AA × Fail

Any Text WCAG AA × Fail

Large Text (above 18pt) WCAG AAA × Fail

Any Text WCAG AAA × Fail

Black Background



This preview shows how the XYZ color 34.7880, 31.9424, 30.3186 looks on a black background.

Color Contrast Check

Large Text (above 18pt) WCAG AA ✓ Pass

Any Text WCAG AA ✓ Pass

Large Text (above 18pt) WCAG AAA ✓ Pass

Any Text WCAG AAA ✓ Pass

If you want to check with other color combinations, try the [Color Contrast Checker](#).

XYZ 34.7880, 31.9424, 30.3186

Background



This preview shows how black text looks on a background with the XYZ color 34.7880, 31.9424, 30.3186.



This preview shows how white text looks on a background with the XYZ color 34.7880, 31.9424,

Color Blindness Simulation

Color vision deficiency is a very complex topic, and I could not describe the different causes any better than Wikipedia does, so if you want to learn more, you should check out their [article about color blindness](#).

Dichromacy



Original Color

34.7880, 31.9424, 30.3186

Protanopia

30.6412, 32.0887, 32.5957

Deuteranopia

32.7060, 32.0170, 30.0473



Tritanopia

35.5902, 32.0521, 34.0166

Trichromacy



Original Color

34.7880, 31.9424, 30.3186

Protanomaly

31.8721, 31.7857, 31.6495

Deuteranomaly

33.2928, 31.8579, 29.9856

Tritanomaly

35.3475, 31.9550, 32.7387

Monochromacy



Original Color

34.7880, 31.9424, 30.3186

Achromatopsia

31.5995, 33.2452, 36.2040

Achromatomaly

32.5889, 32.5831, 33.8497

CSS Examples

Text

The CSS property to change the color of the text to XYZ 34.7880, 31.9424, 30.3186 is called "color". The color property can be set on classes, ids or directly on the HTML element.

This example shows how text in the color `rgb(185, 143, 143)` looks like.

```
.text, #text, p{  
    color:rgb(185, 143, 143)  
}
```

If you want to add a text shadow in that color use the text-shadow property, you can generate a text shadow directly with our [CSS Text Shadow Generator](#).

Here you see how black text with a 4 pixel rgb(185, 143, 143) colored shadow looks like.

```
.shadow{ text-shadow: 4px 4px 2px rgb(185, 143, 143) }
```

Border

The CSS property to change the border of an element to XYZ 34.7880, 31.9424, 30.3186 is called "border". The border property can be set on classes, ids or directly on the HTML element.

This example shows the color as border, it can be applied via the CSS property "border" or "border-color".

```
.border, #border, table{ border:4px solid rgb(185, 143, 143) }
```


If only the border color should be changed use the property `border-color`.

```
.border{ border-color:rgb(185, 143, 143) }
```

If you want to add a box shadow in that color use:

Here you see how a box with a 4 pixel `rgb(185, 143, 143)` colored shadow looks like.

```
.boxshadow{ -moz-box-shadow:4px 4px 4px 4px rgb(185, 143, 143); -webkit-box-shadow:4px 4px 4px 4px rgb(185, 143, 143); box-shadow:4px 4px 4px 4px rgb(185, 143, 143) }
```

Background

The CSS property to change the background color of an element to XYZ 34.7880, 31.9424, 30.3186 is called "background". The background property can be set on classes, ids or directly on the HTML element.

```
.background, #background, body{  
background: rgb(185, 143, 143) }
```

If only the background color should be changed can be used:

```
.background{ background-color: rgb(185,  
143, 143) }
```

This example shows the color as background, it is applied via the CSS property "background".

To optimize and compress your CSS code, you can use our [online CSS compressor and optimizer](#) based on csstidy. If you want to create a linear or radial gradient as background or border, check our [CSS Gradient Generator](#).

Hey! You found this booklet interesting? Support Converting Colors with the new Membership Option!

The pro membership hides all ads, plus gives you double the colors in the color bucket, and more awesome pro features!

[Learn more, Memberships starting at \\$2.50/m!](#)

**Follow me
on Twitter!**

@ConvertingColor