

Converting Colors

XYZ(34.8559, 33.8074, 32.0953)

Have a look what the booklet for
XYZ(34.8559, 33.8074, 32.0953)
contains.

XYZ(34.9235, 33.8235, 32.2917)	3
<i>Conversions</i>	4
<i>Details</i>	6
<i>Harmonies</i>	12
<i>Previews</i>	24
<i>Color Blindness Simulation</i>	28
<i>CSS Examples</i>	31

Color

**XYZ(34.9235, 33.8235,
32.2917)**

Conversions

Conversions Part 1

Format	Color
Hex	B39793
RGB	179, 151, 147
RGB Percent	70%, 59%, 58%
CMY	0.2980, 0.4078, 0.4235
CMYK	0.00, 0.16, 0.18, 0.30
HSL	8°, 17%, 64%
HSV	8°, 18%, 70%
XYZ	34.9235, 33.8235, 32.2917
YIQ	158.9160, 17.9720, 4.6920

Conversions

Conversions Part 2

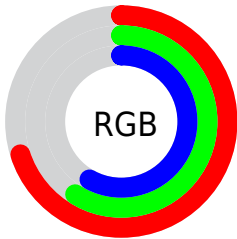
Format	Color
RYB	179, 152, 147
Decimal	11769747
CIELab	64.82, 9.75, 5.97
CIELCh	65, 11.434, 31.498
Yxy	33.8235, 0.3456, 0.3348
Android (android.graphics.Color)	4289959827 (0xFFB39793)
YUV	158.9160, -5.8746, 17.6137
Hunter-Lab	58.1580, 5.4117, 7.7903

Details

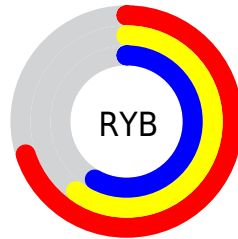
The XYZ color **34.9235, 33.8235, 32.2917** is a light color, and the websafe version is hex **CC9999**. A complement of this color would be **35.4991, 40.1168, 48.5205**, and the grayscale version is **32.9373, 34.6526, 37.7366**.

A 20% lighter version of the original color is **66.6349, 65.5419, 64.3971**, and **15.2727, 14.3945, 13.0398** is the 20% darker color. If you saturate the color by 10%, you get **31.2717, 28.5954, 24.6754**, and if you desaturate by 10%, it is **39.1305, 39.8117, 41.1722**.

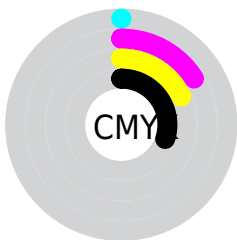
Distribution



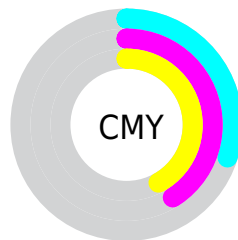
- Red (70%)
- Green (59%)
- Blue (58%)



- Red (70%)
- Yellow (60%)
- Blue (58%)



- Cyan (0%)
- Magenta (16%)
- Yellow (18%)
- Black (30%)



- Cyan (30%)
- Magenta (41%)
- Yellow (42%)

Brightness & Saturation Gradients

These gradients show how the XYZ color 34.9235, 33.8235, 32.2917 changes by changing the brightness by 10 percent. The first figure shows a shift by +10% for each color and the second figure -10%.

Similar to the brightness gradients but the following saturation gradients show a change of the XYZ color 34.9235, 33.8235, 32.2917 by changing the saturation by 10% instead.

■ 34.9235, 33.8235,
32.2917

■ 34.9235, 33.8235,
32.2917

315.7445,
319.3443, 326.9795

■ 23.7702, 22.7580,
21.3177

■ 66.7020, 65.6591,
64.3713

■ 15.2870, 14.4149,
13.1630

■ 88.0580, 87.1980,
86.3140

■ 9.1087, 8.4098,
7.4088

113.5455,
112.9969, 112.7501

■ 4.8698, 4.3583,
3.6368

143.5300,
143.4401, 144.0981

■ 2.2051, 1.8759,
1.4283

178.3768,
178.9121, 180.7764

■ 0.7454, 0.5339,
0.1636

218.4512,

■ 0.0000, 0.0000,

219.7972, 223.2038

0.0000

264.1187,
266.4798, 271.7986

■ 34.9235, 33.8235,
32.2917

■ 34.9235, 33.8235,
32.2917

■ 31.2717, 28.5954,
24.6754

■ 39.1305, 39.8117,
41.1722

■ 28.1493, 24.0927,
18.2638

■ 43.9119, 46.5839,
51.3686

■ 25.5322, 20.2845,
12.9956

■ 49.2891, 54.1688,
62.9322

■ 23.3938, 17.1362,
8.8034

■ 55.2817, 62.5921,
75.9109

■ 21.7046, 14.6101,
5.6128

■ 61.9085, 71.8784,
90.3504

■ 20.4319, 12.6645,
3.3397

■ 69.1873, 82.0513,
106.2944

■ 19.5386, 11.2528,
1.8862

■ 72.4006, 88.3238,
107.8400

■ 18.9746, 10.3185,
1.1007

■ 18.8850, 10.1728,
0.9682

Harmonies

Analogous

The Analogous color harmony consists of three colors that are next to each other on the color wheel.



35.4175, 33.8235, 36.5915



34.9235, 33.8235, 32.2917



33.6825, 33.8235, 29.4219

Triad

The Triadic color harmony groups three colors that are evenly spaced from another and form a triangle on the color wheel.



34.9235, 33.8235, 32.2917



29.4459, 33.8235, 32.6692



32.2310, 33.8235, 46.6542

Complementary

The Complementary color scheme is a pair of colors which are on the opposite of each other on the color wheel.



34.9235, 33.8235, 32.2917



35.4991, 40.1168, 48.5205

Split Complementary

Split-complementary colors differ from the complementary color scheme. The scheme consists of three colors, the original color and two neighbors of the complement color.



30.6612, 33.8235, 45.3832



34.9235, 33.8235, 32.2917



29.0865, 33.8235, 37.0656

Square

The Square scheme is like the rectangle color scheme, but the four colors are evenly spaced on the color wheel.



34.9235, 33.8235, 32.2917



30.5226, 33.8235, 29.6264



29.5240, 33.8235, 41.7705



33.8306, 33.8235, 45.1113

Rectangle

The Rectangle color scheme consists of four colors that form a rectangle on the color wheel.



34.9235, 33.8235, 32.2917



32.6185, 33.8235, 28.5700



29.5240, 33.8235, 41.7705



31.6825, 33.8235, 46.5413

Sweetspot

The Sweet Spot groups the original color and five complimentary colors.



34.9244, 33.8250, 32.2924



72.3670, 74.5441, 78.5956



36.7886, 33.5573, 45.2335



15.9053, 16.3342, 17.1413



86.6293, 91.1408, 99.2523



17.0014, 17.8868, 19.4787

Same Dimension

The Same Dimension uses a secret algorithm to generate beautiful new colors.



34.9244, 33.8250, 32.2924



60.1626, 57.1707, 52.8384



37.6272, 39.2306, 33.1933



8.5792, 8.6709, 8.8740



13.3721, 7.2428, 0.6932



0.4480, 0.2823, 0.0309

Inverse Universe

The Inverse Universe completely reimagines the original color for something new.



35.4991, 40.1168, 48.5205



61.3609, 70.3031, 86.7170



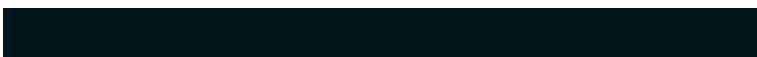
32.6138, 34.3463, 47.5588



8.6502, 9.4465, 10.8738



14.2555, 19.3113, 33.1131



0.4738, 0.6581, 1.0503

Previews

White Background



This preview shows how the XYZ color 34.9235, 33.8235, 32.2917 looks on a white background.

Color Contrast Check

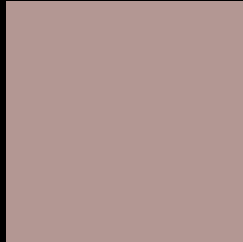
Large Text (above 18pt) WCAG AA × Fail

Any Text WCAG AA × Fail

Large Text (above 18pt) WCAG AAA × Fail

Any Text WCAG AAA × Fail

Black Background



This preview shows how the XYZ color 34.9235, 33.8235, 32.2917 looks on a black background.

Color Contrast Check

Large Text (above 18pt) WCAG AA ✓ Pass

Any Text WCAG AA ✓ Pass

Large Text (above 18pt) WCAG AAA ✓ Pass

Any Text WCAG AAA ✓ Pass

If you want to check with other color combinations, try the [Color Contrast Checker](#).

XYZ 34.9235, 33.8235, 32.2917

Background



This preview shows how black text looks on a background with the XYZ color 34.9235, 33.8235, 32.2917.



This preview shows how white text looks on a background with the XYZ color 34.9235, 33.8235,

Color Blindness Simulation

Color vision deficiency is a very complex topic, and I could not describe the different causes any better than Wikipedia does, so if you want to learn more, you should check out their [article about color blindness](#).

Dichromacy



Original Color

34.9235, 33.8235, 32.2917

Protanopia

32.4623, 33.9973, 33.7054

Deuteranopia

34.6262, 33.9102, 32.3241



Tritanopia

36.2365, 33.8919, 38.3501

Trichromacy



Original Color

34.9235, 33.8235, 32.2917

Protanomaly

33.2946, 33.9374, 33.2295

Deuteranomaly

34.8548, 34.0280, 32.3348

Tritanomaly

35.7295, 33.9163, 36.1158

Monochromacy



Original Color

34.9235, 33.8235, 32.2917

Achromatopsia

32.9542, 34.6704, 37.7561

Achromatomaly

33.5307, 34.2505, 35.8541

CSS Examples

Text

The CSS property to change the color of the text to XYZ 34.9235, 33.8235, 32.2917 is called "color". The color property can be set on classes, ids or directly on the HTML element.

This example shows how text in the color `rgb(179, 151, 147)` looks like.

```
.text, #text, p{  
    color:rgb(179, 151, 147)  
}
```

If you want to add a text shadow in that color use the text-shadow property, you can generate a text shadow directly with our [CSS Text Shadow Generator](#).

Here you see how black text with a 4 pixel rgb(179, 151, 147) colored shadow looks like.

```
.shadow{ text-shadow: 4px 4px 2px rgb(179, 151, 147) }
```

Border

The CSS property to change the border of an element to XYZ 34.9235, 33.8235, 32.2917 is called "border". The border property can be set on classes, ids or directly on the HTML element.

This example shows the color as border, it can be applied via the CSS property "border" or "border-color".

```
.border, #border, table{ border:4px solid rgb(179, 151, 147) }
```


If only the border color should be changed use the property `border-color`.

```
.border{ border-color:rgb(179, 151, 147) }
```

If you want to add a box shadow in that color use:

Here you see how a box with a 4 pixel `rgb(179, 151, 147)` colored shadow looks like.

```
.boxshadow{ -moz-box-shadow:4px 4px 4px  
4px rgb(179, 151, 147); -webkit-box-  
shadow:4px 4px 4px 4px rgb(179, 151, 147);  
box-shadow:4px 4px 4px 4px rgb(179, 151,  
147) }
```

Background

The CSS property to change the background color of an element to XYZ 34.9235, 33.8235, 32.2917 is called "background". The background property can be set on classes, ids or directly on the HTML element.

```
.background, #background, body{  
background: rgb(179, 151, 147) }
```

If only the background color should be changed can be used:

```
.background{ background-color: rgb(179,  
151, 147) }
```

This example shows the color as background, it is applied via the CSS property "background".

To optimize and compress your CSS code, you can use our [online CSS compressor and optimizer](#) based on csstidy. If you want to create a linear or radial gradient as background or border, check our [CSS Gradient Generator](#).

Hey! You found this booklet interesting? Support Converting Colors with the new Membership Option!

The pro membership hides all ads, plus gives you double the colors in the color bucket, and more awesome pro features!

[Learn more, Memberships starting at \\$2.50/m!](#)

**Follow me
on Twitter!**

@ConvertingColor