

Converting Colors

XYZ(34.8579, 30.9102, 27.3184)

Have a look what the booklet for
XYZ(34.8579, 30.9102, 27.3184)
contains.

XYZ(35.0183, 31.0309, 27.4365)	3
<i>Conversions</i>	4
<i>Details</i>	6
<i>Harmonies</i>	12
<i>Previews</i>	24
<i>Color Blindness Simulation</i>	28
<i>CSS Examples</i>	31

Color

**XYZ(35.0183, 31.0309,
27.4365)**

Conversions

Conversions Part 1

Format	Color
Hex	BF8A88
RGB	191, 138, 136
RGB Percent	75%, 54%, 53%
CMY	0.2510, 0.4588, 0.4667
CMYK	0.00, 0.28, 0.29, 0.25
HSL	2°, 30%, 64%
HSV	2°, 29%, 75%
XYZ	35.0183, 31.0309, 27.4365
YIQ	153.6190, 32.2300, 10.6140

Conversions

Conversions Part 2

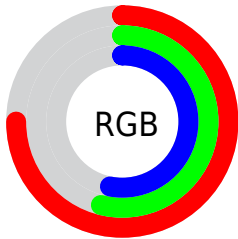
Format	Color
RYB	191, 138, 136
Decimal	12552840
CIELab	62.53, 19.94, 9.08
CIELCh	63, 21.907, 24.483
Yxy	31.0309, 0.3746, 0.3319
Android (android.graphics.Color)	4290742920 (0xFFBF8A88)
YUV	153.6190, -8.6862, 32.7831
Hunter-Lab	55.7054, 14.7267, 9.7917

Details

The XYZ color **35.0183, 31.0309, 27.4365** is a light color, and the websafe version is hex **CC9999**. A complement of this color would be **37.7544, 45.3897, 56.0616**, and the grayscale version is **30.5759, 32.1682, 35.0312**.

A 20% lighter version of the original color is **66.7463, 61.3299, 56.4640**, and **15.3228, 12.8856, 10.4837** is the 20% darker color. If you saturate the color by 10%, you get **31.3596, 25.6955, 20.1061**, and if you desaturate by 10%, it is **39.3681, 37.3608, 36.1914**.

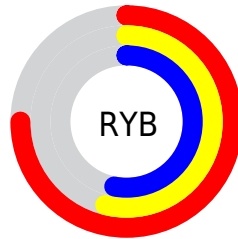
Distribution



Red (75%)

Green (54%)

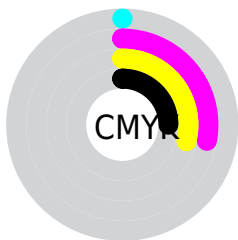
Blue (53%)



Red (75%)

Yellow (54%)

Blue (53%)

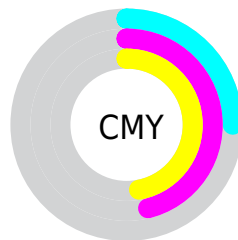


Cyan (0%)

Magenta (28%)

Yellow (29%)

Black (25%)



Cyan (25%)


Magenta (46%)


Yellow (47%)

Brightness & Saturation Gradients


These gradients show how the XYZ color 35.0183, 31.0309, 27.4365 changes by changing the brightness by 10 percent. The first figure shows a shift by +10% for each color and the second figure -10%.


Similar to the brightness gradients but the following saturation gradients show a change of the XYZ color 35.0183, 31.0309, 27.4365 by changing the saturation by 10% instead.


 35.0183, 31.0309,
27.4365


 35.0183, 31.0309,
27.4365


316.1557,
306.6806, 303.5912


 23.8436, 20.6224,
17.6660

 66.8480, 61.2887,
56.5957

 15.3417, 12.8483,
10.5435


 88.2336, 81.9068,
76.8216

 9.1474, 7.3241,
5.6505


 113.7535,
106.6969, 101.3696

 4.8954, 3.6656,
2.5684

143.7732,
136.0433, 130.6583

 2.2201, 1.4883,
0.8761

178.6578,
170.3305, 165.1063

 0.7533, 0.2805,
0.0000

218.7729,

 0.0000, 0.0000,

209.9429, 205.1320

0.0000

264.4838,
255.2648, 251.1542

■ 35.0183, 31.0309,
27.4365

■ 35.0183, 31.0309,
27.4365

■ 31.3596, 25.6955,
20.1061

■ 39.3681, 37.3608,
36.1914

■ 28.3539, 21.3000,
14.1230

■ 44.4392, 44.7276,
46.4384

■ 25.9637, 17.7913,
9.4058

■ 50.2633, 53.1763,
58.2434

■ 24.1464, 15.1092,
5.8636

■ 56.8693, 62.7482,
71.6674

■ 22.8539, 13.1858,
3.3930

■ 64.2847, 73.4823,
86.7684

■ 22.0304, 11.9428,
1.8732

■ 72.5355, 85.4159,
103.6016

■ 21.5981, 11.2806,
1.1051

■ 75.2959, 89.8164,
107.9755

■ 21.5615, 11.2275,
1.0307

Harmonies

Analogous

The Analogous color harmony consists of three colors that are next to each other on the color wheel.



35.5687, 31.0309, 35.3887



35.0183, 31.0309, 27.4365



32.9472, 31.0309, 22.1197

Triad

The Triadic color harmony groups three colors that are evenly spaced from another and form a triangle on the color wheel.



35.0183, 31.0309, 27.4365



25.0743, 31.0309, 25.1275



28.9468, 31.0309, 52.8810

Complementary

The Complementary color scheme is a pair of colors which are on the opposite of each other on the color wheel.



35.0183, 31.0309, 27.4365



37.7544, 45.3897, 56.0616

Split Complementary

Split-complementary colors differ from the complementary color scheme. The scheme consists of three colors, the original color and two neighbors of the complement color.



26.2908, 31.0309, 48.9708



35.0183, 31.0309, 27.4365



24.1535, 31.0309, 32.2351

Square

The Square scheme is like the rectangle color scheme, but the four colors are evenly spaced on the color wheel.



35.0183, 31.0309, 27.4365



27.1839, 31.0309, 20.9521



24.5835, 31.0309, 41.0497



31.9313, 31.0309, 51.0179

Rectangle

The Rectangle color scheme consists of four colors that form a rectangle on the color wheel.



35.0183, 31.0309, 27.4365



31.0525, 31.0309, 20.3209



24.5835, 31.0309, 41.0497



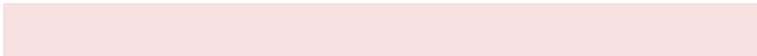
27.9884, 31.0309, 52.1807

Sweetspot

The Sweet Spot groups the original color and five complimentary colors.



35.0191, 31.0324, 27.4371



79.2530, 79.6170, 82.4880



39.4937, 32.3664, 52.4050



17.0925, 17.0321, 17.4850



92.9021, 97.7402, 106.4391



19.4759, 20.4902, 22.3138

Same Dimension

The Same Dimension uses a secret algorithm to generate beautiful new colors.



35.0191, 31.0324, 27.4371



58.1579, 48.9296, 39.9945



39.4454, 39.8850, 28.9126



9.5573, 9.5906, 9.9241



14.1827, 7.4043, 0.6817



0.5652, 0.3093, 0.0299

Inverse Universe

The Inverse Universe completely reimagines the original color for something new.



37.7544, 45.3897, 56.0616



63.9054, 79.1105, 100.1808



32.4194, 34.7196, 54.2833



9.7780, 10.7483, 12.2315



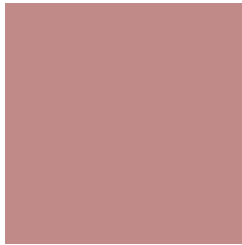
17.4637, 25.0392, 36.3055



0.6934, 0.9995, 1.4252

Previews

White Background



This preview shows how the XYZ color 35.0183, 31.0309, 27.4365 looks on a white background.

Color Contrast Check

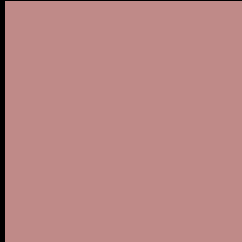
Large Text (above 18pt) WCAG AA × Fail

Any Text WCAG AA × Fail

Large Text (above 18pt) WCAG AAA × Fail

Any Text WCAG AAA × Fail

Black Background



This preview shows how the XYZ color 35.0183, 31.0309, 27.4365 looks on a black background.

Color Contrast Check

Large Text (above 18pt) WCAG AA ✓ Pass

Any Text WCAG AA ✓ Pass

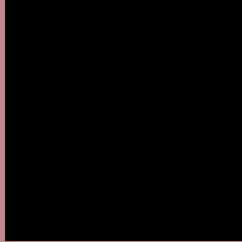
Large Text (above 18pt) WCAG AAA ✓ Pass

Any Text WCAG AAA ✓ Pass

If you want to check with other color combinations, try the [Color Contrast Checker](#).

XYZ 35.0183, 31.0309, 27.4365

Background



This preview shows how black text looks on a background with the XYZ color 35.0183, 31.0309, 27.4365.



This preview shows how white text looks on a background with the XYZ color 35.0183, 31.0309,

Color Blindness Simulation

Color vision deficiency is a very complex topic, and I could not describe the different causes any better than Wikipedia does, so if you want to learn more, you should check out their [article about color blindness](#).

Dichromacy



Original Color

35.0183, 31.0309, 27.4365

Protanopia

29.7348, 31.1843, 30.4386

Deuteranopia

31.6653, 31.0777, 27.2513



Tritanopia

35.8088, 30.9214, 31.6849

Trichromacy



Original Color

35.0183, 31.0309, 27.4365

Protanomaly

31.3747, 30.8862, 29.1190

Deuteranomaly

32.7860, 30.9779, 27.1730

Tritanomaly

35.6418, 31.0810, 30.1073

Monochromacy



Original Color

35.0183, 31.0309, 27.4365

Achromatopsia

30.7148, 32.3143, 35.1903

Achromatomaly

31.7927, 31.5019, 32.0086

CSS Examples

Text

The CSS property to change the color of the text to XYZ 35.0183, 31.0309, 27.4365 is called "color". The color property can be set on classes, ids or directly on the HTML element.

This example shows how text in the color `rgb(191, 138, 136)` looks like.

```
.text, #text, p{  
    color:rgb(191, 138, 136)  
}
```

If you want to add a text shadow in that color use the text-shadow property, you can generate a text shadow directly with our [CSS Text Shadow Generator](#).

Here you see how black text with a 4 pixel rgb(191, 138, 136) colored shadow looks like.

```
.shadow{ text-shadow: 4px 4px 2px rgb(191, 138, 136) }
```

Border

The CSS property to change the border of an element to XYZ 35.0183, 31.0309, 27.4365 is called "border". The border property can be set on classes, ids or directly on the HTML element.

This example shows the color as border, it can be applied via the CSS property "border" or "border-color".

```
.border, #border, table{ border:4px solid rgb(191, 138, 136) }
```


If only the border color should be changed use the property `border-color`.

```
.border{ border-color:rgb(191, 138, 136) }
```

If you want to add a box shadow in that color use:

Here you see how a box with a 4 pixel `rgb(191, 138, 136)` colored shadow looks like.

```
.boxshadow{ -moz-box-shadow:4px 4px 4px  
4px rgb(191, 138, 136); -webkit-box-  
shadow:4px 4px 4px 4px rgb(191, 138, 136);  
box-shadow:4px 4px 4px 4px rgb(191, 138,  
136) }
```

Background

The CSS property to change the background color of an element to XYZ 35.0183, 31.0309, 27.4365 is called "background". The background property can be set on classes, ids or directly on the HTML element.

```
.background, #background, body{  
background: rgb(191, 138, 136) }
```

If only the background color should be changed can be used:

```
.background{ background-color: rgb(191,  
138, 136) }
```

This example shows the color as background, it is applied via the CSS property "background".

To optimize and compress your CSS code, you can use our [online CSS compressor and optimizer](#) based on csstidy. If you want to create a linear or radial gradient as background or border, check our [CSS Gradient Generator](#).

Hey! You found this booklet interesting? Support Converting Colors with the new Membership Option!

The pro membership hides all ads, plus gives you double the colors in the color bucket, and more awesome pro features!

[Learn more, Memberships starting at \\$2.50/m!](#)

**Follow me
on Twitter!**

@ConvertingColor